



Adam Tas Corridor Energy

How to make shockproof supports for cable trays





How to make shockproof supports for cable trays



A Guide to Installing and Supporting Electrical Cable Trays

This guide covers the critical steps, from selecting the right electrical cable tray and performing accurate cable fill calculations to managing a safe cable pull through

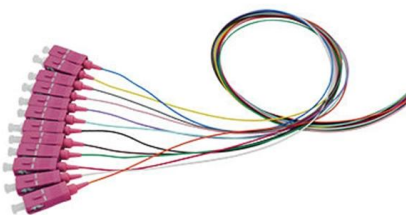
Decoding Cable Tray Support Structures: Tips and Insights

Discover efficient cable tray support structures for optimal cable management. Learn about hanger, wall-mounted, and Unistrut systems for safer



Rooftop Cable Tray Support System

PHP's cable tray support system is engineered to sustain various sizes of cable runs on your rooftop. PHP is the leader in cable tray support systems.



Cable Tray Support Unit , Titan Products , Roofco

Cable Tray Support Unit Titan Cable Tray support systems are all entirely freestanding, making



them a flexible, scalable solution that is easy to install



Cable Trays and Support Systems - Vashi Integrated

Ladder Cable Trays - Designed for heavy-duty power cables, offering high strength and support.
Unperforated Cable Trays - Best suited for dusty or corrosive



Cable Tray Support: Rod vs. Angle Steel

Learn about the different types of cable tray support, including rod supports and angle steel supports, and how to choose the right one for your



Seismic analysis and design of electrical cable trays and support

The design aspects of electrical cable trays and support systems are discussed from the seismic and structural standpoint. The effects of the inherent flexibility of commonly used cable trays





CABLE TRAY AND ELECTRICAL EQUIPMENT

Tools and equipment needed for cable tray support installation should be in good condition and must be checked by Supervisor / Safety Engineer prior to use in the



5 Steps to Learn How to Install Cable Trays

Installing a cable tray system requires careful planning to ensure it can support the weight of the cables and adheres to electrical safety codes.

Best Practice Guide to Cable Ladder and Cable Tray Systems

This guide covers cable ladder systems, cable tray systems, channel support systems and associated supports intended for the support and accommodation of cables and possibly other electrical



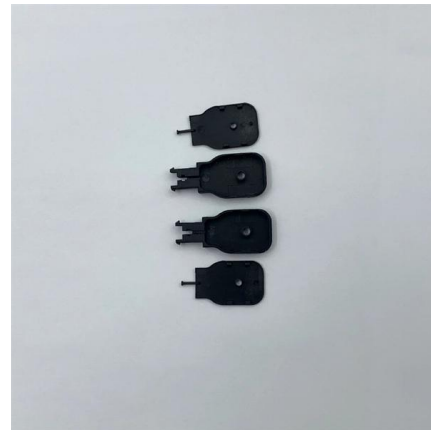
Guide to cable support systems

Support systems for cable support structures are used to bridge large loads and support spacings and to create complex section routes. The systems allow large support spacings of wide span systems



Cable Tray Technical Guide A practical guide to product selection and

SOLID-BOTTOM CABLE TRAY Providing additional cable protection, solid-bottom cable tray is sometimes preferred to support and protect numerous small instrumentation and control cables.

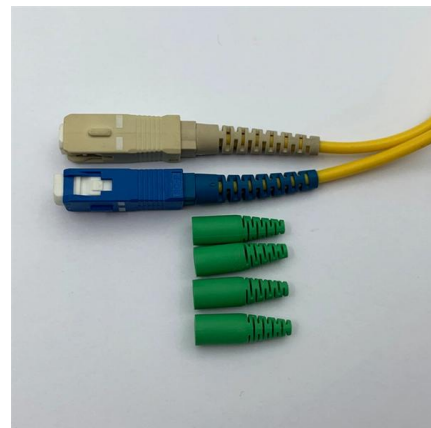


Connecting Cable Trays: Your Guide to Secure and

Learn common methods for connecting cable trays safely and efficiently. Our guide covers splice plates, quick-connects, and key tips for secure

Cable Trays: How to Choose the Right Type for Your

Conclusion Cable trays are an essential component of any cable management system, providing support, protection, and organization for cables.





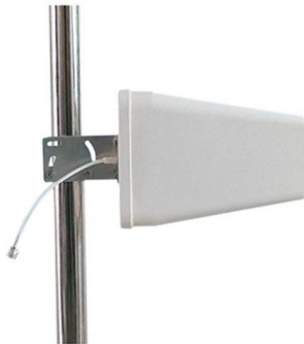
Cable Tray Installation

Supports for cable tray installations should provide strength and working load capabilities sufficient to meet the load requirement of the cable tray wiring system.



Cable Tray / Ladder Tray INSTALLATION PowerTray

General Installation Guidelines: For more information refer to the latest NEMA standards and local building codes. Trough tray field support and frequency depends on the weight and construction



How to make cable tray joint and intermediate support?

Joint RSS is pushed inside the cable tray and is fixed with the set of screws included with the joint. With the joint RSS, you can make intermediate support b

How to make wall support for cable trays?

Wall support SVK can be attached to the wall, mounting rail AS or ceiling supports HK1, HK2 and TP2. With wall support SVK, it is possible to adjust the gap



Ordering information

NO.	1	2	3	4
Model	F3491	F3502	F31203	F31804
Product name	Patch Panel	Patch Panel	Patch Panel	Patch Panel
Illustration				
H2	1	2	3	4
Maximum number of cores	96	192	288	384
Product size (including modules and adapters)	482,0*288,7*63,7mm	482,0*288,7*88,3mm	482,0*288,7*112,3mm	482,0*288,7*127,0mm
Standard color code	RAL9005	RAL9005	RAL9005	RAL9005

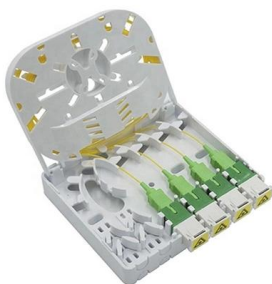


How To: Install Wall Brackets for Cable Trays and Ladders

Welcome to our comprehensive guide on installing wall brackets for different types of cable trays and cable ladders! In this video, we will walk you through

100+ Essential Questions Answered About Cable Trays:

Discover over 100 expert answers about cable trays, covering key topics like material selection, load capacity, installation methods, and maintenance.



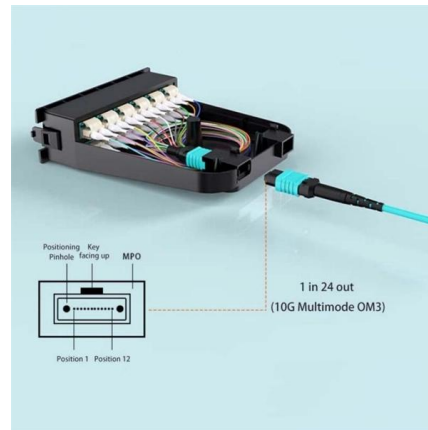
Guide to cable support systems

The cable support lengths and fittings can basically be designed as cable trays, cable ladders or mesh cable trays, in which cables are routed. On the one hand, fittings can be used for horizontal or



Cable Tray Technical Guide A practical guide to product selection and

In designing supports for a cable tray system, consideration should be given to the loads associated with future cable additions and any additional loading that may be applied to the cable tray system (e.g.,

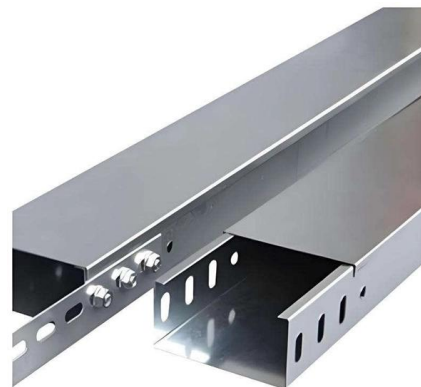


A Guide to Selecting Cable Trays for Engineering Design

The Importance of Selecting Cable Trays in Engineering Design In engineering design, the importance of selecting cable trays cannot be overstated.

Cable Tray Support Solutions: Safety, Compliance,

Learn how PHP Systems/Design uses the strength-stiffness ratio to create durable cable tray solutions, ensuring safety and reliability.



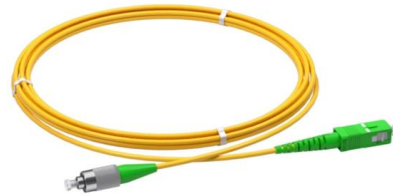
Guide to cable support systems

Examples of support elements include wall and support brackets, suspended supports and centre suspensions. Mounting elements are used to attach or fasten other elements to cable supports and



Ensuring Structural Stability in Cable Tray Systems

Learn how to ensure cable tray structural stability with design, installation, and maintenance tips to prevent downtime, accidents, and system



Contact Us

For datasheets, pricing, or custom telecom energy solutions, please visit:
<https://www.koskolong.co.za>