



Adam Tas Corridor Energy

How to replace the connector on a beam splitter





How to replace the connector on a beam splitter



MODEL #100424 27 T ON FULL BEAM LOG SPLITTER

Do not allow anyone to operate your log splitter who has not read the Operator's Manual or has not been instructed on the safe use of the log splitter. Never allow children or untrained adults to operate this

How to replace a log splitter flexible pump coupler

If your log splitter vibrates a lot or the hydraulic cylinder won't move, the flexible pump coupler could be broken or worn. This easy-to-follow DIY repair



BeamSplitters/Combiners

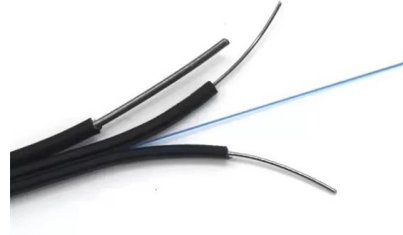
Operations Guide 2.1 Getting Started The usage of Doric Splitters/Combiners is extremely simple.

What are Beamsplitters?

Beamsplitters are optical components used to split incident light at a designated ratio into two separate beams. Additionally, beamsplitters can



be used in reverse to



Beam splitter

A beam splitter or beamsplitter is an optical device that splits a beam of light into a transmitted and a reflected beam. It is a crucial part of many optical experimental



Beam Splitter

A beam splitter is defined as an optical device that effects a linear transformation of fields presented at two input ports, producing output beams that are related to the input fields in a characteristic manner



How does a beam splitter work? Common types and use cases

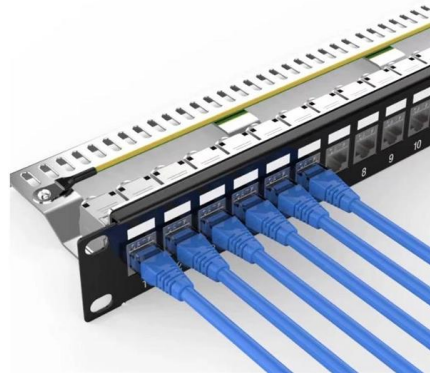
Understanding Beam Splitters Beam splitters are essential optical components used to divide a beam of light into two or more separate beams. They play a crucial role in various scientific,





How to Connect a Splitter to Another Splitter: A

In this guide, we'll explain how to safely connect a splitter to another splitter, covering both fiber optic and coaxial setups. We'll also share tips to



Covering the Basics of Beamsplitters -- Firebird Optics

What are Beamsplitters? Beamsplitters (also known as beam splitters or power splitters) are an optical component used to split an incident beam of

Champion 27 Ton Full Beam Log Splitter User Manual

Connect the loose end of the low pressure hydraulic hose (E) to the tapered hydraulic fitting on the hydraulic fluid filter (F). The low pressure hydraulic hose will only fit on this fitting to ensure correct



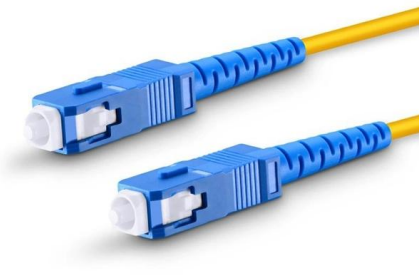
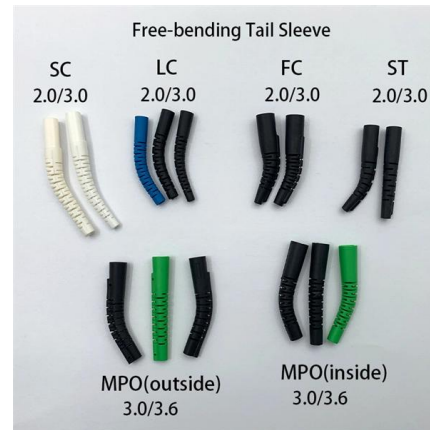
What is a Beam Splitter?

A beam splitter or power splitter is an optical device that can split an incident light beam e.g. a laser beam into two or sometimes more beams, which may or may not have the same optical



Gas Log Splitter

Clear the debris from the beam, wedge, and end plate. Use a damp cloth to clear exterior surfaces of the engine and log splitter. Use a soft bristle brush to remove excess dirt and oil. Use an air compressor



30 Ton LOG SPLITTER

Log Splitter Location This log splitter must have at least seven feet of clearance from combustible material. Leave at least three feet of clearance on all sides of the log splitter to allow for adequate

NVGRA: Removing and Installing Beam Splitter

You don't have to ever do this but if you want to, here's how!



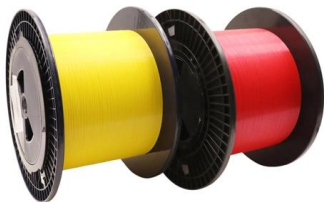
(FTIR) IRTracer-100 Replacement of Beam Splitter U , FAQ

1) Attach the BS handle to the beam splitter unit using the fixing screws, then hold the BS handle and pull straight upward. While doing this, never allow the surface of the beam splitter (round, transparent



20 TON HALF BEAM LOG SPLITTER

To split wood in the vertical position, release the pin on the beam latch located near the front end of the beam. Tilt the beam up until the foot plate is sitting squarely on the ground and the log splitter is stable.



Full Beam Gas Log Splitter_Manual

Never store the log splitter inside where there is a source of heat or an open flame, spark, or pilot light, such as a water heater, space heater, furnace, ~ clothes dryer, or other gas appliance.

Gas Log Splitter

Never store the log splitter inside where there is a source of heat or an open flame, spark, or pilot light, such as a water heater, space heater, furnace, clothes dryer, or other gas appliance.





MODEL #BD201257 28 TON FULL BEAM LOG SPLITTER

Always replace and tighten the gasoline cap securely after fueling. Never remove the gasoline cap or add gasoline while the engine is running or when the engine is hot. Only fill or drain gasoline

Polarization Beam Combiner and Splitter , Fiber-Optic

Polarization Beam Combiner/Splitter Newport's F-PBC Series Polarization Beam Combiner/Splitters can be used to combine light from two PM input fibers into a

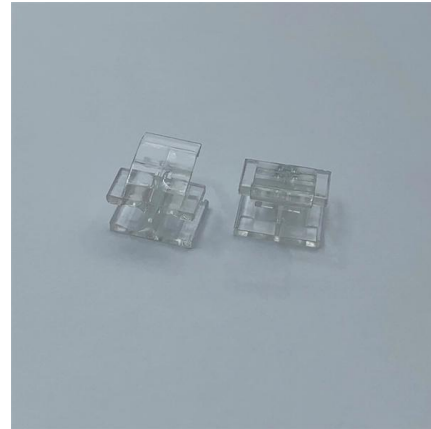


Do You Know How to Place and Use the Optical Splitter?

In the realm of optical communication networks, the optical splitter serves a vital role in dividing and distributing optical signals efficiently. Understanding how to properly place and use an

MODEL #BD201258 38 TON FULL BEAM LOG SPLITTER

Always replace and tighten the gasoline cap securely after fueling. Never remove the gasoline cap or add gasoline while the engine is running or when the engine is hot. Only fill or drain gasoline



Basic Optics Beam Splitter Manual

To rotate the beam splitter about the horizontal axis, loosen Screw A, adjust the bracket by hand until the beam is aligned with the target, and then tighten Screw A.



Log Splitter Parts at Jack's

Log Splitter Parts Log Splitter Parts: A well-maintained hydraulic system in your log splitter is necessary to ensure a smooth split on every log. If you have a leaky hydraulic hose or broken cylinder, the



How To Rebuild Wood Splitter Control Valve

To repair the control valve, first disconnect the power source, then remove and inspect the valve for damage. If it's damaged, it should be replaced;



What Is an Optical Splitter?

Fiber optic splitter, also referred to as optical splitter, fiber splitter or beam splitter, is an integrated waveguide optical power distribution device that



25-37-Ton Full-Beam Log Splitter Assembly (v1)

Instructional video on how to assemble your full-beam log splitter of 25-37 tons. Website: [more](#)

Covering the Basics of Beamsplitters -- Firebird Optics

Polarizing Beamsplitter While standard non-polarizing beamsplitters divide light by wavelength, a polarizing beamsplitter will split the incident beam



What Is a Beam Splitter and How Does It Work?

A beam splitter is an optical instrument that divides an incoming light beam into two or more separate beams. This passive device uses a specialized surface designed to both reflect and



Contact Us

For datasheets, pricing, or custom telecom energy solutions, please visit:
<https://www.koskolong.co.za>