



How to segment networks using an aggregation switch





Overview

Network segmentation with switches involves dividing a network into smaller, isolated segments to enhance security, improve performance, and simplify management. An aggregation switch is a network device that consolidates traffic from multiple access switches, wireless access points, or other edge devices and forwards it to core switches or routers. By bundling multiple network connections into a single high-bandwidth link, aggregation switches help. An Aggregation or "Top-of-Rack" switch is designed to connect everything in a rack at high speeds, then have an even bigger pipe out to the rest of the network. 3ad link aggregation enables you to group Ethernet interfaces to form a single link layer interface, also known as a link aggregation group (LAG) or bundle.



How to segment networks using an aggregation switch



How To Configure A Switch For Network Segmentation?

By following this comprehensive guide, you can effectively learn how to configure a switch for network segmentation, enhancing your network's security, performance, and manageability.

In-depth analysis: What is an aggregation switch?

In many network constructions, we have all heard of switches. So do you really understand switches? Why are aggregation switches often overlooked?



How To Configure A Switch For Network Segmentation?

How To Configure A Switch For Network Segmentation: A Comprehensive Guide Network segmentation with switches involves dividing a network into smaller, isolated segments to enhance



What is an Aggregation Switch? , Features and Practical Benefits

Additionally, the access switch includes user management features like address



authentication, user authentication, and user information collection in addition to offering sufficient



How To Set Up Switch Link Aggregation

Managed switches provide many advantages for a growing network, including support for VLANs, QoS, and Trunking. I touched on simple VLAN configuration a

Aggregation Switch

An Aggregation or "Top-of-Rack" switch is designed to connect everything in a rack at high speeds, then have an even bigger pipe out to the rest of the network.



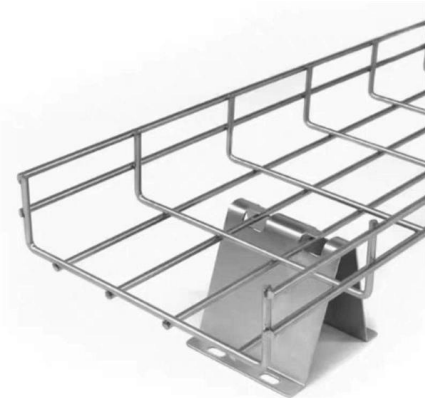
Aggregation Switch: Increasing the Priority of Special Traffic

You can configure required features after deploying a campus network. This document provides campus networks typical configuration examples and feature typical configuration examples.



Network Segmentation

Types of Network Segmentation 1. Physical Segmentation Physical Segmentation (or perimeter-based segmentation) separates device groups using



What Is an Aggregation Switch and How to Choose?

So, what exactly is an aggregation switch, and how do you choose the right one? Let's examine it in detail.

What Is an Aggregation Switch?

An aggregation switch sits between access layer switches and the core network, acting as an intermediary. It collects traffic from multiple access switches, aggregates it, and then forwards



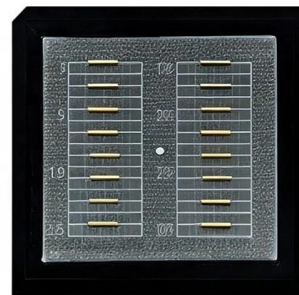
Aggregation Switch

In Chapter 4, we described several types of data center networking equipment including virtual switches, top of rack switches, end of row switches, fabric extenders, aggregation switches, and core switches,



Networking: Link Aggregation

Link aggregation (a.k.a. trunking, bonding or teaming) combines two or more network connections into one. To use link aggregation, your Ethernet cables must be



Gartner , Delivering Actionable, Objective Insight to

Gartner provides actionable insights, guidance, and tools that enable faster, smarter decisions and stronger performance on an organization's mission-critical priorities.

What is an Aggregation Switch?

The aggregation switch is located in the middle of the network architecture, which is equivalent to a middle-level manager of a company. It



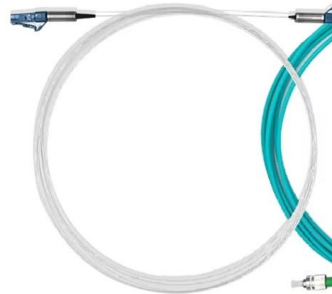


Aggregation Layer

Aggregation-layer submodule The aggregation-layer submodule plays a pivotal role in providing a highly reliable, scalable "middle layer" for bringing together the traffic from the access-layer submodule,

Google

Checking your browser before accessing undefined Click here if you are not automatically redirected after 5 seconds. Checking your browser - reCAPTCHA



Core, Aggregation, or Access Switches? Choose the

Discover the crucial differences between core, aggregation, and access switches. Find out which type can best transform your network's

Test Access Points Aggregation

Test access points (TAP) aggregation is an alternative solution to help with monitoring and troubleshooting tasks in the data center. It works by designating a device to allow the aggregation of

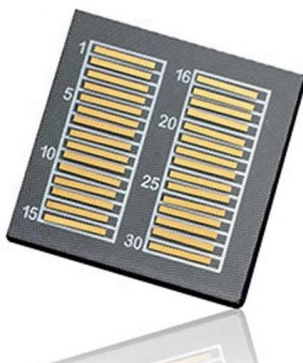


Wiley Online Library , Scientific research articles, journals, books

Hier sollte eine Beschreibung angezeigt werden, diese Seite lässt dies jedoch nicht zu.

What is an Aggregation Switch?

Additionally, the access switch includes user management features like address authentication, user authentication, and user information collection in addition to offering sufficient



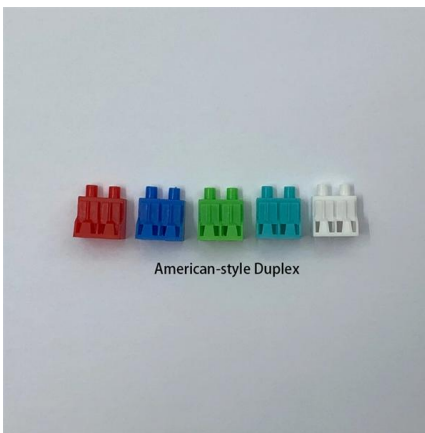
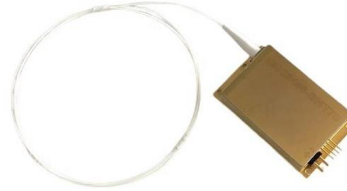
Why You Need a Fiber Aggregation Switch and How it

It involves using switches for fiber aggregation, which direct traffic from different locations so that it flows optimally through a network. Bringing



Aggregated Ethernet Interfaces Overview , Junos OS , Juniper Networks

You can configure LAGs to connect a QFX Series product or an EX4600 switch to other switches, like aggregation switches, servers, or routers. This example describes how to configure LAGs to connect



Everything You Need to Know About Aggregation Switch

Aggregation switches are typically deployed in enterprise networks, central network connectivity, and data transfer points. They are designed to

What is Switch Aggregation, Its Role and Selection Advice

This article wraps up "what is switch aggregation" and suggestions for choosing an aggregation switch. By considering these factors, network administrators can make informed



How Switch Aggregation Works -- In One Simple Flow

Switch aggregation is transforming how networks handle data traffic. By combining multiple switches into a cohesive system, organizations can



Understanding Switch Aggregation: A Comprehensive

In the context of network architecture, switch aggregation is an essential element, particularly in building high-capacity, resilient networks. It



Aggregation Switch

An aggregation switch refers to a type of switch used to connect multiple ToR switches to a core switch/router in a cloud data center network. It enables high-bandwidth aggregation ports to be

What is Link Aggregation (LAG) in Networking?

Link aggregation, sometimes referred to as LAG, which stands for Link Aggregation Groups, refers to the feature of network devices that allow the combining of





Link Aggregation: What is it, and How Does it Work?

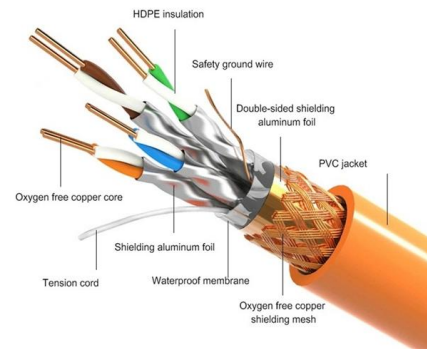
Link aggregation is a way of bundling a bunch of individual Ethernet links together so they act like a single logical link. Learn more on the Auvik blog



What is an Aggregate Switch?

What is an Aggregate Switch? Understanding Centralized Network Management An aggregate switch is a high-capacity network switch that consolidates connections from multiple

PRODUCT DETAILS



Contact Us

For datasheets, pricing, or custom telecom energy solutions, please visit:
<https://www.koskolong.co.za>