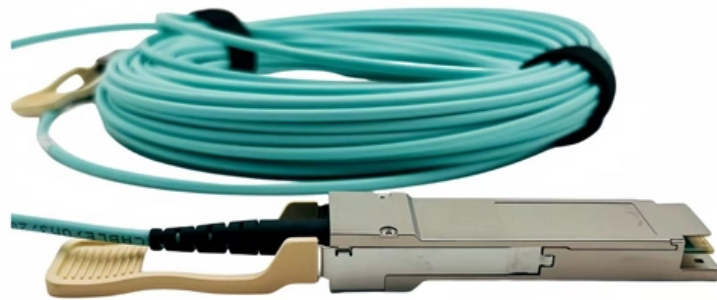




Adam Tas Corridor Energy

How to uninstall an industrial Ethernet switch





How to uninstall an industrial Ethernet switch



How To Delete A Network Switch With PowerShell

Learn how to delete a network switch using PowerShell with this comprehensive guide. Streamline your networking tasks and optimize your

Removal and Replacement Procedures

The online insertion and removal (OIR) feature supported on the Catalyst 6500 series switches allows you to remove and replace modules while the system is online. You can shut down the modules

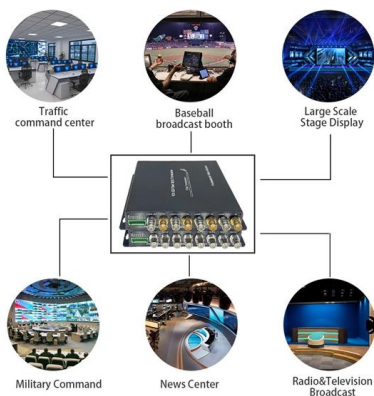
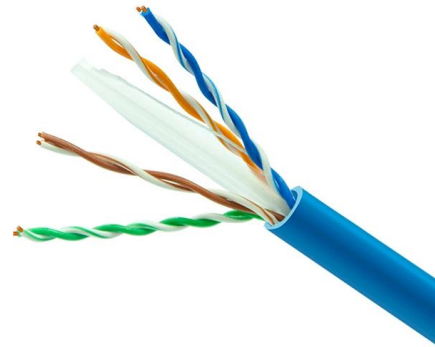


CMU School of Computer Science

å 10 ä ,EURå ?ä ,? 10 ä ,EURç(TM)¾ 100
ä ,EURç(TM)¾åå? 100 ä ,EURå ? 1000 ä ,EURå
?åå? 1000 ä ,EURâ--<ä ,EUR 101
ä ,EURç(TM)¾é>¶ä

Industrial Control Systems Cyber Security Institute

Hier sollte eine Beschreibung angezeigt werden, diese Seite lässt dies jedoch nicht zu.

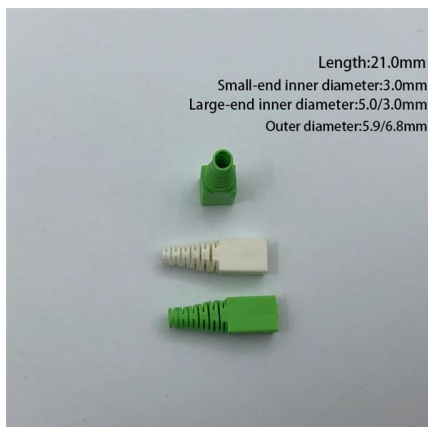


How can I delete family ethernet-switching? , SRX

KB 16667 contains some useful examples about how to configure ethernet ports for switching on SRXs, you can find it here. Here you can find an explanation on the interface-range statement.

How to remove vEthernet (Default Switch) Adapter?

The vEthernet (Default Switch) is created and managed by Hyper-V, so disabling it alone does not remove the adapter. Microsoft supports removing it



Help with removing etherchannel 6506 switch

The first phase is to remove the secondary switch that was setup with Etherchannel My plan in the future is to remove the Etherchannel from config and setup L3 routing with tagging (our



system switch ethernet delete

The system switch ethernet delete command is used to delete an Ethernet switch. This command is intended to be used to delete a switch that has been disconnected from the system, instead of



How To Install And Configure Industrial Ethernet? , Guide

Key Takeaway To install and configure Industrial Ethernet, start by planning the network layout. Identify the devices to connect, such as PLCs, sensors, and actuators, and ensure you have the right

Best 10Gb Switch of 2026: Tested and Reviewed

In this comprehensive guide, we've tested and reviewed the best 10Gb switches to help you make an informed decision.



Cisco IE 3100 switch DIN rail mounting application

The following figure shows how to remove the Cisco IE 3100 Switch from the DIN rail mount application. Press up on the switch to compress the spring in the DIN rail clip and rotate the switch away from the



`unsupervised_topic_modeling/topics/en/17/100/50/topics` at

Contribute to `annontopicmodel/unsupervised_topic_modeling` development by creating an account on GitHub.



How to Remove SFP Module from Switch Step-by-Step

Learn how to remove an SFP module from a switch safely and correctly. Step-by-step guide covering hot swap, latch types, stuck modules, and

Perle Ids-305F-Css20D-Xt

Perle Industrial-grade Ethernet Switches are designed to stand up to extreme temperatures, surges, vibrations, and shocks found in industrial automation, government, military, oil and gas, mining and





directory-list-2.4.txt/directory-list-2.4.txt at main

Customer stories Events & webinars Ebooks & reports Business insights GitHub Skills

5 Port Unmanaged Industrial Ethernet Switch

Push the lower portion of the Ethernet Switch back against the DIN rail, which will cause the bottom, spring-loaded DIN clip to snap in place. To remove the Ethernet Switch from the DIN rail, pull the



How to remove all the vEthernet (Default Switch) once

As in the screenshot above, I don't know why the vEthernet (Default Switch) on my Windows 10 laptop keeps reproducing itself and auto connecting

How to UNINSTALL an ethernet adapter using CMD (Batch file)

I am attempting to drum up some batch files specifically to automate network troubleshooting at my job. I'm relatively new to "complex" CMD commands, and have been looking into a way to uninstall an



Cisco IE 1000 Industrial Ethernet Switch Hardware

5. Remove the two captive screws that attach the power connector to the switch, and remove the power connector. Remove both connectors if you are



Cisco Industrial Ethernet 1000 Series Switches

Cisco Industrial Ethernet 1000 Series Switches - Some links below may open a new browser window to display the document you selected.



Setting Up an Industrial Network Switch for Beginner

Are you new to setting up industrial network switches and feeling overwhelmed? Don't worry, we've got you covered! In this comprehensive tutorial, we'll walk





ISW Series Managed Industrial Ethernet Switch Hardware Installation

Discharge the RJ45 Ethernet cable before plugging it into a port on the switch. Caution Unshielded twisted pair (UTP) cable can build up electrostatic charges when being pulled into a new installation.



Delete a configuration of an interface

Solved: Hi everybody, I want to know if there is any command that delete the configuration of an interface in one time, either of using "no" for each config. assume this config:

Managing industrial Ethernet switches

While traditional industrial networks are using Ethernet switches to prepare for the Industrial Internet of Things (IIoT) applications, there is a place for



Contact Us

For datasheets, pricing, or custom telecom energy solutions, please visit:
<https://www.koskolong.co.za>