



**Adam Tas Corridor Energy**

# How to use a 12-core fiber optic terminal box





## Overview

---

The 12 core fiber optic terminal box is light in weight and small size, flexible to use in different applications in optical cabling. Peel the cable, take off the outer and inner housing, as well as loose contract tube, and wash off the filling grease, leaving 1. Proper installation and maintenance of FTBs are essential to ensure the reliability and performance of the network infrastructure. Good quality fiber laying and termination systems help achieve minimal back reflection and low signal loss.



## How to use a 12-core fiber optic terminal box

---



### 12 Port Fiber Splice Termination Box for 1x8 Mini

This box comes with one cable inlet and 12 output port, supporting up to 12-core splice. It is made of engineering plastic that provides mechanical protection for

### 16 Core Outdoor Fiber Optic Distribution Box IP65 FDB FTTH Terminal Box

This 16-core Fiber Distribution Box (FDB) is a professional outdoor optical termination enclosure designed for FTTH access networks. Made of high-quality PC+ABS plastic with UV-resistant and



### AshwinD24's gists · GitHub

GitHub Gist: star and fork AshwinD24's gists by creating an account on GitHub.

### Comprehensive Guide to FTB: Installation and Maintenance

Proper installation and maintenance of fiber optic termination boxes is critical to ensuring the

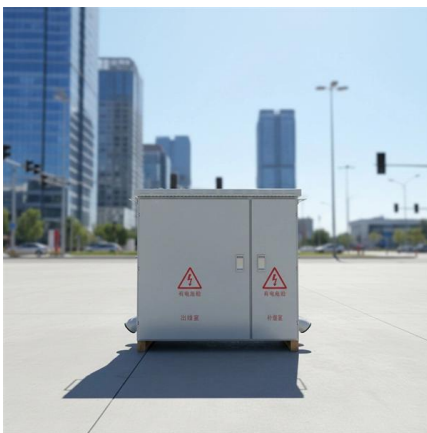


reliability, performance and longevity of your fiber optic network.



### 12 Cores Fiber Optic Fusion Splicing Terminal Box-ARTIC FIBER

This product is a multifunctional box body that can meet various customer needs through different internal components. The product uses high-quality PC+ABS products with reliable strength, and the



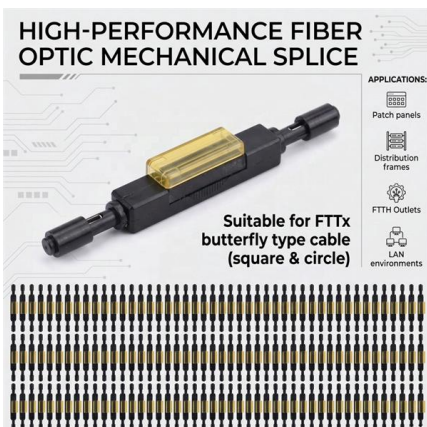
### 48 Port Fiber Optic Terminal Box, Fiber Optic Patch Panel, SC

48 Port Fiber Optic Terminal Box, Fiber Optic Patch Panel, SC, FC, LC Pigtail, ODF, 2U, 48 Multimode, OM1, OM2, OM3 The LC fiber optic connector box uses a LC duplex adapter (48 pieces) and a LC



### HJ FTTH Fiber Distribution Box 24 Core IP65 Wall Mount Optical Terminal

Optical splitter: meets box-type optical splitter 1:4, 1:8 Enclosure Material: ABS/PC/Metal Mounting Type: Wall-mount, pole-mount, flush-mount Applicable Cable Type: Standard optical cable / drop cable





## 16 Core Outdoor FTTH Fiber Distribution Box IP65 Waterproof Fiber Optic

0 Use FTTH FTTX FTTB Network Wireless Lan, Wired LAN, Wi-Fi, Gsm, 3 G Model Number SL-116b Brand Name SL/OEM/ODM Place of Origin Shandong, China Warranty Time 1 YEARS Port 8/16/24



## Ultra Fiber Optic Distribution Box, 12 Core FTTH Terminal Enclosure

[Versatile Fiber Optic Management] This 12-core ftth fiber optic terminal box is designed for seamless integration of incoming and drop cables. it provides efficient splicing winding storage and distribution

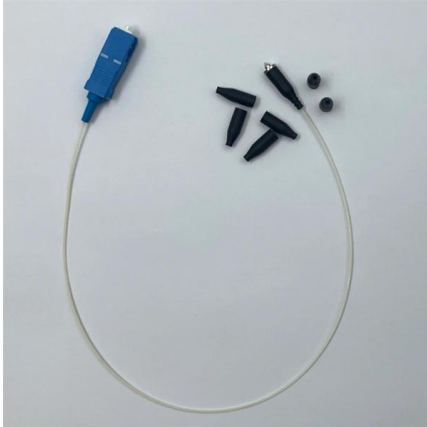
## Fiber Optic Termination Box, 12 Splices

The 12 cores plastic fiber optic distribution box provides a protected connection point for the feeder cable and drop cable in FTTH and FTTx networks. It integrates



## 12 core fiber optic termination box

Types of 12-Core Fiber Optic Termination Boxes A 12-core fiber optic termination box is a critical component in modern fiber optic networks, serving as a secure enclosure for splicing, terminating,



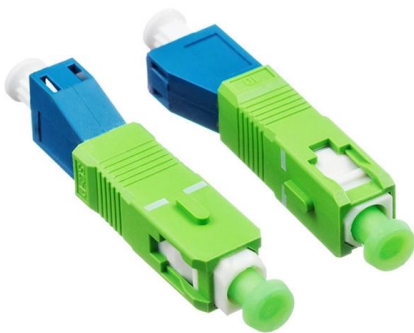
### All You Need To Know About Fiber Termination Boxes: Installation

How to Use the FTB? A Step-by-Step Tutorial. The simplest way with pre-terminated cables: For installation, you'll only need the FTB, pre-terminated



### 1:32 Cassette Optical Splitter Box Wall-Mounted FTTH Fiber Optic

Attributes Fiber optic distribution boxType FTTH FTTB FTTXUse Wireless Lan, Wiegand, FTTHNetwork FDB-48SModel Number APCXY or OEMBrand Name Zhejiang, ChinaPlace of Origin Warranty



### Ultra Fiber Optical Terminal Box 12 Core FTTH Optical Fiber

[VERSATILE USE] Can be wall-mounted for indoor and outdoor use, with -proof,,, and anti-aging PC+ABS material. [EASY INSTALLATION] Can accommodate 12 optical adapters or 1 to 8 insert





## Durable 12 Core Fiber Optic Terminal Box Manufacturer , Junpu

By following these guidelines, you can help protect the 12 Core Fiber Optic Terminal Box in harsh environments, ensuring the reliability and longevity of your fiber optic connections in challenging

## 12 Port Outdoor Fiber Optic Distribution Box , AZE

AZE's Fiber optical distribution box is used as a termination point for the feeder cable to connect with drop cable in FTTx communication network system



## 8 Port FTTH Fiber Distribution Box with 24 Cable

The 8 port fiber optic distribution box is equipped with 4 SC duplex adapter slots and supports a mini steel-tube PLC splitter installation, enabling it to function as a

## Fiber Optic Cable, Clamps, Boxes, for FTTH

JERA LINE-China Factory produce high-quality fiber optic cables, fiber cable clamps, and fiber optic boxes for outdoor & Indoor FTTH. ISO 9001 certified.



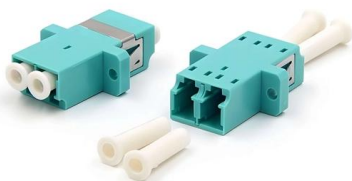
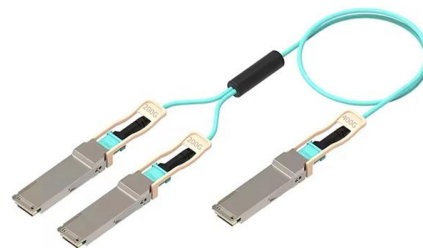
### 12 Core Fiber Optic Terminal Box

Lay the left fiber in the melting and connecting tray evenly, and fix the winding fiber with nylon ties. Use the trays from the bottom up. After all the fiber has been connected, cover the top layer and fix it.



### Illustration of How to Connect the Terminal box in FTTH solution

The outdoor optical fiber cable is connected to the terminal box. The purpose is to fuse the optical fiber and the pigtail in the optical cable, and lead it out through a jumper.



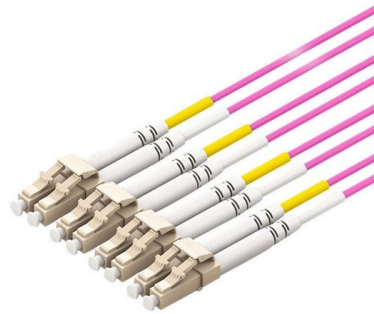
### Fiber Optical Terminal Box 12 Core/Splitter FTTH

12 Core Plastic Optical Terminal Box, 12 Port Optical Fiber Termination box Size: 215x215x50mm Melt receive flip type design simple to use, melting with complete



## OptiTap® Compatible MST Box: 2026 Buyer's Guide

Evaluate an OptiTap® compatible MST box for 2026 FTTH networks. Compare OEM vs third-party terminals, analyze IP68 risks, and avoid procurement mistakes.



## Used 1x8 PLC Fiber Splitter 12 Core SC SM FTTH Fiber Optic Terminal

The splitter termination box is suitable for fiber terminal point to complete connection, distribution and scheduling between perimeter fiber cables and terminal equipment, especially suitable for mini

## 4 Core Fiber Termination Box with 12 Outlet Ports -

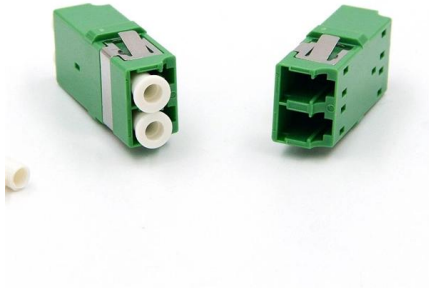
indoor& outdoor 12 port Fiber Access Terminal Box can hold 2 sc duplex adapter for 4 core termination,allows 8 splice and 1x4 optical signal splitting.

Various specifications optional



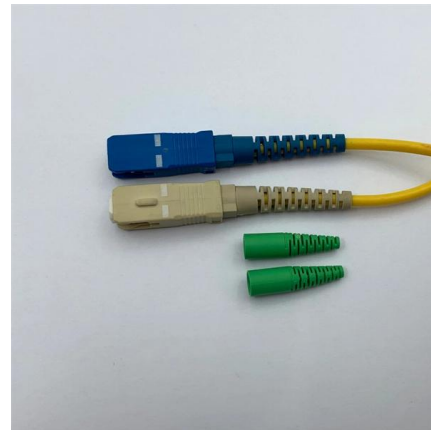
## 12 cores fiber splice box ftth fiber optic distribution box

Its core use is to terminate fiber optic cables and connect the cable's core and pigtail. The typical termination box consists of three parts, the fiber connector protection



### **4 Port Fiber Optic Terminal Box Wall Mounted Steel**

4 Port Fiber Optic Terminal Box Wall Mounted Steel Plate SC LC is designed in a simply but effective way for low density fiber cablings. It is a cover and base box.



## **Contact Us**

---

For datasheets, pricing, or custom telecom energy solutions, please visit:  
<https://www.koskolong.co.za>