



Adam Tas Corridor Energy

How to view information about optical modules



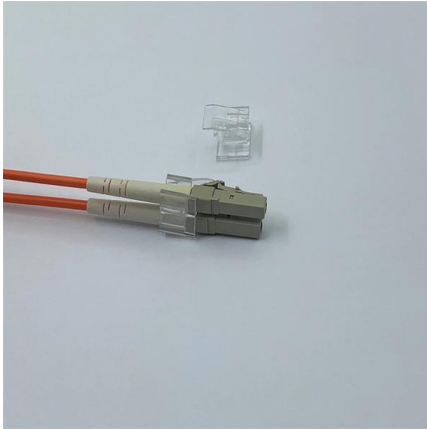


Overview

Run the following command to view device board information and identification details of all optical modules: `show inventory` The output includes the module type, serial number, Cisco-compatible part number, and other details, which are retrieved from the pre-programmed data in the. When the optical module on an interface is faulty, you can run the `display` commands to view information about the optical module. This article provides instructions on how to view the Optical Module Status on your switch through the Command Line Interface (CLI).



How to view information about optical modules

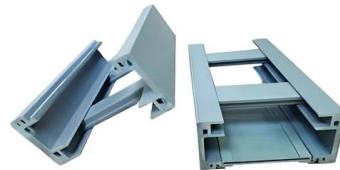


How to view the optical module DDM information?

DDM (Digital Diagnostics Monitoring) is a feature that is included in optical modules, such as SFP, SFP+, QSFP, and QSFP+ transceivers. DDM provides detailed information about the optical

Optical Transceiver Manufacturer, How To Check Optical

Optical module identification and status monitoring are essential daily tasks for network engineers maintaining Cisco switching systems. This guide provides



How To View Port Status And Optical Module Information In ARUBA

Optical modules work in the switch usually need to read the internal information of the module to understand its working status, such as module connectivity and real-time collection of light,

Displaying Optical Module Information

Run the display transceiver diagnosis interface [interface-typeinterface-number] command to



view diagnostic information about a specified optical module. This command displays the digital diagnostic



PRODUCTION NAME	Frequency conversion control cabinet
PROTECTION DEGREE	IP55
VOLTAGE	220/380V
SIZE	customized as required
MOUNTING WAY	Floor-standing
APPLICATION	Indoor and outdoor

How To View Port Status And Optical Module

We have previously covered how to read optical module information on mainstream switch brands such as Cisco, H3C and Huawei. However, Fortinet uses a

Global Leader in Materials, Networking, and Lasers

Transform global communications networks with our comprehensive portfolio of coherent transceivers and modules, lasers, amplifiers, and photonic devices. Our



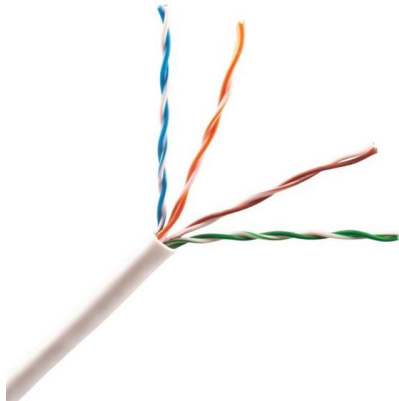
How To View Port Status And Optical Module Information On Cisco

Additionally, identifying module information helps detect coding compatibility between the module and the switch. The following introduces the specific operations to view the working status



How to View Optical Module Status on a Cisco Switch

In this Cisco Tech Talk, learn how to view the optical module status on a Cisco switch using the Command Line Interface (CLI). This video demonstrates



How to view the optical module DDM information?

DDM provides detailed information about the optical module's performance and status, allowing network administrators to monitor and troubleshoot network issues. In this article, we will

Displaying Optical Module Information

When certifying an optical module, Huawei comprehensively verifies the functions of the optical module to ensure the optical module quality.



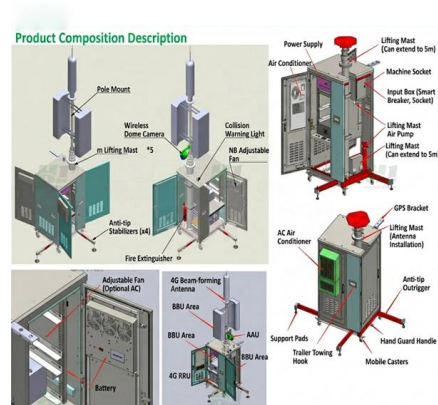
Displaying Optical Module Information

Run the display transceiver diagnosis interface [interface-type interface-number] command to view diagnostic information about a specified optical module. This command displays the digital diagnostic



View the Optical Module Status on a Switch

This article provides instructions on how to view the Optical Module Status on your switch.



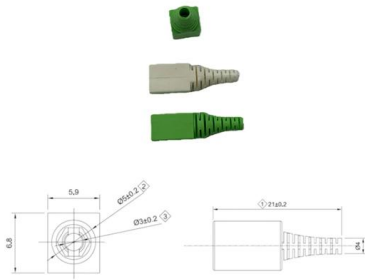
Everything You Need to Know About Optical Modules

Optical modules are electronic devices used in communication systems to transmit optical signals. These modules convert electrical signals into optical



Intel® Silicon Photonics

Hands-on with the Intel Co-Packaged Optics and Silicon Photonics Switch Patrick Kennedy from ServeTheHome got to check out Intel's live demonstration of co-packaged optics switch passing



How To View Port Status And Optical Module Information On PALO

Optical modules work in the host usually need to read the internal information of the module to understand its working status, such as module connectivity and real-time collection of

AI data centers hit interconnect limits, boosting optical module demand

The surge in optical module stocks reflects a deeper shift in AI infrastructure: the bottleneck is no longer computing power alone, but how that power is connected.



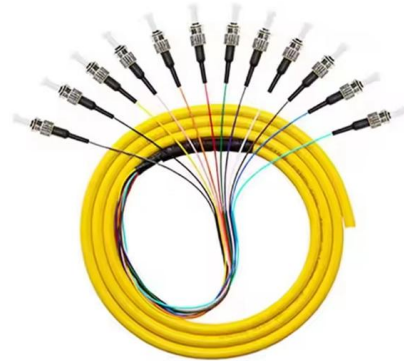
View the Optical Module Status on a Switch through the Command

Introduction The Cisco Small Business Series Switches allow you to plug in a Small Form-factor Pluggable (SFP) transceiver in their optical modules to connect fiber optic cables. Once the



How to View the DDM Information of Optical Transceiver

Modern optical transceivers support standard Digital Diagnostics Monitoring (DDM) functions, which enable real-time monitoring of modules'



Understanding Optical Modules: Working Principles,

Explore the working principles, structures, and performance metrics of optical modules, essential components of optical fiber communication systems. Learn



View the Optical Module Status on a Switch through the Command

Once the transceiver and fiber optic cable are plugged in properly in the switch optical module, you should be able to view the current information for the optical connection, which helps



Understanding Optical Modules: Types and

Optical modules come in various types, and their external structures are not exactly the same. However, their basic compositional structure includes the following





How To View Port Status And Optical Module

To monitor the operating status of optical modules installed on a switch, it is necessary to read the module's internal information, including link



How To View Port Status And Optical Module

When an optical module is running on a switch, it is often necessary to read its internal information to check the operating status, including link status, real-time

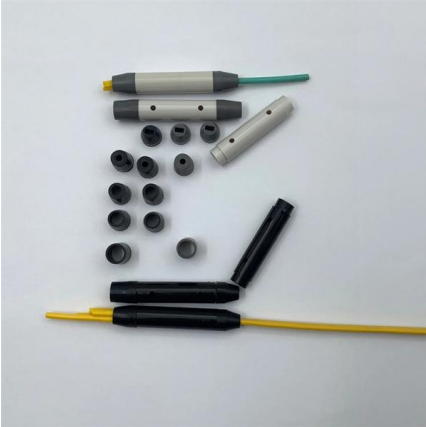
How To Read Optical Module Information On Huawei Switches

1. Optical Module Status Check Run the following command to view interface information: display interface The output includes interface rate, module type, link



Optical module design resources , TI

View the TI Optical module block diagram, product recommendations, reference designs and start designing.



View the Optical Module Status on a Switch through the Command

This guide provides complete, step-by-step CLI commands to view module type, DOM/DDM diagnostic data, vendor details, and compatibility information, fully



How To View Port Status And Optical Module Information On

When optical modules are installed on switches, it is necessary to read internal module parameters to monitor operating status, including link connectivity, real-time transmit/receive optical



Displaying Optical Module Information

Context If an optical module on an interface is faulty, you can run the display commands to view information about the optical module.





Contact Us

For datasheets, pricing, or custom telecom energy solutions, please visit:
<https://www.koskolong.co.za>