



Adam Tas Corridor Energy

How to waterproof fiber optic cable junction boxes





Overview

These enclosures must shield fiber connections from water, dust, and heat or cold. They also work well in changing temperatures, keeping your network running in tough weather. Ingress Protection (IP) ratings define the level of protection an enclosure provides against the intrusion of solid particles and liquids. In waterproof junction box, cable waterproofing is very important, especially in outdoor or humid environments. Here are several common cable waterproofing methods: Sealing glue: Use sealing glue to fill the connection points and interfaces of waterproof distribution box cables to prevent moisture.



How to waterproof fiber optic cable junction boxes



96 Cores Fiber Junction Box

Discover 96 cores fiber junction box with IP65 waterproof rating, ideal for ont fiber box and fiber optic cable core applications. CE certified for reliable, high-speed connectivity in telecom and data networks.

network cable junction box , Newegg

BUCIER FTTH Fiber Panel Box Enclosure, 2 Core Fiber Optic Terminal Distribution Junction Box Double-Port SC/APC Type Panel Fiber Box ABS Plastic Outdoor Waterproof Dustproof DIY Case



Indoor junction box, Indoor terminal box

F2H-OTB-A Series Indoor Optical Termination Box is used as terminal equipment of fiber optic cable for optical fiber fixation, fusion and patching on wall. Features: 1.

Amazon : Fiber Distribution Box

ETS Fiber Optic Distribution Box 4 Core - IP65 Waterproof, UV Resistant, FTTH, FTTx, Wall/Pole Mountable, Industrial Networks, Fusion Splicing,

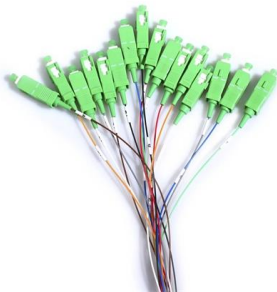


SC/LC/FC Adapters, Cable Management Add to cart



2025 Guide to Fiber Optic Splice Enclosures for Extreme

Ensure reliable networks in extreme weather with fiber optic splice enclosures. Learn about materials, weatherproof ratings, and installation tips for



IP68 Fiber Optic Junction Boxes: Weatherproof

Discover weatherproof IP68 rated fiber optic junction boxes for outdoor use in fiber networks. Ensure reliable connectivity in any environment.



IP67 Outdoor Enclosure Waterproof Junction Box

Protect your fiber optic connections with this IP67-rated waterproof junction box designed for harsh outdoor environments. This ABS plastic



Zonejoy Fiber Optic Extension Cable OTDR Single Mode Waterproof

FIBER TEST CABLE: OTDR fiber test extension cord kit, single mode optical fiber, distance up to 2000 meters, with stable performance and reliable operation. FOR OTDR TESTER: This extension cord kit



High-Quality Fiber Optic Terminal Boxes

Fiber Optic Terminal Box (FTB) is a compact fiber optic management product. It is widely used for FTTx cabling of optical fiber and cable, providing an ideal solution

Fiber Optic Distribution Boxes (FDB) & ODF Supplier

Fiber distribution box is suitable for the wiring connection of optical cable and optical communication equipment, through the adapter in the wiring box, the optical



Indoor FTTH Fiber Optical Splicing Box 6 Ports Terminal

Unitekfiber produces various types of FTTH fiber optical splicing box. It is made of high impact plastic material. The splicing box is widely used as a termination point



Understanding Fiber Optic Junction Boxes: A

A fiber optic junction box, also known as a fiber optic distribution box or termination box, is a protective enclosure that facilitates the connection and



All Kinds of Fiber Optic Patch Cords - SC, LC, FC, ST

Learn about SC, LC, FC, and ST fiber optic patch cords, their uses in FTTH, telecom, and data centers, and how to choose the right type.

How to Choose a Fiber Optic Distribution Waterproof Outdoor Box

When selecting the best fiber optic distribution waterproof outdoor box for your network infrastructure, prioritize models with at least an IP65 rating, durable UV-resistant materials like ABS





Splicing Fiber Optic Machine

Splice Fiber Optic Splice Sleeves For Enhanced Wire 60mm Brand Name: DYS Model Number: Heat-shrinkable Type:Double:Good Moisture Waterproof Length: 60mm Steel OD: 1.5mm Materails:

Best Waterproof Fiber Optic Splice Closures for Outdoor and Indoor Use

Protecting fiber connections in harsh outdoor or industrial environments requires robust, waterproof splice closures. This guide highlights five top-rated, IP-rated options designed to shield signal



WISDUM FTTH Fiber Panel Box Enclosure,2 Core Fiber Optic

Buy WISDUM FTTH Fiber Panel Box Enclosure,2 Core Fiber Optic Terminal Distribution Junction Box Double-Port SC/APC Type Panel Fiber Box ABS Plastic Outdoor Waterproof Dustproof DIY Case

Amazon : PNGKNYOCN 2 in 2 Out Horizontal

Fibre optic fusion box is made of high quality ABS+PC material, durable, stable, corrosion resistant, sealed and waterproof, safe and worry-free Size: 320 * 120 *



12 Core Fiber Distribution Box, 12 Port FTTH

Eardion 12 Port FTTH Fiber Distribution Box Splitter Box- Fiber Optic Terminal Junction Splitter Box with LC Fiber Cable Coupler It is suitable for optical fiber



A complete analysis of the cable sealing process for waterproof

In waterproof junction box, cable waterproofing is very important, especially in outdoor or humid environments. Here are several common cable waterproofing methods:



A Step-by-Step Guide to Fiber Optic Cable Installation

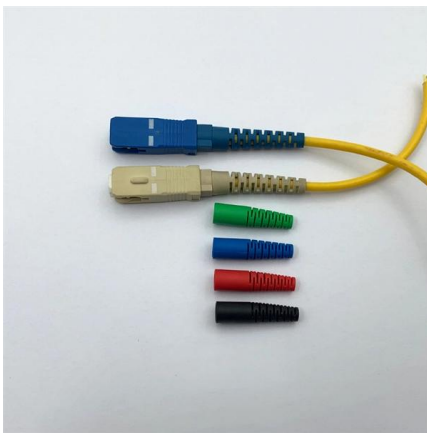
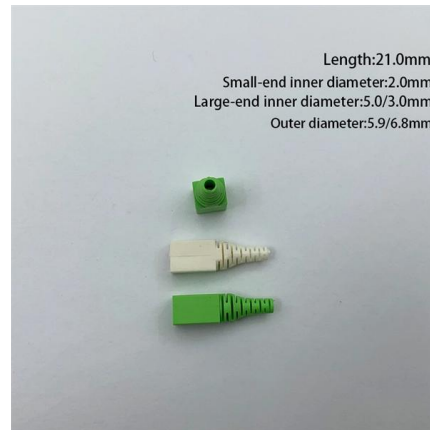
However, the performance of fiber optic technology depends heavily on proper fiber optic cable installation. Whether it's





How to Seal and Waterproof Direct Buried Optical Fiber

It can be seen that the use of the dome-type closure is the best to prevent water ingress of the direct buried optical cable closure.



Fiber Optic Junction Box Suppliers, Manufacturer, Distributor

Alibaba offers 659 Fiber Optic Junction Box Suppliers, and Fiber Optic Junction Box Manufacturers, Distributors, Factories, Companies. There are 445 OEM, 396 ODM, 137 Self Patent. Find high quality

Amazon : Fiber Junction Box

Add to cart Fiber Optic Junction Box, 2 in 2 Out Splice Box, Mini Small Square Type 12 Core Outdoor Waterproof Protection Box Add to cart 4 Core FTTH Fiber Distribution Box, 4 Port Fiber Distribution



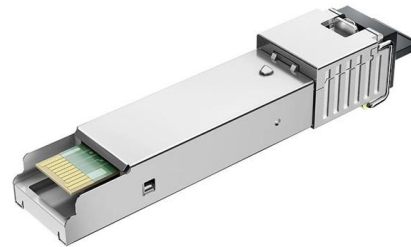
How to Properly Install a Waterproof Junction Box for

Learn how to install waterproof junction boxes to protect wiring from moisture and failures. Get practical steps and safety tips--come read and



Amazon : Fiber Optic Splice Box

Add to cart Fiber Optic Junction Box, 2 in 2 Out Splice Box, Mini Small Square Type 12 Core Outdoor Waterproof Protection Box Add to cart FTTH Fiber Optic Waterproof Box, IP67 Rated Outdoor/Indoor



Wholesale Fiber Optic Junction Box Price Waterproof IP65 Rating

Discover fiber optic junction box prices with IP65 waterproof ratings, ABS/PC materials, and FTTH applications. Compare competitive quotes.

IP Waterproof Ratings Explained for Fiber Enclosures

Engineering explanation of IP waterproof ratings including protection mechanisms and their relevance in fiber optic terminal boxes and closures.





GELRHONR FTTH Fiber Panel Box Enclosure, 2 Core Fiber Optic

Amazon : GELRHONR FTTH Fiber Panel Box Enclosure, 2 Core Fiber Optic Terminal Distribution Junction Box Double-Port SC/UPC Type Panel Box ABS Plastic Outdoor Waterproof Dustproof DIY

Contact Us

For datasheets, pricing, or custom telecom energy solutions, please visit:
<https://www.koskolong.co.za>