



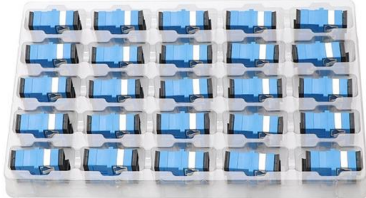
Adam Tas Corridor Energy

How to wire the SM1310 optical module





How to wire the SM1310 optical module



Accessories MINI-GBIC-LX-SM1310 1000BASE-SX SFP 1310-nm 10

The MINI-GBIC-LX-SM1310 is aligned to IEEE 1000BASE-LX optical specifications and supports a link length of up to 10 kilometers over a single-mode fiber (SMF) with an LC connector. It adopts the SFP

Huawei SFP-GE-LX-SM1310 Compatible 1.25Gbps SFP 1000BASE

Huawei SFP-GE-LX-SM1310 compatible optical transceiver is a dual fiber 1000Mbps Small Form-factor Pluggable SFP module for use in 1000BASE Ethernet network. SFP LX provides 1Gb/s throughput



RG 10GBASE Series

XG-SFP-LR-SM1310 Module The XG-SFP-LR-SM1310 is aligned to IEEE 10GBASE-LR optical specifications and supports a link length of up to 10 kilometers over a single-mode fiber (SMF) with

SFP-GE-LX-SM1310-IN

SFP-GE-LX-SM1310-IN Gigabit Single-Mode 10km Optical Module Specification Download How to buy



SFP-GE-LX-SM1310-A 1.25G 1310nm 10km Optical

SFP-GE-LX-SM1310-A The SFP transceivers SFP 1.25G 1310nm 10km CISCO, HUAWEI, H3C, Juniper, D-link, HP, IBM, dell, Mikrotik, Aruba, Quidway



10GBASE-LR SFP+ 1310NM 10KM DOM TRANSCEIVER, FS

VII. DIGITAL DIAGNOSTIC INTERFACE DEFINITION
The 2-wire serial interface addresses of the SFP+ module are 1010000x (A0h) and 1010001x (A2h).



H3C SFP-GE-LX-SM1310-D Datasheet

This H3C SFP-GE-LX-SM1310-D SFP module is suitable for use with H3C networking equipment. This hot-pluggable transceiver features a 1310nm FP transmitter and PIN receiver into a LC Duplex





SFP-1310T-20-SMF

SFP-1310T-20-SMF Fast Ethernet Optical Module
> Single mode single fiber > LC port > 1310 nm sending, and 1550 nm receiving > Transmission distance up to 20 km



Huawei SFP-GPON-SM1310 2488M/1244M 20km SC/PC Optical Module

What should I do if the SFP-GPON-SM1310 is not working properly? Ensure the SFP-GPON-SM1310 is correctly seated in the slot, check the fiber connections, and ensure network compatibility with your

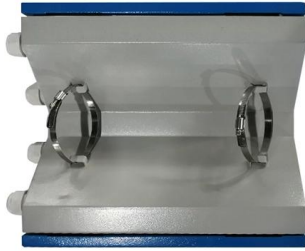
ZTE 10km 1310nm 10G SFP+ Price and Test Report

Buy ZTE 10km 1310nm 10G SFP+ Module with Compatible Test Report Assured, 3-Level Quality Control, at 8-Year Gold Supplier Thunder-link



Sfp-xg-lx-sm1310-i-c Datasheet

This H3C® SFP-XG-LX-SM1310-I compatible SFP+ transceiver provides 10GBase-LR throughput up to 10km over single-mode fiber (SMF) using a wavelength of 1310nm via an LC connector.



SFP-FE-LX-SM1310-BIDI 02315203 Transceiver optic Huawei

Transceiver optic Huawei SFP-10G-ZR 02310SNN
10Transceiver optic GBase-ZR,SFP+, 10G,Modul
unic (1550nm,80km,LC) 400.00 Cite?te mai mult



SFP-GE-LX-SM1310 (02315200)

This document provides specifications and details about the SFP-GE-LX-SM1310 optical module for Huawei devices.

1310nm FP Laser Diode SM Module

Specifications Optical And Electrical
Characteristics (T=25+/-3oC unless specified
otherwise)





Ixia SM1310 Compatible 1.25Gbps SFP 1000BASE-LX 1310nm 10km

Ixia SM1310 compatible optical transceiver is a dual fiber 1000Mbps Small Form-factor Pluggable SFP module for use in 1000BASE Ethernet network. SFP LX provides 1Gb/s throughput up to 10km over

Huawei SFP-GE-LX-SM1310 1GE 1310nm 10km SFP

Huawei SFP-GE-LX-SM1310 1GE 1310nm 10km single-mode SFP module for Huawei switches and routers. Check real-time price, stock and lead time. Global



Haile SFP-GE40-SM1310-A 1.25G Gigabit Single Fiber Optical Module

Product Overview The Haile SFP-GE40-SM1310-A is a high-performance Gigabit single-mode single fiber optical module designed for reliable long-distance data transmission. Operating at 1.25Gbps,

Huawei SFP-GE-LX-SM1310 SFP Transceiver Module

The SFP-GE-LX-SM1310 transceiver module provides a low cost high-performance connection. The SFP-GE-LX-SM1310 is 100% compatible with all Huawei series switches and modules which support



Ordering information

NO.	1	2	3	4	5	6
Model	SP1201	SP1202	SP1004	SP101	SP1203	SP1204
Product name	Patch Panel	Patch Panel	Patch Panel	Patch Panel	Patch Panel	Patch Panel
Illustration						
HU	1	2	4	1	2	4
Maximum number of cores	144	288	576	144	288	576
Product size (including module and adapter)	482.8*217.7*44 mm	482.8*217.7*88.1 mm	482.8*217.7*131.7 mm	482.8*217.7*44 mm	482.8*217.7*88.1 mm	482.8*217.7*131.7 mm
Standard color code	RAL9005	RAL9005	RAL9005	RAL9005	RAL9005	RAL9005



Ruijie MINI-GBIC-LX-SM1310 Optical Transceiver Module, Single

MINI-GBIC-LX-SM1310 The MINI-GBIC-LX-SM1310 is aligned to IEEE 1000BASE-LX optical specifications and supports a link length of up to 10 kilometers over a single-mode fiber (SMF) with

Everything You Need to Know About 1310nm Optical

1310nm optical module offers reliable, cost-effective data transmission for metro, campus, and enterprise networks. Compare performance, reach, and



SFP-GE-LX-SM1310 Datasheet Overview

The Supported Switches Figure 1. SFP-GE-LX-SM1310 can be installed in the switch's SFP slot.



SFP-FE-LX-SM1310-BIDI 02315203 Huawei Optical Transceiver

Optical Transceiver, eSFP, FE, BIDI Single-mode Module (TX1310/RX1550, 15km, LC)



SFP-FE-LX-SM1310-BIDI

PRODUCT DESCRIPTION FLUXLIGHT's SFP-FE-LX-SM1310-BIDI Small Form Factor Pluggable (SFP) transceivers are compatible with the Small Form Factor Pluggable Multi-Sourcing Agreement (MSA),

S-SFP-FE-LH40-SM1310 02317344 Huawei CloudEngine S8700-4

Facebook Twitter LinkedIn Google + Pinterest
Email Tumblr Description Inquiry 02317344 S-SFP-FE-LH40-SM1310 Optical Transceiver, eSFP, FE, Single-mode Module (1310nm, 40km, LC)



Ruijie SFP-SM1310 Manuals , ManualsLib

View online or download Ruijie SFP-SM1310 Installation And Reference Manual.



Contact Us

For datasheets, pricing, or custom telecom energy solutions, please visit:
<https://www.koskolong.co.za>