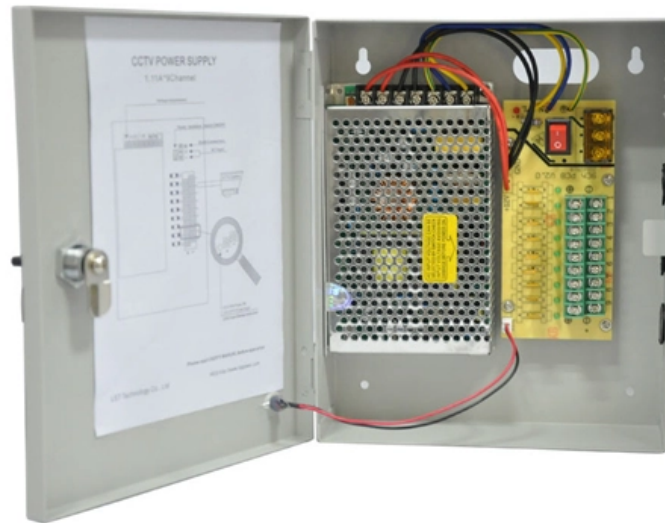




Adam Tas Corridor Energy

How to wire the power supply unit of a network server rack





How to wire the power supply unit of a network server rack

Best practices for Rack Mounting Your Power Supply

Learn best practices for installing a power supply in a rack mount. These practices will ensure the unit's safety, reliability, and performance.



Complete Guide for Power Distribution in Servers, Racks, and Data

A Power Distribution Unit (PDU) is a specialized electrical device designed to distribute power from a single input source to multiple output receptacles, specifically engineered for data center and IT



Beginner's Guide to Server Power Distribution Unit Installation

Safely install a server power distribution unit for reliable power, proper rack compatibility, and reduced downtime in your data center or server room.



Rack Mount PDU -- Computer Rack Power Distribution

Server power distribution units for server racks!
Wide range of PDUs, power supply & strips for



network cabinets. ? Competitive prices. ? Shop now.



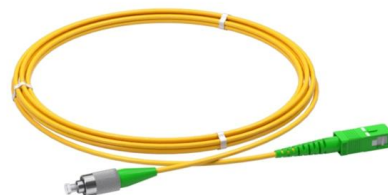
Complete Guide for Power Distribution in Servers, Racks, and Data

Power Distribution Units (PDUs) are the crucial link between your facility's electrical infrastructure and your IT equipment. These devices ensure clean, stable power reaches every server, switch, and



9 tips: How to wire your server cabinet correctly

With our 9 tips, we provide you with step-by-step instructions that will make correct cabling a breeze. Get comprehensive advice now! Proper cabling of



How To Properly Install Server Rack Power Distribution

A Power Distribution Unit (PDU) in a server rack is a device that distributes electrical power to servers, networking hardware, and other data center equipment.





Powering your server racks

Properly planning the power feeds and distribution to your server racks will help keep your new racks functional for today's needs, as well as provide for



Open rack server (ORv3) power supply unit (PSU)

View the TI Open rack server (ORv3) power supply unit (PSU) block diagram, product recommendations, reference designs and start designing.

Your Sustainability Transformation Partner , Fujitsu Global

Our purpose: Make the world more sustainable by building trust in society through innovation.



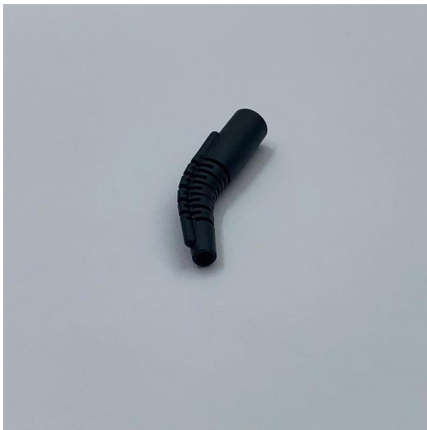
Uninterruptible power supply

An uninterruptible power supply (UPS) or uninterruptible power source is an electrical apparatus that provides emergency power to a load when the input power source



SERVER POWER AND RACK INSTALLATION

Obviously, without power you don't have a working server. Selecting a server with the type of power supply you need and ensuring its continued operation through the use of an uninterruptible power



How To Properly Install Server Rack Power Distribution

Introduction Installing server rack power distribution is a crucial step in setting up a reliable and efficient data center or server room. The proper

Power Distribution Unit For Server Rack Tutorial

Power Distribution Unit For Server Rack Tutorial
A rack mounted Power Distribution Unit (PDU) is a tool for selectively switching AC and/or DC power to your devices.





How to Correctly Wire a Network Rack? - VCELINK

Discover how to wire a network rack with step-by-step instructions, expert tips, and best practices.

How to Correctly Wire a Network Rack? - VCELINK

Whether you're setting up a domestic network, managing a small business, or organizing a data center, wiring the network rack correctly is



Network Rack Installation 101 - VCELINK

Master server and network rack setups effortlessly with easy steps, pro tips, and best practices for beginners, DIYers, and pros!



How To Wire a Server Rack Tips & Best Practices

It's time to wire up your network or server rack! Don Schultz and Dave Harris walk you through essential tips and best practices for organizing your server rack for optimal performance



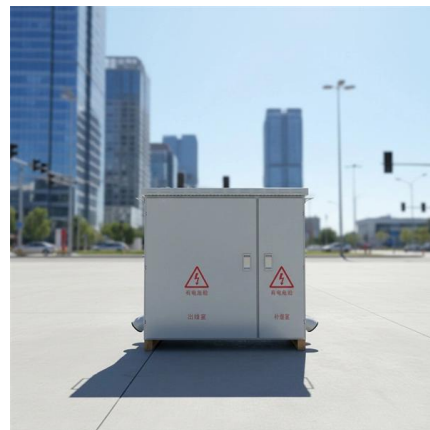
Rack PDU Selection Guide: Power Distribution Units for

Explore our comprehensive Rack PDU Selection Guide for server racks. Find the perfect power distribution unit from Eaton for your data center or



Server Rack PDU Guide , Rack Power Distribution

A guide to rack mount server rack PDUs including technologies, options and planning considerations from Server Room Environments.



SERVER POWER AND RACK INSTALLATION

Power is an obvious requirement for a server, and this chapter shows you how server-level power supplies differ from standard desktop workstation power supplies. While a server power supply





How to Install a Rackmount Power Distribution Unit (PDU)

FAQs What is a PDU in a server rack? A Power Distribution Unit (PDU) in a server rack is a device that distributes electrical power to servers, networking hardware, and other data center equipment. Why



How To Wire a Server and Network Rack , Tips & Best

How do you figure out the right number of rack units for your network rack? Best practices for network rack and server rack cabling Labeling your

Discover Europe's digital cultural heritage , Europeana

Hier sollte eine Beschreibung angezeigt werden, diese Seite lässt dies jedoch nicht zu.



How to Setup a Server Rack: Tips and Tricks {Step-by

A server rack (or a server cabinet) holds and organizes IT equipment, such as dedicated servers and network switches. Installing a server rack has



Contact Us

For datasheets, pricing, or custom telecom energy solutions, please visit:
<https://www.koskolong.co.za>