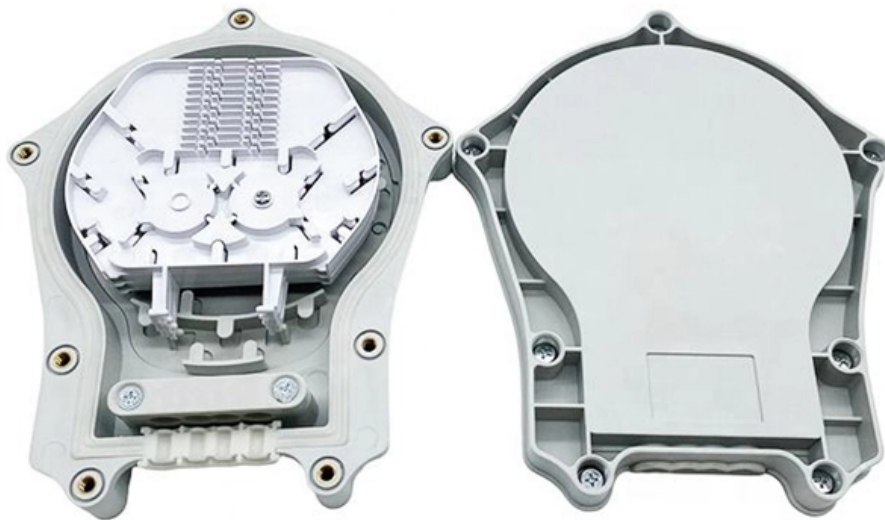




**Adam Tas Corridor Energy**

# **Huawei 10 Gigabit Single-Mode Single-Fiber Optic Module**





## Overview

---

The Huawei Optical Transceiver SFP-10G-LR is a versatile and high-performance 10G SFP+ module. Designed for single-mode fiber, it offers reliable 10km transmission at 1310nm. This product is highly beneficial for data centers and enterprise networks needing robust and long-range connectivity. Vendor compatible 10GBase-LR singlemode 1310nm SFP+ transceiver for 10 Gigabit Ethernet.



## Huawei 10 Gigabit Single-Mode Single-Fiber Optic Module

---

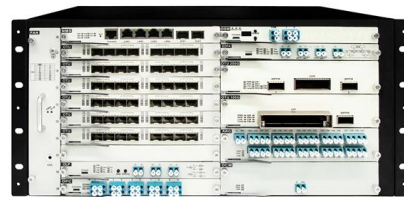


### Fiber Optic Networking Products in Ghana

Jiji .gh 49+ Fiber Optic Networking Products for sale in Ghana From GH? 30 Wi-Fi, LAN & enterprise gear Boost your speed today!

### SFP 10 Gigabit Fiber Module

Supercharge your network speeds with our SFP 10 Gigabit Fiber Module 10GBase-LRM, LC Multimode. Effective up to 220m and designed for high-speed data rates



### Huawei SFP-GE-LX-SM1310 compatible SFP 1G

Compatible 1000Base-LX/LH Singlemode 10km 1310nm SFP Transceiver for Gigabit Ethernet.

### 1.25G SFPs LXSM1310 Gigabit Singlemode 2 Fiber Module for single mode

For long-distance communications, this module



uses 1310nm single-mode fiber to ensure low signal loss, support distance up to 40km, enabling a wide range of fiber optical networks.



## Sistem Kablolar? ve Aksesuar Modelleri ve Fiyatlar?

Sistem Kablolar? ve Aksesuar modelleri farklı marka ve uygun fiyatlarla Pazarama'da! Arad???n?z Sistem Kablolar? ve Aksesuar çe?itlerine ula?mak için hemen t?klay?n.



## Huawei SFP-10G-GE-LX Compatible 10Gb SFP

This high-quality Huawei SFP-10G-GE-LX Compatible 10GBASE-LR SFP+ 1310nm 10km DOM Transceiver. A cost-effective solution that provides high bandwidth



## Huawei SFP-10G-GE-LX Compatible 10Gb SFP

Huawei SFP-10G-GE-LX Compatible 10G SFP+ Module - Single-mode 1310nm Wavelength for up to 10km with Standard Compatability This high-quality Huawei





## Huawei OSX010000 SFP+ 10G Optical Transceiver Module

Huawei OSX010000 SFP+ is a new generation of 10 Gigabit



## Optical Modules for Huawei S Series Switches

Single-mode optical modules are used with single-mode fibers. Single-mode fibers support a wide band and large transmission capacity, and are used for long-distance transmission.

## Huawei SFP-1G-LX-20KM-HU SFP 1000BASE-LX Singlemode

This preselection of the world's best components for optical transceiver modules leads to an above-average service life of all SFP-1G-LX-20KM-HU compatible BlueOptics 1000BASE-LX LC



## Cisco 10GBASE SFP+ Modules Data Sheet

The Cisco 10GBASE SFP+ modules give you a wide variety of 10 Gigabit Ethernet connectivity options for data center, enterprise wiring closet, and



## 10G single-mode OSX010000: a reliable solution for enterprise high

The 10G single-mode optical module OSX010000 is Huawei's 10G single-mode optical module based on optical fiber transmission. It supports long-distance transmission and is suitable for data centers,

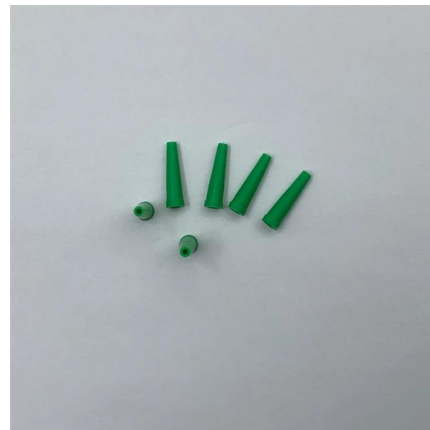


## Intellinet 10 Gigabit Fiber SFP + (LC) Single-Mode

The Intellinet 10 Gigabit Fiber SFP Optical Transceiver Module (model 507479) is fully hot-pluggable, and that allows you to install the module

## Huawei SFP-10G-LR-HU SFP+ 10GBASE-LR Singlemode Transceiver

The SFP-10G-LR-HU 10GBASE-LR LC Duplex SFP+ compatible with Huawei has a receiving function (receiver with 1310nm) and a transmitting function (transmitter with 1310nm) for the transmission of



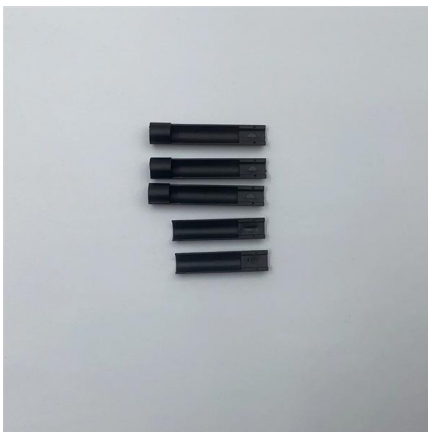
## Huawei OSX010000 compatible SFP+ 10G Singlemode 1310nm 10km

Vendor compatible 10GBase-LR singlemode 1310nm SFP+ transceiver for 10 Gigabit Ethernet. Description This vendor compatible SFP+ transceiver module is suitable for high throughput 10Gbps



### **Flytoplink Fiber Optical Transceiver 1.25G SFP 1550nm 120km Optical**

Flytoplink Fiber Optical Transceiver 1.25G SFP  
1550nm 120km Optical Module Dual Fiber  
Singlemode Compatible with Cisco



### **10GE SFP+ Optical Modules**

Single-fiber bidirectional (BIDI) optical modules must be used in pairs. For example, SFP-10G-BXU1 must be used with SFP-10G-BXD1.

### **Huawei Technical Support**

This document provides technical details about 1Gbps eSFP Optical Modules, including specifications and support information.



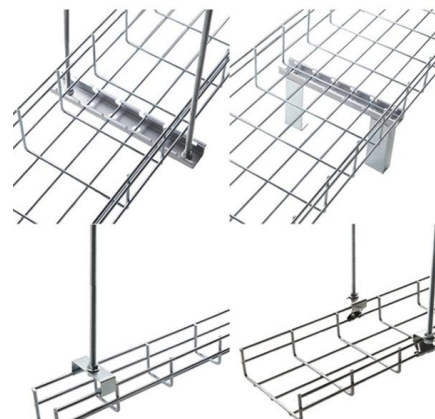
### Singlemode Fiber Optic Transmitters, Receivers, Transceivers

Singlemode Fiber Optic Transmitters, Receivers, Transceivers are available at Mouser Electronics. Mouser offers inventory, pricing, & datasheets for Singlemode Fiber Optic Transmitters, Receivers,



### 10G 1310nm 10km SM SFP+ Huawei Brand New Optical Transceiver

The 10G 1310nm 10km SM SFP+ Huawei optical transceiver is a high-performance, cost-effective solution for 10 Gigabit Ethernet applications over single-mode fiber (SMF).



### Gigabit Ethernet

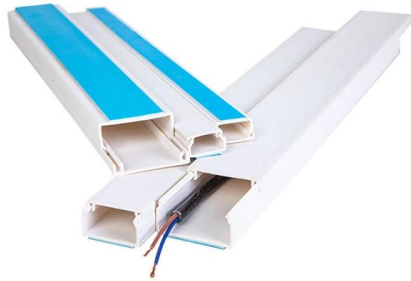
Gigabit Ethernet was the next iteration, increasing the speed to 1000 Mbit/s. The initial standard for Gigabit Ethernet was produced by the IEEE in June 1998 as





## Multi-mode optical fiber

Multi-mode optical fiber is a type of optical fiber mostly used for communication over short distances, such as within a building or on a campus. Multi-mode links can



## Buy in Anvimur this SFP+ Huawei 10Gb Fiber Module,

A 10GE optical module (SFP+) is connected to two LC optical fibers to provide one GE channel. 40 kilometres.

## Huawei SFP-10G-LR 10G SFP+ 1310nm 10km Single

The Huawei Optical Transceiver SFP-10G-LR is a versatile and high-performance



## The Ultimate Guide to SFP Modules (2026): Types,

Confused by SFP vs SFP+? Read the definitive 2026 guide on SFP modules. We explain Single Mode vs Multimode, DDM diagnostics, and how to choose the right



## Amazon : Fiber Optic Network Interface Card

Discover high-performance fiber optic network interface cards for servers and desktops. Find single and dual port SFP+ adapters with reliable connectivity.



## Amazon : Fiber To Ethernet Converter

A Pair of Gigabit Single Mode LC Fiber Media Converter, with 2 Pcs SFP LX Modules, 1.25G/s Fiber to Ethernet Converter, 1000Base-LX to 10/100/1000base-TX, SFP to RJ45, SMF, 1310nm, up to 20km

## 10GE SFP+ Optical Modules

OMXD30000 OSX010000 OSX040N01  
OSXD22N00 SFP-10G-BXD1 SFP-10G-BXU1  
SFP-10G-ER-1310 SFP-10G-ER-SM1270-BIDI  
SFP-10G-ER-SM1330-BIDI SFP-10G-LR-I SFP-10G-  
USR SFP-10G





## 10 Gigabit Ethernet

A Foundry Networks router with 10 Gigabit Ethernet optical interfaces (XFP transceiver). The yellow cables are single-mode duplex fiber optic connections.



## Contact Us

---

For datasheets, pricing, or custom telecom energy solutions, please visit:  
<https://www.koskolong.co.za>