



Adam Tas Corridor Energy

Huawei GPON uplink and downlink symmetrical optical modules





Huawei GPON uplink and downlink symmetrical optical modules

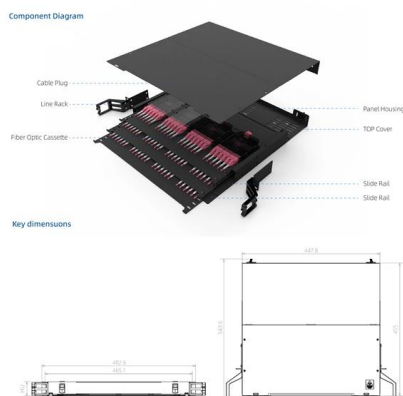
Exploring 10G PON Modules: XG-PON vs XGS-PON vs

Compared to traditional GPON or EPON systems, 10G PON offers greater user access density and more flexible bandwidth allocation. Its biggest



What are the differences between GPON, 10G-PON, XG

Unlike GPON, XG-PON has a symmetrical rate, that is, the downlink rate and uplink rate are the same. This allows users to enjoy more stable and



Huawei GPON GPHF Board 16 PON Ports Interface Card with B+ C

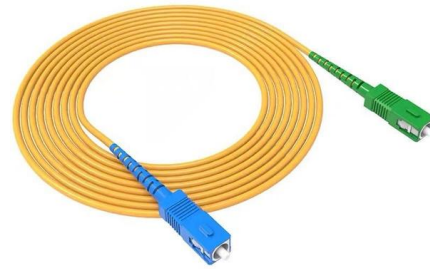
The Huawei SmartAX EA5800 16-port GPON OLT Interface Board, model GPHF, marks a new frontier in high-speed, high-efficiency networking technology. This cutting-edge component is designed to

Huawei CloudEngine S6730-S24X6Q S-series 24 Port

Product Description CloudEngine S6730-S Series Switches Providing 10 GE downlink



ports alongside 40 GE uplink ports, Huawei CloudEngine S6730-S



Dual-Uplink Solution for the Access Side

In the dual-uplink solution for the access side, two uplink optical ports on each access switch are added to an Eth-Trunk. This PEN networking solution is similar to the traditional Eth-Trunk networking, but

Huawei GPON Optical Module

We found that there would be fault PON modules, so we test each board and each PON module optical power, and record the data on the test



Huawei GPON GPHF Board 16 PON Ports Interface Card with B+ C

Whether implemented in small communities or large urban developments, the GPHF stands as a cornerstone of modern optical network deployments, ensuring a robust, future-proof infrastructure for



Huawei MA5620 24 Port Brand New OLT 1xGE (optical)

Huawei MA5620 24 Port Description: Huawei MA5620 24 Port is a multi-dwelling unit (MDU) launched by Huawei Technologies Co, Ltd. And it applies in fibre to the



PON Module Parameters Guide: How to Choose the

Discover key PON module parameters for selecting the best GPON and EPON modules. Understand their impact on network performance and make

EPON OLT module 1.25G PX20+++ 5db 7db 8dBm SFP

EPON OLT PX20+++ is an SFP packaged hot-swappable optical module (compliant with IEEE 802.3ah 1000BASE-PX20+) used to connect optical data communication links. It adopts a single-fiber



Example for Connecting an AP to a GPON Network

A GPON network consists of optical line terminals (OLTs), optical distribution networks (ODNs), and optical network units (ONUs). The OLT is an aggregation device located at the central



Optical Access

Based on PON technology, passive all-optical network access solutions enable access by any media, tailored to enterprises, ISPs, and MSOs.

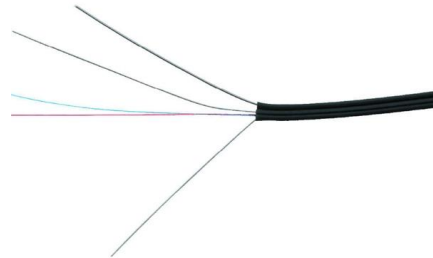


Huawei GPHF High Quality GPON Class C+ C++

Huawei GPHF Huawei GPHF is a 16-port Huawei NG OLT GPON interface card that provides access to GPON from the ONT. The GPHF, with 2.5 Gbps downlink and

Huawei Unveils StarryLink Optical Modules That Deliver

Looking ahead, Huawei aims to collaborate with industry partners to further research and innovate in data center network optical modules, promoting



Huawei GPON SFP B+ C+ C++ Introduction and

Huawei GPON module has 3 types of Class B+, C+ and C++, price is different based on different modules equipped. Advantage of the GPON Optical



(PDF) Symmetric uplink and downlink transmissions for

The second technique is a transmission priority scheme that provides symmetric uplink and downlink transmissions for wireless users (WU) and their



Huawei GPON SFP Optical Modules , PDF , Computer Networking

This document summarizes the specifications of three Huawei GPON optical modules. The modules operate at transmission wavelengths of 1490 nm and reception wavelengths of 1310 nm. They have

Introduction To Data Transmission Methods In PON

This wavelength allocation is specified in industry standards to deploy lower-cost optical components on the multi-point ONU side, reducing overall PON



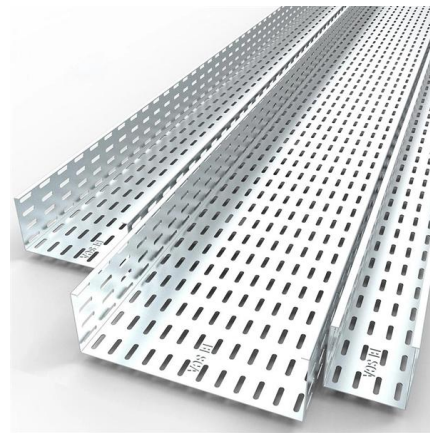


PON Interface Configuration Commands

Usage Guidelines Usage Scenario The display pon-statistic interface pon command displays traffic statistics on a PON interface, including the number of frames received, number of bytes received,

fttx onu epon olt

Huawei EPHF 901 902 16-port EPON OLT Service Card Product Overview The Huawei EPHF Service Board is a 16-port EPON OLT interface board designed for Huawei MA5800 series platforms. This



GPON Optical Modules

Understanding Optical Modules Understanding Copper Modules FE SFP/eSFP Optical Modules GE eSFP Optical Modules GE-CWDM eSFP Optical Modules GE-DWDM eSFP Optical



Huawei GPON & 10GPON ONT/ONU & Huawei OLT

Telecomate offers a wide range of Huawei GPON/10GPON ONT/ONU and Huawei OLT products, services and for companies of all sizes. Free network

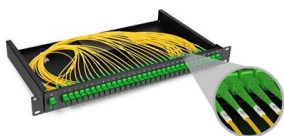


GPON Optical Modules

H87MMA5671A2 Translation Favorite Download
Update Date:2024-10-22 Document
ID:EDOC1000063015 Views:426778
Downloads:14666 Average rating:4.4Points

Introduction And Application Of EPON And GPON

The downlink rate of the asymmetric mode is 10Gbit/s, the uplink rate is 1Gbit/s, and the uplink and downlink rates of the symmetric mode are both



GPON Optical Modules

Ensure that the optical power is not overloaded. Otherwise, the optical module may be burnt. In practice, the maximum upstream service bandwidth is 1.1 Gbit/s and downlink service bandwidth is 2.3 Gbit/s.



Huawei Enterprise Transmission Access: 9 New Models of OptiXstar

XGS-PON: 10G GPON Symmetrical mode (Downlink rate: 9.953Gbit/s, Uplink rate: 9.953Gbit/s). This mean Huawei OptiXstar new ONU can provide 10G GPON access and faster



Huawei OptiXstar E853E Gateway , Huawei Enterprise

Huawei OptiXstar E853E is a edge optical gateway ONU designed for small- and medium-sized campuses. It supports XGS-PON in the upstream direction to 10 Gbps access, supports 2 GPON

Understanding GPON ONU: A Comprehensive Guide -

GPON ONU is a terminal device that converts optical signals into electrical signals, providing high-speed broadband connections with multiple service interfaces.



GPON OLT Basics and Beyond: A Comprehensive

Learn how GPON OLT works, its features, and how to choose the right device for efficient fiber network deployment.



Contact Us

For datasheets, pricing, or custom telecom energy solutions, please visit:
<https://www.koskolong.co.za>