



Adam Tas Corridor Energy

Huawei ONU optical module configuration





Huawei ONU optical module configuration



01-20 PON INTERFACE CONFIGURATION

When the router is connected to an EPON interface of an OLT, configure the router to automatically determine the working mode according to the received optical signal, or configure the PON interface

Huawei ONT Products Overview (OLT vs. ONU vs.

ONT products are only a part of the family. Huawei ONT products series is the EchoLife Series. Huawei ONT Overview User-side Optical Network



Understanding ONU Configuration for WiFi Network Setup

Essential ONU Configuration Understanding ONU Configuration The role of the Optical Network Unit (ONU) in fiber optic networks is to bridge the gap

Huawei OptiXstar P613E-E ONU

Huawei OptiXstar P613E-E is an Optical Network Unit (ONU) designed for enterprise campus and video backhaul scenarios. It features eight GE



ports that support



Huawei H802X2CS MA5600T 10GE/GE Uplink Board

Buy Huawei MA5680T MA5683T 2-port 10GE/GE uplink board H802X2CS, configure H802X2CS with 10km 40km 80km SFP+ optical module, download H802X2CS

Buyer Guide: A Configuration Tool of Huawei OptiX OLT

Do you know how to choose a Huawei OLT or ONU? Maybe you will answer that ask the sales team of Huawei directly to configure. However,



Troubleshooting Optical Module Issues

Troubleshooting Optical Module Issues Symptom
An optical port cannot go Up. The optical module cannot be properly identified and optical module information cannot be obtained. After



Installation and Configuration Guide for the Huawei HS8546X6 Optical

With the proper installation and configuration, the Huawei HS8546X6 ONU can provide users with a high-speed connection that is optimized for their particular needs.

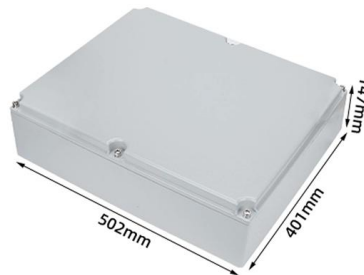


PON Interface Configuration Commands

Usage Guidelines The display pon-transceiver interface pon command output includes the optical wavelength, identifier, transmission distance, version, bias current, voltage, and various alarm

Pakistan ISP Marketplace & Networking Solutions Hub By LCN

#onu #ont#xpon #epon #huawei#ONU
#today#ONT #GPON#Chinese factories accept large quantities of orders for 8310M. Can use DBC and Huawei software, R13 R15 R17 XPON and



GPON OLT Stick, SFP Optical Module for POL Fiber

Simplify your fiber network with our GPON OLT Stick. A cost-effective, plug-and-play solution for building a high-speed POL network with your existing switch.



Huawei ONU Configuration Guide , PDF , Network

Setup Huawei ONU.doc - Free download as Word Doc (.doc), PDF File (.pdf), Text File (.txt) or read online for free. The document outlines the configuration of an



Displaying Optical Module Information

This document describes the principles and configurations of the Device Management features, and provides configuration examples of these features.

Huawei S6720-LI Series Switch Optical Module Solutions

As a professional optical module manufacturer, Walsun can provide optical modules compatible with various brand switches, including Huawei. For the optical module configuration of





Configuring Attributes for Ethernet Optical Interfaces

Pre-configuring a Transmission Medium Type for an Optical Interface Context Some functions can be configured on an optical interface only after the interface connects to a transmission medium (such

How to add an ONU to an OLT?

As we know, services can be configured for an optical network unit (ONU) only after the ONU is added to an optical line terminal (OLT). For example, adding Huawei

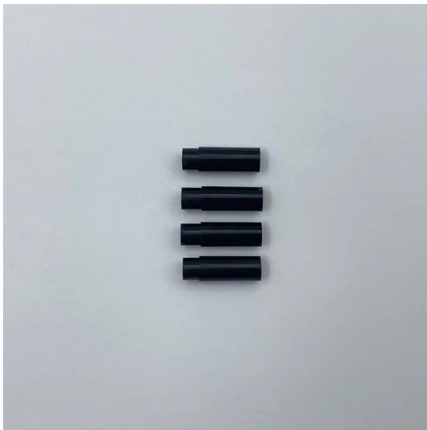
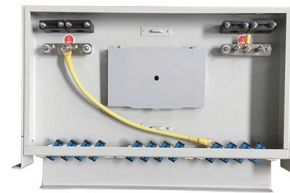


ONU

ONU The ONU series products provide various interfaces, such as DSL, LAN, POTS, and Wi-Fi, to meet FTTO, FTTB/C, and FTTM requirements. The products

Huawei Mate 90 Pro Max Is Bringing Back 10x Optical Zoom -- and

Huawei Mate 90 Pro Max leaks point to a dual telephoto setup with 10x optical zoom and a possible 1-inch main sensor. October 2026 China launch expected.

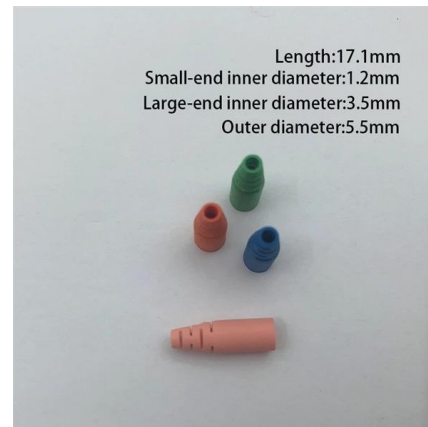


Huawei ONU Configuration Guide , PDF , Network

The document outlines the configuration of an OLT device to add a new SN ONU and provision services. It includes: 1) Creating an ONT service profile and line

Huawei Flex-PON Solution XG (S)

Replace the GPON optical module with the XG-PON optical module. Add the XG-PON ONU or replace the GPON ONU with the XG-PON ONT.



Huawei Enterprise Product & Service Support

Huawei Online Support Center for Enterprise provides services such as downloading of technical documents & software patch, requesting and consulting of online service, training and certification,



Huawei S6720S-26Q-EI-24S-AC: High-Density 10GbE and 40GbE

The Huawei S6720S-26Q-EI-24S-AC is a fixed-configuration, high-performance Ethernet switch categorized under Huawei's Enhanced (EI) series. At its core, it is a Layer 3 (L3) switch that

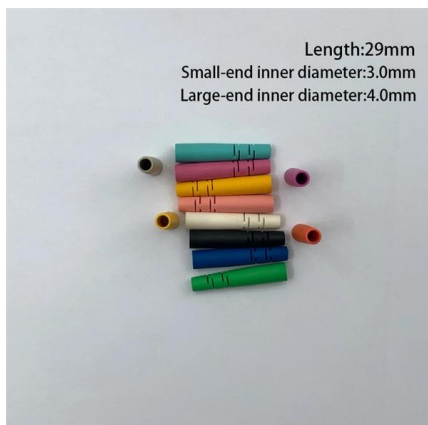


What Can I Do If a Message Is Displayed Indicating that an Optical

This field indicates whether the rate of the optical module installed on the port matches the port rate. For example, if a non-XGE optical module is installed on an XGE port, the rate of the optical module

01-18 PON INTERFACE CONFIGURATION

When the device is connected to a GPON interface of an OLT, configure the device to automatically determine the working mode according to the received optical signal, or configure the PON interface



WLAN Typical Configuration Examples (V200)

A GPON optical module is installed on an AP, so the AP is regarded as an ONU. The ONU is connected to the OLT through the optical splitter and optical fiber, and the OLT terminates



Contact Us

For datasheets, pricing, or custom telecom energy solutions, please visit:
<https://www.koskolong.co.za>