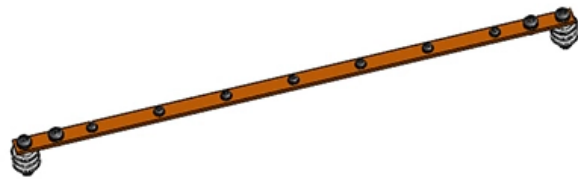




**Adam Tas Corridor Energy**

# **Huawei Switch Optical Port IP**





## Huawei Switch Optical Port IP

---



### How to Enable Ports in Huawei Switch? Could Open Ports Unlock

Configuring ports on a Huawei switch is a fundamental yet critical task for network administrators. Whether you're setting up a new network segment or troubleshooting connectivity

### Empowering Enterprise Connectivity: An In-Depth Look at the Huawei

Discover the details of Empowering Enterprise Connectivity: An In-Depth Look at the Huawei S5735-L48P4X-A Switch at LonRise Equipment Co. Ltd., a leading supplier in China for Optical



### HUAWEI ECHOLIFE HG8245Q QUICK START

View and Download Huawei EchoLife HG8245Q quick start manual online. GPON Terminal. EchoLife HG8245Q network hardware pdf manual download.

### 9 Query Commands for Huawei Switches

With its excellent performance and rich functions, Huawei switches have become one of



the preferred devices for many enterprise networks. This

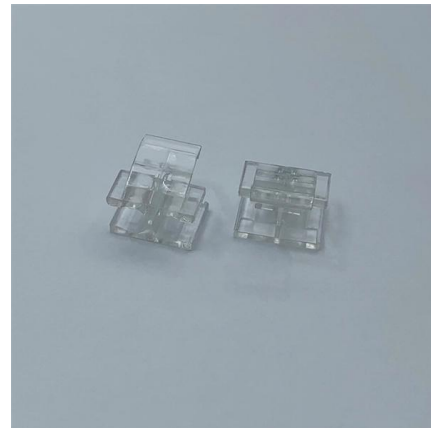


### **Huawei 8 port switches**

Discover Huawei 8x 8-port switches with high-speed connectivity and advanced network management for seamless business performance.

### **Huawei CloudEngine S5732-H Series Multi-GE Switches Brochure**

In addition, Multi-GE ports support 60 W PoE++, which provides high-power power for powered devices (PDs) such as APs and IP cameras. The S5732-H series switches provide industry-leading Multi-GE



### **Light Reading**

Light Reading is the leading source of news analysis for communications industry professionals.



## Huawei S5735-L24P4X-A Switch 24xGE 4x10G SFP

Huawei S5735-L24P4X-A delivers 24xGE access, 4x10G SFP+ uplinks and PoE+ for APs/IP phones. Simplify campus access, ensure stable power and easy



## Huawei Switches Viewing Optical Port Receiving and Sending

Use the command display transceiver to view the optical module information of all optical ports, and use the command display transceiver interface interface-type interface-number to view the

## Huawei S110-16LP2SR PoE Switch , 16 Port Gigabit

Huawei S110-16LP2SR PoE switch with 16 Gigabit ports, 124W PoE budget, SFP uplinks, and reliable performance for SME network deployments.



## Basic CLI Commands on Huawei Switch

This text is a guide detailing Basic Command Line Interface (CLI) Commands on Huawei brand switches. It provides step-by-step instructions for users to perform



## Huawei S3700, S5700 and S6700 Firmware & Software Download- Huawei

What's New CloudEngine S3700, S5700, and S6700 Series Switches What's New (V600) Documentation Bookshelf HUAWEI S Series Switches After-Sales Documentation Bookshelf



## Troubleshooting S Series Switch Port and Interface Problems

When connecting two devices, check whether optical modules match optical interfaces, whether optical modules match fiber models, and whether optical modules and fibers are connected correctly.



## Huawei CloudEngine S5732-H Series Hybrid Optical-Electrical Switches

Huawei CloudEngine S5732-H Series Hybrid Optical-Electrical Switches Datasheet  
CloudEngine S5732-H series hybrid optical-electrical switches are brand-new 10GE access switch that provides 24-port





## Huawei S3700, S5700 and S6700 Switches Support Guide, Manuals

S3700& S5700& S6700 Series S5720S-28P-PWR-LI-AC: Access product manuals, HedEx documents, product images and visio stencils.

## Huawei S6730 Switch - 10GE Aggregation & Core

Explore Huawei S6730 Switch: 24-48 10GE access, 40/100GE uplinks, VXLAN/BGP-EVPN, built-in WLAN AC, SEP/ERPS resilience, telemetry,

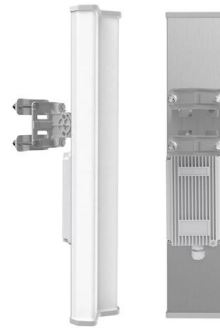


## What Is a Switch? What Is It Used for?

What Is a Switch? A switch enables network communication for connected IT devices. Switches fall into different categories from different perspectives, including Ethernet switches, Layer

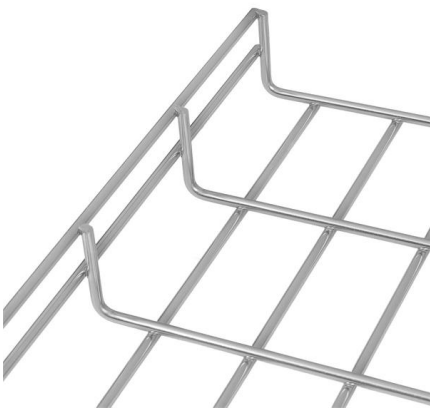
## Configuring Attributes for an Optical Interface

Both the local and remote interfaces do not need to have optical modules installed. The 40GE interface can be connected to four 10GE interfaces on the remote device using a 1-to-4 40GE optical module



### Optical Module Solutions for Huawei S5700/S5720 Series Switches

This article summarizes several solutions for using optical modules with switches and common problems encountered during usage, along with specific solutions.



### Huawei S5720-32P-EI-AC Switch 24xGE RJ45 8xGE

Huawei S5720-32P-EI-AC Overview Huawei S5720-32P-EI-AC supports twenty-four Ethernet 10/100/1000 ports and eight Gig SFP. There are two QSFP+ stack



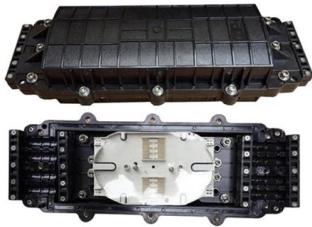
### Huawei S6730-H48X6C Switch 48x10GE SFP+ 6x40GE

Huawei S6730-H48X6C CloudEngine switch with 48x10GE SFP+ and 6x40GE QSFP+ uplinks for high-density aggregation and campus core. Inquire price now.



## Huawei S3700, S5700 and S6700 Switches Support Guide, Manuals

S3700& S5700& S6700 Series CloudEngine S5735-L24T4X-A: Access product manuals, HedEx documents, product images and visio stencils.



## Huawei S5731-S48P4X 48x GE PoE+ 4x 10G SFP

Huawei S5731-S48P4X CloudEngine switch with 48x GE PoE+ and 4x 10G SFP+ uplinks for campus and enterprise access. View key features and specifications now.

## Optical computing interconnect technology landscape 2026

Optical computing interconnect patents and research 2026: silicon photonics, co-packaged optics, FSO, and fiber switching -- mapped across hyperscalers, chipmakers, and academia.



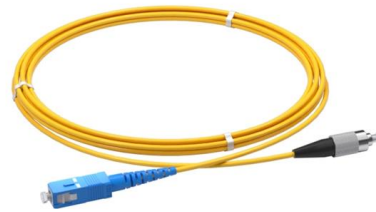
## Optical Module Solutions for Huawei S5700/S5720 Series Switches

When using switches, we may encounter many confusions, such as what types of optical modules are needed for different models of Huawei switches, and how to resolve issues encountered



## How To Read Optical Module Information On Huawei Switches

The following uses the Moduletek SFP-10G-LR module connected to a Huawei S6700 switch as an example to introduce how to read information of the connected optical module on a Huawei switch.



## How to Assign an IP Address in a Huawei Switch? Why

Properly configured Huawei switches act as traffic directors, ensuring data flows efficiently between segments. For instance, assigning a unique IP to a

## Interface Management FAQ

After the switch has the V100R006SPH005 patch installed and a GE optical module connects to a 10GE optical port on the S6700, you can run the negotiation auto command to switch the port status to





## Contact Us

---

For datasheets, pricing, or custom telecom energy solutions, please visit:  
<https://www.koskolong.co.za>