



Adam Tas Corridor Energy

Huawei core switch VLAN acquisition





Overview

For example: Replace Gigabitethernet 0/0/1 with the relevant port and adjust VLAN settings as needed. In this scenario, IP addresses of the interfaces connecting the core switch to the BRASs and firewalls and OSPF need to be configured on the core switch, so as to implement connectivity between the user network to egress network through the core switch. Two switches are deployed in different locations (for example, on different floors of a building). Configuring a Huawei switch to assign an IP address to VLAN 1 and binding multiple ports to it can seem challenging, but this step-by-step guide simplifies the process. VLANs can be assigned based on interfaces, MAC addresses, IP subnets, protocols, and policies (MAC addresses, IP addresses, and interfaces). Scan the QR code below to download the Huawei eKit app from the app store supported by your phone. If you select All Products instead of SME Network in the upper left corner, the system. Whether you're segregating departments in a corporate office or isolating IoT devices in a smart factory, VLAN configuration isn't.



Huawei core switch VLAN acquisition

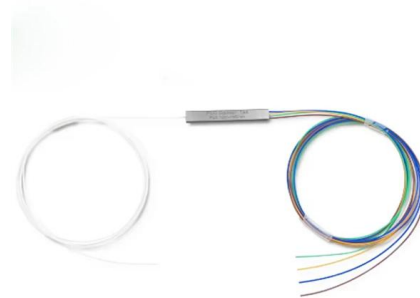


How to add extra vlan on huawei switch

Hi there, just want to know how to add a vlan to my existing core switch, also i do have a uplink port and how do i add this vlan to this port with other vlan already configured

Configuring Inter-VLAN Communication

S1720, S2700, S5700, and S6720 V200R011C10 Configuration Guide - Ethernet Switching This document describes the configuration of Ethernet services, including configuring link aggregation,



Step-by-Step Guide to Configure VLAN and Bind Ports

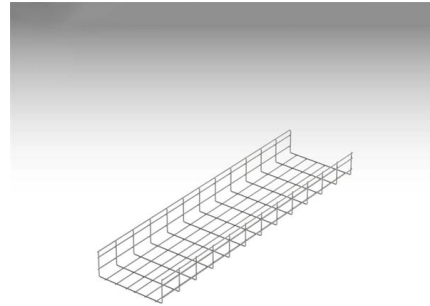
Configuring a Huawei switch to assign an IP address to VLAN 1 and binding multiple ports to it can seem challenging, but this step-by-step guide

S7700 V200R023C00 Configuration Guide

S7700 V200R023C00 Configuration Guide - Ethernet Switching This document describes the



configuration of Ethernet services, including configuring MAC address table, link aggregation,



Grid Cable for marine and offshore applications

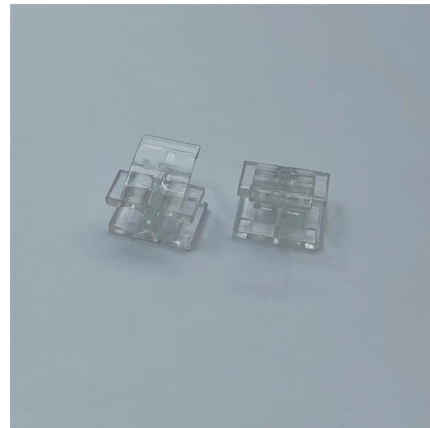


Network Switches , Huawei Enterprise

Huawei Ethernet Switches Turbocharge your enterprise network with high-performance, high-availability for resilient services and simplified management.

VLAN Mapping Configuration Commands

Precautions To make VLAN mapping take effect in the inbound direction only, configure the port vlan-mapping ingress and port vlan-mapping vlan map-vlan commands in sequence. To delete the VLAN



Configure VLAN on Huawei Switch: Basic Step or

Yet, many admins fall into the trap of treating VLANs as checkbox tasks, using default settings that leave networks vulnerable to broadcast storms,



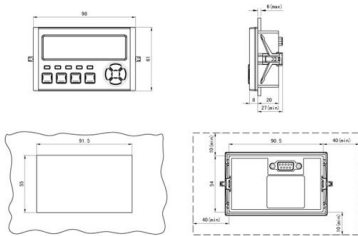
3-HQ Configuration, Huawei VLANif, VLANs, VRRP on Core Switch

3-HQ Configuration, Huawei VLANif, VLANs, VRRP on Core Switch, Default Route Mahmoud Miaari
14.7K subscribers Subscribe



Configuring the Core Switch

Configure interfaces for interconnecting the core switch with firewalls. # Create interconnection VLANs on the core switch and add interfaces to the interconnection VLANs.



Assigning VLANs

S300, S500, S2700, S5700 and S6700
V200R024C00 Configuration Guide - Ethernet Switching This document describes the configuration of Ethernet services, including configuring MAC address table,



3-HQ Configuration, Huawei VLANif, VLANs, VRRP on Core Switch

Audio tracks for some languages were automatically generated. Learn more.



Huawei Core Switch: Network's Beating Heart? Can Centralized

Every enterprise network has a silent dictator--the Huawei core switch. Buried in server rooms or data centers, this unassuming device governs traffic flow between departments, cloud platforms, and



Wi-Fi-based Deployment Cases -Gateway + Core Switch + Access

With the wizard-based network configuration function, the interconnection subnet, interconnection VLAN, and route between the core switch and the gateway are automatically configured, greatly improving

01-04 VLAN CONFIGURATION

Assign VLANs on Switch_1 and Switch_2, configure Switch_1 and Switch_2 to transparently transmit VLAN packets to the Layer 3 switch, and configure a VLANIF interface for each VLAN on the Layer 3



89P 36P 16P

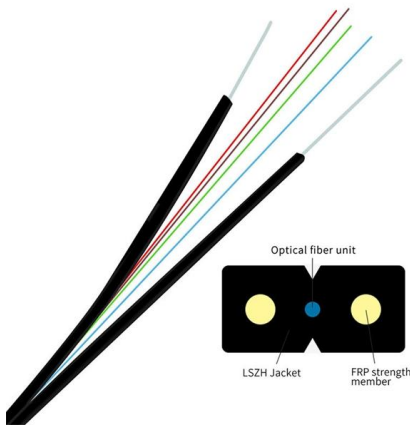


Link Aggregation Configuration

Switch A and Switch B can provide higher link bandwidth to implement inter-VLAN communication. Data transmission and link reliability need to be ensured. Figure 3-75 Networking for configuring link

01-03 VLAN CONFIGURATION

Assign VLANs on Switch_1 and Switch_2, configure Switch_1 and Switch_2 to transparently transmit VLAN packets to Router, and configure a VLANIF interface for each VLAN on Router to allow

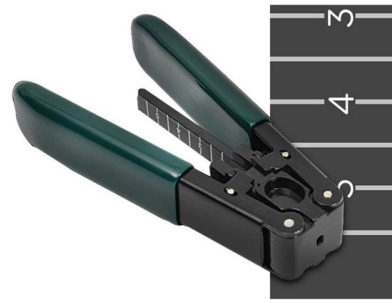


Configuring the Control VLAN

S1720, S2700, S5700, and S6720 V200R011C10 Configuration Guide - Ethernet Switching This document describes the configuration of Ethernet services, including configuring link aggregation,

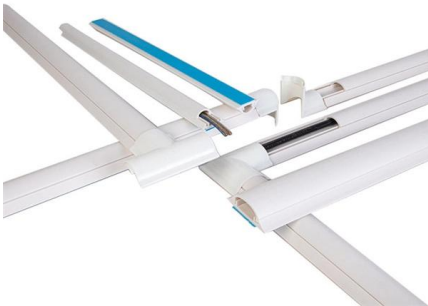
What Is a VLAN?

This chapter defines Virtual Local Area Networks (VLANs), introduces related concepts, and provides configuration examples. VLAN is a basic feature of Huawei data communications



Configuring Aggregation and Access Switches to Be Managed by the

Configure the management VLAN auto-negotiation function on the core switch acting as the root device. Create downlink Eth-Trunk interfaces on the core switch for connecting to



Inter-VLAN Communication

Similar to intra-VLAN communication described in Intra-VLAN Communication, inter-VLAN communication goes through three phases: packet transmission from the source host, Ethernet



Link Aggregation Configuration

S1720, S2700, S5700, and S6720 V200R011C10 Configuration Guide - Ethernet Switching This document describes the configuration of Ethernet services, including configuring link aggregation,



V600 Core Switch Functioning as the Native WAC

For details about how to configure management VLAN connectivity between APs and the core switch, as well as how to configure the gateway interface of the management subnet on the core switch, see



Huawei Technical Support

This webpage provides cases for deploying networks using gateway, core switch, and access switch to enhance connectivity and efficiency.



Typical VLAN Configuration

You can configure interface-based VLAN assignment on the switch so that the switch adds interfaces connected to users using the same service to the same VLAN. Users in different VLANs cannot



Huawei Enterprise Support Community

We're sorry but web site doesn't work properly without JavaScript enabled. Please enable it to continue. Loading

Adding Interfaces to a VLAN

Applicable Environment You can configure VLANs based on interfaces. You can group the interfaces that process the same service into a VLAN. In this manner, the interfaces that process different



Basic CLI Commands on Huawei Switch

This text is a guide detailing Basic Command Line Interface (CLI) Commands on Huawei brand switches. It provides step-by-step instructions for users to perform



Configure VLANs on Huawei Switches Like a Pro in 10 Minutes!

In this Huawei VLAN Configuration lesson, you will learn how to configure Virtual LANs on Huawei switches. After this lesson, you will be familiar with VLAN commands of Huawei switches.



Configure VLAN on Huawei Switch: Basic Step or

Configuring VLANs on a Huawei switch isn't just about typing commands--it's about crafting a network that's resilient, agile, and secure. While

Contact Us

For datasheets, pricing, or custom telecom energy solutions, please visit:
<https://www.koskolong.co.za>