



Adam Tas Corridor Energy

Huawei core switch cannot obtain IP address





Overview

When the switch functions as the DHCP server, the DHCP client cannot obtain IP addresses. A DHCP server processes requests for address allocation, address renewal, and address release from DHCP clients or DHCP relay agents, and allocates IP addresses and other network configuration parameters to DHCP clients. Configuring an IP address on a Huawei switch isn't just a technical checkbox—it's the foundation of a reliable, responsive network. Whether you're setting up a new switch or troubleshooting connectivity gaps, getting this step right ensures seamless communication between devices, servers. A customer has an ISP supplied Huawei router (connected to VDSL), I can plug my laptop into a spare gigabit switch port on the router and obtain an IP address BUT if I plug in a 24 port Ubiquiti Unifi switch into the same port, the switch will not get an IP address nor have any connectivity even if.



Huawei core switch cannot obtain IP address



Unable to access an IP address when connecting to a Wi-Fi network

Learn about 'Unable to access an IP address when connecting to a Wi-Fi network'. Find all usage guide, troubleshooting tips and resources for your HUAWEI product.

Case Study: A Client Cannot Obtain an IP Address Through a DHCP

This section provides a detailed procedure for troubleshooting the fault that a DHCP client fails to obtain an IP address from a DHCP server.



Huawei Campus Switch Knowledge Base & FAQ-Huawei

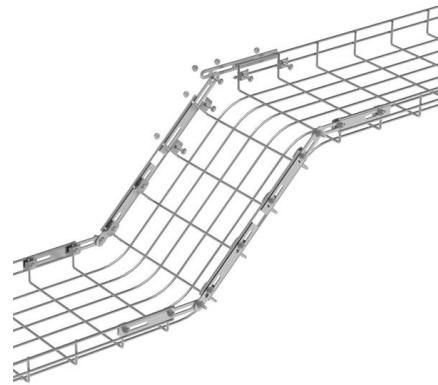
Listings 0-20 (out of 1768) Here are the troubleshooting cases and FAQs for Huawei Campus Switch products. Get your solutions if you have met some problems.

FAQ-What Measures Should Be Taken When an AP Fails to Obtain an IP

Perform the following steps to locate the fault: 1,



Check whether the AP is configured to obtain an IP address using DHCP. 2, Check whether the Layer 2 link between the AP and DHCP

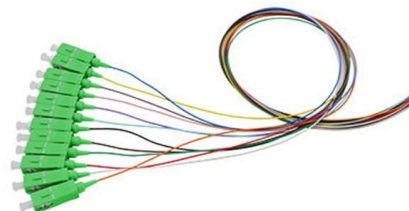


How to Assign an IP Address in a Huawei Switch? Why

Mastering IP address assignment on a Huawei switch isn't about memorizing commands--it's about understanding how this single task weaves

DHCP Client Cannot Obtain IP Addresses When

If the server assigns IP addresses to clients from the global address pool on the interface, re-create a global address pool where the network segment can be connected to the



Unable to access the Internet when my router is using a static IP address

The static IP address must be included in the IP address range of the LAN served by the upper-layer gateway. You can consult the network administrator to obtain the upper-layer LAN IP address, or



Troubleshooting: IP Address Obtaining Failure

Huawei S Series Campus Switches
Troubleshooting Guide (V100 and V200)
Troubleshooting: IP Address Obtaining Failure
About This Chapter This chapter describes the troubleshooting methods



No IP address obtained from Huawei router but OK from connected

As Charles suggests, it is likely to be due to managed switch/router configuration. You will need to make sure no special config such as vlans are in use on the Netgear / Huawei. If they are

01-01 IP ADDRESS CONFIGURATION

After performing an AND operation on the IP address and the subnet mask, you can obtain the network address. The network addresses of the four subnets are shown in Figure 1-5.



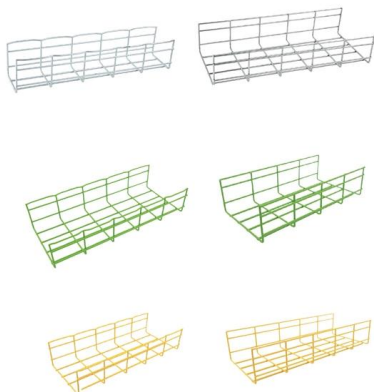
Management Interfaces and Management IP Addresses of S Series Switches

To manage a switch, you need to use its management interface and management IP address. This document describes the management interfaces supported by switches and how to configure



Typical DHCP Configuration

Compared with an interface address pool, the global address pool can be applied to large networks. The DHCP server function based on the global address pool should be configured on a core device, or an



5 Ways to Fix "Failed to Obtain IP Address"

Without a valid IP address, a device cannot communicate on the network, hindering your ability to access the internet or share data with connected devices. But fear not; there are multiple

Users Cannot Obtain IP Addresses When the Device Functions as a

Troubleshooting Guidelines for the Faults Occurred When a Device Functions as a DHCP Server
Troubleshooting Cases for the Faults Occurred When the Device Functions as a DHCP





The PC Fails to Obtain the IP Address Allocated by the DHCP Server

Convergence switch--DHCP server--OLT--n*MxU
Connect the OLT to multiple MxUs and a firewall, start the DHCP server, use NAT, and connect to the convergence switch. The

Case Study: A PPPoX/IPoX Client Cannot Obtain an IP Address (the HUAWEI)

This section describes the troubleshooting flowchart and provides a step-by-step troubleshooting procedure for the fault that a PPPoX/IPoX client cannot obtain an IP address when the HUAWEI

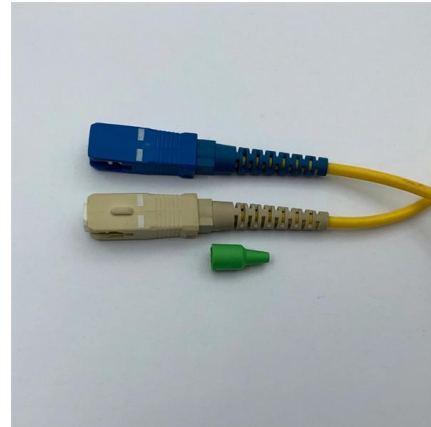


Troubleshooting Cases for DHCP Server

As a result, the first five connected PCs can obtain IP addresses, but the sixth PC cannot obtain an IP address. Run the display ip pool command on the DHCP server to check address pool information of

forum.huawei

We're sorry but web site doesn't work properly without JavaScript enabled. Please enable it to continue. Loading



01-01 IP ADDRESS CONFIGURATION

Configure the IP address or subnet mask correctly. The IP address must be a Class A, Class B, or Class C IP address. The subnet mask must match the IP address.

How to Fix Failed to Obtain IP Address? Here Are 5

To sum up, in order to fix the "failed to obtain IP address" error, this post has shown 5 reliable solutions. If you come across the same trouble, try



Users Cannot Obtain IP Addresses When the Device Functions as a

Check whether the link between the client and server is normal. Check the physical interface and VLANIF interface. If the physical interface is up but the number of error packets keeps





Configuring a Management IP Address

Huawei S Series Campus Switches
Troubleshooting Guide (V100 and V200)
Configuring a Management IP Address A management IP address can be configured on an Ethernet management port or a



Case Study: A Client Cannot Obtain an IP Address Through a DHCP

Troubleshooting Flowchart Figure 12-3 shows the troubleshooting flowchart. Figure 12-3 Troubleshooting flowchart for the failure in obtaining an IP address through a DHCP relay agent

Network Admin's Must-Know: How to Change IP Address on Huawei Switch

Every Huawei switch serves as the backbone of enterprise networks, yet 43% of configuration errors stem from improper IP address management. Whether you're troubleshooting connectivity issues or



A Device Functioning as a DHCP Client Cannot Obtain an IP Address

If the client still cannot obtain an IP address, collect information and rectify the fault according to typical cases. If the fault persists, contact technical support personnel. For details about



Failed to obtain IP address: fixes & prevention tips

IP configuration failure occurs when your device fails to acquire an IP address. The causes range from outdated software to misconfigured network

02

High Quality Material

High hardness to resist external impact. Good Shaping Performance. Good Look and Anti-rust.



Huawei Switch Configuration Guide

The document provides configuration instructions and commands for basic switch configuration using Huawei switches. It covers topics such as changing the

Contact Us

For datasheets, pricing, or custom telecom energy solutions, please visit:
<https://www.koskolong.co.za>