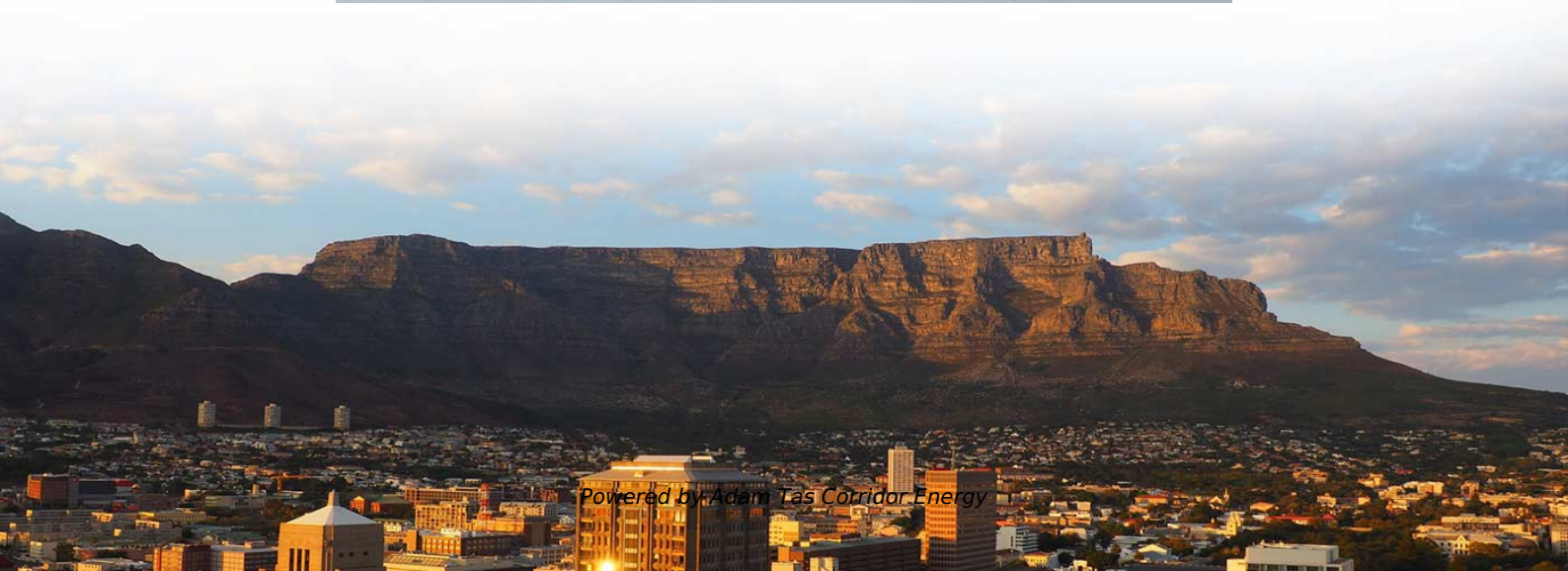




**Adam Tas Corridor Energy**

# **Huawei optical module status abnormal**





## Overview

---

If the fault is caused by incorrect configuration or networking environment, change the configuration or networking environment. If it is not a Huawei-certified optical module, replace it with a Huawei-certified optical module. Use an optical power meter to check whether the transmit optical power of the optical module is normal.



## Huawei optical module status abnormal

---



### How To Check If Interconnected Optical Ports Cannot

The optical module cannot be installed in an optical interface because the optical module structure is non-standard. The structure and size of some non-certified

### Huawei enterprise switches

Optical-module data bus problem, cause the device to a data bus abnormality. Some non-certified optical module problem in the design of the data bus, when using such an optical module, will lead to



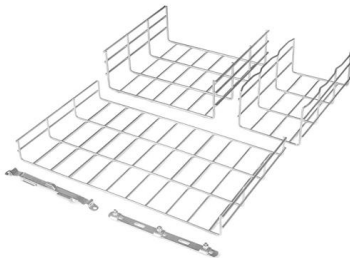
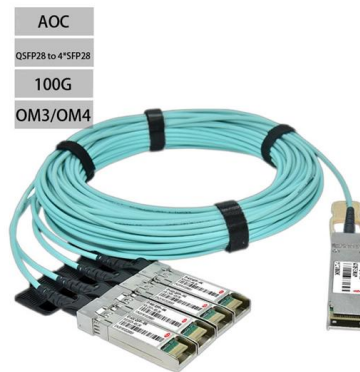
### Troubleshooting Guidelines for Optical Modules

If the transmit optical power is abnormal, replace the optical module. Remove and reinstall the optical module. If the fault persists, replace the optical module with a normal one of the same type to check

### ALM-135462942 The optical module is invalid 136203



An unsupported optical module is installed in the optical interface. For example, an XGE optical module is installed in a GE optical interface; a 100GE optical module is installed in a 40GE



## Checking the Optical Fiber or Link

Certain optical modules work with different types of optical fibers to achieve different transmission distances. In practice, you must select the optical fiber based on the required transmission distance.

## Troubleshooting Guidelines for Interfaces

Ethernet interfaces are physical interfaces provided for operation and configuration. They are mainly used to receive and send data. Ethernet interface faults typically include interface physically down,



## OLT Fault

This page provides troubleshooting steps for resolving OLT faults that prevent GPON ONUs from going online.



## **ALM-327680022 Indicates that optical module power abnormal**

Check whether the interface status and data forwarding are normal. If so, run the transceiver diagnosis threshold rx-power command to change the receive power alarm threshold of



## **Optical Module Troubleshooting**

If there is a Huawei logo on the label, the optical module has been certified for Huawei data center switches. If not, send the model of the optical module to technical support personnel.

## **Troubleshooting for Optical Modules on Huawei Switch**

Check whether the optical module is Huawei-certified. If it is not certified by Huawei, replace it with a Huawei certified one. Remove and reinstall the optical module.



## **Poor OLT's Upper-Layer Network Quality**

Procedure Check whether the optical module installed in the uplink port on the OLT is functional. Check whether the uplink port is functional. An OLT equipped with a



## How to Detect Abnormal Optical Module When the Power cannot Be

The optical channel of NE80E shows that NE80E receives the light from NE40E only, while the interface of NE40E is Down. The receiving of the optical module is abnormal or the tail fiber fails.



## Displaying Optical Module Information

When certifying an optical module, Huawei comprehensively verifies the functions of the optical module to ensure the optical module quality. The functions include the installation and removal, transmit and

## Troubleshooting Optical Module Issues

Check whether the transmit optical power and receive optical power of the optical module are within the normal range. If the transmit optical power is beyond the normal range, replace the





## port is disconnected due to optical module faulty

As per checked the log, it was found that the host port was disconnected, This alarm indicates the port and switch has been disconnected. Hence, we would advise you to perform cross

## Displaying Optical Module Information

The device data bus is abnormal because of the data bus defects of the non-Huawei-certified optical module. Some non-Huawei-certified optical modules have data bus design defects.



## Troubleshooting for Optical Modules on Huawei Switch

Troubleshooting for Optical Modules on Huawei Switch Many friends feedback that one problems occurred when using optical modules on switches, now we are

## OLT's Upper-Layer Network Is Faulty

The value of the Optic Status parameter specifies the optical module status. absence: indicates that the optical module is not securely installed. abnormal:



## Typical Troubleshooting Cases of Optical Module

Check whether the information is consistent with the optical module specifications provided in the product documentation. (For details about the commands for querying port information, see the

## Optical Interface Interconnection Is Abnormal on CE Switches

CloudEngine 16800, 12800, 9800, 8800, 7800, 6800, and 5800 Series Switches Troubleshooting Guide (V100 and V200) Optical Interface Interconnection Is Abnormal on CE



## How To Read Optical Module Information On Huawei Switches

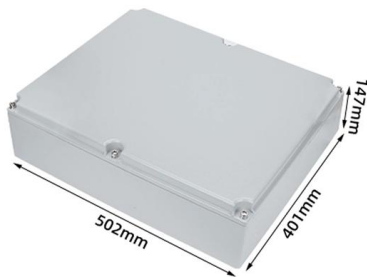
Optical modules are widely used in switches, network interface cards (NICs), routers, and other communication devices. During use, reading optical module information helps understand its real





## HUAWEI SMARTLOGGER3000 USER MANUAL Pdf

View and Download Huawei SmartLogger3000 user manual online. SmartLogger3000 network hardware pdf manual download. Also for:

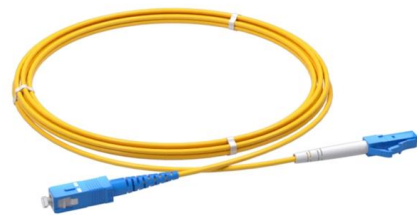


### Typical Troubleshooting Cases of Optical Module

If possible, remove and reinstall the optical modules to check whether the fault is rectified. If the fault persists, run the reboot command to restart the switch or power cycle the switch, and check whether

## 6 GPON ONU Abnormal State

6.1 GPON ONU Abnormal State This topic describes how to troubleshoot common faults in ONU abnormal state, including ONU fail to go online, fail to recover ONU configurations, mismatch of ONU



### Troubleshooting Guidelines for Optical Modules

Use an optical power meter to check whether the transmit optical power of the optical module is normal. If the transmit optical power is abnormal, replace the optical module. Remove and reinstall the optical



### **Optical Module: Typical Optical Module Troubleshooting Procedure**

Use an optical power meter to test the receive power of the port and check whether the optical fiber is disconnected. Use one optical fiber to form a loop on the port to check whether the port goes Up. If



### **Contact Us**

---

For datasheets, pricing, or custom telecom energy solutions, please visit:  
<https://www.koskolong.co.za>