



Adam Tas Corridor Energy

Huawei switches aggregate fiber optic cables





Huawei switches aggregate fiber optic cables

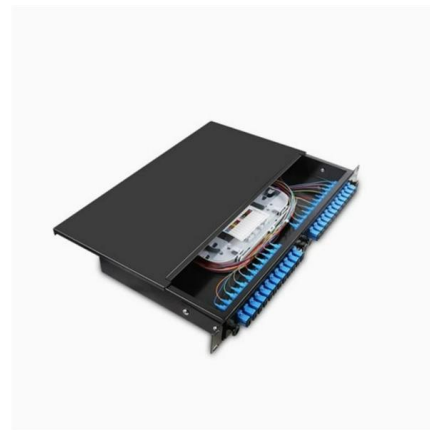


What Is LACP? How Does LACP Work?

LACP provides a standard negotiation mechanism that a Huawei switch can use to create and enable the aggregated link based on its configuration. After an aggregated link is formed, LACP is

Network Switches , Huawei Enterprise

Huawei Ethernet Switches Turbocharge your enterprise network with high-performance, high-availability for resilient services and simplified management.



How To Configure Interface Breakout And Aggregate On Huawei

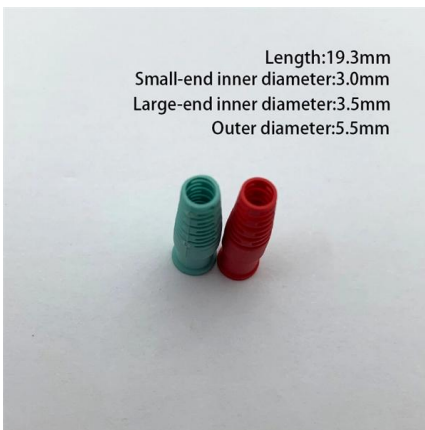
The breakout interfaces can be connected to 10G network through methods such as 1-to-4 fiber cable, optical modules paired with a 1-to-4 fiber adapter, or QSA adapter connected to 10G modules. This

What Is an All-Optical Ethernet Switch?

All-optical Ethernet switches are a type of switch that provides optical uplink and downlink ports,



making them an ideal choice for building an all-optical campus network. They can function as



Network Switches , Huawei Enterprise

Huawei campus switches are ideal for building future-proof campus networks with simplified management, high reliability, and service intelligence, across industries

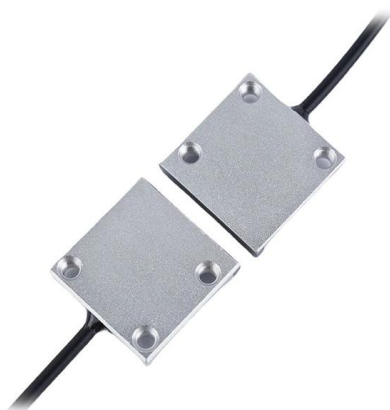
Huawei Fiber Switch: Speed Revolution? Can Lightning-Fast

Enter the Huawei fiber switch, a device engineered to turn sluggish copper-based networks into hyperspeed highways. But here's the catch: fiber optics aren't new. So why does Huawei's take



Huawei Fiber Optic Switches in 2024: Beyond the CloudEngine Hype

When a Dubai data center operator discovered 37% lower latency using Huawei's "forgotten" OptiXtrans E6600 fiber switches compared to mainstream alternatives, it revealed a critical truth: Huawei's fiber





Optical Module Solutions for Huawei S5700/S5720 Series Switches

When using switches, we may encounter many confusions, such as what types of optical modules are needed for different models of Huawei switches, and how to resolve issues encountered



Optical Fiber

AOC An active optical cable (AOC) is a fixed-length optical fiber with optical modules at both ends. It can be directly connected to an optical port on a device. In short-distance connection scenarios, AOCs

Huawei Switch 6810: Aggregation Overkill? Can Consolidating

Adding new branch locations or IoT zones typically demands new aggregation switches, fiber runs, and power circuits--projects spanning weeks. The Huawei 6810 's modular



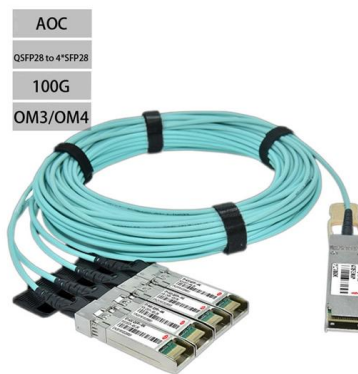
Switch Aggregation

An 8-port, Layer 2 switch made for 10G SFP+ connections.



Huawei Hybrid Copper-Fiber Cable Brochure

A complete site of the optical-electrical access solution consists of hybrid optical-electrical switches, hybrid modules, hybrid cables, pigtails, auxiliary material packages, and optical-electrical RUs or APs.



Huawei FTTH Solution

FTTR for Home Solution Huawei's FTTR solution extends fibers to rooms and provides various gigabit Wi-Fi 6 master/slave FTTR units, all-optical components,

Connecting Stack Cables

Select stack cables before connecting them. For details about the stack cables that apply to different ports on different switch models, see Stack Support and Version Requirements in the product



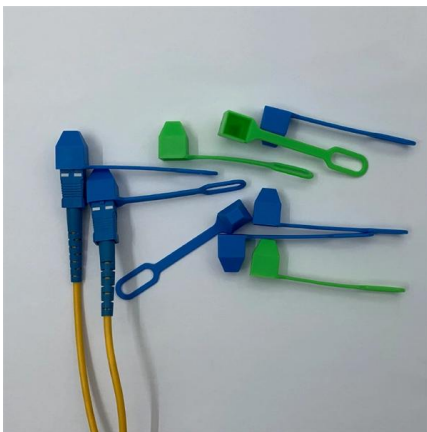


16 Cores Huawei Pre-connector FTTH Distribution Box

Telhua's 16 Cores Huawei Pre-connector FTTH Distribution Box offers high-density, reliable fiber management with plug-and-play installation.

Installing Stack Cables and Powering On the Switch

Installing Stack Cables and Powering On the Switch Preparing for Installation Ensure that the following components and tools are available before the installation: Components: copper cables, optical



Huawei Fibre Switch: Invisible Game-Changer? Can Lightning-Fast

Imagine replacing dirt roads with bullet trains: copper cables max out at 10Gbps; fibre optics blast past 100Gbps with room to spare. But why does this matter now? And could upgrading to

Huawei FTTH Solution

Huawei's FTTR solution extends fibers to rooms and provides various gigabit Wi-Fi 6 master/slave FTTR units, all-optical components, and optical cable routing tools,



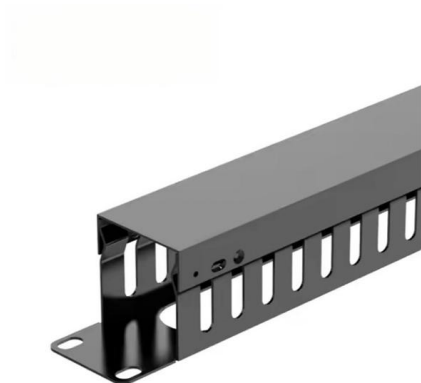
Huawei Fiber Optic Switches in 2024: Beyond the CloudEngine Hype

When a Dubai data center operator discovered 37% lower latency using Huawei's "forgotten" OptiXtrans E6600 fiber switches compared to mainstream alternatives, it revealed



Huawei 10G SFP+ Fiber Switch Price

Scan Huawei 10G SFP+ Fiber Switch Price, buy brand new Huawei switches with various types of payment. Fast delivery in 1-3 days. Live chat are supported to help.



Optical Fiber

To connect a fiber, align the optical connector with the optical port and gently insert the optical fiber into the port. To remove a fiber, press the clip on the connector and pull the fiber out.



Campus Switches

Campus Switches Huawei S Series Switches fully accommodate metro core, aggregation, edge aggregation, and access networking requirements, and are



How To Configure Interface Breakout And Aggregate On Huawei

The breakout interfaces can be connected to 10G network through methods such as 1-to-4 fiber cable, optical modules paired with a 1-to-4 fiber adapter, or QSA adapter connected to 10G

Assembling a Hybrid Cable 2.0

Assembling a Hybrid Cable 2.0 Context A hybrid cable is composed of optical fibers and copper cores. It is mainly used to connect a switch to an AP so that the switch can provide PoE power and transmit



Huawei Fiber Switch: Speed Revolution? Can Lightning-Fast

Enter the Huawei fiber switch, a device engineered to turn sluggish copper-based networks into hyperspeed highways. But here's the catch: fiber optics aren't new.



Contact Us

For datasheets, pricing, or custom telecom energy solutions, please visit:
<https://www.koskolong.co.za>