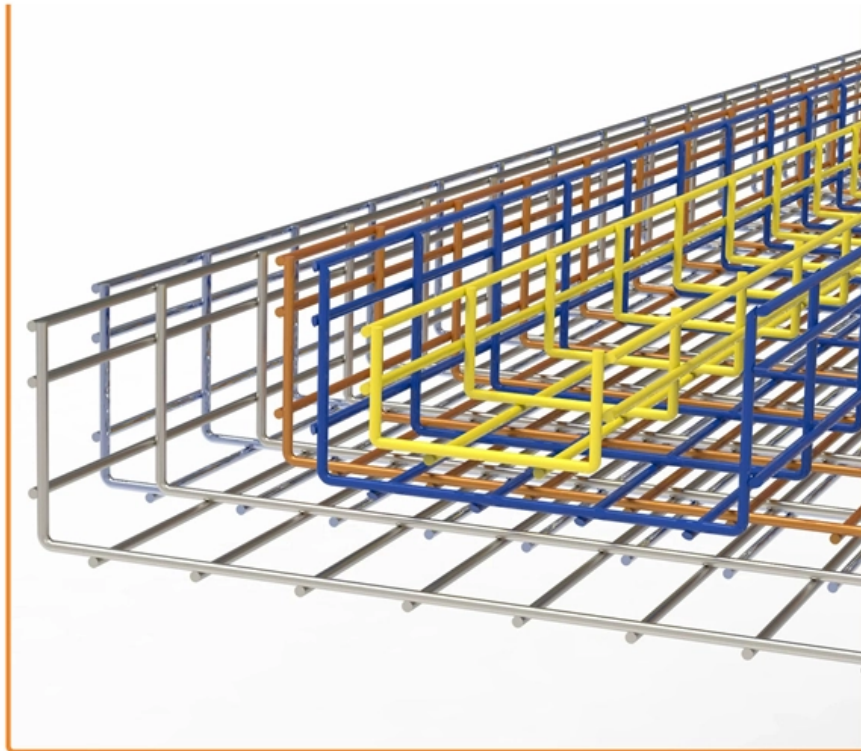




**Adam Tas Corridor Energy**

# **Huawei switches have very low aggregation rates**





## Huawei switches have very low aggregation rates

---



### Configuring Link Aggregation On Huawei Switches

Configuring Telnet on Huawei Switches via Versatile Routing Platform (VRP) Hub, Bridge, Switch, Router - Network Devices - Networking

### Learn Link Aggregation on Huawei Switches in 4

In this Huawei Link Aggregation Configuration lesson, you will learn how to configure Link Aggregation on Huawei switches. After this lesson, you will



### Huawei S6730 Switch - 10GE Aggregation & Core

The Huawei S6730 Switch series sets a high bar as both an Aggregation Switch and Core Switch, offering 10 GE access, 100 GE uplinks,

### Huawei Link Aggregation Configuration , Huawei LAG

Let's start to configure Link Aggregation on Huawei Switches in the example topology. Here,



firstly we will enter the configuration mode with "system-view "



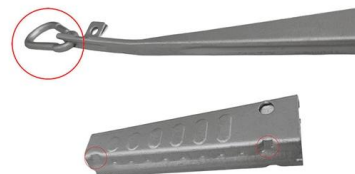
### **Standalone AC Solution: Aggregation Switches Function as Gateways**

Aggregation switches set up stacks to implement device-level backup and increase the interface density and forwarding bandwidth. A standalone AC is deployed in off-path mode. It centrally manages APs



### **CX320 Switch Module V100R001 Configuration Guide 15**

Link aggregation can work in manual load balancing mode and LACP mode. In manual load balancing mode, you must manually create an Eth-Trunk and add member interfaces to the Eth-Trunk.



### **Learn how to configure Manual Link Aggregation on Huawei Switches**

Huawei E-Trunk , Understanding MLAG (Multi-Chassis Link Aggregation) How to configure Stacking in Huawei Switches , What is Stacking , Stack Switches



## Huawei Link Aggregation Switch: Bandwidth Booster? Is Dead

Whether it's a severed cable, a flooded comms room, or a bad SFP module, your core network won't flinch. Stop treating outages as inevitable. A Huawei link aggregation switch turns



## Link Aggregation: Static vs Dynamic, LACP, and MLAG Configuration

This article provides a comprehensive explanation of link aggregation -- covering LACP, static vs dynamic link aggregation, and MLAG (Link Aggregation Plus) -- along with real

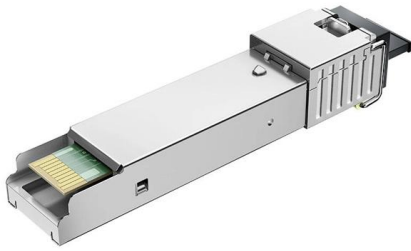
## Huawei Routing and Switching --

Huawei switches link aggregation Link Aggregation (Trunk) generally used in the core network, such as the core at the switch, in order to improve the throughput of network data.



## Link Aggregation Configuration

Example for Configuring Link Aggregation in Manual Mode When Switches Are Directly Connected Overview Ethernet link aggregation increases link bandwidth by bundling multiple physical links to



### Cisco 9000 Series Aggregation Services Routers (ASR 9000)

Compare Cisco 9000 Series Aggregation Services Routers (ASR 9000) vs Huawei Ethernet Switches. 57 verified user reviews and ratings



### How to Configure Link Aggregation on Huawei S5700 Switches?

As shown in Figure 1, configure an LACP mode link aggregation group on two Switch devices to improve the bandwidth and reliability between the two devices, with the following requirements: The two

### link aggregation (IEEE802.3ad) on Huawei S5700

Link aggregation, in other words trunking, is a technique that helps to increase bandwidth by bundling multiple physical interfaces into a logical one, named Eth-trunk. Besides bandwidth





## Configuring Aggregation and Access Switches to Be Managed by the

In this way, when configuring aggregation and access switches to be managed by the controller, you can configure the core switch as the management subnet gateway of the aggregation and access

### Case 1: Link Aggregation in Manual Mode

Configure link aggregation in manual mode on the Huawei S series switch. # Create an Eth-Trunk on the Huawei S series switch and add member interfaces to the Eth-Trunk.



### Comparison Between Implementations of Link Aggregation on Huawei

Comparison Between Implementations of Link Aggregation on Huawei and Cisco Switches  
Overview The implementation mechanism of link aggregation in manual load balancing mode and LACP mode

### Link Aggregation

In V200R011C10 and later versions, after the mixed-rate link enable command is run, interfaces with different rates can be added to the same Eth-Trunk interface. When an Eth-Trunk performs load

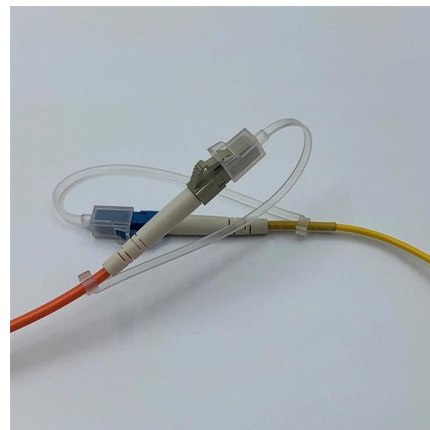


## LINK AGGREGATION , CONFIGURING ETH-TRUNK IN LACP

This video generally talks about link aggregation and deeply explains how you can configure ETH-TRUNK in LACP mode, set the preemption delay and also shows how to configure load-balancing in the

## Configuring Link Aggregation in LACP Mode

S9300 and S9300E V200R008 (C00& C10) Configuration Guide - Ethernet Switching This document describes the configuration of Ethernet services, including configuring link aggregation,



## 10GE Aggregation-Huawei Switches VS. Cisco Switches

This article will make a comparison between Huawei switches and Cisco switches in terms of 10GE aggregation. Huawei has a broad portfolio of next-generation



## 01-03 LINK AGGREGATION CONFIGURATION

Ethernet link aggregation, also called Eth-Trunk, bundles multiple physical links into a logical link to increase link bandwidth, without having to upgrade hardware. Link aggregation provides link backup



### Huawei Switch 6810: Aggregation Overkill? Can Consolidating

Stepping into a cluttered network closet tells you everything. Tangled fiber links snaking between stacked switches, blinking alarms from overloaded ports, and the heat haze of hardware begging for

## Contact Us

---

For datasheets, pricing, or custom telecom energy solutions, please visit:  
<https://www.koskolong.co.za>