



**Adam Tas Corridor Energy**

# Huijue Fiber Optic Switch IP Configuration

## Pre-Terminated Patch Panel



Standard 19" width



Max 144 fibers in 1U



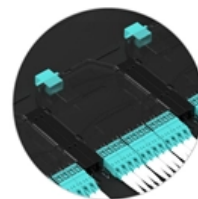
Ultra-High Density Ready



Dual-rail, easy install  
& maintain



Lightweight ABS  
MPO cassette



Premium sheet metal  
with matte coating





## Huijue Fiber Optic Switch IP Configuration

---



### Quick start guide Fibersystem Fiber Optical Switches Fibersystem AB

Step 2: Go to your web browser and go to: 192.168.1.1 Fibersystems Fiber Optical Switches has below settings as default: : 192.168.1.1  
Netmask: 255.255.255.0 De The setings can be changed after login.

### NVR Configuration for IP Cameras with and without PoE

Learn how to set up your NVR for IP cameras using PoE switches or external PoE solutions. Our guide covers hardware and software setup,



### How to Connect Fiber Optic Cable to Router: A Step-by

However, setting up a fiber optic connection to your router can seem daunting if you're unfamiliar with the process. In this guide, we'll walk you through



### Configuring Fibre Channel Interfaces

Send feedback to [nx5000-docfeedback@cisco](mailto:nx5000-docfeedback@cisco)  
1-2 Cisco Nexus 5000 Series Switch CLI Software



## Configuration Guide OL-16597-01 Chapter 1 Configuring Fibre Channel Interfaces Information About



### **Company Profile , Leading Network Server Cabinet,**

Company Profile Hai'an Guangyi Communication Equipment Co., Ltd. is a technology-based enterprise invested and established by Shanghai Huijue

### **Configuring Attributes for an Optical Interface**

The configuration personnel can pre-configure the transmission medium type on optical interfaces and configure functions on the interfaces. These functions take effect after the installation



### **Switch Web**

With multiple ports, the layer 2 switch (hereinafter referred to as "the device") is reliable and easy to install and maintain, providing advanced data exchanging on the basis of high-performance access.



## Huawei Switch Configuration Guide , PDF , Network

This document provides instructions for configuring Huawei switch commands. It discusses starting a configuration session, viewing different configuration modes,



## How to Assign an IP Address in a Huawei Switch? Why

Configuring an IP address on a Huawei switch isn't just a technical checkbox--it's the foundation of a reliable, responsive network. Whether you're

## Master the Basic Command Configurations of Huawei,

This comprehensive guide, brought to you by Router-switch , the leading global supplier of network hardware and software solutions, will walk you



## Ethernet Interface Configuration Commands

This document describes all the configuration commands of the device, including the command function, syntax, parameters, views, default level, usage guidelines, examples, and related commands.



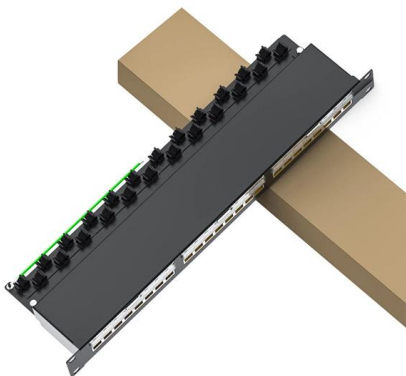
## How to Assign an IP Address in a Huawei Switch? Why

Validate the setup by pinging the IP from a connected device or using display ip interface brief in the CLI to list all configured interfaces. If the IP doesn't



## Configuring Unidirectional Single-Fiber Communication

The unidirectional single-fiber communication function can address this issue. A single fiber means that two optical modules are connected by only one fiber, and unidirectional communication means that



## Ethernet Interface Configuration Commands

S1720, S2700, S5700, and S6720 V200R011C10 Command Reference This document describes all the configuration commands of the device, including the command function, syntax, parameters, views,





## **FiberSwitch\_rev5\_08-07-19\_DRAFT.pmd**

The initial configuration of the fiber switch must be made before connecting it to the system. The fiber switch has four RJ-45 jacks (P1-P4) for Ethernet connections and two pair of fiber optic connection

## **ICT Infrastructure , Leading Network Server Cabinet,**

Fiber Optical Components Manufacturer More than 20 Years Experience At the heart of every fiber-to-fiber and fiber-to-device interconnect is a precision fiber optic



## **01-01 IP ADDRESS CONFIGURATION**

To connect a PC to the Internet, you need to apply an IP address from the Internet Service Provider (ISP). An IP address is a numerical label assigned to each device on a computer network. An IPv4

## **Shanghai Huijue Network Communication Equipment Co., Ltd.**

Shanghai Huijue Network Communication Equipment Co., Ltd. is a China-based supplier and exporter of integrated cabinet, optical fiberjoint enclosure and related products.



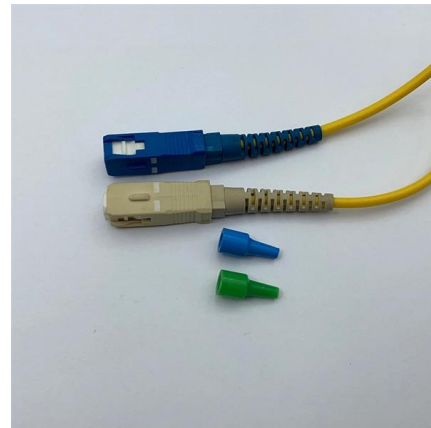
## How to Setup a Fiber Optic Home Network for MAXIMUM SPEED!

Beginner's introduction and guide on how to install and set up a Fiber Optic network cable in your home or office. Future-proof your setup, increase bandwidth



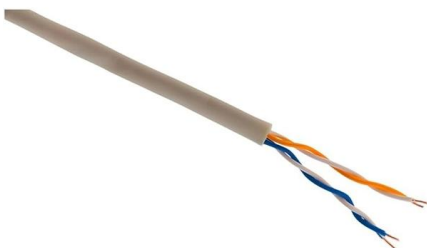
## S Series Campus Switches Quick Configuration.pdf

This document describes how to log in Huawei S series switches for the first time and fast configure the switches, and describes the procedures of configuring unconfigured switches in three



## FiberSwitch\_rev5\_08-07-19\_DRAFT.pmd

The Management Station requires fault mask, agent configuration, agent event configuration and agent traps configuration settings to supervise the fiber optic switch using Simple Network Management





## Installation and Configuration Guide for the Fiberhome AN5506-01A

In the realm of modern telecommunications, fiber-optic networks have emerged as the backbone of high-speed internet connectivity. The Fiberhome AN5506-01A Optical Network Unit



## Huawei Enterprise Support Community

We're sorry but web site doesn't work properly without JavaScript enabled. Please enable it to continue. Loading

## Example for Configuring a Layer 3 Switch to Work with a Router for

Configuration Roadmap The configuration roadmap is as follows: Configure the switch as the gateway of users to allow users to communicate across network segments through VLANIF interfaces. Configure



## Huawei Ethernet Switch Quick Setup Guide

Introduction This document covers the basic setup requirements for a Huawei Ethernet Switch when using in conjunction with MuxLab AV over IP products.



## Leading Network Server Cabinet, Integrated Outdoor

Whether I need outdoor cabinet products or specialized fiber optical components, they always deliver high-quality solutions that meet my specific needs. In addition



## Huawei Ethernet Switch Quick Setup

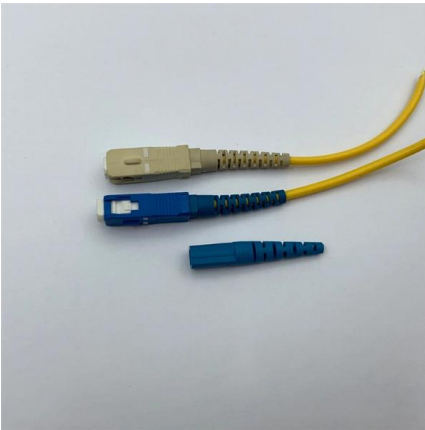
Introduction This document covers the basic setup requirements for a Huawei Ethernet Switch when using in conjunction with WPW AV over IP products. The setup examples and screen shots shown



## Configuration Guide

Do not modify the IP address of the switch when you configure the switch through Telnet because the modification may terminate Telnet connection. Otherwise, set up the connection again after entering



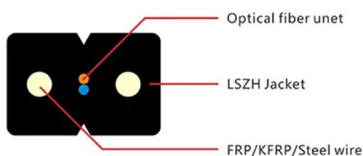
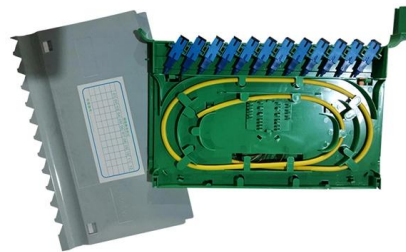


## Example for Configuring a Layer 3 Switch to Work with a Firewall for

Configure the switch as the DHCP server to assign IP addresses to users. Configure an interzone security policy for the firewall so that packets of different zones can be forwarded. Configure the PAT

## Basic Huawei Router Configuration , Huawei NE 40

Here, we will focus on Basic Huawei Router Configuration with eNSP. We will configure Huawei NE 40 routers with basic huawei commands.



## How can I set up the Internet for my new HUAWEI router

Prepare for the configuration: a. Connect an Ethernet cable from the WAN port of your router to a LAN port on the Internet source (such as a broadband modem or

## Fiber Optic Components , Leading Network Server

Founded in 2002, Huijue Network is a high-tech service provider integrating intelligent network communication equipment and computer intelligent network



## Home Fibre, TV, Mobile & Lifestyle , Now with Unlimited 5G

Connect the Wi-Fi 6 router's power adapter to your power supply socket and switch it on. Please wait between 15 to 30 minutes for our system to run the auto-configuration and establish the connection.

### Configuring Fibre Channel Switches (Applicable to Fibre Channel

Configuring Fibre Channel Switches (Applicable to Fibre Channel Connections) Fibre Channel switch configuration includes setting domain IDs, configuring the long-distance mode for links, and creating



SC connector  X 12

## Contact Us

For datasheets, pricing, or custom telecom energy solutions, please visit:  
<https://www.koskolong.co.za>