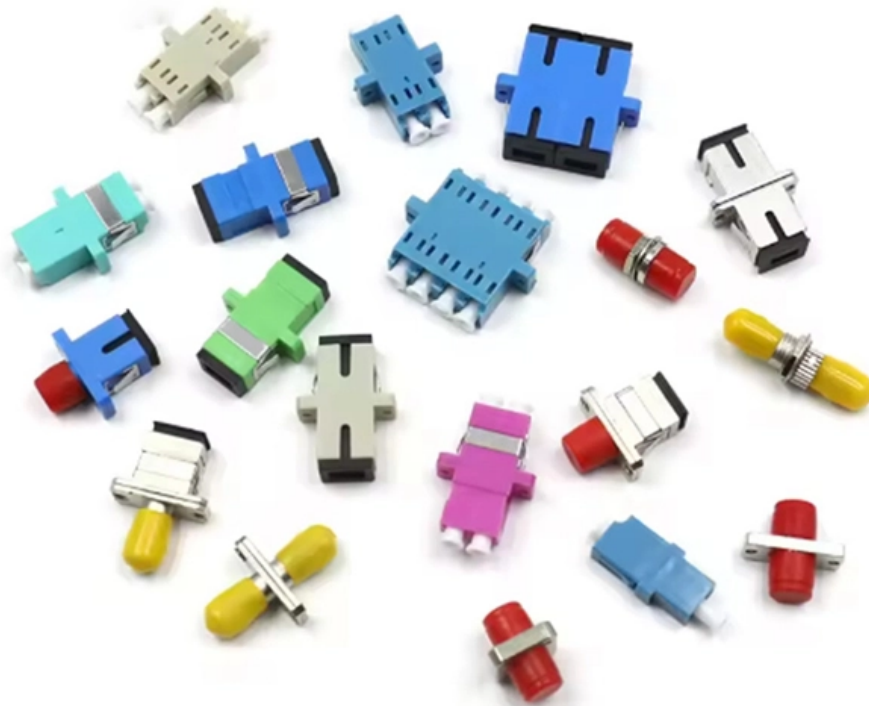




Adam Tas Corridor Energy

Huijue commands for checking optical modules





Overview

Run the following command to view interface information: `display interface <interface-type> <interface-number>` The output includes interface rate, module type, link status (the state being UP is a prerequisite for normal operation) and traffic statistics, which can be used for. When the optical module on an interface is faulty, you can run the display commands to view information about the optical module. Taking the Huawei 5700 series switches as an example, the commands to view optical module information are as follows: `Transceiver Type :1000_BASE_SX_SFP Connector Type :LC Wavelength(nm) :850 Transfer Distance(m) :300(50um),150(62)`. For inquiries about our products or pricelist, please leave your information with us and we will be in touch with in 24 hours.



Huijue commands for checking optical modules



Checking 400GE Transmit (TX) and Receive (RX) Optical Power in

For checking transmission links on Huawei routers, it is important to know how to check the optical power of 400GE modules or interfaces for troubleshooting and to ensure the desired or optimal range

Huawei Optical Switch View Optical Module Commands

Taking the Huawei 5700 series switches as an example, the commands to view optical module information are as follows:



How To View The Optical Module DDM Information On

View the optical module information on Huawei switches and H3C switches through the command

Checking 100GE Transmit (TX) and Receive (RX) Optical Power on

For checking transmission links on Huawei Routers, it is good to know how to find out the



optical power of 100GE modules or interfaces for troubleshooting and making sure the desired or



How to view the optical module DDM information on

View the optical module information on Huawei switches and H3C switches through the command

Displaying Optical Module Information

Context When the optical module on an interface is faulty, you can run the display commands to view information about the optical module.



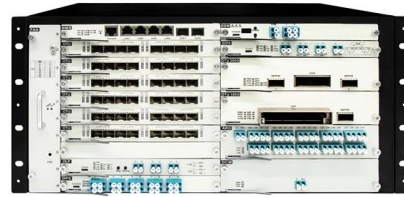
Introduction of Optical Modules on Huawei Switches

Check Optical Module Parameters: If an optical module is installed in a running switch, you can run the display transceiver command to view parameters of the



Displaying Optical Module Information

Run the display transceiver diagnosis interface [interface-typeinterface-number] command to view diagnostic information about a specified optical module. This command displays the digital diagnostic



View the Optical Module Status on a Switch through the Command

Once the transceiver and fiber optic cable are plugged in properly in the switch optical module, you should be able to view the current information for the optical connection, which helps

Huawei Switches Viewing Optical Port Receiving and Sending

Use the command display transceiver to view the optical module information of all optical ports, and use the command display transceiver interface interface-type interface-number to view the



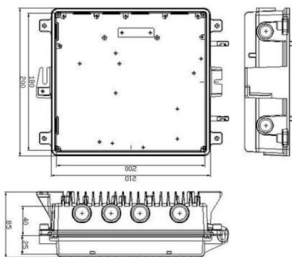
How Do I Check the Transmit and Receive Optical Power of an Optical

Run the display interface transceiver verbose command to check the transmit and receive optical power of an optical module.



Checking Optical Module Information of the Interface

Run the display interface interface-type interface-number transceiver [verbose] command to check optical module information. display interface 10ge 1/0/1 transceiver verbose



Huawei Optical Module Display Commands

The display optical-module command displays information about optical modules, including basic information (vendor, bandwidth, wavelength etc.) and extended information (temperature, voltage,

How To Read Optical Module Information On Huawei Switches

The following uses the Moduletek SFP-10G-LR module connected to a Huawei S6700 switch as an example to introduce how to read information of the connected optical module on a Huawei switch.





View the Optical Module Status on a Switch through the

This article provides instructions on how to view the Optical Module Status on your switch through the Command Line Interface (CLI).

Huawei enterprise switches

See the interface module via the optical display command information, including general information of the optical module, manufacturing information, and alarm information.



Contact Us

For datasheets, pricing, or custom telecom energy solutions, please visit:
<https://www.koskolong.co.za>