



Adam Tas Corridor Energy

Incoming wires to the distribution box are reversed





Overview

Here are the steps to correct wire reversal: Turn off the power to the electrical circuit at the main electrical panel. In electrical wiring, the live wire carries current from the power source while the neutral wire returns current to complete the circuit. Read: What is ghost voltage?

Many modern devices using switched mode power supply. The direction of incoming and outgoing wires of low-voltage circuit breakers cannot be reversed because the operating mechanism on the moving contact side and the static contact side of the circuit breaker has different dielectric properties, and the arc roots on the moving and static terminals of.



Incoming wires to the distribution box are reversed



What Happens if the Live and Neutral Wires Are

Check that ground wires are correctly bonded to metal junction boxes and fixtures. Preventing Reversed Polarity Situations The best approach is to avoid reversed

Understanding Circuit Breaker Wiring Configurations in

Correct wiring methods for circuit breakers within distribution boxes are fundamental to ensuring electrical safety and compliance with established codes.



Reverse Polarity Problems? Here's How to Solve Them

Reverse polarity is a common electrical issue where the hot and neutral wires in an outlet are incorrectly connected. This miswiring can lead to

Reverse Polarity Problems? Here's How to Solve Them

Reverse polarity is a common yet often overlooked issue that can have significant



implications. When the wiring in an outlet is reversed, it can



A guide to understanding home breaker box wiring

Learn how to read and understand a home breaker box wiring diagram to ensure the safety and functionality of your electrical system.

Understanding Reverse Polarity: Risks & Solutions

If a circuit is wired correctly, current flows safely from the live wire to neutral. But if polarity were reversed, current would flow in the opposite direction,



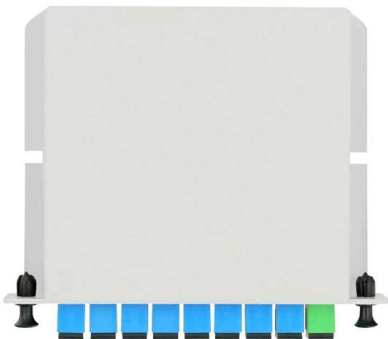
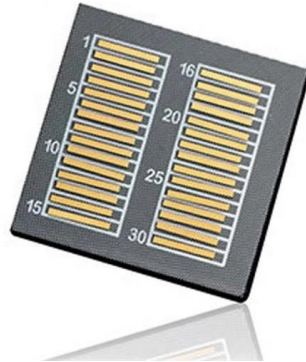
Residential Electric Meter Box Wiring Diagram Guide

Clear wiring diagram for residential electric meter box, showing connections, safety components, and layout for accurate installation and maintenance.



What's in a Main Service Panel (Breaker Box)? , A

In this particular box, we have quite a few 240V applications with double pole breakers. With these wider, double-pole breakers, you can see how a



Reversing the Essentials: What Happens When Ground and Neutral

But what happens if these two essential wires are reversed? In this article, we'll delve into the consequences of swapping ground and neutral wires, the potential risks, and how to prevent

What happens if you wire live and neutral the wrong way?

What happens if you wire the hot and neutral backwards? One common issue with electrical outlets is reverse polarity, also known as "hot-neutral reversed." In this condition, the outlet has been wired



How To Wire A Distribution Board (DB Board): A Step-By-Step Guide

A distribution board (DB board), also known as a fuse box or breaker panel, is essential for managing electrical circuits in a building. It distributes electrical power from the main supply to



What Happens If Black and White Wires Are Reversed? Exploring

The black wire is typically the hot wire, carrying the electric current, while the white wire is the neutral wire, providing the return path for the current. Reversing these wires disrupts the flow of



Why can't the circuit breaker wire be reversed?

The direction of incoming and outgoing wires of low-voltage circuit breakers cannot be reversed because the operating mechanism on the moving

Line vs Load: The Ultimate Wiring Guide for Safe and

For multi-gang boxes, distribution boards, or solar combiner units, use pre-labeled markers or HUYU's custom wire labeling kits to mark Line and Load wires clearly





A Definitive Guide To Distribution Boxes

The distribution box acts as the center of power distribution, distributing electricity to all connected devices. A distribution box, also known as a distribution board, panel board, breaker

GFCI Outlet - Line vs Load - What is the Difference?

If you want additional Non GFCI-protected circuit (s), you may wire it through the line wires. When to use the Load terminals? Use the Load terminals



Dangers of Reversed Polarity

Repairing a receptacle with reversed polarity is often as simple as figuring out where the hot and neutral connections are crossed and correcting the terminations.

What Happens When Power Supply Polarity Is

Understanding the effects of reversed polarity and learning how to identify and rectify it can save time, money, and resources. In this article, we will



What Happens If Hot and Neutral Are Reversed?

When the hot and neutral wires are reversed, the primary safety component of the circuit--the switch--is rendered ineffective at de-energizing the appliance. Switches and fuses are



Safety Alert Resolving Reversed Wiring , Huston

Electrical wiring issues can pose serious safety risks in homes and businesses. Reversed hot and neutral wires are a common problem that can lead



Why can't the circuit breaker wire be reversed?

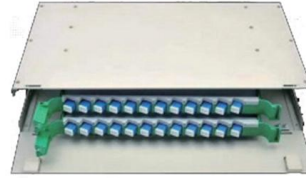
In this way, the upper and lower incoming wires of the circuit breaker are largely related to the manufacturing technology of the circuit breaker. For





Testing for reversed polarity

The growing number of smart meters installed across Australia has led to an increase in the number of reversed polarity incidents. But what is the correct way of conducting a reverse polarity



Connecting Inverter to Distribution Box: Essential Safety

In this article, you will find information about connecting inverter to distribution box: essential safety tips, step-by-step guidance, and common mistakes that often

A step-by-step guide to wiring your breaker box

Identify how the breakers are connected to the bus bars and follow the lines to see how they are distributed to the electrical panels and circuits throughout the



What Are the Safety Risks of Reversed Polarity and How to Prevent.

Reversed polarity is a serious concern that can lead to safety hazards, including overheating, electrical damage, and fire risks. To ensure safety and reliability, our power supplies are



The installation requirements for the distribution box

A distribution box is the heart of any electrical system. It takes the incoming power and safely distributes it to different circuits throughout your



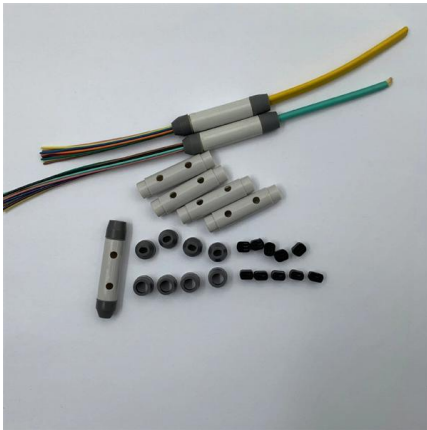
What happens when Phase and Neutral are reversed ?

Contrary to what many think, when phase and neutral are reversed, the connected appliance will more than likely continue to work as designed.

Why can't the circuit breaker wire be reversed?

The direction of incoming and outgoing wires of low-voltage circuit breakers cannot be reversed because the operating mechanism on the moving contact side and





Wiring Of Neutral Block In Distribution Box

Let's talk about some of the ground wires in the distribution box of our family. If the indoor distribution box is designed according to the latest "code for electrical design of civil buildings", then

Contact Us

For datasheets, pricing, or custom telecom energy solutions, please visit:
<https://www.koskolong.co.za>