



Adam Tas Corridor Energy

Industrial switches are used for





Industrial switches are used for



What is an industrial switch? And what are the differences between it

July 18, 2025 What is an industrial switch? And what are the differences between it and an ordinary switch? In modern factories, robotic arms precisely grasp components, AGV trolleys shuttle along

Industrial Switches for Modern Manufacturing and

Discover how industrial switches support modern manufacturing and automation with durability, flexibility, quality of service, and robust cybersecurity.



- ✓ 50KW/100KWH
- ✓ HIGHER POWER OUTPUT IN OFF-GRID MODE
- ✓ CONVENIENT OPERATION & MAINTENANCE
- ✓ PRE-WIRED



What is an industrial switch and its applications

What is an industrial switch? Today industrial switch plays a significantly important role in various industries such as energy, environmental protection,

What is an industrial switch and its applications

The industrial switch is designed to meet the needs of industrial environments, providing



reliable network connections between machines and other devices. In

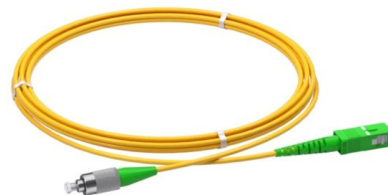


Industrial Switches Explained: What Purpose and/

A Switch that combines a phone-call carrying device, switching class, control, and signal & command device, and other functions in a single unit is capable of connecting user wires, telecom

Industrial Switch: How Much Do You Know?

An industrial switch, also known as an industrial Ethernet switch, is a type of networking technology specifically designed for use in industrial settings. It



Industrial Switches Explained: How They Power Modern

Industrial Switches Explained: How They Power Modern Factories Are ongoing network failures at your factory slowing down your work? If it is so, then the



What is an industrial switch

Abstract of this article What is an industrial switch The role of industrial switches How to choose a switch What are the characteristics of PUSR switches? Application scenarios of industrial switches Why use



Industrial switches demystified: Types, materials used and design

Industrial switches form a crucial backbone in modern manufacturing, automation, and large-scale industrial networks. These switches are engineered to operate reliably under harsh environmental

Top 7 Electrical Switches for Industrial Use

7. Rocker Switches Rocker Switches are similar to toggle switches but operated by pressing one side of the switch down. Their robust design and ease of use make them suitable for



Comprehensive Analysis of Industrial Switches

Comprehensive Analysis of Industrial Switches: An In-Depth Guide to Types, Pros and Cons, and Application Scenarios In the wave of the Industrial Internet, industrial switches, serving as





Industrial Switches: Everything You Need to Know

Industrial switches are used to connect industrial equipment, such as sensors, controllers, and other nodes. They are designed to be rugged and reliable so that

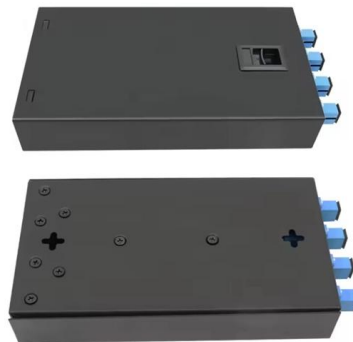


Industrial Switch: Advantages and Different Types

An industrial switch refers to a networking device that is specifically designed to operate in harsh industrial environments. It is used to connect and

Application scenarios of industrial switches in multiple industries

6. Industrial network expansion In addition, industrial switches are also used to expand the coverage of industrial networks and increase the number of connections between network nodes.



how do industrial switches work

Industrial switches are advanced controls for managing information, electricity, or process variables in industrial settings. Unlike consumer switches, they're made



Why and When to Use Industrial Switches , Telecom

Switches are one of the most essential building blocks for industrial and corporate networks anywhere in the world. Industrial Ethernet switches come



Industrial Switches , Types, Applications, and Benefits in Automation

Learn about industrial switches, their key types, uses, and benefits in automation, from enhancing control to boosting efficiency and safety in industrial systems.

EDS-2005-EL Series

Introduction The EDS-2005-EL series of industrial Ethernet switches have five 10/100M copper ports, which are ideal for applications that require simple



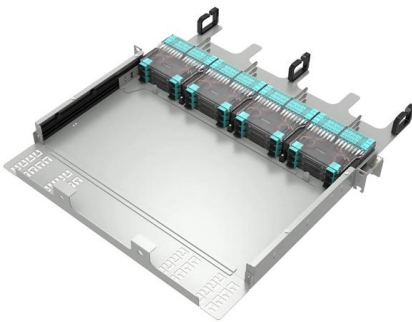


Industrial Switches in Industrial Automation

Industrial switches are widely used in industrial automation architecture. They are used to establish reliable communication infrastructure, connect various industrial automation equipment,

Application scenarios of industrial switches in multiple industries

In the field of industrial automation, industrial switches connect various industrial devices, such as programmable logic controllers (PLCs), sensors, and actuators, to achieve industrial automation



What are common applications for industrial switches?

Industrial switches are specialized networking devices designed to operate in harsh environments, providing reliable communication and data transfer between

Switches 101: Understanding Their Role in Industrial

Switches play a vital role in industrial automation systems, enabling the control and monitoring of electrical circuits. They act as gatekeepers, regulating the flow of



Top Four Advantages of Using Industrial Switch in Factories

Know how industrial switches are beneficial for use in rugged environments like factories, where there is a need for uninterrupted supply and heavy-duty tools.



Contact Us

For datasheets, pricing, or custom telecom energy solutions, please visit:
<https://www.koskolong.co.za>