



Adam Tas Corridor Energy

Industrial switches with optical ports 220V power supply





Industrial switches with optical ports 220V power supply

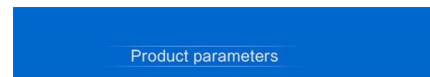


FR-7N3101.cdr

The New Generation Managed Industrial PoE Switch with 8-Port 10/100/1000Base-TX and 2xGigabit SFP ports provide reliable Ethernet transmission. To prevent fibre network communication during

SCALANCE X Industrial Ethernet Switches

SCALANCE X-100 switches are an affordable solution that provides many ports within a compact design. SCALANCE X-100 media converters transform electrical into optical signals and enable a



Industrial Ethernet Switches

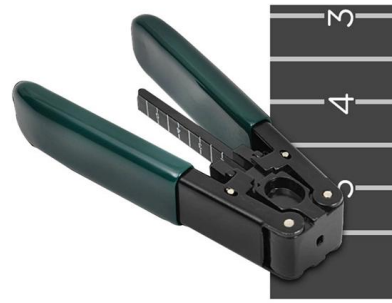
Provides an overview of deploying PoE in an industrial environment, exploring how this sector can benefit from PoE technology and describing the

H3C IE4320 Din-rail Industry Ethernet Switches

The IE4320 industrial switch series are the latest Ethernet switches developed with industrial



compliance and wide operating temperature in mind. All models are built with industrial grade components, with



Gigabit Switch PoE 8 Ports Industrial With 12-Port

It's equipped with dual power supply redundant backup to ensure this industrial switch work normally when there is obstacle of one power supply.

Campus Switches RG-SF2920-16GT2SFP-P 16-Port GE All-Optical PoE Switch

RG-SF2920-16GT2SFP-P 16-Port GE All-Optical PoE Switch, 2 × Gigabit Uplink Optical Ports
Various port combinations, rate increase, installation in a concealed telecommunication box, recommended



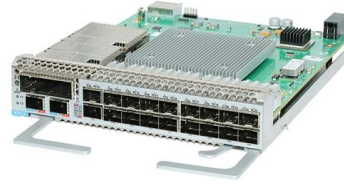
Industrial Ethernet Switches , Phoenix Contact

Our Industrial Ethernet Switch portfolio comprises Managed and Unmanaged Switches with Gigabit, PoE, IEC 61850 certification, and for DIN rail mounting.



Hanutech Unmanaged 6 Port Fiber Switch 10/100Mbps,6 Fiber Port

Our ESW-628 optical fibre switch has 2 Fiber Optic Duplex ports 100 Base-FX and 6 X 10/100Base-TX copper RJ-45. Works Best with Fibertronics Cat6 6 or Cat 5e ethernet patch cables.

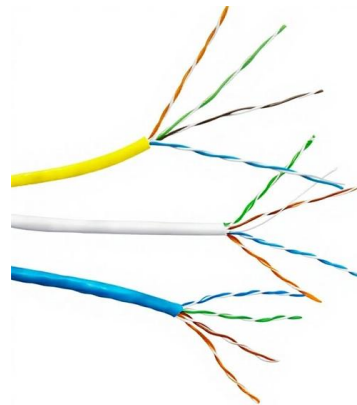


Ethernet Switches

Moxa provides a wide range of industrial Ethernet switches that feature industrial-grade reliability, network redundancy, strengthened security, easy management,

Industrial 8-Port PoE+ 4-Port SFP L2 Managed Switch

This switch provides 8 Gigabit Ethernet RJ-45 ports and 4 Gigabit SFP uplink ports. It meets IEEE 802.3af/at standard. All RJ-45 ports support Power-over-Ethernet



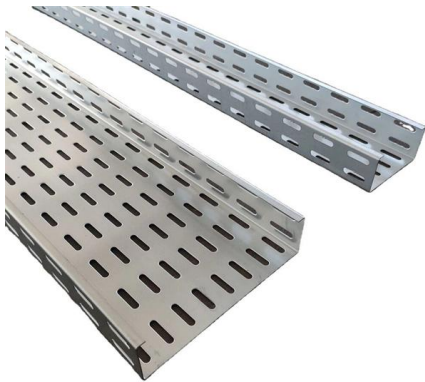
Industrial Ethernet Switches

Our switches are built for high network flexibility, cyber security and durability and are suitable for use in mission-critical environments.



Industrial 8-Port Gigabit PoE+ 4-Port Gigabit SFP L2 Managed

This series switch provides 4/8 Gigabit Ethernet RJ-45 ports and 2/4 Gigabit SFP uplink ports. The PoE types meet IEEE 802.3af/at standard. All RJ-45 ports support Power-over-Ethernet (PoE+).
Port 1



Industrial Ethernet Switches , WAGO

Expands copper networks with fiber optic technology Features Gigabit ETHERNET and SFP port Supports communication over distances up to 80 kilometers The

IES82162XMH-S-RP

Redundant power supply reduces possibility of single-point-of-failure. Hardened Grade As an industrial grade switch, IES82162XMH-S-RP is designed specifically to withstand extreme weather





Cisco C9200-48T-E 48-Port Gigabit Ethernet Switch

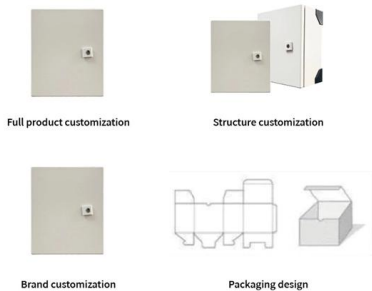
High-density 48-port Cisco Catalyst 9200 switch with modular uplinks, StackWise-160, and field-replaceable components for enterprise networks.

UOTEK UT-6406GM serial 4 Electrical Ports + 2 Optical

In order to meet the different requirements of industrial applications, this series adopts a modular design, up to 2 Gigabit optical fiber ports and 4 Gigabit



OEM/ODM
CUSTOMIZATION AVAILABLE



Industrial Switch 4-Port Gigabit PoE Management + 4

Industrial Switch 4-Port Gigabit PoE Management + 4 Gigabit SFP Optical Ports Featuring 4*10/100/1000M IEEE 802.3 af/at PoE injector ports + 4*100/1000M

WEB Management Fiber Industrial Switch 8 Port Gigabit 1000Mbps

Key attributes Type Managment Industrial Switch
Connector Type 4*SFP Power Source 9-57v Use
CCTV Network POE Model Number ATD-IDS8SF8G-
WEB Brand Name OEM Place of Origin



IES5100-24TF, 24-Port Gigabit Ethernet L2+ Managed

This layer 2+ industrial managed switch supports Layer 3 static routing,



RG-NIS2100-4GT2SFP-HP, 6-Port Cloud Managed Industrial Switch

RG-NIS2100-4GT2SFP-HP, 6-Port Cloud Managed Industrial Switch, with 1 x PoE++ Port, 3 x PoE+ Ports, and 2 x SFP Uplink Ports CCTV, Factory, Coastal Areas, Dusty Environment, etc.



Industrial Ethernet Switches , WAGO

WAGO's switch portfolio provides scalable Ethernet network infrastructure with excellent electrical and mechanical performance. These rugged devices are



Campus Switches RG-SF2920-8GT2MG2XS-P 8-Port GE All-Optical PoE Switch

RG-SF2920-8GT2MG2XS-P 8-Port GE All-Optical PoE Switch, 2 × 5G Electrical Ports (Backward Compatible) Various port combinations, rate increase, installation in a concealed telecommunication



Industrial Ethernet Switches - Simple and effective

Use the product selector in our eShop to choose the right industrial Ethernet switch! When selecting a switch, there are a lot of functions and features to consider in

Anforderungen

The integrated auto-crossing function of all twisted pair ports makes the use of crossed patch cables unnecessary. The switch automatically detects the pinout of the connected cable and adapts the port



Gigabit 2 Optical Port 4 Electrical Port Industrial Ethernet Switch (GL

Gigabit 2 Optical Port 4 Electrical Port Industrial Ethernet Switch (GL-7024G Series) Use high-quality photoelectric integrated modules to provide good optical and electrical characteristics Ensure reliable



Industrial Ethernet Switches , Phoenix Contact

Our Industrial Ethernet Switch portfolio comprises Managed and Unmanaged Switches with Gigabit, PoE, IEC 61850 certification, and for DIN rail mounting.



Contact Us

For datasheets, pricing, or custom telecom energy solutions, please visit:
<https://www.koskolong.co.za>