



Adam Tas Corridor Energy

Installation Process of Overhead Cable Tray Supports





Installation Process of Overhead Cable Tray Supports



Guide to cable support systems

The cable support lengths and fittings can basically be designed as cable trays, cable ladders or mesh cable trays, in which cables are routed. Fittings can, on the one hand, be used for horizontal or

Guide to cable support systems

Establishing partnerships with customers is a top priority for OBO, and OBO staff are available to support customers in all aspects of their projects, including products, installation and planning advice.



How Does Cable Tray Installation Work?

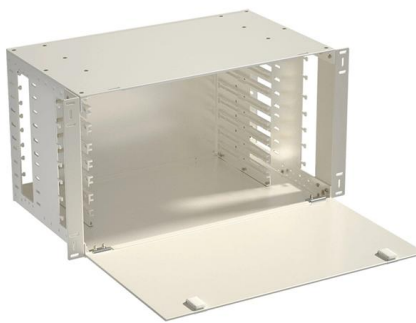
Explore Harbor Energy Solutions' guide on cable tray installation, detailing benefits, considerations, and step-by-step processes.

Cable Tray System Explained Animated Installation Guide , FK

This animated video demonstrates how cable tray systems are installed in industrial and



commercial projects. Watch the step-by-step process of cable routing, support fixing, and tray alignment.



DIY Installation: Mastering Light Duty Cable Tray Setup

Explore our comprehensive DIY guide to master the installation of light-duty cable trays. From planning to cable organization, follow step-by-step instructions for a tidy and efficient cable

INSTALLATION GUIDE

Center hung tray supports allow for quicker and easier cable installation by allowing cables to be deposited into tray systems from each side. There is a maximum load capacity per hanger of 318 kg



5 Steps to Learn How to Install Cable Trays

Installing a cable tray system requires careful planning to ensure it can support the weight of the cables and adheres to electrical safety codes. Here





Cable Tray Installation

Whether you're building a commercial setup or upgrading an industrial plant, proper cable tray installation ensures neat wiring, safe access, and easy maintenance. But before you lay the first tray



Master Cable Tray Installation: A Professional Step-by

Learn how to install cable trays for large-scale projects with our professional, step-by-step guide covering industry standards, safety protocols,

Cable tray manual

Some of these criteria include the required load that the cable tray must support, the distance between the cable tray supports, and ease of handling and installation.



Best Practice Guide to Cable Ladder and Cable Tray Systems

Introduction This publication is intended as a practical guide for the proper and safe* installation of cable ladder systems, cable tray systems, channel support systems and associated supports. Cable ladder



CABLE TRAY SYSTEMS GUIDE

Steel Ladder System Hubbell's NEXTFRAME® Ladder Tray is the effective and widely used cable runway that supports and delivers bundles of cable between cabinets, racks, and closets, along

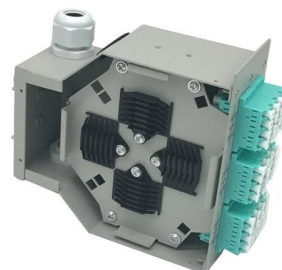


Cable Tray Systems: Requirements and Best Practices

Cable tray systems are structural components used to support insulated conductors and control, instrumentation, and communication cables. They are typically installed overhead, along

Overhead Cable Support Systems: A Comprehensive Guide

Overhead cable support systems are critical components in various infrastructure projects, ensuring the secure and organized routing of electrical, communication, and other types of cables. These systems



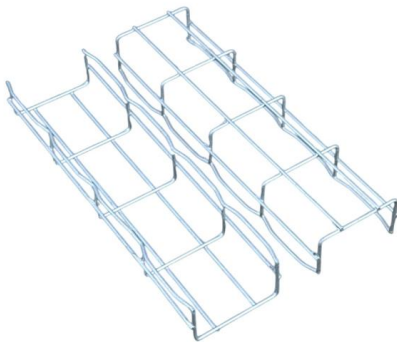


Cable Tray and Conduit Installation Method Statement

Step-by-step cable tray and conduit installation method with safety, quality and inspection procedures as per IEEE standards.

Beama Best Practice Guide , Installation Of The System , Cable

2.2 Structural characteristics When considering the installation of the cable supports system it is imperative to avoid the cutting or drilling of structural building members without the approval of the



Method Statement installation of Cable Trays and Ladders

The Cable Tray system is installed in electrical rooms, plant rooms, and service corridors. This section will guide you through the necessary steps to

Cable Tray Technical Guide A practical guide to product selection and

A practical guide to product selection and installation This guide for engineers and installers has been developed by ABB as a practical reference regarding cable tray characteristics, installation, and



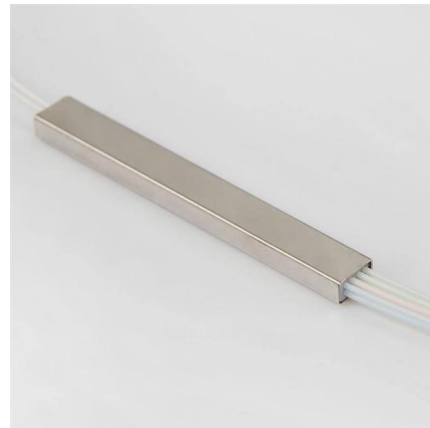
Wire Mesh Cable Tray , Legrand

Wire Mesh Cable Tray Manage cables with an open overhead system that's designed to handle heavy loads, easy to install on the jobsite



Cable Tray Installation Guidelines , PDF , Galvanization

This document provides details on installing cable trays and their support systems. It includes diagrams showing how to mount cable trays on walls using pre



Cable Tray Technical Guide A practical guide to product selection and

Cable tray length is selected based on the load to be supported, the distance between the supports (also referred to as the span), and handling and installation constraints.





Mastering Cable Tray Installation , Step-by-Step Guide for a Seamless

Mastering cable tray installation is crucial for creating a safe, organised, and efficient cable management system. By following this step-by-step guide, you can ensure a seamless setup that



A Guide to Installing and Supporting Electrical Cable Trays

This guide covers the critical steps, from selecting the right electrical cable tray and performing accurate cable fill calculations to managing a safe cable pull through

Microsoft Word

Center hung tray supports allow for quicker and easier cable installation by allowing cables to be deposited into tray systems from each side. There is a maximum load capacity per hanger of 3g



Unistrut Cable Tray Support Structures

Cable Tray systems are often used to support electric power, signal, control, instrumentation, and communication cables used for power distribution and



CABLE TRAYS GENERAL INFORMATION AND

Using cable trays as walkways can cause personal injury and also damage cable tray and installed cables. Performances of cable tray systems are dependent on



Technical Specification for Cable tray installation and cable laying work

1. Scope :- This specification covers the following major activities; - Fabrication and installation of Mild Steel (MS) support structure for Galvanized Iron (GI) Cable tray. - Installation of perforated GI Cable

Mastering Cable Tray Installation , Step-by-Step Guide for a Seamless

Learn how to install cable trays correctly. Get the ultimate step-by-step guide on setting up a seamless and reliable cable management system.





Contact Us

For datasheets, pricing, or custom telecom energy solutions, please visit:
<https://www.koskolong.co.za>