



**Adam Tas Corridor Energy**

# **Installation of 35kV Optical Cable Splice Box**





## Installation of 35kV Optical Cable Splice Box

---



### **THE SB01 SPLICE ENCLOSURE NOW INCLUDES A LID GASKET**

Creates a neater installation of the routing of the OPGW cables into the SB01 splice box. This eliminates the necessity of coiling extra OPGW cable onto the pole or tower.

### **High Voltage Splice Boxes Products**

Line Power's High Voltage Splice Boxes are designed to safely connect, splice, or extend high-voltage cables in demanding mining, tunneling, and industrial environments. Available in configurations up to



### **600 A 35 kV class separable splices catalog**

Installed either direct buried or in a vault, 600 A separable splices can be used on all 35 kV Class power distribution systems. They are made of high quality peroxide cured EPDM rubber to provide excellent

### **SB01 Splice Enclosure and Accessories**

Furnished with four plugged cable ports (2 aluminum and 2 plastic) for either All-Dielectric



Self-Supporting (ADSS) or Optical Ground Wire (OPGW) cables, the

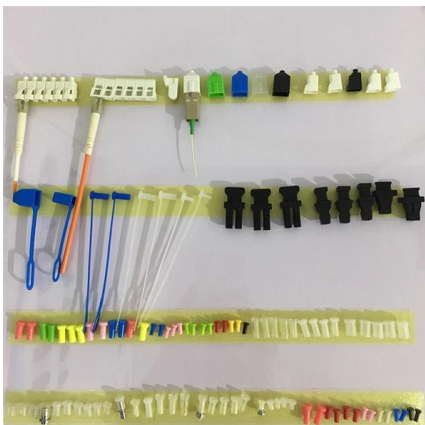


### 25/35 kV class EZ II splice installation instructions (D, E and F cable

The splice is designed to accept wide cable ranges. The 3" long aluminum compression connector is sized to ensure maximum current transfer and a cool running connection.

### OPGW Joint Box , OPGW Splice Box , OPGW

OPGW Joint Box The aluminium alloy joint box are applicable for connection protection of special optical cables,with the functions of direct and branch



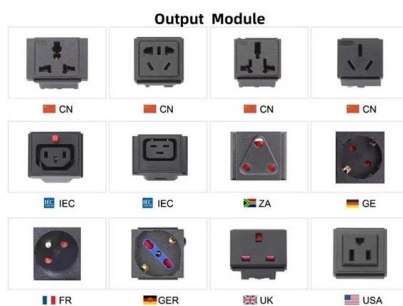
### OPTICAL FIBRE CABLES INSTALLATION GUIDE

The objective of this document is to be an optical fibre cable installation and laying guide, addressed to new installers, also being useful as a reminder to experienced installers. We should always consider



## 78-8125-9891-6 rev b

Product Description The 3MTM Cold Shrink QS-III Splice Kits 5535A and 5536A are 35 kV-class inline splices for tape, longitudinally corrugated (LC), wire and UniShield® shielded power cables. They are



### Why Choose Us



## Distributors: Splice Boxes & Optical Network Terminal

Distributors: Splice boxes, termination boxes & accessories Comprehensive selection of splice boxes, trays and more for your fiber optic network Splice boxes

## Introduction of optical cable splicing box enclosure

Installation of overhead optical cable splice box The connector of the aerial optical cable is generally installed next to the pole, and should be



## 5-35kV ELASPEED™ Splice

The Elasppeed splice is a "complete" splice, containing the splice core, a shielding braid and a jacket. Elasppeed splices are suitable for installation in aerial, direct bury, duct bank and manhole environments.



### One-piece EZ II splice catalog

General Eaton provides a permanent, fully-shielded, fully submersible cable joint with a current rating equal to that of the mating cable with its Cooper Power™ series 15, 25 & 35 kV Class one-piece



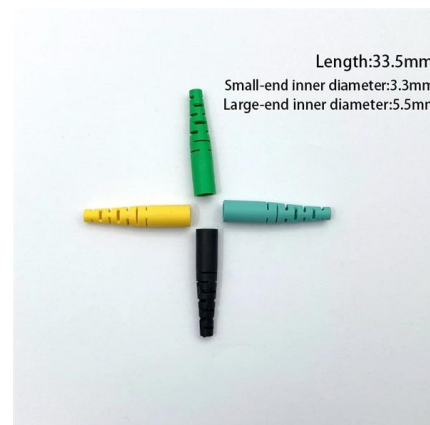
### Fiber Optic Splice Boxes

A splice box is a critical component in both electrical and fiber optic installations, serving as a protective enclosure for cable splices. Its primary function is to ensure the longevity, safety, and performance of



### OPTICAL GROUND WIRE (OPGW)

OPTICAL GROUND WIRE (OPGW) Telegence has become a professional company executing OPGW installation and commissioning of thousands of Kilometers





## The classic with fully equipped splice boxes

To save valuable time during installation, you can order splice boxes already fully equipped and ready to splice. We manufacture splice boxes according to

## Fiber Optic Cable Joint Box

Fiber Optic Cable Joint Box Riteoptic fiber optic cable joint box provides optical, sealing and mechanical strength of the continuity between adjacent fiber optic



## Fiber Optic Splice Boxes: Selection Criteria, and

This history is invaluable for streamlining future troubleshooting and network planning. Conclusion Fiber Optic Splice Boxes are fundamental to the resilience



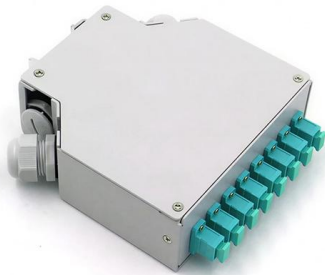
## Installation Method Of Optical Cable Joint Closure Splice

Connect two (ribbon) optical fibers according to the prescribed method, the connector is snapped into the slot of the fusion splicing unit, and the remaining



## Splices to Fit All Electrical Cable Systems

Abstract Unlike most splice manufacturers who design and provide one splice for all voltage classes and standards, 3M has many splices that can accommodate the different systems. This paper will discuss



## 15 kV and 25 kV class EZ II splice installation instructions

15 kV and 25 kV class EZTM II splice installation instructions (For A, B, and C cable ranges only)  
DISCLAIMER OF WARRANTIES AND LIMITATION OF LIABILITY The information,



## OSE Splice Trays

1. General This document describes the installation of optical fiber with both single fiber and/or ribbon fiber splices into Optical Splice Enclosure (OSE) metal splice trays (Figure 1).





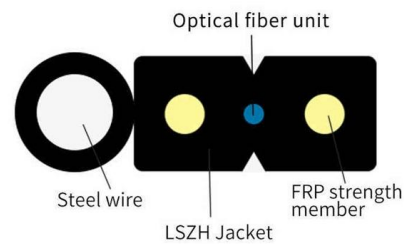
## 15, 25 and 35 kV EZ II splice product aid

15, 25 and 35 kV EZ II splice Eaton provides a permanent, fully shielded, submersible cable joint with a current rating equal to that of the mating cable with its Cooper Power™ series 15, 25, and 35 kV



## 78-8141-6496-4 Rev B

The 3MTM Cold Shrink QS4 Integrated Splice Kits QS4-35SP-1/0-350 and QS4-35SP-350-1000 are 35 kV-class inline splices for joining jacketed concentric neutral (JCN), flat strap, tape shield and



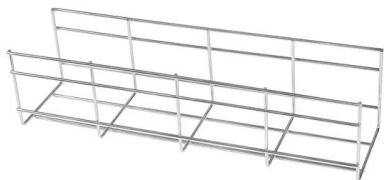
## Introduction of optical cable splicing box enclosure

The optical cable connection part, that is, the optical cable joint, is the part that protects the connection between two or more optical cables by the



### **Ohl transmission lines opgw installation procedure for**

This document provides procedures for installing OPGW fiber optic cables on transmission lines between 35kV and 400kV. It outlines the planning, installation,

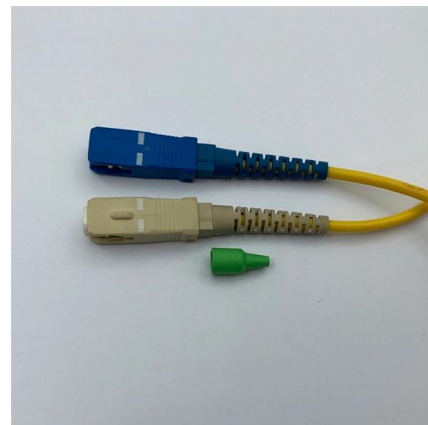


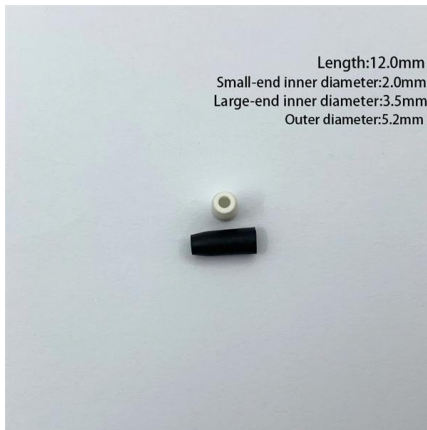
### **3M(TM) Cold Shrink QS-III Splice Kit 5468A, CN and JCN Cable, 35 kV,**

The cold shrink design fits type MV 90 or type MV 105 cables with copper or aluminum conductors while ensuring a quick installation and excellent cable size transitions.

### **A Complete Guide to Fiber Optic Splice Closures: Installation and**

A fiber optic splice closure is a small plastic box that protects the fiber cable inside. These closures are essential in FTTH (Fiber to the Home), FTTX (Fiber to the X), and backbone





### **3M(TM) Cold Shrink QS-III Splice Kit 5468A, CN and JCN Cable, 35 kV,**

3M(TM) 5467A Series Cold Shrink QS III Splice Kit is an inline splice designed to join 35kV jacketed concentric neutral (JCN) and concentric neutral (CN) power cables. The cold shrink design fits type

## **Contact Us**

---

For datasheets, pricing, or custom telecom energy solutions, please visit:  
<https://www.koskolong.co.za>