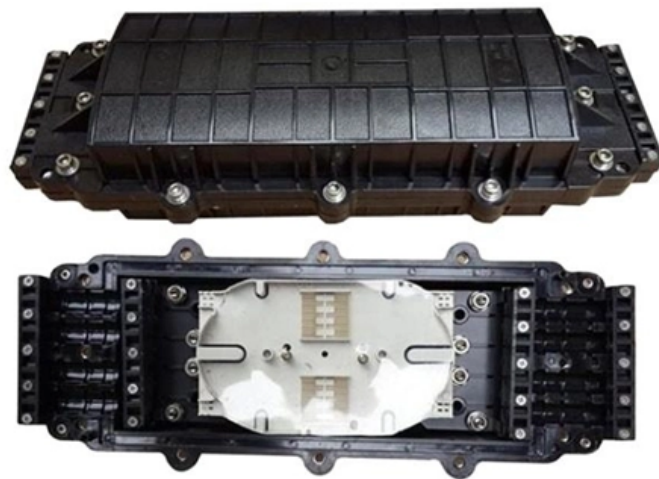




Adam Tas Corridor Energy

Installation of Outdoor Equipment Distribution Boxes





Overview

Ensure safe placement: install in dry, accessible areas with good ventilation and at appropriate height (typically ~1. Practice good wiring: secure grounding, neat cable management, proper insulation, and correct wire gauge and breaker size. ☐☐ Quick Answer: An outdoor electrical junction box is a weatherproof enclosure where electrical wires connect or split, required by code to protect connections from moisture, provide safe access for maintenance, and prevent electrical hazards in exterior applications. Publish Time: 03/08 2025 Author: Site Editor Visit: 918 The installation requirements and specifications of Distribution box involve many aspects, including site selection, fixing method, wiring specifications and safety protection. Safety is the most important factor in any Outdoor Electrical Panel Installation.



Installation of Outdoor Equipment Distribution Boxes

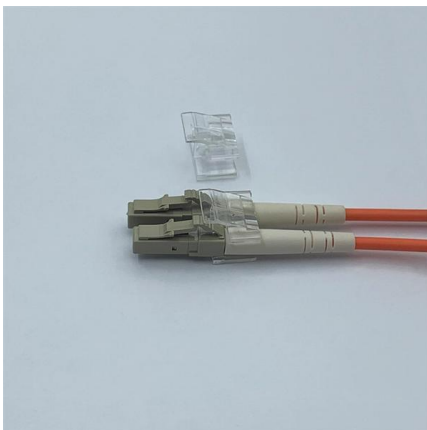


Outdoor Distribution Box SHA Series

The SHA series of outdoor power distribution boxes is a multi-functional power distribution equipment suitable for indoor and outdoor environments. It is made of

How to Mount Outdoor Electrical Panels Safely and

This guide explains everything you need to know before mounting an outdoor electrical panel, including installation methods, code requirements,



Requirements And Specifications For Installation Of

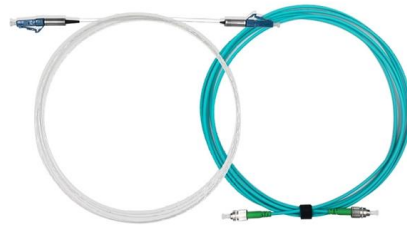
In flammable and explosive environments, explosion-proof distribution boxes should be selected and explosion-proof treatment should be carried out.

How To Safely Install an Outdoor Electrical Box for Your

Installing an outdoor electrical box can improve homeowners' access to power for outdoor



lighting, chargers, and other lawn equipment.



Temporary Power Distribution Box for Construction Sites and Outdoor

A proper temporary power distribution box must do more than distribute electricity. It must protect people, protect equipment, reduce installation chaos, and make emergency control simple.



A Comprehensive Guide to electric box outside Installation and

Installing an outdoor electric box is a crucial step for any homeowner looking to enhance their property's electrical infrastructure. This guide delves into the essential aspects of outdoor electric box



Exterior Electrical Boxes: 5 Best Weatherproof Picks 2025

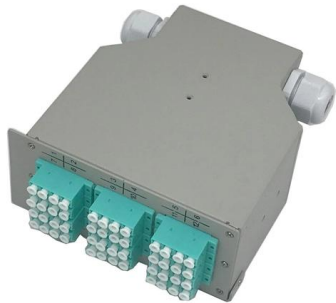
What Makes a Great Exterior Electrical Box? After two decades of installing exterior electrical boxes throughout Central Indiana, I've learned that not all outdoor





Safe Outdoor Electrical Panel Installation Guide

Learn how to complete a safe, code-compliant Outdoor Electrical Panel Installation with the right tools, PPE, and Linkewell's weatherproof power



Pre-Terminated Patch Panel

- Multi-application support
- Flexible configuraton
- Modular design



Multi-functional Sliding Patch Box, Modular



Modular Sliding Patch Box



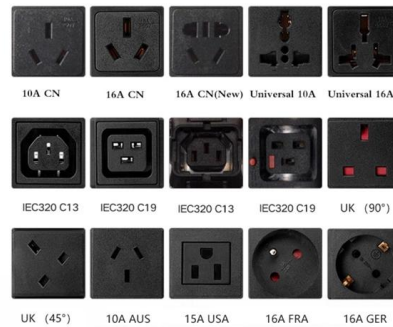
Sliding Patch Box, Modular

How to confirm whether the installation location of the

The electrical distribution box plays a vital role in the power system. It is responsible for distributing electricity to various circuits and equipment.

Understanding Distribution Boxes: A Comprehensive Guide

Distribution boxes are also used in infrastructure, utilities, renewable energy systems, and outdoor service installations where reliable power



Outdoor Fiber Distribution Units - Fiber Savvy

Outdoor Fiber Distribution Boxes For all of your outdoor fiber distribution needs, Fiber Savvy offers an excellent solution. Our Outdoor Fiber Termination Boxes are specially designed to house and protect



Power Distribution Boxes Explained Simply

Discover the essentials of a Power Distribution Box--how it works, key types, benefits, and tips to ensure safe, efficient electrical power management.

Motor protection controller



Requirements And Specifications For Installation Of

The installation requirements and specifications of Distribution box involve many aspects, including site selection, fixing method, wiring specifications

Electrical Power Distribution Box: A General Installation

A practical general guide to installing and maintaining electrical power distribution boxes for international buyers. Includes safety best practices and





AOC
QSFP28 to 4*SFP28
100G
OM3/OM4



Outdoor Electrical Panel Box: Expert Guide to Safe Installation

Outdoor Electrical Panel Box: Expert Guide to Safe Installation An outdoor electrical panel box, often called a subpanel, is a crucial component for distributing power to exterior locations

How to Install a Cable Distribution Box Safely and

In modern electrical systems, cable distribution boxes (also known as electrical distribution boxes or distribution boxes) play a crucial role as the key



Key Points Of Installation And Collocation Of Distribution Box In

If they are combined in the same distribution box, power and lighting lines should be set separately. 7. The wire inlets and outlets in the distribution box and switch box shall be set at the lower bottom of

How to Install a Distribution Box--A Comprehensive

First of all, you need to have a simple understanding of the definition of a distribution box, and make it clear which kind of distribution box you want to



ELECTRICAL INSTALLATION INSTRUCTIONS FOR OUTDOOR

In accordance with installation regulation IEC 60364-5-52 (DIN VDE 0100-522.3), cable systems must be designed in such a way that damage caused by the ingress of water is avoided in all cases.

How to Install an Outdoor Electrical Junction Box

Learn how to install an outdoor electrical junction box safely. Covers weatherproof selection, sealing techniques, and compliant mounting.



What is a waterproof outdoor distribution box

A waterproof outdoor distribution box shields electrical connections from water, dust, and weather, ensuring safe and reliable outdoor power distribution.





1. An Ultimate Guide for Metal Distribution Boxes

Among the various types of distribution boxes, metal distribution boxes stand out due to their durability, fire resistance, and grounding capabilities. This article explores

190X95X25mm



Technical Specifications for Outdoor LT Distribution boxes with

Scope: The scope of this specification covers Weather / Vermin proof LT distribution boxes (LTD) with controllers, MCCB, MCB, Bus bars, Contactors, CT's, Energy Meter, LT gas filled fixed capacitor, DC

Outdoor Electrical Junction Box: Types & NEC Code Requirements 2025

You'll learn what they are, why they're required, the difference between junction boxes and distribution boxes, types available (pull boxes vs splice boxes), NEC 314 sizing requirements,



Size determination, installation method and wiring mode

The distribution box is the central hub of the home circuit and the general control of our daily power consumption. It is an indispensable electrical equipment. If there



Contact Us

For datasheets, pricing, or custom telecom energy solutions, please visit:
<https://www.koskolong.co.za>