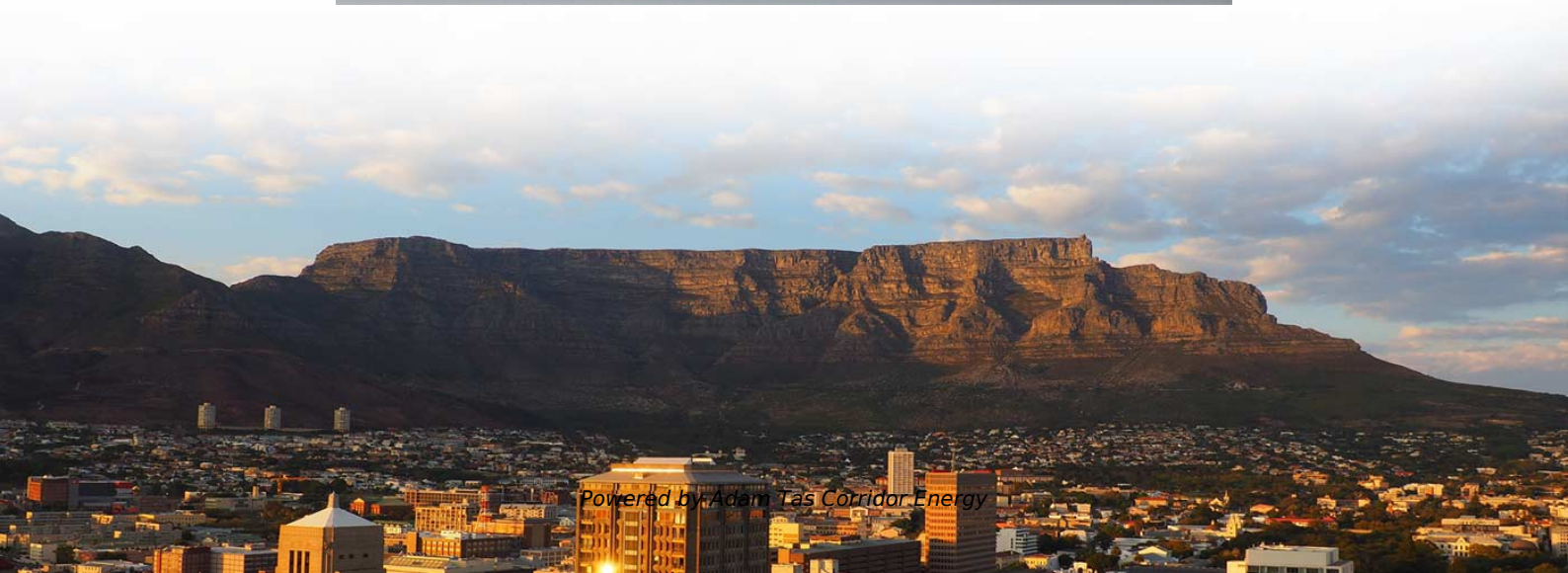




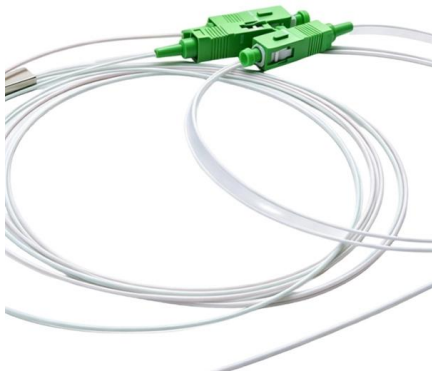
Adam Tas Corridor Energy

Installation of a Second-Level Small Mobile Distribution Box





Installation of a Second-Level Small Mobile Distribution Box



Distribution switchboards

Distribution switchboards, including the Main LV Switchboard (MLVS), are critical to the dependability of an electrical installation. They must comply with well-defined standards governing

How to Add a Second Breaker Box (Subpanel)

A second breaker box, more commonly referred to as a subpanel, functions as a power distribution point downstream from your main electrical service panel. Its purpose is to take a single,



How to determine the size, installation method and

For smaller distribution boxes, wood bricks can also be embedded at the installation place (according to the installation holes at the four corners of the distribution box

Distribution Box Installation: Advanced Techniques

Distribution Box Installation: Advanced Techniques. The installation of a distribution box



is explored in detail, highlighting advanced techniques for achieving a professional and



What is the Ideal Installation Height for a Distribution Box

Install a distribution box at 4.5 to 5.5 feet high for safety, accessibility, and compliance. This height ensures easy use and protection from hazards.



2 LV distribution networks

2 LV distribution networks - Electrical Installation Guide, Schneider Electric, 2008 Links are inserted in such a way that distributors form radial circuits from the substation with open-ended branches (see



How To Installation Distribution Box: Efficient Guide

How To Installation Distribution Box: Efficient Guide Electricity is key to our modern comforts in Singapore. Yet, we often overlook the safety it brings. The distribution box is a silent protector in your



Understanding Distribution Boxes: A Comprehensive Guide

The right distribution box depends on the installation environment, protection level, load requirements, and application type. By understanding the



How To Install A Second Circuit Breaker Box From The

When you run out of space in your electrical service panel (also called a breaker box), you have two choices: have a professional upgrade the service

Mobile Substations : features and applications

As highlighted, mobile substations do provide immense benefits for the power supply and distribution companies. In most cases, the mobile substation is open for easy



Requirements And Specifications For Installation Of

The installation requirements and specifications of Distribution box involve many aspects, including site selection, fixing method, wiring specifications



How to Install a Distribution Box--A Comprehensive

Before starting the installation, finding a proper place for putting the distribution box is crucial, because it largely decides the safety and convenience



MNS® Low Voltage Distribution Board and Power Cabinet

In designing the distribution board and power cabinet, ABB drew upon its wealth of experience with low-voltage switchgear and placed a strong emphasis on the product's ease of installation, operations,



Mobile Substations: A Comprehensive Guide , Electrical4U

Mobile substations are portable power distribution systems that can be quickly set up in different locations. They provide temporary or emergency





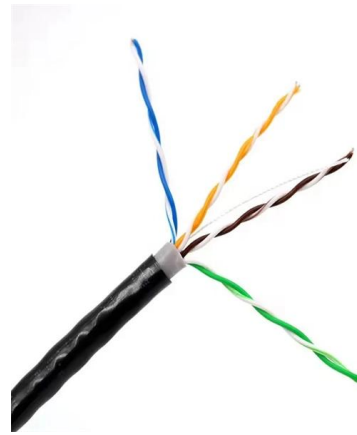
Summary of key points for construction and installation of distribution

The construction and installation points of distribution boxes and switch boxes are summarized as follows: 1. Select qualified products that meet national standards and safety requirements.



Small distribution box installation steps

The steps to install a small distribution box include selecting a suitable location, installing the base, placing the distribution box, connecting the



Step-by-Step Guide to Install MCB Distribution Box

Learn how to safely install an MCB distribution box with this comprehensive guide. Step-by-step instructions to ensure correct installation.



How to Install a Mini Sub Panel for a Detached Building

A mini sub panel, also known as a secondary load center, is an electrical distribution box installed downstream from the main service panel to manage power for a specific zone or remote

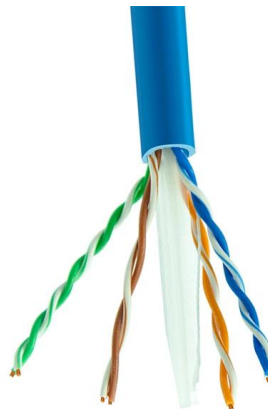


How to confirm whether the installation location of the

Before installation, an on-site inspection should be conducted to confirm whether the installation location of the box meets the above

Installation process of distribution box

3. The distribution box shall be embedded in the installation, and the panel after installation shall be flat with the wall. 4. After the cabinet (panel) adjustment is



Low-voltage distribution networks

In cities and large towns, standardized LV distribution cables form a network through link boxes. Some links are removed, so that each (fused) distributor leaving a substation forms a branched open-ended



Basics in low voltage distribution equipment

Low voltage distribution equipment typically operates at less than 600 volts; in contrast, medium voltage equipment affords a wider range of 600 to 38,000 volts. This paper provides a basic overview of the



Requirements And Specifications For Installation Of

In flammable and explosive environments, explosion-proof distribution boxes should be selected and explosion-proof treatment should be carried out.

Mobile Distribution Boxes , DISTRO-DIRECT

mobile distribution boxes Users in over 68 countries worldwide appreciate the ruggedness, dependability, design and lifespan of our power distribution boxes.



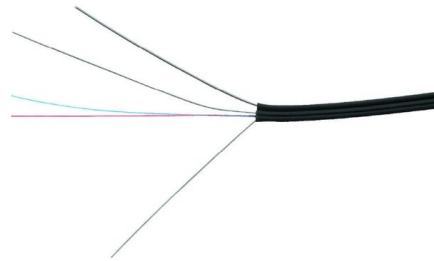
Electrical installation handbook

This electrical installation handbook, however, aims to supply, in a single document, tables for the quick definition of the main parameters of the components of an electrical plant and for the selection of the



Size determination, installation method and wiring mode

However, many electrical beginners don't know how to install and connect the distribution box. Next, let's introduce the wiring mode, installation method and



How to determine the size, installation method and

6) The electrical appliances in the distribution box shall be first installed on the non-metal or wood insulation electrical appliance mounting plate, and then fastened in

The Complete Guide to Distribution Box: Installation, Types & More

Proper installation of a distribution box requires careful planning and adherence to electrical codes. While major installations should always involve qualified electricians, understanding





Contact Us

For datasheets, pricing, or custom telecom energy solutions, please visit:
<https://www.koskolong.co.za>