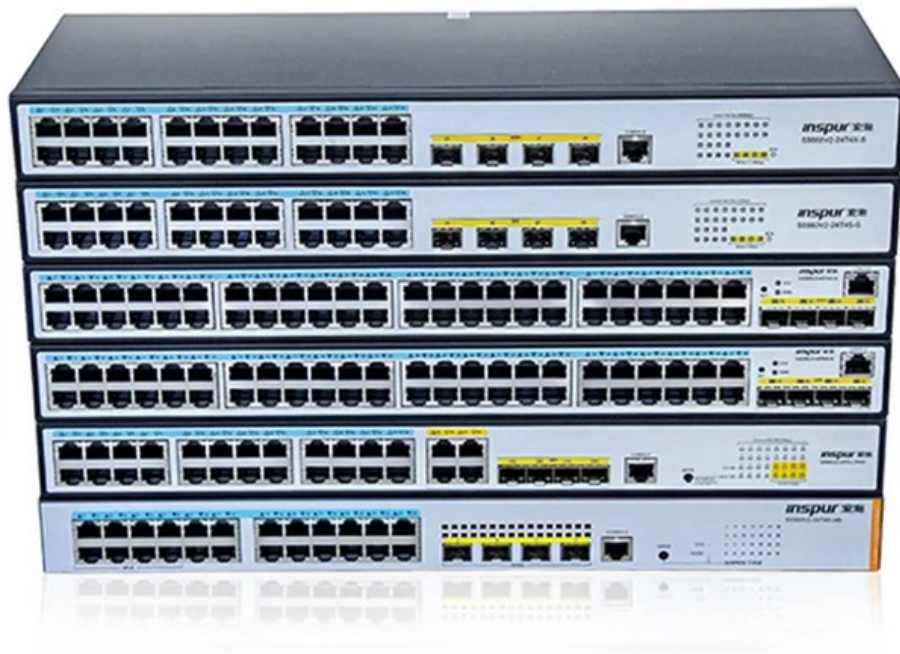




Adam Tas Corridor Energy

Insufficient fixing bolts for explosion-proof distribution box





Insufficient fixing bolts for explosion-proof distribution box

IF 1665

Due to the potential weight of the cover, it must be supported prior to removal of hinge bolts. This can either be achieved by a second installer holding the cover or by utilizing a hoist.



How to maintain explosion proof distribution panel and

Number each explosion proof distribution panel and control station, and assign the operation section team to contract, and require the operation section



Installation Precautions for Explosion-Proof Junction Boxes

Explosion-proof junction boxes have become a familiar and essential distribution equipment in modern industrial settings, primarily used for



How to solve the problem of insufficient sealing of explosion-proof

Sealing performance is degraded. In order to



solve this problem, we need to check and replace the sealing ring in time, and at the same time strengthen the fixing strength of the



Motor protection controller

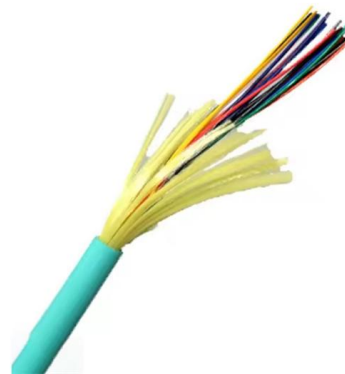


Inspection and Maintenance of Explosion-Proof Equipment

During the maintenance of explosion-proof junction box, check the proper fastening and tightening of high-tensile strength (HTS) bolts. If such bolt is missing, it should be replaced with

How to Wire an Explosion-Proof Distribution Box and

Explosion-proof distribution boxes are designed to meet strict safety standards, and unauthorized modifications can compromise their functionality. Do not alter or



Requirements And Specifications For Installation Of

The fixing method should be firm and reliable to avoid movement or tilting of the box due to vibration or collision. It is recommended to use a suitable



Structural requirements of explosion-proof distribution box and

1. The outer surface of the Distribution Box shell is coated with silver-gray powder paint. The explosion-proof joint surface of the explosion-proof distribution box is coated with 204-1



Explosion Proof Power Distribution Boxes

Flameproof and explosion proof, these power overhaul distribution boxes are suitable for use in hazardous areas. Specs: Ex mark: Ex de IIC T4 Gb DIP A21 TA,T4



Explosion Proof Enclosures

Ex-Proof & Flameproof Junction Boxes & Enclosures Supermec ATEX Junction Box & Enclosures are designed to satisfy most of our clients' requirements for CONTROL explosion-proof and flameproof





Custom CZ1290 Explosion-proof distribution boxes

CZ1290 Explosion-proof distribution boxes (mobile power branch connection socket box)
Products Features: Besides the present designation for the full plastic

Specification for Maintenance of Explosion-Proof Distribution Boxes

As industrialization accelerates, enterprises are increasingly emphasizing the importance of electrical explosion-proof measures. In industrial production, the use of explosion-proof distribution



Explosion-Proof Distribution Box , Product Center

Explosion-proof distribution boxes are designed to safely control and distribute electrical power in hazardous environments, preventing ignition risks.

Explosion Proof Illumination Distribution Boxes (With

Flameproof and explosion proof, these power overhaul distribution boxes are suitable for use in hazardous areas. Specs: Ex mark: Ex de IIC T4 Gb DIP A21 TA,T4





Explosion-Proof Distribution Boxes: Special Installation Requirements

Life-Saving Insight: The California blast investigation revealed standard explosion-proof boxes were installed but with Class II sealing compounds in a Class I environment - allowing propane vapors to

Explosion proof distribution box standards and installation issues

Consequences: the wiring in the lighting explosion-proof distribution box (board) is messy, and the second board in the box presses against the pipe opening, which affects the entry of wires into the box.



Installation and Wiring of High and Low Voltage Explosion-Proof

Installation of High and Low Voltage Explosion-Proof Distribution Boxes: Before installation, the control room should be ready, with all interior work completed, and the environment

Explosion-Proof Distribution Box Faults and Solutions

Many people do not know how to solve problems when an explosion-proof distribution box malfunctions. Below, I will discuss some common faults and

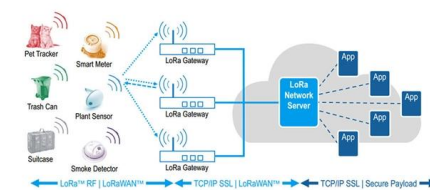


Explosion-Proof Electrical Equipment Fastener

For explosion-proof equipment (explosion-proof cheerful pressure cabinet, explosion-proof analysis cabin, explosion-proof distribution box),

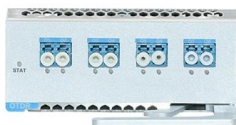
How to solve the problem of insufficient sealing of explosion-proof

In order to solve this problem, we need to check and replace the sealing ring in time, and at the same time strengthen the fixing strength of the compression nut to maintain the sealing



Explosion Proof Distribution Box & Electrical Enclosures

Durable Hexlon Explosion Proof Distribution Boxes and Electrical Enclosures, IECEx and ATEX certified for Zone 1 and Zone 2.





Explosion Proof Basics on Removable Covers and Fasteners

All cover fixing bolts must be fitted and fastened down " Spanner tight" at all times, wherever the equipment could possibly be energised, even during testing.



Inspection and Maintenance of Explosion-Proof Equipment

of explosion-proof junction box, check the proper fastening and tightening of high-tensile strength (HTS) bolts. If such bolt is missing, it should be replaced with identical size.



Explosion Proof Box & Cabinet

Product features: The explosion-proof control cabinet (box) can install various instruments inside. Low-voltage electrical appliances, frequency converters, PLCs, soft starters, and computer systems can

Explosion proof Power Distribution Panel Box

Power Distribution panel box - Hazardous locations for explosive gas mixtures: Zone 1 and Zone 2. Explosive gas mixtures: Class IIA, IIB, and IIC.



Structural requirements of explosion-proof distribution box and

Explosion-proof power distribution shall be provided with internal and external grounding screws. The size of the internal grounding screw shall not be less than M6, and the size of the



Principles for Connecting Explosion-Proof Distribution

Explosion-proof systems, especially in hazardous environments, demand a meticulous approach to ensure safety and compliance with regulations. This

Explosion-proof Distribution Box

China Explosion-proof Distribution Box catalog of Exd Explosion Prevention Exe Aluminum Alloy Junction Box Explosion-Proof Threading Straight Box Ex Seal Wire Box, Explosion-Proof Type a





Explosion Proof Distribution box-

Explosion Proof Distribution box is applicable to explosive gas mixture Hazardous locations: Zone 1, Zone 2, Zone 20, Zone 21, Zone 22;explosive gas mixture: II A, II B, II C level;the temperature

Contact Us

For datasheets, pricing, or custom telecom energy solutions, please visit:
<https://www.koskolong.co.za>