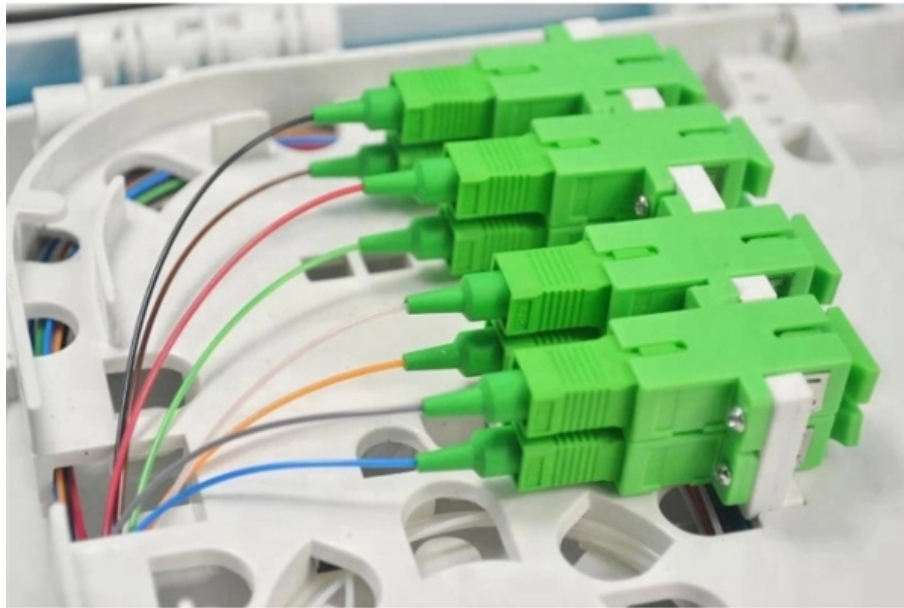




Adam Tas Corridor Energy

Integrated Data Center Cold Aisle





Overview

Containment systems work by enclosing either the cold aisle or the hot aisle between rows of server racks. When implemented correctly, they improve efficiency, reduce energy consumption, extend equipment life, and enhance overall reliability. It's not a product category like a switch or UPS; it's an infrastructure-level airflow management strategy.



Integrated Data Center Cold Aisle



Container data center 40ft

Most 40ft container data centers utilize advanced HVAC systems, including precision air conditioning, variable-speed fans, and hot/cold aisle containment. Emerging models incorporate liquid immersion

Vertiv(TM) SmartRow(TM) Row-Based Data Center with Integrated Fire

The Vertiv(TM) SmartRow(TM) 2 SR2N04020PAA2 is a 20kW, complete, row-based Edge data center solution designed for fast and efficient deployment. The unit includes (4) IT rack enclosures (1100mm



Integrated Modular Data Center Infrastructure Hot Aisle Cold Aisle

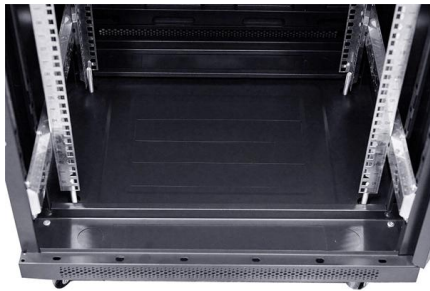
Key attributes products status Stock cabinet standard IEC297-2 size 42u.18u.24u place of origin China material SPCC Cold Rolled Steel brand name lepin Product Name network cabinet Capacity 15u-42u

Data center

Utah Data Center (2013) A data center is a facility used to house computer systems and associated components, such as



telecommunications and storage systems.

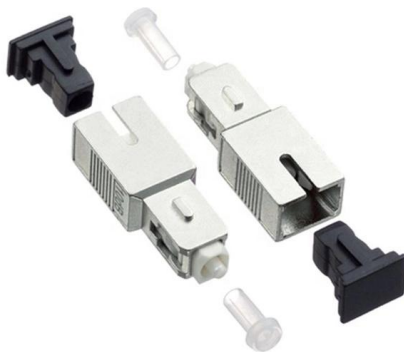


Cold & Hot Aisle Containment For Data Center Efficiency

Learn how cold and hot aisle containment improves airflow, reduces energy use, and boosts reliability in data centers. Backed by CFD insights from

#ribert #rittal #datacenter #it #service #innovation

There, we updated a total of 500 PDU rails and equipped them with intelligent RGB light strips. ? The light strips are integrated directly into the PDUs in the cold aisle.



Data Center Cooling , Schneider Electric United States

Data center cooling technologies are designed to transport heat energy from the IT environment to the outside atmosphere. We provide integrated cooling systems



Cold Aisle Containment in Data Centers , Subzero

Minimize your data center's footprint, establish optimal operating efficiencies and save money with cold aisle containment. Learn more here!



How to Choose Data Center Aisle Containment: Hot vs Cold Guide

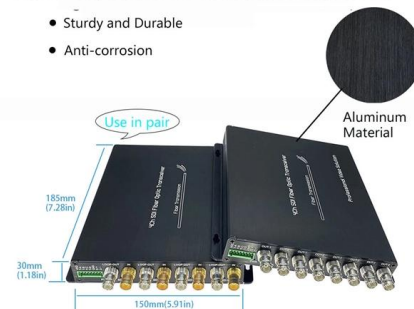
A practical, no-fluff guide to data center aisle containment--comparing hot and cold approaches, key specs to evaluate, real-world trade-offs, and how to decide based on your

Optimizing Data Center Cooling for Energy Efficiency

Explore the benefits of optimizing data center cooling systems and how monitoring can improve efficiency and sustainability.

High Quality Aluminum Housing with Compact Size

- Sturdy and Durable
- Anti-corrosion



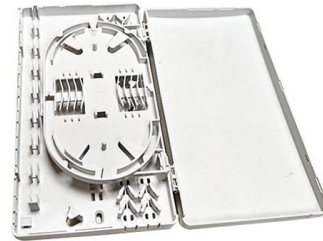
Micro Modular Data Center with Cooling and Energy Solutions

Efficient Micro Modular Data Center featuring integrated cooling, energy solutions, and cold aisle containment for optimal performance and scalability.



What are hot and cold aisles in the data center?

In its simplest form, hot/cold aisle data center design involves lining



Data Center Aisle Containment: Hot vs. Cold Aisle , Polargy

In a typical data center, racks are arranged in alternating hot and cold aisles. Cold air is delivered to the front of the racks, where servers pull it in to stay cool, and the hot air exits from the back of the racks

Modular Data Center with Hot Aisle Containment & Double-Row

Modular Data Center with Hot Aisle Containment and Double-Row Cabinets featuring modular design, 1100kg static payload, and intelligent fire control for efficient and secure data management.





VESDA Air Sampling Detection for Data Centers: Hot Aisle, Cold Aisle

Complete VESDA guide for data centers covering hot aisle, cold aisle, underfloor, above-ceiling detection, design, code, and layout.

Hot Aisle vs Cold Aisle Containment Explained (Data Center Cooling)

Hot aisle and cold aisle containment are foundational concepts in data center design. When implemented correctly, they improve efficiency, reduce energy consumption, extend



Numerical analysis of the individual and combined effects of the aisle

By applying high-fidelity CFD simulations to a real-scale system comprising 70 server racks and an underfloor air distribution configuration, the study quantitatively compares three types of

Coolnet Micro Modular Data Center with Cold Aisle Containment

Coolnet Micro Modular Data Center offers modular design, intelligent fire control, and customizable size for efficient and scalable data center solutions.



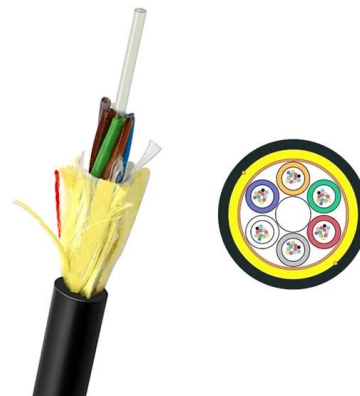
Vertiv(TM) SmartRow(TM) 2 Row-Based Data Center with Integrated Fire

The Vertiv(TM) SmartRow(TM) 2 SR2N04020FAA2 is a 20kW, complete, row-based Edge data center solution designed for fast and efficient deployment. The unit includes (4) IT rack enclosures (1100mm



Innovative Data Center Cooling Solutions from Daikin, Nortek, and

Physical airflow management is critical to efficient data center cooling. Daikin and Nortek provide solutions that support hot aisle and cold aisle containment strategies, which separate hot exhaust air



Prefabricated Modular Data Center with Integrated Systems

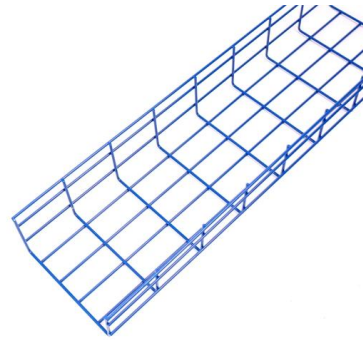
Integrated prefabricated modular data center featuring power cooling, UPS monitoring, and cold/hot aisle containment for efficient and secure operations.





Aisle Containment Systems From EDP Europe , Data

EDP Cold Aisle Containment (CAC) is designed to isolate the cold aisle and prevent hot server air from mixing with the cold supply air. CAC ensures that cold air is



Hot Aisle Containment: The Coolest Guide for 2025

Hot aisle containment data centers are engineered to optimize cooling efficiency and minimize energy use by effectively separating hot and cold air. By

NVIDIA HGX Platform: Data Center Physical

Learn the strict physical requirements for deploying NVIDIA HGX platforms from Hopper to Blackwell. Covers power (10-140 kW/rack), liquid cooling, rack design,



A DEEP DIVE INTO THE WORLD OF HOT & COLD AISLE

THE GREEN GRID: ASHRAE Data Center Cooling Guidelines: Developed in collaboration with ASHRAE, this document provides best practices for data center cooling, including hot and cold aisle



Contact Us

For datasheets, pricing, or custom telecom energy solutions, please visit:
<https://www.koskolong.co.za>