



**Adam Tas Corridor Energy**

# **Introduction to 32-Port KVM Switch**





## Introduction to 32-Port KVM Switch

---

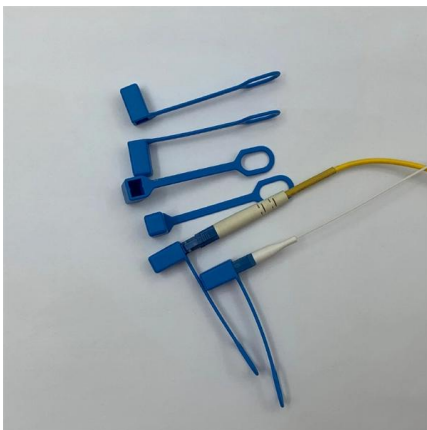
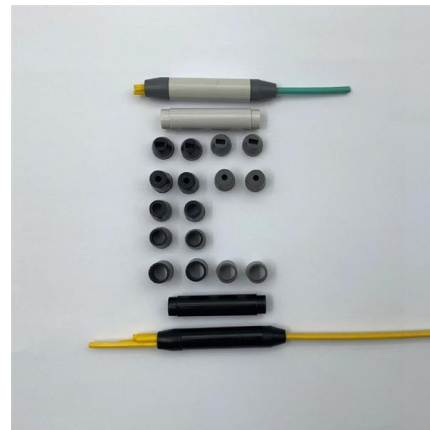


### 32-Port KVM-Switches

High port density. Panel Array Mode(TM) - monitors all ports in a grid display (both local and remote screens). Integrated with ATEN CC2000 Centralized

### ATEN KN Series 32-Port KVM over IP Switch with Dual

ATEN KN4132VA Overview The KN Series 32-Port KVM over IP Switch from ATEN supports HD resolution video, FIPS 140-2 with level 1 security standards, and



### Rack 19" KVM 32-port switch via Cat.6 UTP cable

32-port KVM switch, which uses Cat.6 UTP cable for interconnecting the switch with computers. Control console based on VGA port (HD15 female), USB keyboard port (type A female) and USB mouse port

### The modular LINDY KVM Switch CAT-32 IP

The KVM Switch CAT-32 IP provides 32 Cat.5/6 KVM server ports supporting both USB or PS/2



keyboard and mouse connections via dedicated USB or PS/2 Cat.5 Computer Modules.



### 32-Port Multi-Interface (DisplayPort, HDMI, DVI, VGA)

The KH1532A KVM switches are control units that allow IT administrators to access and control multiple computers from a single PS/2 or USB KVM console

### 32-Port KVM-Switches

32-Port CAT5 KVM-Switch, Aten KH1532A Product No.: KH1532A Shippingtime: in stock (1 up to 2 days) (abroad may vary)



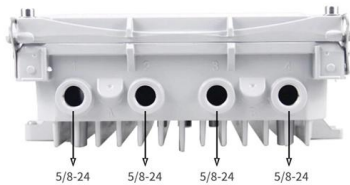
### 32 Port USB CAT5 LCD KVM Switch with 17" Display

Kinan LC1732 LCD KVM switch designed with a 17" LCD display and USB and Cat5 ports, allows users to manage up to 32 computers effortlessly.



### **DKX3-832**

The DKX3-832 Dominion KX III is an enterprise-class KVM-over IP switch that provides 8 users with BIOS-level remote management of 32 servers in a single



### **UNIMUX-HD4K-32**

The UNIMUX-HD4K-32 HDMI USB 32-Port KVM Switch allows a user to control up to 32 Ultra-HD 4Kx2K 30Hz USB computers with one USB keyboard, USB mouse

### **32-port KVM over IP switch**

32-port KVM over IP switch with 1 remote + one local user access (2 concurrent users total) o High port density - RJ-45 connectors and CAT-5e/6 dongles for up



### **32-Port KVM over IP Switches**

Utilizing advanced security and regardless of operating system, these KVM Over IP products allow you to remotely control all your servers/CPU's - including pre-boot



### **ATEN KN4032VB , 4-User, 32-Port KVM over IP Switch**

32-port KVM over IP switch with 4 remote user access (and 1 shared local access) o High port density - RJ-45 connectors and CAT-5e/6 dongles for up to 32 ports in 1U housingo A



### **1-Local/2-Remote Access 32-Port Multi-Interface Cat 5**

The KN series KVM over IP switch provides local console and remote over IP access for users to monitor and access their entire data center over a network.

### **DKX432**

The Dominion KX switch connects to each CIM and provides KVM-over-IP capabilities for remote access, plus simultaneous local, at-the-rack access and control. Each CIM connects to the KVM



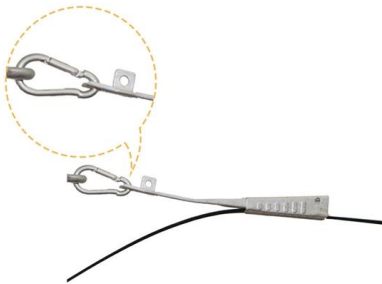


### **32-Port Cat5 LCD KVM over IP Switch 1-Local/2**

HT5832 is a 32-port KVM over IP switch designed with an 18.5" LCD monitor, a 99-key keyboard, and a touch pad, allowing users to control up to 32 servers.

### **17.3? 32 Port CAT5 LCD KVM over IP Switch 1-Local / 1**

With an ideal design, Kinan's HT2732 Cat5 LCD KVM over IP Switch is a great KVM solution to control up to 32 computers over IP. Boasting a space-saving design,



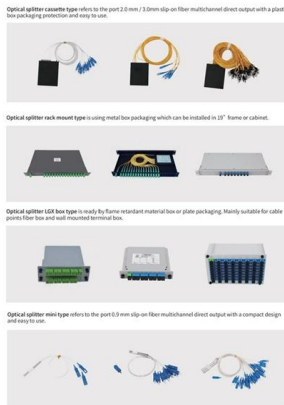
### **32-Port CAT5 KVM-Switch, Aten KH1532A**

32-Port KVM-Switch over CAT cable to connect server via optional CPU adapters with different interfaces, Aten KH1532A The KH1532A KVM switches are control

### **KN4132**

The Aten KN4132 is a 32 Port 5-user (4-Remote, 1-Local) CAT5 IP KVM. The new generation of KVM over the NET switches allows local and remote operators to monitor and access the entire enterprise





## ATEN KH1532A , 32-port CAT-5 KVM switch

32-port CAT-5 KVM switch o One KVM console controls 32 directly connected computers o By daisy chaining up to 31 additional KH1532A switches, as many as

## 32-Port KVM-Switches

Absolute Flexibilität mit 4 Usern: 2 x IP, 1 x CAT plus 1 x lokal an bis zu 32 Server. Alle User können zeitgleich auf verschiedene Server zugreifen. Die Bedienung ist über Java-freie Clients möglich. mit



## 1U 17" 32 Port CAT5 LCD KVM over IP Switch 1-Local / 2-Remote

Featuring an integrated 17" LCD monitor, keyboard, and touchpad in a 1U rack-mountable housing, AZE's Cat5 LCD KVM over IP Switch is a control unit that allows 2 remote users secure access to 32



## 32-Port KVM over IP OmniBus Gateway

The All-digital KVM over IP OmniBus Gateway allows real-time, up to 32 concurrent remote user access to any connected servers regardless where and when the



### **32-Port Cat5e KVM Switch, IP, 1 Remote, 1 Local,**

Two users (one remote, one local) can control up to 32 computers or servers at



### **ATEN KN1132VB , 32-Port KVM over IP Switch w/ 1 local & 1 Remote**

32-port KVM over IP switch with 1 remote + one local user access (2 concurrent users total) o High port density - RJ-45 connectors and CAT-5e/6 dongles for up to 32 ports



### **1-Local/1-Remote Access 32-Port Multi-Interface Cat 5**

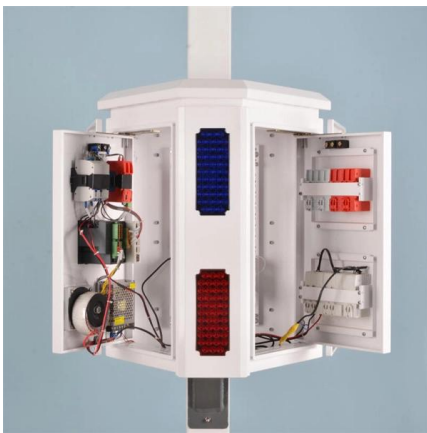
The KVM switch offers several out-of-band access methods, such as a direct console connection from a local computer, a USB console connection from a laptop, a





## 32-Port KVM over IP OmniBus Gateway - TAA

All KVM Ports from both the KVM DigiProcessor or KVM over IP OmniBus Gateway are equipped with advanced high-voltage isolation and noise filtering that help



## 17.3" 32 Port CAT5 LCD KVM over IP Switch 1-Local / 1

Kinan HT2732 IP KVM switch features its 17.3" screen and 32 Cat5 ports, allowing 1 local and 1 remote user to control up to 32 servers via the Internet.

## Types of KVM Switches Explained: How to Choose the Right TESmart

A single-monitor office KVM, a dual-monitor gaming KVM, a rackmount-style 16-port KVM, and a KVM compatible with Thunderbolt(TM) 4 laptops are built for different problems. This guide



## 32-Port KVM over IP Switches

32 port, 1 IP, 1 extended, and 1 local user KVM Over Switch Support DVI-USB, VGA-USB & VGA-PS/2 server interface Enhanced Cat6 cable management with



## Contact Us

---

For datasheets, pricing, or custom telecom energy solutions, please visit:  
<https://www.koskolong.co.za>