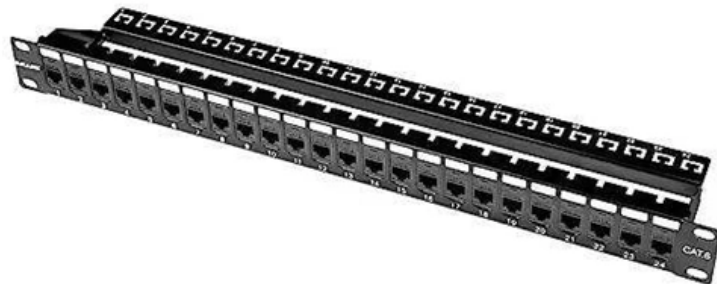




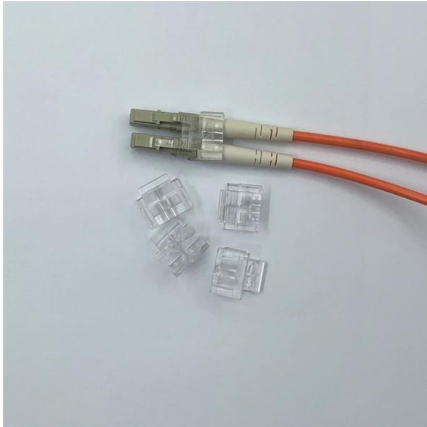
Adam Tas Corridor Energy

Iranian Network Core Switch Setup





Iranian Network Core Switch Setup



Features and Applications of Core Switches

With high performance, large capacity, and high reliability, Core Switches offer a wide range of features and play a crucial role in enterprise networks, data centers, and large-scale

Core Switch Explained: Key Functions and Benefits

Core switches sit at the heart of a network's structure. In smaller networks, you usually find one core switch, sometimes two for backup. They are essential for moving data through the



Core network guidance for Windows Server , Microsoft Learn

Introduction to the Windows Server Core Network
A core network is a collection of network hardware, devices, and software that provides the fundamental services for your organization's

Top 11 Network Switch Manufacturers in Iran (2026) , ensun

When exploring the network switch industry in Iran, several key considerations are essential for



informed decision-making. Understanding the regulatory environment is crucial, as the Iranian market



From standard 1U to 8U sizes to fully customized Non-standard enclosures.



What Is a Core Switch in Networking?

What Is a Core Switch in Networking? Understanding the Backbone of Your Network A core switch in networking serves as the high-capacity

What Is a Core Switch?

A core switch is the backbone of a large-scale network, designed to handle massive volumes of traffic with ultra-low latency and maximum reliability. Sitting at the top of the hierarchical model, core



Core switch definition - Glossary , NordVPN

Structure: In general network setups, there are three tiers: access, distribution, and core. The core switch resides at the top. It links to distribution switches and facilitates rapid data transfer throughout



What is a Core Switch

Network aggregation switches, on the other hand, connect many networks over a single link. As a result, it increases the network's bandwidth. This article explained the question of what is



Data Center Network Switch Design

By following these design and deployment strategies, you can achieve a high-performance, highly available, and secure network architecture that meets the needs of your

Replacing one core switch with two new core switches

I will have to replace our old core Cisco switch C4506-E with two new core switches C9500 that will be located in two different server rooms. Currently there is one server room and our



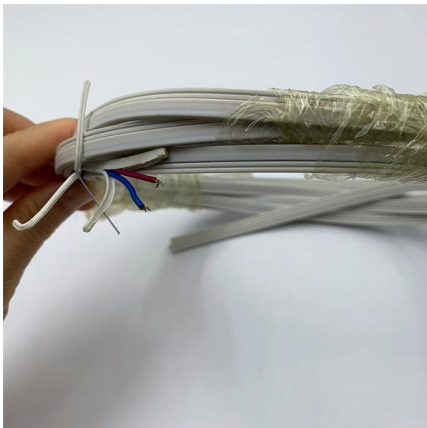
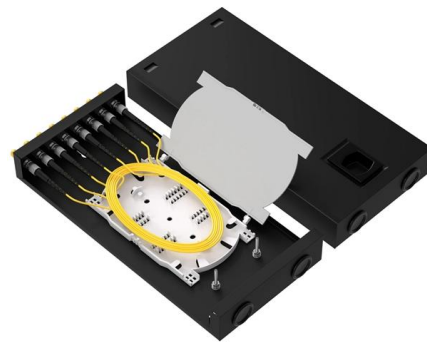
Configuring the Core Switch

Configuring the Core Switch Context In this scenario, IP addresses of the interfaces connecting the core switch to the BRASs and firewalls and OSPF need to be configured on the core



Network Switch Components and Technical Analysis

Within network architecture, Network Switches are classified into different roles, including Access Switches and Core Switches, each representing different layers of network devices.



Understanding Core Switch: What It Is and How to

In the realm of system networking, three key types of switches are frequently mentioned: access switches, aggregation switches, and core switches.

Understanding the Core Switch: Key Differences and Uses

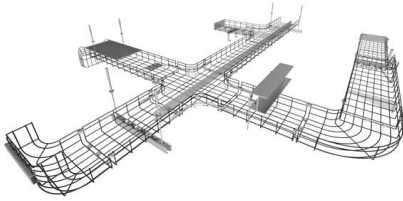
Explore the core switch's role as the backbone of your network. Discover key differences, uses, and insights into layer 3 core switch technology.





Iran Threat Overview and Advisories

Iranian government-affiliated actors routinely target poorly secured U.S. networks and internet-connected devices. Recent Iranian state-sponsored activity includes



How Iran's Government Shut Off the Internet , WIRED

After years of centralizing internet control, Iran pulled the plug on connectivity for nearly all of its citizens.



Configuring Interconnection Interfaces and Routes for the Core Switch

Traffic passing through the BRAS is classified into education network traffic, ISP1 traffic, and ISP2 traffic. Therefore, you are advised to configure corresponding VPN instances on the core switch to isolate



NetApp HCI Network Setup Guide

This network architecture includes multiple pairs of ToR switches (leafs) connected in a full mesh to the spine switch layer, which uplinks to the data center core.



Configuring the Core Switch

In this scenario, IP addresses of the interfaces connecting the core switch to the BRASs and firewalls and OSPF need to be configured on the core switch, so as to implement connectivity



Supply, Installation, and Configuration of Core Switch

Configuration Configure the Switches to work seamlessly with the FortiGate firewall. Configure VLANs, port settings, and any other necessary configurations. Integration with Existing Network Topology



Top 11 Network Switch Manufacturers in Iran (2026) , ensun

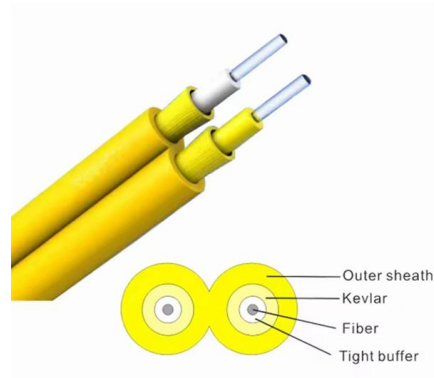
Information about Network Switch in Iran When exploring the network switch industry in Iran, several key considerations are essential for informed decision-making.





Core Switch vs. Distribution Switch vs. Access Switch

Comprehensive guide to Core, Distribution, and Access Switches. Roles in the network and important parameters explained.



What is a Core Switch?

What is a Core Switch? A Deep Dive A core switch is the backbone of a network, providing high-speed switching for data packets between different network segments; essentially, it's

Advice on core switch setup : r/sysadmin

Look at the 9300 series. They're surprisingly badass and have full FEX support. We recently deployed a new core using a pair of 9372px in vPC with a bunch of 2248TP-E FEXes and some other switches



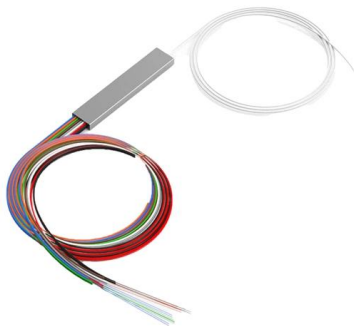
Core layer , FortiSwitch 7.6.0 , Fortinet Document Library

With 8x100-GbE QSFP28 slots per FortiGate unit, it provides enough capacity to directly connect with 2x100-GbE ports to each of the two core FortiSwitch units at a nonstop forwarding capacity of up to



SME Network Solution Typical Configuration Examples

"Gateway + Switch + AP" Networking: Local Entire-Network Deployment (EasyWeb) "Gateway (S380) +Core Switch +Access Switch +AP" Networking: Huawei eKit Cloud Management



Configuring the Core Switch to Be Managed by the Controller (Switch

Configure the core switch to communicate with iMaster NCE-Campus in NETCONF over SSH Call Home mode. Configure the management VLAN on the core switch to be used for

Core Switch vs. Distribution Switch vs. Access Switch

Core Switch vs. Distribution Switch vs. Access Switch: Understand Their Roles in Ethernet Networks Ethernet networks are growing and becoming more complex,





Contact Us

For datasheets, pricing, or custom telecom energy solutions, please visit:
<https://www.koskolong.co.za>