



Adam Tas Corridor Energy

Ireland Inquiry Optical Line Terminal 25G





Ireland Inquiry Optical Line Terminal 25G



25G PON

25G PON leads the way for fiber evolution As fiber broadband networks become the infrastructure to connect everything and everyone, the

An In-depth Guide to 25G SFP28 Optical Transceiver

Discover the advantages, specifications, and applications of 25G optical transceiver solutions--for high-speed data center, enterprise, and telecom networks.



SFP28 25G LR Transceiver: Complete Guide for 25G Ethernet

As 25G Ethernet becomes a key building block for modern data centers and enterprise networks, the SFP28 25G LR transceiver has emerged as a reliable solution for long-reach, high-speed optical

Brocade 25GbE LR SFP+ Optimized, Certified Ethernet Optical

The Brocade® 25GbE long reach (LR) SFP+, part of the Brocade family of optical transceivers, is



optimized for Brocade products with Ethernet connectivity. This optical transceiver provides state-of



GPON OLT Basics and Beyond: A Comprehensive

In today's rapidly evolving optical networking landscape, GPON (Gigabit Passive Optical Network) technology stands as the mainstream solution



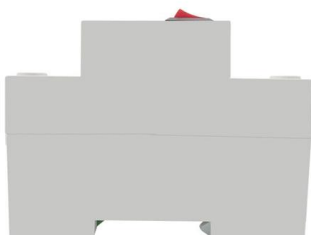
25G PON ONT

Focused on broadband-access and wireless-coverage products. For broadband access, we have already mass-produced all mainstream, standard-rate optical network terminals in accordance with



Arista 25G Transceivers and Cables

Arista supports a range of 25G copper cables and optical transceivers compliant to IEEE standards and industry MSAs. Arista's 25G connectivity solutions include copper cables, Active Optical Cables





6COM 25G Transceivers and Cables FAQs

"Explore the 6COM 25G Transceivers and Cables FAQs, covering SFP28 modules, DACs, AOCs, network compatibility, technical features, and the benefits of 25G



25/50Gbps Passive Optical Network (PON)

WDM PON such as 25G-6Ch-CWDM, 25G-12 Ch-MWDM, 25G-12 Ch-LWDM, 25G-20 Ch-DWDM PtP links in O-band and 25G WDM PtP PON links in C/L band and 25Gb/s new line rate in C/ L Band

Guide to Optical Line Terminal (OLT) Classifications:

In modern communication networks, optical line terminal (OLT) is the core device to realize point-to-multipoint (P2MP) in passive optical network (PON)



25G Optics: Building blocks for the modern fiber network

SFP28 25G optics are building tomorrow's networks today Driven by the rocket-propelled rise in demand for data, cellular, and video content for both business and consumer usages, many network



ITU-T Rec. L.25 (01/2015) Optical fibre cable network maintenance

3.2.8 optical fibre identification: A technique for fibre identification by measuring certain optical characteristics to avoid incorrect cutting and/or connection of an optical fibre at a worksite. 3.2.9



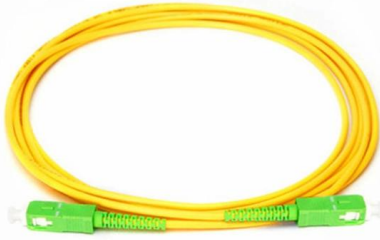
Broadband Ireland Services and Nationwide Coverage

Explore Ireland's nationwide fibre rollout, high-speed broadband options and coverage updates. Learn how to connect your home or business effectively.

What Is an OLT? , Definition, Function & Role in GPON

What is an OLT? Definition: An Optical Line Terminal (OLT), also called an Optical Line Termination, is a network device located at the service





Cisco 25G Transceivers and Cables Enable 25 Gigabit

SFP-25G-SR-S transceiver are an ideal solution for those same data center applications that require up to 100 meters over OM4 fiber or 70 meters over OM3.

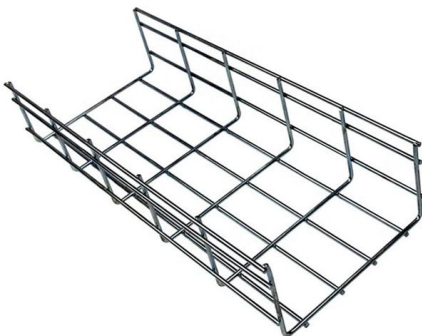
Everything You Need to Know about 25G Optics

The 25G SFP28 optical module is an optical module with a transmission rate of 25Gbps. It is a new Ethernet standard with many advantages over 10G.



Ogi Become First UK ISP to Deploy Nokia's 25Gbps Full

Phil Siveter, CEO of UK and Ireland at Nokia, said: "We are proud to have been selected by Ogi as one of the first UK deployments of our 25G PON technology."



Decoding 25G Ethernet And Its Optics , by Emily Twain

Decoding 25G Ethernet And Its Optics Most of us may be quite familiar with 10G, 40G and 100G Ethernet networks, but we know little about 25G.



25GBASE-LR Application Overview

The TIA FOTC provides a comprehensive overview of 25GBASE-LR capabilities and single-mode optical fiber channel characteristics.

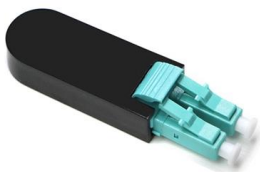
25GS-PON Specification 25 Gigabit Symmetric Passive Optical

The PMD requirements for the 25G signals of 25GS-PON are contained in clause 141 of IEEE Std 802.3caTM 2020, Draft Standard for Ethernet, Amendment: Physical Layer Specifications and



You Should Know About 25G Transceivers and Cables

You Should Know About 25G Transceivers and Cables FAQs Q1: What is SFP28? A: SFP28 is the standard form factor of 25G optical modules. Its





Nokia ONT Y-140Y-A 25GPON

A future-ready optical network terminal designed to deliver ultra-fast broadband to the home. Its sleek, minimalist form factor integrates seamlessly into modern home environments while housing



Demystifying SFP28: The Essential Guide to 25G

SFP28 is a 25G transceiver module for fast, efficient data transfer in modern networks, offering high speed, compatibility, and energy savings.



25G Ethernet Overhauling 40G Ethernet

The 25G single lane architecture supported re-use of the proven 1G and 10G SFP form factor pluggable modules for copper or fiber links. The 25G

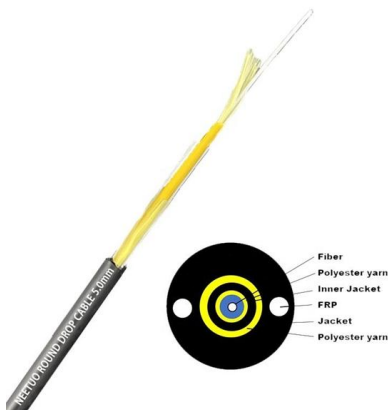
25GBASE IEEE 802.3by: The Single-Lane 25 Gb Ethernet Standard

Explore the IEEE 802.3by standard for 25GBASE Ethernet. Learn specs, media types, application scenarios, and how LINK-PP SFP28 modules support reliable 25GbE networks.



Pluggable Transceivers Installation Guide

The LR SFP28 module provides a 25 Gb optical Ethernet connection using LC duplex optical connectors over SMF (single-mode fiber). One data lane operates in each direction, at 25.78 Gbps using single



25G SFP28 LR Transceiver: 10km Reach Optical

Experience reliable 25G data transmission with Innoptical's SFP28 LR transceivers. Reach up to 10km and ensure seamless interoperability for your long distance

Contact Us

For datasheets, pricing, or custom telecom energy solutions, please visit:
<https://www.koskolong.co.za>