



Adam Tas Corridor Energy

Iron feet under the distribution box





Overview

What Is a Distribution Box?

A distribution box, also known as a power distribution unit, is a critical component in any electrical system.



Iron feet under the distribution box

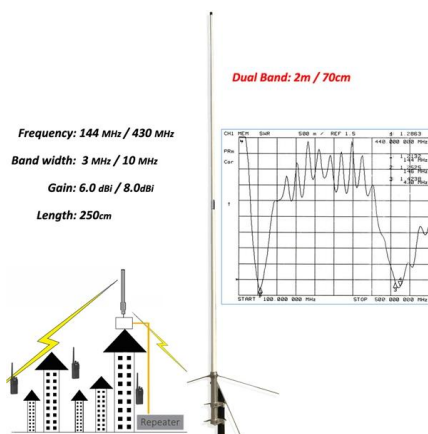


Adjustable support feet for field leveling Switchgear line up.

I have seen a switch gear lineup jacked up high enough to put a thin layer of levelling concrete underneath. Some installations have steel angle iron or channels set in the concrete to

What is the Ideal Installation Height for a Distribution Box

Install a distribution box at 4.5 to 5.5 feet high for safety, accessibility, and compliance. This height ensures easy use and protection from hazards.



Key Points Of Installation And Collocation Of Distribution Box In

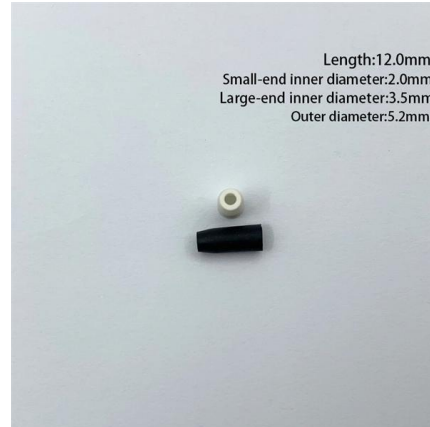
The wire inlets and outlets in the distribution box and switch box shall be set at the lower bottom of the box. It is strictly prohibited to set them at the top, side, back or door of the box.

Distribution boards components

Distribution boards (generally only one in residential premises) usually include the meter (s) and in some cases (notably where the supply



utilities impose a TT earthing system and/or tariff

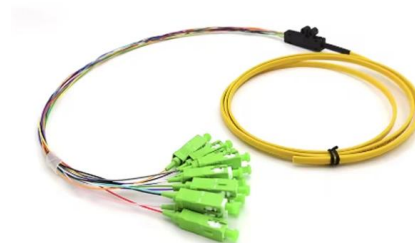


Requirements And Specifications For Installation Of

The bottom edge of the distribution box is usually between 1.5 meters and 1.8 meters above the ground, which is convenient for operation and

The Complete Guide to Distribution Box: Installation, Types & More

What's the difference between a distribution box and a sub-panel? A distribution box typically refers to the main electrical panel that receives power from the utility service. A sub-panel is



Running Power Cables under a Data Center Raised

PDU Cables branch circuit power distribution cables are being installed every day, below a raised floor and overhead with ladder racks and in a cable tray. To



The Best Solution to Install Components Inside The

What is the trickiest installation problem of components inside the distribution box? When we were installing circuit breakers and switches under

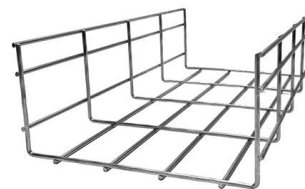


Understanding Distribution Boxes: A Comprehensive Guide

A distribution box, also known as a power distribution box or electrical distribution box, is used to distribute electrical power safely to multiple

What is the Internal Structure of The Distribution Box

Learn about the internal structure of a distribution box, its components, functions, and key types. Understand its role in electrical systems



Step-by-Step Guide to Install MCB Distribution Box

Learn how to safely install an MCB distribution box with this comprehensive guide. Step-by-step instructions to ensure correct installation.



PEX Products for Residential & Commercial Applications

Uponor offers durable PEX piping, fittings, and other products for plumbing, radiant heating and cooling. Learn why PEX is preferred by plumbers, builders and

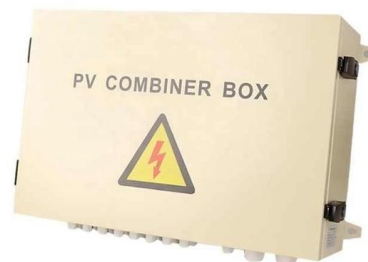


How to solve the problem of distribution box installation

The iron sheet of the distribution box is too thin and the rigidity is poor, forming severe deformation between the shell and the door surface, and the sealing gap

An Ultimate Guide for Metal Distribution Boxes

The setback of a distribution box determines how far the face of the box is from the wall. This is important if you are using tile or other thick wall coverings.



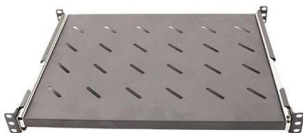


How to confirm whether the installation location of the

The electrical distribution box plays a vital role in the power system. It is responsible for distributing electricity to various circuits and equipment.

Key Material Requirements for Distribution Box

Learn the key material requirements for distribution box, Discover how the right materials ensure long-lasting performance and safety.



About the Internal Structure and Basic Components of the Distribution

The electric distribution box is a low-voltage power distribution device that assembles switchgear, measuring instruments, protective appliances and auxiliary equipment in a closed or semi-closed

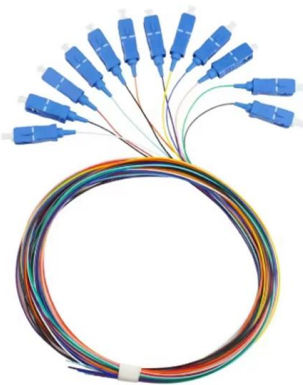
The Importance of Distribution Boxes in Electrical Systems

A distribution box is an exposed or concealed metal box that houses the circuit breakers that regulate the distribution of electricity throughout a



Key Points Of Installation And Collocation Of Distribution Box In

Distribution box and switch box shall be made of iron plate or high-quality insulating material, and the thickness of iron plate shall be greater than 1.5mm The electrical equipment in the distribution box



What Is a Distribution Box?

What to Look for When Choosing a Distribution Box If you're going to buy a distribution box, there are several things you should look for. You should



News

In spaces where multiple distribution cabinets or boxes are installed, maintaining a uniform installation height is crucial. This promotes a coordinated look across the area and enhances visual appeal.





Contact Us

For datasheets, pricing, or custom telecom energy solutions, please visit:
<https://www.koskolong.co.za>