



Adam Tas Corridor Energy

Iron rod in the distribution box





Overview

Spacing: Position rods at the upper and lower thirds of the box to maximize leverage against wind. Fastening: Utilize stainless steel hardware to prevent corrosion at the contact points. The distribution box (DB box) helps safely and efficiently distribute electrical power. The distribution box has the characteristics of small size, simple installation, special technical performance, fixed location, unique configuration function, not limited by the site, relatively common application, stable and reliable operation, high space utilization, less land occupation and. Inside, you'll find parts like circuit breakers and fuses that protect the system from problems like overloads and short circuits.



Iron rod in the distribution box



The installation requirements for the distribution box

Learn how to install a distribution box safely and correctly. Covers wiring, placement, standards, and expert tips for a compliant setup.

How to Install a Cable Distribution Box Safely and

In modern electrical systems, cable distribution boxes (also known as electrical distribution boxes or distribution boxes) play a crucial role as the key

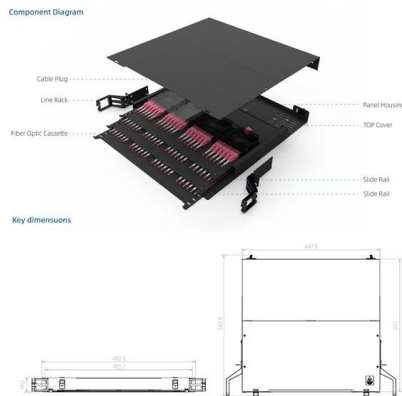
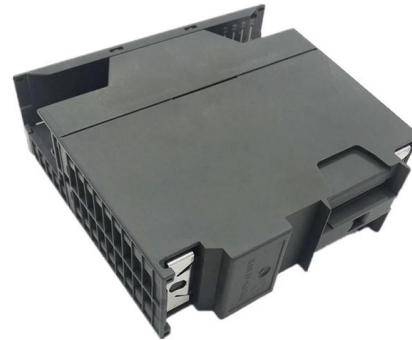


About the Internal Structure and Basic Components of the Distribution

The electric distribution box is a low-voltage power distribution device that assembles switchgear, measuring instruments, protective appliances and auxiliary equipment in a closed or semi-closed

Iron Box Power Distribution

Iron Box can stock, build, or source just about any power cord. Some types of power cables they offer include generator, server, power



How Does a Power Distribution Box Work

Learn how a power distribution box works step by step--from incoming power to circuit protection and smart monitoring--for safe, efficient electricity delivery.

Distribution board

North American distribution boards are generally housed in sheet metal enclosures, with the circuit breakers positioned in two columns operable from the front.



Latest news & breaking headlines , The Times and The

The latest breaking UK, US, world, business and sport news from The Times and The Sunday Times. Go beyond today's headlines with in-depth



Distribution Box Guide: Types, Components & Solutions

Understand distribution boxes (DB boxes) in 5 minutes. Learn about types, components, functions, and uses. Find the perfect DB box for your needs.



Power Distribution Boxes Explained Simply

Discover the essentials of a Power Distribution Box--how it works, key types, benefits, and tips to ensure safe, efficient electrical power management.

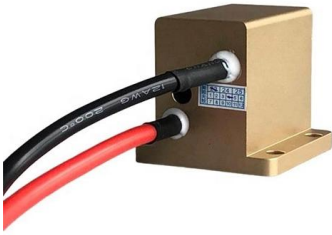
The Complete Guide to Distribution Box: Installation, Types & More

Blog The Complete Guide to Distribution Box: Installation, Types & More By Admin Aug 2, 2025
No Comments # distribution box Introduction
Electrical systems power our homes, offices, and



Distribution Box: Types and Functions , Axis-Electricals

A distribution box ensures that electrical supply is distributed in the building, also known as a distribution board, panel board, breaker panel, or electric panel.



Installation problems and solutions of distribution box

The iron sheet of the distribution box is too thin and the rigidity is poor, forming severe deformation between the shell and the door surface, and the sealing gap is too large.



Understanding Distribution Boxes: Your Guide to Power

Weatherproof Distribution Boxes These serve specific outdoor purposes, with rain, dust, and extreme temperatures sealed shut, protecting any

What Is an Electrical Distribution Box? A Complete Guide

What Is an Electrical Distribution Box? An electrical distribution box serves as a centralized unit for distributing electrical power within





MAIN AND INTERMEDIATE DISTRIBUTION FRAMES

Cords are provided on an M.D.F. to connect circuits as required to the jack boxes located at the top of the frame, and means must be provided to preserve a neat and tidy appearance of these cords.

Distribution Boxes: Types and Functions

Learn what an electrical distribution box (DB/distribution board) is, its main components (MCB/RCCB/RCBO, SPD, busbar) and common types.



Understanding Distribution Boxes:A Comprehensive Guide

A distribution boxes is an essential device that manages the safe and efficient flow of electrical power throughout different areas of a building or facility.

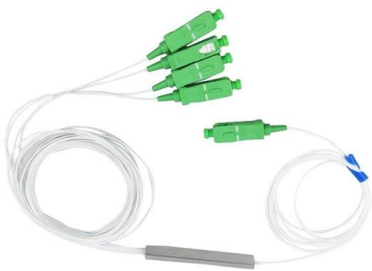
About the Internal Structure and Basic Components of the Distribution Box

Electric power distribution box and distribution cabinet, distribution panel, distribution panel, etc., are complete sets of equipment for centralized installation of switches, meters and other equipment. The



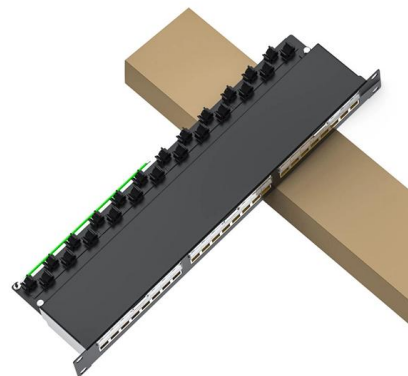
What is the Internal Structure of The Distribution Box

Learn about the internal structure of a distribution box, its components, functions, and key types. Understand its role in electrical systems



Essential Steps for Effective Septic Distribution Box Installation

Learn how to install a septic distribution box with essential steps, tips, and maintenance recommendations for long-lasting efficiency.



Electrical Distribution Box Diagrams , PDF , Power

This document provides a list of components in an electrical distribution box with their names and associated wiring diagrams. It includes tables of diodes, fuses,



What is the Function of a Distribution Box in Electrical Systems

Understand the function of the distribution box in electrical systems and how it ensures safe and efficient power distribution.



Why You Must Install At Least Two Support Rods For Your Waterproof

Sealing: Apply outdoor-grade sealant around the entry points where rods meet the enclosure. Summary for Long-term Reliability A secure waterproof distribution box is essential for

Distribution Boards

Distribution boards, often referred to as electrical panels or breaker boxes, serve as the nerve center of any electrical system. Here we explore the crucial parts of a distribution board and gain insights into



An Ultimate Guide for Metal Distribution Boxes

Distribution boxes are an essential part of every home or building's electrical system. These enclosures house wiring connections for various applications such as



The Complete Guide to Ground Rods in Electrical Systems

Ground rods are critical in electrical grounding systems, providing a safe pathway for excess electricity dissipating into the earth. These rods protect people and electrical equipment from



A Definitive Guide To Distribution Boxes

The distribution box acts as the center of power distribution, distributing electricity to all connected devices. A distribution box, also known as a distribution board, panel board, breaker

Understanding Distribution Boxes: A Comprehensive Guide

These boxes come in a variety of sizes and shapes depending on how complex a system is and the electric requirements of the building. A variety



The Anatomy of a Distribution Box: Key Components

A distribution box uses MCBs, RCDs, and busbars to protect circuits, prevent shocks, and ensure safe power distribution in homes and buildings.

Contact Us

For datasheets, pricing, or custom telecom energy solutions, please visit:
<https://www.koskolong.co.za>