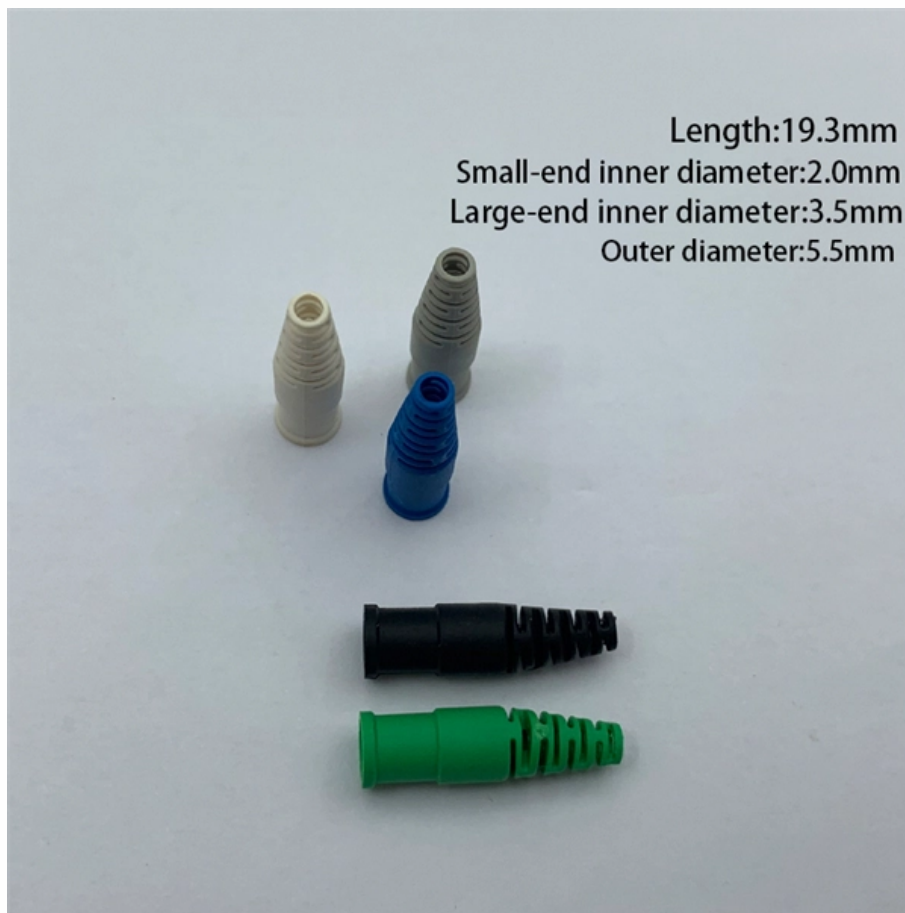




Is an aggregation switch part of the access network





Overview

An aggregation switch is a network device that consolidates traffic from multiple access switches, wireless access points, or other edge devices and forwards it to core switches or routers. By bundling multiple network connections into a single high-bandwidth link, aggregation switches help.



Is an aggregation switch part of the access network

What is Aggregation Switch? Role in Network Connection

Aggregation Switch plays an important role in the aggregation layer, supporting the connection and management of traffic from different network devices.



Data Center Design: Basic 3 Layers, Core, Aggregation,

Data Center Basic Layered Design of Core, Aggregation, and Access The data center network design is based on a proven layered approach, which



What Is an Aggregation Switch?

An aggregation switch sits between access layer switches and the core network, acting as an intermediary. It collects traffic from multiple access switches, aggregates it, and then forwards

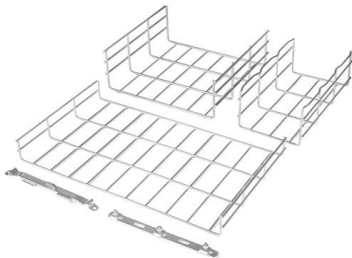


Switch (3) Features of access layer, aggregation layer and core layer

Small-scale networks and short-distance networking environments can adopt a "shrink



core" design, that is, ignore the aggregation layer and use the core layer switch to directly connect to the access layer



Aggregation Switches

Aggregation switch is the convergence point of multiple access switches, which serves to unify the accessed data and transmitting out the data. It

What is an Aggregate Switch?

An aggregate switch is a high-capacity network switch that consolidates connections from multiple access switches, acting as a central point for managing network traffic and providing



Everything You Need to Know About Aggregation Switch

An aggregation switch enhances network performance in the access layer by reducing the number of direct connections between access switches and



Link Aggregation: What is it, and How Does it Work?

Link aggregation is a way of bundling a bunch of individual Ethernet links together so they act like a single logical link. Learn more on the Auvik blog

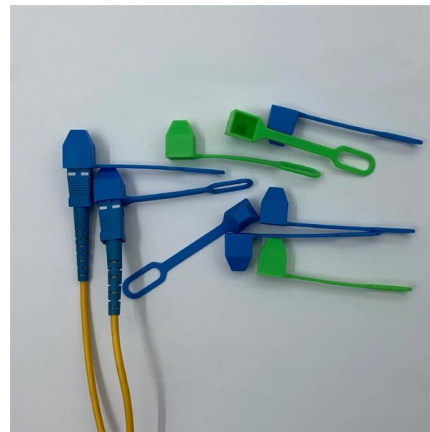


SMB Switch: Access Switch vs Aggregation Switch vs

Access switches, aggregation switches and core switches are another classification method. In the data center or enterprise network planning,

Aggregation Switches 101: Enhancing Security and Performance

Conclusion An aggregation switch is a vital component in structured network architecture. It not only consolidates traffic but also enhances performance, security, and scalability. By acting as



SMB Network Design: Core vs. Distribution vs. Access Switches

Don't overspend on network hardware. Our expert guide explains core, distribution, and access switches so you can design the right network for your SMB.



Understanding the Role of an Access Switch in Your

An access switch is a necessary part of the network structure. It is designed to connect the edge devices, i.e., computers, printers, and IoT devices,



what are the major differences between a Access Switch and Aggregation

In a Carrier Ethernet domain, Could someone please help me understand what's the basic difference between Access Switch and Aggregation Switch both in terms of s/w and h/w

The relationship between access layer switches,

You may think that the access layer switch, the aggregation layer switch, and the core layer switch belong to the switch. Then, what kind of





What Is an Aggregate Switch?

Discover the role of an aggregation switch and its function in a network. Explore differences between aggregation, access, and core switches.



What is an Aggregation Switch?

The aggregation switch is located in the middle of the network architecture, which is equivalent to a middle-level manager of a company. It

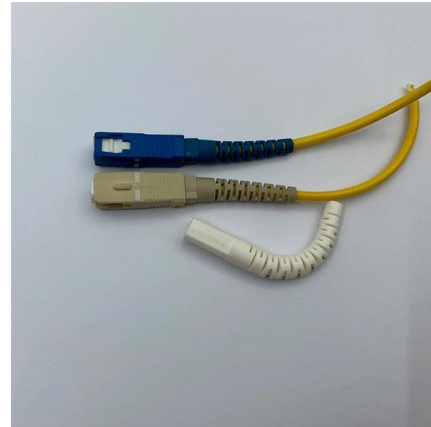


Core, Aggregation, or Access Switches? Choose the

Knowing the roles of core, aggregation, and access switches in contemporary network topology becomes essential to create effective and

Aggregation Switches

Aggregation switches consolidate data traffic from multiple network access switches into a single high-bandwidth link to the core network. In the



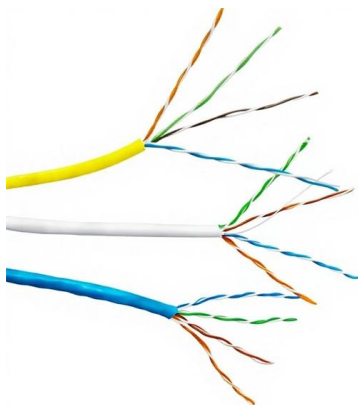
Difference and connection scheme between access

The aggregation layer switch is the aggregation point of multiple access layer switches. It is used to export the access nodes uniformly, and also



What is an Aggregation Switch?

As the physical entity of the aggregation layer, the aggregation switch's primary function is to aggregate the data of the access layer switch and



What Is an Aggregation Switch and How to Choose?

An aggregation switch is a network device that consolidates traffic from multiple access switches, wireless access points, or other edge devices and forwards it to



What Is an Aggregation Switch and How It Works

The aggregation switch connects to multiple access switches and consolidates their traffic. Rather than having every access switch connect directly to the network backbone, the aggregation



In-depth analysis: What is an aggregation switch?

In many network constructions, we have all heard of switches. So do you really understand switches? Why are aggregation switches often overlooked?

Everything You Need to Know About Aggregation Switch

The access switch collects data from network devices such as computers, printers, and servers and sends it to the aggregation switch for further



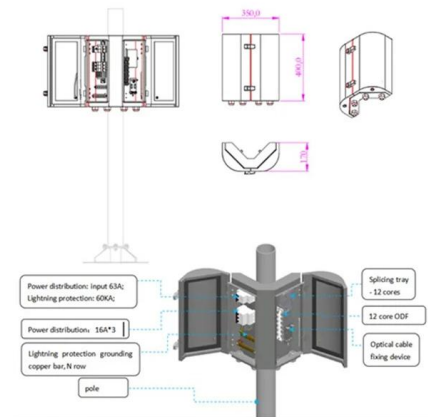
Core Aggregation Access with MPO cabling

3-Tier Network Introduction A multi-tier core / aggregation / access layer network is often created using a series of distribution areas that enable all switches to be connected to each other within the same



What is an Aggregation Switch?

Additionally, the access switch includes user management features like address authentication, user authentication, and user information collection in addition to offering sufficient



Contact Us

For datasheets, pricing, or custom telecom energy solutions, please visit: <https://www.koskolong.co.za>