



Is the sheath-core fiber optic cable two-core

Product Catalog





Overview

A 2 core fiber optic cable contains two individual optical fibers housed within a protective sheath, designed to transmit data via pulses of light. Each fiber typically supports one-directional communication, meaning one fiber sends while the other receives, enabling full-duplex. You will also learn how different aspects of the product can affect budget and design. D-Link 2 Core FTTH Fiber Cable is an enhanced performance FTTH solution, constructed with two single mode/bend sensitive fibers (ITU-TG657A/G652D), protected by two strength member having a final LSZH jacket, used for FTTX/FTTH application between the apartment's central communication room and the. Two parallel Fiber Reinforced Plastic (FRP) strength members ensure good performance of crush resistance to protect the fiber.



Is the sheath-core fiber optic cable two-core



Core (optical fiber)

Core (optical fiber) The structure of a typical single-mode fiber. 1. Core 9 mm diameter 2. Cladding 125 mm dia. 3. Coating 250 mm dia. 4. Buffer or jacket 900

Huijue Drop Cable 2-Core Multi Mode/Single Mode Optical Fiber CE

Huijue Drop Cable 2-Core Multi Mode/Single Mode Optical Fiber CE Certified Easy-Strip for FTTH/Indoor Networking Wiring



OPTIC FIBER CABLES

D-Link 2 Core FTTH Fiber Cable is an enhanced performance FTTH solution, constructed with two single mode/bend sensitive fibers (ITU-TG657A/G652D), protected by two strength member having a

Armoured 2 core fiber optic cable

Armoured 2-core fiber optic cable available from \$0.08 to \$66. Available for purchase from 1 unit. Suitable for outdoor use and supplied in various



core counts. Ideal for wholesalers and resellers.



Avalon 12 Core, Single-Mode OS2, Unitube, Jelly-filled,

Previous product Avalon 06 Core, Single-Mode OS2, Unitube, Jelly-filled, Corrugated Steel Tape, Outdoor, Armoured, Loose Tube, Fiber Optic Cable - HDPE Sheath -



Fiber Optic Cable Components & Materials: Complete Technical Guide

This guide breaks down the five core components of a fiber optic cable -- from the specification package to the actual installation considerations. You will also learn how different



48 Core 1 in 2 out Fiber Optic Cable Closure

48 Core 1 in 2 out Fiber Optic Cable Closure
Features: High-quality materials Superior environmental resistance (IP68) Compatibility with multiple cable types





Fiber Optic Splice Closures Horizontal 12 24 Core

Fiber optic splice closures are one of the most important types of equipment for user access points, and junction box fiber optic splice cases are used to protect and



How to Choose the Best 2 Core Fiber Optic Cable: A Complete

A 2 core fiber optic cable contains two individual optical fibers housed within a protective sheath, designed to transmit data via pulses of light. Each fiber typically supports one-directional

Buy 2 Core Fiber Optic Outdoor Drop Cable

Buy 2 Core FTTH Fiber Optic outdoor Drop Cable at best prices today from City Telecommunication Centre Kenya. Call us on 0110004400.



1 Core, 2 Core and Multi-core Fiber Optic Cables, What

Single-core cables are great for straightforward, long-distance communication, dual-core cables offer flexibility and redundancy, and multi-core



How Many Core In Fiber Optic Cable Do I Need

According to the IBDN standard, we generally recommend using 12 cores for the communication room in each building, and 24 cores for the building



Fiber Optic Cables

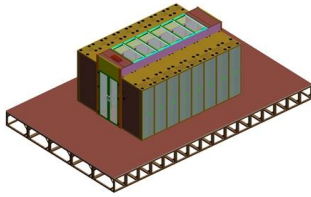
CommScope designs and manufactures a comprehensive line of fiber optic cables--from outside plant to indoor/outdoor and fire-rated indoor fiber cables.



Outdoor GYXTW Fiber Optic Cable 2-24 Core (2/4/6/8/12/16) Single

Outdoor GYXTW Fiber Optic Cable 2-24 Core (2/4/6/8/12/16) Single-Mode Ideal for FTTB Building & Parking Lot





4-core vs 2-core optical cables Unveiling the

The number of cores in an optical cable directly affects its transmission capacity. A 4-core optical cable has four separate fiber strands within its protective sheath, allowing for higher data transmission

OM1 vs OM2 vs OM3 vs OM4 vs OM5 Multimode Fiber

Compare OM1, OM2, OM3, OM4, and OM5 multimode fiber specs, distances, bandwidth, and applications. Essential guide for data center fiber



2 Core Drop Cable Overview with OWIRE Solutions

A **2 core drop cable** is a type of fiber optic cable that contains two optical fibers housed within a single protective sheath. It is primarily used in Fiber to the Home (FTTH) and Fiber

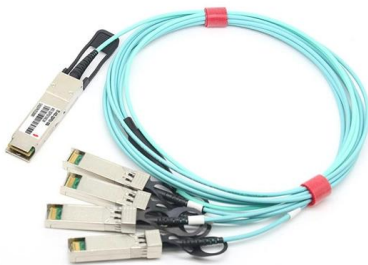
2 core multimode fiber optic cable

At its core, the 2 core multimode fiber optic cable consists of two fibers that enable simultaneous transmission of data. These fibers are encased in a protective sheath, balancing durability with



GYXTW Single-Mode Fiber Optic Cable 2/4/6/8/12/16/24 Core

GYXTW Single-Mode Fiber Optic Cable 2/4/6/8/12/16/24 Core Outdoor Aerial/Duct for Power Station SCADA & Weak Current Systems



Indoor/Outdoor Fiber Optic Cable

Experience seamless, rapid installations with our versatile indoor/outdoor ribbon fiber cable. Ideal for high-density data centers, colocation facilities and vertical



Future-Proof Connectivity Unleashing 2-Core Fiber Drop

At its core, a 2 core fiber drop cable consists of two individual optical fibers enclosed within a single protective sheath. This design allows for the





Single-mode optical fiber

In fiber optics, a quadruply clad fiber is a single-mode optical fiber that has four claddings. Each cladding has a refractive index lower than that of the core.



Fiber Optic Cable Types: Comprehensive Guide

Fiber optic cables fall into two main categories: single-mode fiber (SMF) and multimode fiber (MMF), each designed for specific transmission

FTTH 2 Core Indoor Drop Cable (Type:G657A)

Two parallel Fiber Reinforced Plastic (FRP) strength members ensure good performance of crush resistance to protect the fiber. Then the cable is completed with a black or color LSZH sheath.



2 Core Single Mode Fiber Optic Cable VCELINK

VCELINK single-mode fiber cable, metal strength member, metal messenger, LSZH sheath, outdoor FTTH cable. Inquiry for wholesale price!



ADSS dual double jacket sheath aramid yarn All

We are a manufacturer of (ADSS)dual double jacket sheath aramid yarn All Dielectric Self-Supporting Optical Fiber Cable 2-288 core Manufacturer. We



2_Core_FTTH_NCB-FS09X-FBLS-02

Cable enclosed a 0.250mm fiber, and it's suitable for standard connector of industry.



1x8 PLC Fiber Splitter 12 Core SC SM FTTH Fiber Optic Terminal

The splitter termination box is suitable for fiber terminal point to complete connection, distribution and scheduling between perimeter fiber cables and terminal equipment, especially suitable for mini





Contact Us

For datasheets, pricing, or custom telecom energy solutions, please visit:
<https://www.koskolong.co.za>