



**Adam Tas Corridor Energy**

# **Itut Optical Cable Testing Standards**





## Overview

---

This article introduces and explains the scope, application, and practical relevance of the eight most widely used fiber and optical cable standards: ITU-T G. Fiber optic networks rely on a foundation of rigorous international standards that define. - refers to single-mode optical fibre cables installed by pulling method to be used for telecommunication networks in ducts and tunnels; - recommends that optical fibre dimensional and transmission characteristics, together with their test methods, should comply with one or more of [ITU-T G.



## Itut Optical Cable Testing Standards

---



### Handbook Optical fibres, cables and systems

The first ITU-T Handbook related to optical fibres, Optical Fibres for Telecommunications, was published in 1984, and several others have been produced over the years. It is an honour to present you with

### ITU-T standards For Fiber Optic Cable

What are the ITU-T standard types for optical fibers? What are the similarities and differences among them? ITU-T standards, also known as ITU-T Recommendations, describe the



### Recommendation ITU-T G Suppl. 47 (03/2025)

Supplement 47 to ITU-T G-series Recommendations provides information on the general transmission characteristics of single-mode optical fibres and cables specified in the ITU-T G.65x-series of

### Fiber Optic & Cable Standards Guide , FiberMania

Fiber optic networks are built on well-defined standards that ensure quality, performance, and



interoperability. This article explains eight of the most

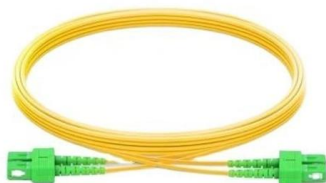


### ITU-T L.100/L.10 (05/21) Optical fibre cables for duct and tunnel ap

Recommendation ITU-T L.100/L.10 describes characteristics, construction, test methods and performance criteria of optical fibre cables installed by pulling method for duct and tunnel

### Major Recommendations: Optical

These standards provide attributes and values for optical fibres and cables which are needed to support: Network applications such as those recommended in Recommendation ITU-T G.957 up to 2.5 Gbit/s



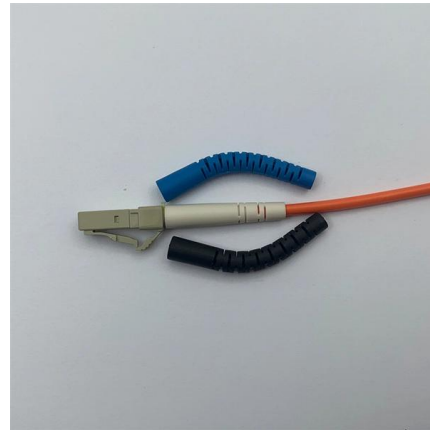
### Optical technologies

This ITU-T Technology Watch Report provides an overview of the optical world and surveys standards and ongoing research work which will lead to a new



## Summary

It also contains information used in the development of test method Recommendations such as Recommendations ITU-T G.650.1, ITU-T G.650.2 and ITU-T G.650.3. Moreover, this Supplement



## Recommendation ITU-T G Suppl. 47 (03/2025)

General aspects of optical fibres and cables  
Summary Supplement 47 to ITU-T G-series Recommendations provides information on the general transmission characteristics of single-mode

## G.hn

G.hn was developed under the International Telecommunication Union 's Telecommunication Standardization sector (the ITU-T) and promoted by the HomeGrid Forum and several other



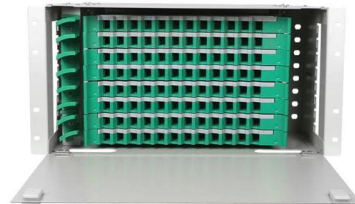
## Table of contents

1 Scope 2 References 3 Definitions 4 Abbreviations and acronyms 5 Conventions 6 ITU-T G.65x-series Recommendations 7 Features of existing optical fibre categories and their application areas 7.1



## ITU-T Standards for Various Optical Fibers

ITU-T standards, also known as ITU-T Recommendations, describe the geometrical properties and transmissive properties of multimode and single

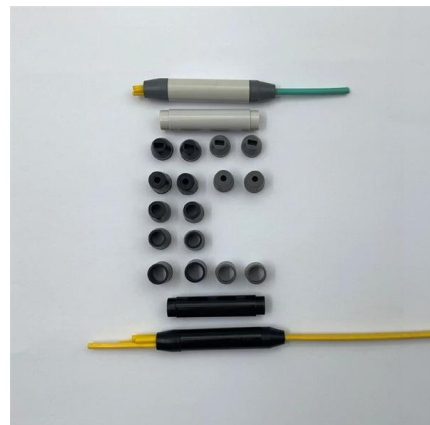


## ITU-T Recommendations for Optical Fibers and Cables

Engineering Knowledge Base Glossaries, troubleshooting guides, optical formulas, 80+ infographics, and ITU-T standards references.

## Fiber Optic & Cable Standards Guide , FiberMania

This article explains eight of the most important global fiber and cable standards -- ITU-T, IEC, TIA, ISO/IEC, and Telcordia -- covering their scope,



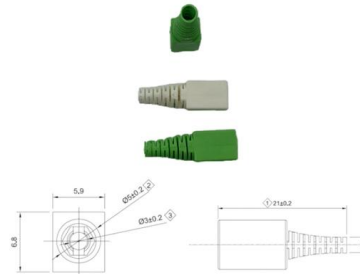


## FS Community

Hier sollte eine Beschreibung angezeigt werden, diese Seite lässt dies jedoch nicht zu.

## Recommendation ITU-T L.100 (01/2024)

This document provides comprehensive guidelines for single-mode optical fiber cables installed via the pulling method in ducts and tunnels, primarily for



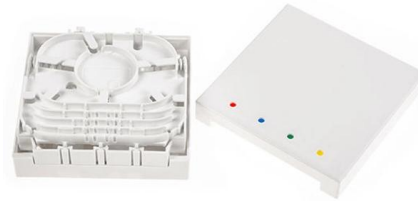
## ITU-T Standards for Various Optical Fibers

ITU-T standards, also known as ITU-T Recommendations, describe the geometrical properties and transmissive properties of multimode and single-mode fiber optic cables.



## Modem

The G.hn standard for instance, developed by ITU-T, provides a high-speed (up to 1 Gbit/s) local area network using existing home wiring (power lines, phone lines,



## Cabling Standards - Fibertel Systems

Technology Cabling Standards ITU-T Recommendations: ITU-T G.650.1 and 650.2 - definitions and test methods for linear, deterministic attributes of single-mode fibers and cables. ITU-T G.651.1 -

## Recent Standardization Activities in ITU-T on Single-mode Optical

The revision of these Recommendations are active topics in ITU-T due to the capacity growth in terrestrial and submarine optical fiber networks. In the next section, recent activities for revising these



Rear of the optical fiber distribution box



## ITU iLibrary , Optical Fibres, Cables and Systems

The Handbook is intended as a guide for technologists, middle-level management, as well as regulators, to assist in the practical installation of optical fibre-based systems.



## Passive optical network

Passive optical networks were first proposed by British Telecommunications in 1987. Two major standard groups, the Institute of Electrical and Electronics



## ITU-T Rec. Technical Paper (04/2021) LSTP-GLSR Guide on the use of ITU

Summary ITU-T Technical Report "Guide on the use of ITU-T L-series Recommendations related to optical technologies for outside plant" provides information on the background, development and

## ITU-T Rec. Series G Supplement 59 (02/2018) Guidance on optical

Guidance on optical fibre and cable reliability Summary Supplement 59 to ITU-T G-series Recommendations provides guidance regarding the long-term reliability of cabled optical fibres. This



## ITU-T L.100/L.10 (05/21) Optical fibre cables for duct and tunnel ap

Abstract Recommendation ITU-T L.100/L.10 describes characteristics, construction, test methods and performance criteria of optical fibre cables installed by pulling method for duct and



## ITU-T

This part of IEC 60331 specifies the test procedure, and gives the performance requirement, including a recommended flame application time, for optical fibre cables required to maintain circuit



### LoRawan outdoor base station

- \* Industrial Internet gateway
- \* Compatible with LoRaWAN network,
- \* ClassA/B/C mode
- \* Support 8/16 channel
- \* Supports PoE power
- \* supply and backup battery power supply
- \* 10KV lightning protection



## ITU-T Rec. L.163 (11/2018) Criteria for optical fibre cable

Recommendation ITU-T L.163 describes criteria for the installation of optical fibre cables defined in Recommendation ITU-T L.110 in remote areas with lack of usual infrastructure for installation

## Contact Us

---

For datasheets, pricing, or custom telecom energy solutions, please visit:  
<https://www.koskolong.co.za>