



Adam Tas Corridor Energy

Join SFP optical module LPO





Join SFP optical module LPO



LightCounting :: PAM4 DSPs Battle LPO for OFC

Progress on linear pluggable optics (LPO) and other less-than-full-DSP variants was evident at 100G/lane, but vendors also set the stage for 200G/lane. Last

2026 Global Optical Module Selection Guide (Website Homepage)

Power Priority: Silicon photonics / LPO for AI clusters; NPO for high-density racks.
Compatibility First: Confirm port type (SFP+/QSFP-DD), firmware version, and MSA standards.



Optical Interconnect Technology Analysis: LPO, NPO, CPO

By removing the DSP within the module, LPO achieves a pure analog transmission path for the link, significantly reducing power consumption and

Unlocking the Secrets of Fiber SFP Connectors: A

Understanding SFP Modules: The Basics of Optical Transceivers What is an SFP transceiver,



and how does it work? In my experience in the



What Is an SFP Module? Complete Guide

SFP modules, or Small Form-factor Pluggable modules, are essentially the workhorses of modern networking. They facilitate data

Optical Transceiver Market Size, Share, Industry Report

Optical Transceiver Market Size The global optical transceiver market was valued at USD 13.4 billion in 2025. The market is expected to grow from USD 15.4 billion in



SFP Fiber Optic Connector Types: LC, SC, MPO Explained

Explore common SFP fiber optic connector types, including LC, SC, and MPO/MTP. Learn their differences, use cases, and compatibility.





Linear Drive Pluggable Optics

Eoptolink offers a full portfolio of LPO optics for OSFP, OSFP-RHS, QSFP-DD and QSFP112 transceivers. At ECOC 2023, Eoptolink will be conducting an interop demo to highlight



Optical Transceiver Solutions for Cloud Performance

Explore advanced optical transceiver technology for hyperscale environments, ensuring performance and reliability across platforms.

800G LPO Module , FS Inc. , Aug 2025

The FS 800G LPO DR8 module operates with a maximum power consumption of just 8.5 W, which is approximately 50% lower than 800G DSP-based modules.



Optical Transceivers , Fiber Optic Transceivers , Form

Optical Transceivers From 10G to 1.6T, Amphenol's optical transceivers deliver scalable, high-performance solutions across all major form



Optical Module Market Analysis and Forecast in 2026

AI computing power has driven explosive growth in the optical module market, with 800G and 1.6T technologies leading the industry transformation.



How to connect SFP module

The PoE switch with SFP can be linked together by using the fiber optical cable. The advantages of fiber optical connection are high speed, long distance, low latency.

Dell networking transceivers and cables

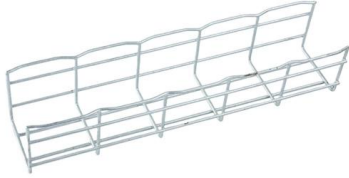
The adapter supports standard SFP and SFP+ optics in a QSFP+ socket providing backwards compatibility, while the 40GbE port for future bandwidth expansion. Dell networking transceivers and





How to choose an optical fiber link and an SFP module?

What cables suit an SFP module? What distance can be there between SFP modules? And many other questions. The main advantages of optical fiber



LPO vs CPO: Which Will Dominate the Data Center

In the rapidly evolving landscape of data center optical interconnects, the competition between LPO (Laser Phased-locked Oscillator) and CPO



Linear Drive Pluggable Optics

In recent years, significant additional functionality has been added to the Host ASIC SerDes which supports longer transmissions over DAC/copper cables at higher speeds or to enable co-packaged

How to Connect Fiber Optic Cables to SFP Modules , Weunion Guide

Learn step-by-step how to connect fiber optic cables to SFP modules. Explore SFP transceivers, DAC/AOC cables, and best practices. Trust Weunion for high-quality SFP solutions -



Small Form-Factor Pluggable (SFP) Module Installation Guide

Introduction These installation instructions provide overview and specification information for small form-factor pluggable (SFP) modules, as well as instructions for installing and removing SFP modules.



LPO-MSA

Overview An LPO (Linear Pluggable Optics) solution offers considerable power savings for optical interconnect by removing the digital signal processing (DSP)



Optical Component Startup Tracker

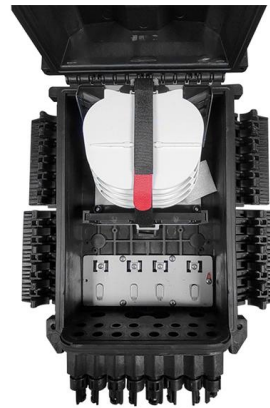
The number of venture-backed optical component startups has exploded - the Optical Component Start-Up Tracker identifies these companies





How do you connect fiber optic cable to SFP?

Place the SFP transceiver in front of the fiber optic connector. Insert the SFP optical module into the port of the fiber optical cable connector, and push down gently



Installing Optical Transceivers and Connecting Optical Fibers

This section describes how to install optical transceivers on the SFP or SFP+ ports and connect them to the ports of the peer device using optical fibers according to the network plan.

SFP Fiber Optic Connector Types: LC, SC, MPO Explained

Most SFP fiber optic modules use LC connectors, while SC connectors are mainly found in legacy networks and MPO/MTP connectors are used for high-density cabling rather than directly on



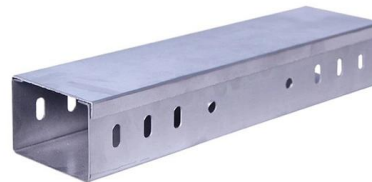
Introducing Linear Pluggable Optics (LPO)

This article gives a short insight into how LPO technology works, how it differs from DSP-based optics, the scenarios where it offers the most advantages, and the



Small Form-Factor Pluggable (SFP) Module Installation Guide

These installation instructions provide overview and specification information for small form-factor pluggable (SFP) modules, as well as instructions for installing and removing SFP modules.



SFP Optical Transceiver Launch Strategies: Defining the New

The Year of Smarter Optics The communications world is racing toward a new phase of connectivity. As data centers expand, 5G and edge networks mature, and AI workloads multiply, the

Optical Transceivers Design Reference Guide

A SFP transceiver shall meet the electrical and optical requirements, including amplitude, eye diagram, jitter, and other parameters, specified for the standards with which the transceiver claims compliance.



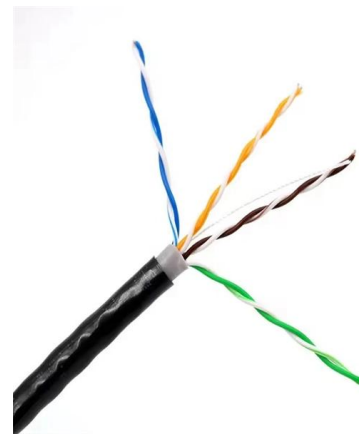


How to Install and Remove Optical Modules Safely

Install optical modules safely with ESD protection, proper handling, and dust control. Follow these steps to avoid damage and ensure network reliability.

How to Connect Fiber Optic Cables to SFP Modules , Weunion Guide

Align the module with the device's SFP port, ensuring TX/RX labels match the cable's direction. Gently push the module until it clicks into place (a latch will secure it).



Contact Us

For datasheets, pricing, or custom telecom energy solutions, please visit:
<https://www.koskolong.co.za>