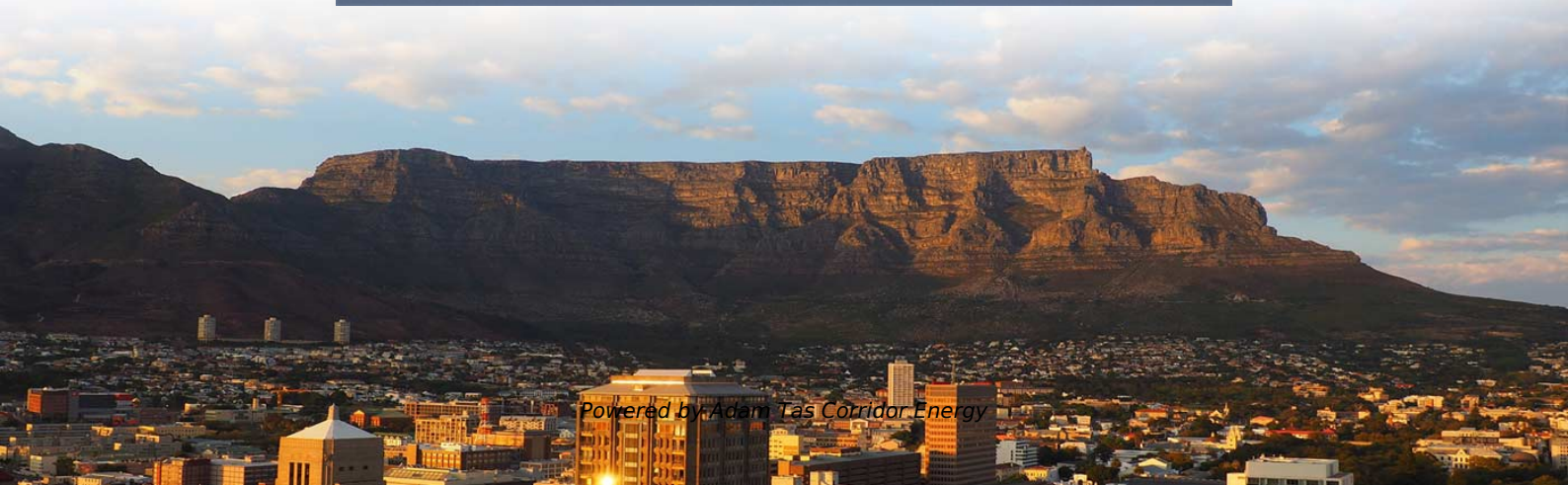
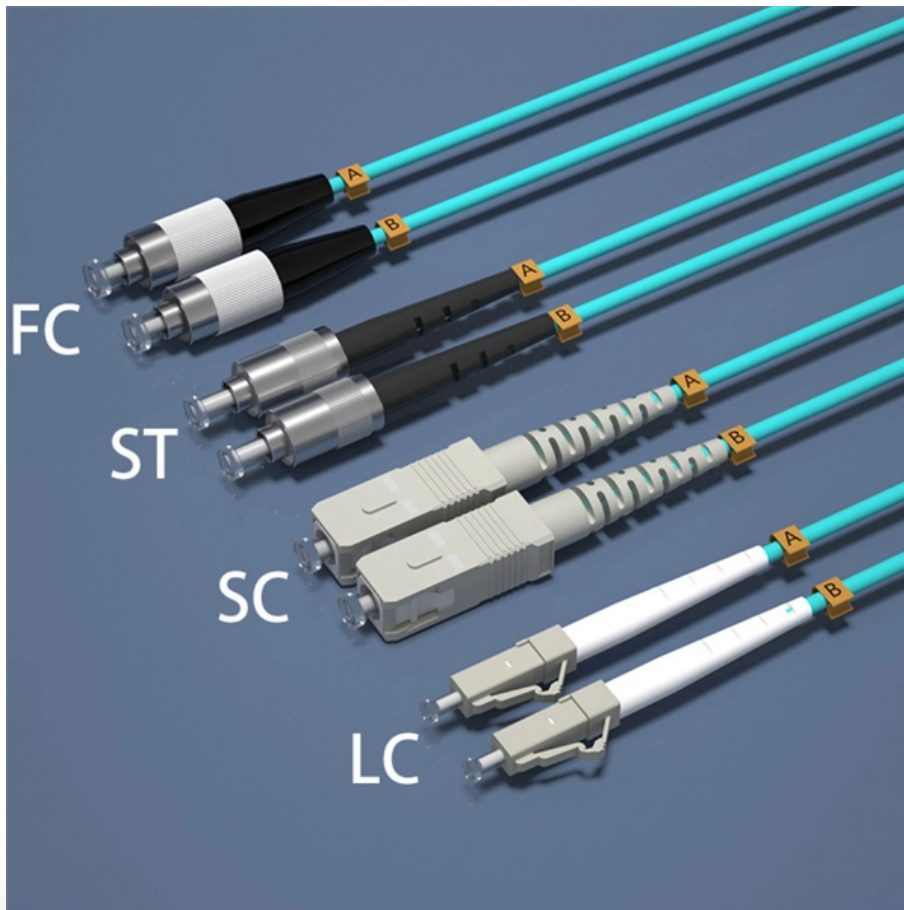




Adam Tas Corridor Energy

Junction Box Remote Monitoring Type and How to Choose Performance Comparison





Junction Box Remote Monitoring Type and How to Choose Performance



Top 10 Remote Monitoring & Management (RMM) Tools

In 2026, Remote Monitoring & Management (RMM) tools --the backbone of modern IT operations--remain more essential than ever. As hybrid

Standalone RTUs vs. PLC-Based Monitoring: Expandability Comparison

This blog explores the differences in expandability between standalone RTUs and PLC-based monitoring systems, helping you make informed decisions for your industrial applications.

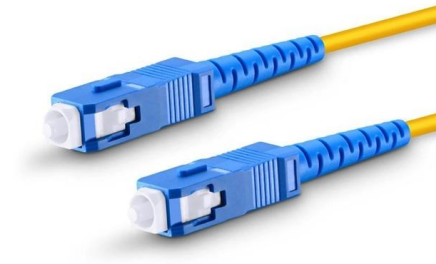


Top 12 RMM Software Tested: Features and Pricing

RMM software components keep business devices secure and efficient, thanks to features like patch management. We benchmarked the top 3

scadahacker

Hier sollte eine Beschreibung angezeigt werden, diese Seite lässt dies jedoch nicht zu.



Three-phase electrical monitoring system

The WTYJ-PD type monitoring instrument complies with the international standard IEC 62053-21/22/23:2020. Through the "cloud-pipe-terminal" integrated architecture, it realizes the optimization

4.0 TECHNICAL REFERENCE FOR MONITORING EQUIPMENT

4.1 INTRODUCTION The objective of this section is to provide reference materials for various types of sensors commonly used to measure process and/or air pollution control equipment



How and why to choose remote-monitoring technology

To guarantee peak performance and long-term efficacy, it's critical to take into account important factors when selecting the right remote monitoring





Multi Circuit Junction Box : Cathodic Protection Remote

Remote monitoring for rectifiers, test points and bonds with 10+ yrs autonomous battery power, The CorTalk RMU2 reliably transmits in near real-time via cellular



What is a Junction box, and its applications?

What is a Junction box? Junction boxes are used in most of the electrical and instrumentation installations. A junction box in the instrumentation

Top 10 Remote Monitoring & Management (RMM) Tools

In this post, we will explore the Top 10 RMM Tools for 2026, outlining their key features, pros, cons, and providing a comparison to help you choose the



Microsoft Word

-- Measurement made easy Smart junction box designed for parallel connecting of 2 to 4 load cells to a measurement electronics and ensuring the monitoring of their proper function.



Junction Temperature Optical Sensing Techniques for

Recent advancements in power electronic switches provide effective control and operational stability of power grid systems. Junction temperature is a crucial



The Essential Guide to Junction Boxes: Types, Uses,

Unlock the essentials of junction boxes with Vorlane's guide on types, uses, and installation tips for safe and efficient electrical setups.

Best Remote Monitoring & Management (RMM) Software

G2 ranks top Remote Monitoring & Management tools like NinjaOne, Datto RMM, & TeamViewer using real user reviews. Compare the best RMM tools now!



Intelligent Condition Monitoring Technology of OPGW Optical Cable

To improve the stability and reliability of the OPGW optical cable junction box, this paper proposes an intelligent monitoring technology, which can comprehensively monitor the environmental



21 Best Network Monitoring Tools for 2026 (Free & Paid)

The best network monitoring tools reviewed by an experienced network administrator. Get the facts today on these essential network tools.



Electronic House

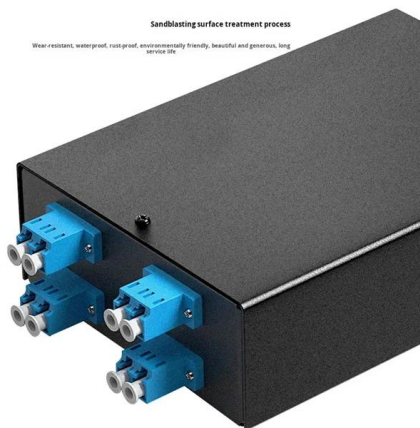
Hier sollte eine Beschreibung angezeigt werden, diese Seite lässt dies jedoch nicht zu.





A Comparison of Pull

A Comparison of Pull- and Push-based Network Monitoring Solutions Examining Bandwidth and System Resource Usage



Instrument Junction Boxes

In this article we will look at the considerations and options available when specifying a junction box, and also at some of the documentation used by instrument designers and technicians relating to Junction

Remote IO Cabinets versus Junction Boxes in Industrial Control Systems

Discover the importance of control systems in industrial processes. This article explains how they work and why they are crucial for safety and efficiency.



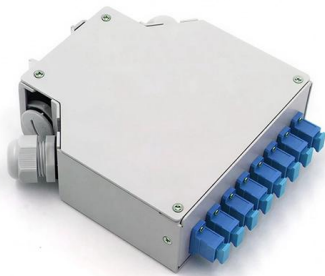
How to design an intelligent battery junction box for advanced EV

The massive electrification efforts happening in the automotive industry are driving the need to reduce the complexity of BMS by adding electronics in the junction box, while enhancing system safety.



20 Best Remote Monitoring & Management Tools of 2026

The best remote monitoring and management software helps teams detect issues early, maintain system health, and support devices across



The 8 Best Network Monitoring Tools for 2026

The best network monitoring tools for 2026 include Zabbix, Datadog, and Cacti. Compare features, pricing, and supported platforms among our top picks.

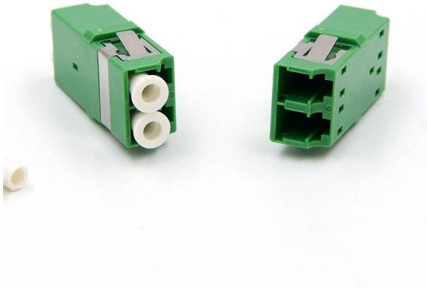
How to design an intelligent battery junction box for advanced EV

How to Design an Intelligent Battery Junction Box for Advanced EV Battery Management Systems
Issac Hsu As electric vehicles (EVs) become more popular, the challenge for automakers is to reflect true



Metered, Monitored, Switched, Smart: Comparing Types

Wireless remote monitoring saves time and money, especially in facilities that have a lot of PDUs. You save on the cost of the wire, the time it



Instrument Junction Boxes

Junction Box Materials of Construction Junction boxes can be manufactured in a variety of materials including stainless steel, mild steel, glass reinforced polyester,



What type of Junction Box should I use? , CTC

CTC offers a wide variety of industrial Junction Box solutions designed for the easy and safe monitoring of remotely mounted vibration sensors, which otherwise



Refinery Wirelessly Monitors Junction Box Pressure

Each Z-Purge junction box was monitored for proper pressure on a continuous basis. The wireless solution eliminated the need to use existing spare wire capacity to monitor the junction boxes.





Contact Us

For datasheets, pricing, or custom telecom energy solutions, please visit:
<https://www.koskolong.co.za>