



Adam Tas Corridor Energy

KVM Switch Rail Limit





Overview

A KVM switch (with being an abbreviation for "keyboard, video, and mouse") is a hardware device that allows a user to control multiple from one or more sets of,, and.



KVM Switch Rail Limit



Ultra Short Depth Single Rail WideScreen LCD Console

CL3700NX is discontinued The CL3700 USB HDMI LCD Console is a short depth single rail LCD KVM console featuring an 18.5" LED-backlit widescreen LCD

Ultimate Guide to KVM Switches , Everything You Need to Know

Desktop KVM switches are compact devices that allow a user to access two, four, eight, or 16 computers from a single user console eliminating the need for extra peripherals, while providing faster access to



KVM LCD Console Tray Switch 17-in. 8PT Single-Rail

Adds an integral KVM switch to its keyboard, monitor, and mouse, and packs it all into only 1U of rack space. It mounts on standard 19" rails in any standard server

Dual Rail LCD KVM Switch

Introduction Overview The KL1508Ai and KL1516Ai Dual Rail LCD KVM Switches are control units that allow secure access to multiple



computers from a single KVM (keyboard, video, and mouse)



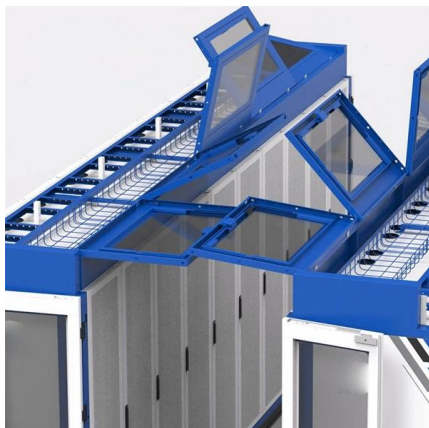
Cat 5 High-Density Dual Rail LCD KVM Switch

Introduction The KL1508 / KL1516 series of Cat 5 Dual Rail LCD KVM Switches are control units that allow access to multiple computers from a single KVM (keyboard, video, and mouse), console. A



Do KVM Switches Support High Refresh Rates for

Modern KVM switches, designed to manage multiple computers from a single set of peripherals, have evolved to handle high refresh rates. KVM



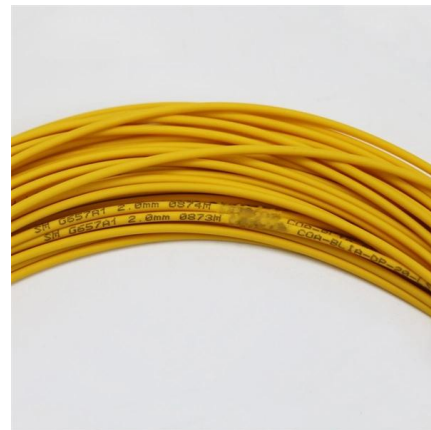
kl1508ai_kl1516ai_lcd_kvm_switch_ds_en_v11 dd

LCD Console + Cat 5 High-Density KVM Switch with KVM over IP KL1508Ai (KL1508AiM: 17" LCD; KL1508AiN: 19" LCD) KL1516Ai (KL1516AiM: 17" LCD; KL1516AiN: 19" LCD) The KL1508Ai and



The Best KVM Switches

The Best KVM Switches Switching among your work, personal, and gaming PCs can be a slog. With a KVM switch, you can



c15708-5716

User Notice
Product Information
This manual uses the following conventions:
Cables
Optional rack mount kits are also available, as listed in the table below:
Single-Level Installation
Closing the Console
OSD Overview
Manufacturing Number
OSD Login
OSD Main Screen Headings
OSD Navigation
OSD Functions
F2: LIST
F3: SET
F4: ADM
(Continues on next page.)
(Continued from previous page.)
F8: LOUT
Invoking Auto Scan: Skip Mode
Downloading the Firmware Upgrade Package
Starting the Upgrade
Upgrade Succeeded
Upgrade Failed
General Rack Mount
Général Montage sur bât
International
North America
Connection Tables
Clear Login Information
Two dedicated keys are provided on the keyboard module to make it easy to invoke Hotkey mode and the OSD, as shown in the diagram, below
About SPHD Connectors
All information, documentation, and specifications contained in this manual are subject to change without prior notification by the manufacturer. The manufacturer makes no representations or warranties, either expressed or implied, with respect to the contents hereof and specifically disclaims any warranties as to merchantability or fitness for any See more on assets.aten
Raritan

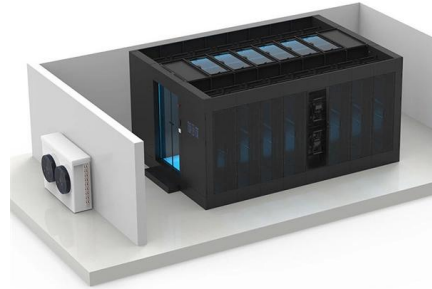
KVM Selection Guide - raritan

The table below summarizes the types of KVM switches, from enterprise wide IP access to the extension of a single computer. Look at the Typical Applications column for the type that best matches your



KVM -- The Linux Kernel documentation

Capabilities that can be enabled on VMs. 8. Other capabilities. 9. Known KVM API problems. 1. Acquisition Orders. 2. Exception. 3. Reference.



KVM Switch Selection Guide

KVM Switch Selection Guide KVM Switches: What is best for you? KVM switches are used to connect users to their computers. There are many types of switches to meet a wide variety of customer

kl1508ai-kl1516ai-1-Local-Remote-Shared-Access-8-16Port-Multi

The KL1508Ai and KL1516Ai Dual Rail LCD KVM Switches are control units that allow secure access up to 8 / 16 computers from a single KVM (keyboard, video, and mouse) console. They consist of an



networking

I'm having difficulties finding out how to limit network bandwidth for my VM. The results I found searching the web that libvirt already includes this function, but I can't find it anywhere. Using



KVM Host: System Requirements

Many of the system requirements for KVM hosts can depend on the kinds of applications running on the virtual machine (VM) and the amount of work they're expected to perform.



KVM SWITCH

For each rail, attach the front and rear flanges to the post flanges with two user-supplied screws at each end.



4.2. KVM limitations

Systems without a Constant Time Stamp Counter require additional configuration. Refer to Chapter 14, KVM guest timing management for details on determining whether you have a Constant Time Stamp



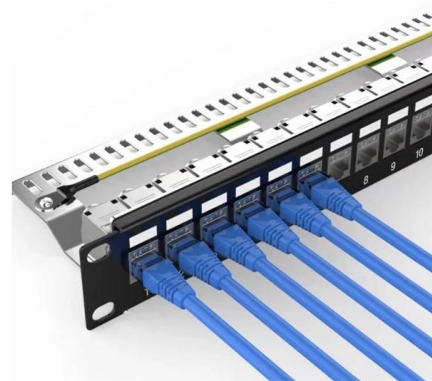


Dell Remote Console Switch Hardware User's Guide

The Dell 1082DS/2162DS/4322DS Remote Console Switch (RCS) digital keyboard, video and mouse (KVM) over IP and serial console switches combine analog and digital technology to provide flexible,

Kvm/Qemu maximum vm count limit

You are booting all the VMs using qemu-kvm right, and after 100s of VM you feel it's becoming successively slow. So when you feels it stop using kvm, just boot using qemu, I expect you

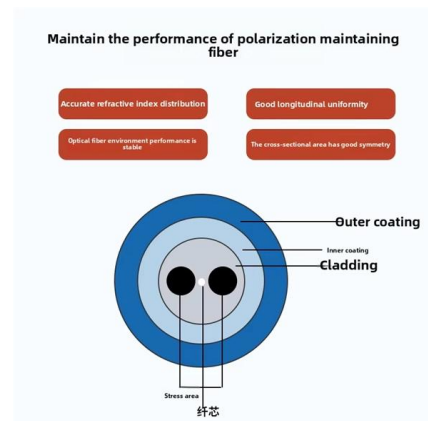


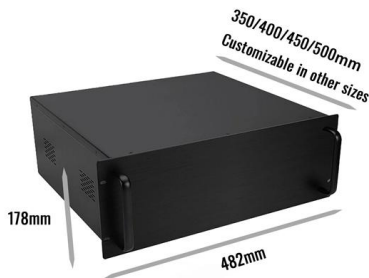
KVM SWITCH

KVM SWITCH - RACK MOUNT Quick Installation Guide DELL® READYRAILSTM RACK MOUNTING CONFIGURATIONS The ReadyRails system can be installed using the 1U tool-less method or one

Top 6 Considerations When Choosing a KVM Switch

A KVM switch provides a quick and cost-effective way to access several PCs with just a single monitor, keyboard and mouse. It can save more





5.2. KVM limitations , Virtualization Guide

KVM supports memory overcommit and can store the memory of guests in swap space. A guest will run slower if it is swapped frequently. When Kernel SamePage Merging (KSM) is used, make sure that

Rackmount KVM

Due to width limitations of a 19-inch rack (approximately 17.75" between the inside rails), the largest LCD to be incorporated into a KVM was 20.1" with a 3:4 aspect ratio.



Rackmount KVM

Rackmount lay-flat KVM A KVM is a computer input/output device offering the combination of a keyboard, video monitor and mouse (pointing device). They are typically constructed to fit into a 19

KVM switch

OverviewNameTypesUseVideo bandwidthMonitorPassive and active (electronic) switchesSoftware alternatives

A KVM switch (with KVM being an abbreviation for "keyboard, video, and mouse") is a hardware device that allows a user to control multiple computers from one or more sets of keyboards,



video monitors, and mouse.



KVM deployment support and requirements

Requirements Before you deploy a virtual appliance, ensure that the following additional requirements are met: Your KVM virtual environment is configured as described in Linux Kernel-based Virtual

Contact Us

For datasheets, pricing, or custom telecom energy solutions, please visit:
<https://www.koskolong.co.za>