



**Adam Tas Corridor Energy**

# **Laos OLT Optical Line Terminal QSFP28**





## Laos OLT Optical Line Terminal QSFP28

---



### 16-Port GPON/XGSPON Combo Optical Line Terminal

GP5810-16 XG (S)-PON OLT , 16-Port GPON/XGSPON Combo Optical Line Terminal , 100G Uplink, 1U Rackmount 16\*XG (S)-PON/GPON Combo port,

### Read the Features Optical Line Terminal (OLT)

Optical line terminals, also referred to as optical line terminations (OLTs), is a hardware device that acts as the endpoint for passive optical



### Exploring the OLT (Optical Line Terminal)

Dive into the heart of fiber networks with our in-depth exploration of Optical Line Terminal (OLT). Uncover the crucial role it plays in revolutionizing high-speed data transmission and network

### QSFP28 Optical Transceiver Modules (100G-SR/LR)

Our QSFP28-SR Multi-Mode-Fiber (MMF) Optical Modules integrate a 12-lane MTP/MPO fiber



receptacle (port) for 100G Ethernet links using industry-standard MTP/MPO fiber patch cords up to

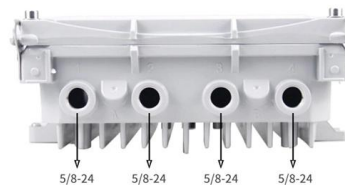


## Optical Line Terminal (OLT) The Ultimate Guide

The guide demystify what an OLT is, how it operates, the different technologies and the knowledge for configuration, and compatibility.

### 16-Port XGS-PON OLT with 8-Port 10G SFP+ + 2-Port 100G QSFP28

Two 40G/100G QSFP28 uplink interfaces for high-capacity backbone connectivity Eight 10G SFP+ ports for flexible service expansion or link redundancy Dual hot-swappable power supply (AC/DC/mixed)



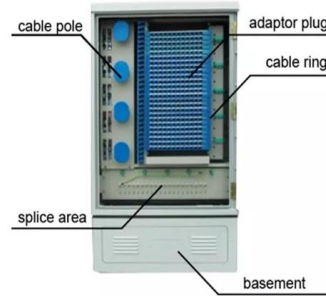
### QSFP28 Optical Transceiver 100 Gigabit Ethernet for up to 10 km Reach

The optical signals from the four lasers are multiplexed together optically. The combined optical signals are coupled to single-mode optical fiber through an industry standard LC optical connector. The



## The latest optical line termination (OLT) solutions for 2024

A look at the market for network optical line termination (OLT) equipment and some of the products and solutions available.

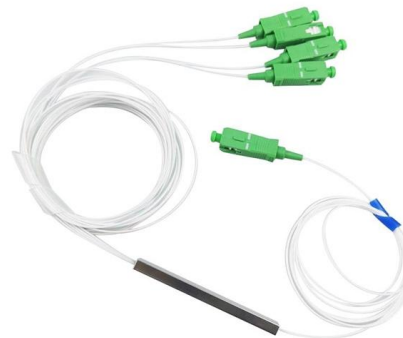


## FlexSym BOLT Optical Line Terminal (FlexSym BOLT)

The Tellabs FlexSym BOLT Optical Line Terminal is a multi-purpose Optical Line Terminal (OLT) enabling open, simple, and scalable connectivity for wired and

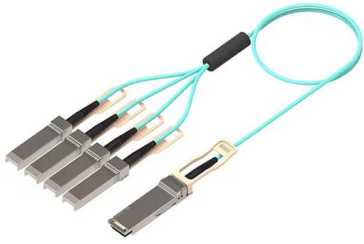
## Guide to Optical Line Terminal (OLT) Classifications: Detailed Types

In modern communication networks, optical line terminal (OLT) is the core device to realize point-to-multipoint(P2MP) in passive optical network (PON) architecture. The OLT is responsible not only for



## Optical Line Terminals Information

Optical line terminals, also called optical line terminations (OLTs), serve as endpoints for passive optical networks (PONs). They convert electrical signals from



## Cisco QSFP-DD Pluggable Open Line System (QDD)

Product overview The Cisco ® QSFP-DD Open Line System (QSFP-DD OLS) is a pluggable optical amplifier module that, together with the channel



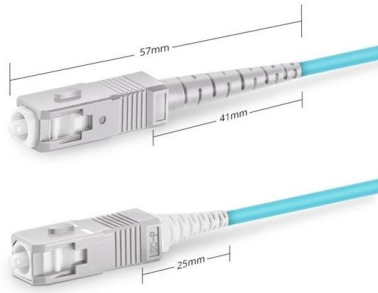
## Guide to Optical Line Terminal (OLT) Classifications: Detailed Types

Explore the different classifications of OLT equipment, understanding each type's unique functions and applications. Read this article to find the best solution for your network needs.

## 8

Featuring a compact design, 8- or 16-port Combo PON with GPON, XGS-PON, and Combo G/XGS-PON support, as well as dual 100G/40G QSFP28





Simplex SC UPC

## Cisco QSFP-DD Pluggable Open Line System (QDD)

Cisco designed an ingenious solution to collapse the optical line system functionalities into a pluggable form factor. The QSFP-DD open line

## What is OLT (Optical Line Terminal)? Types, Features

The full form of OLT is optical line terminal, which is a device used to connect the optical fiber and transfer signals. It's an important part of PON in FTTx.



## Exploring the OLT (Optical Line Terminal)

Dive into the heart of fiber networks with our in-depth exploration of Optical Line Terminal (OLT). Uncover the crucial role it plays in revolutionizing high-speed data transmission and network efficiency.

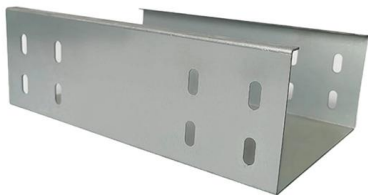
## XGT0X1U XGSPON OLT 100G QSFP28 Port 2GB Memory 8GB

XGT0X1U XGSPON OLT 100G QSFP28 Port 2GB Memory 8GB Storage Cassette Type Optical Line Terminal No reviews yet HOSECOM LIMITED 3 yrs



### **XGPL-16000**

PLANET XGPL-16000 is a high-density 16-Port XGS-PON Optical Line Terminal (OLT) designed for next-generation fiber broadband access networks. It



### **100G QSFP28-LR4**

OP-QSFP28-LR4 is designed with form factor, optical/electrical connection and digital diagnostic interface according to the QSFP+ Multi-Source Agreement (MSA). It has been designed to meet the



### **Hsgq Optical Line Terminal Equipment FTTH Layer 3 10g Olt Gpon 2**

Epon Gpon Olt Huawei Olt Zte Olt FTTH Olt, ONU Ont Gpon ONU Gpon Ont Zte Huawei ONU Ont, SFP Modules Transceiver Module Qsfp Qsfp28 SFP, Poe Switch Industrial Ethernet Switch, Router Dual



## Optical Line Terminals (OLT): The Heart of Fiber-Optic Networks

An Optical Line Terminal (OLT) is a crucial component in fiber-optic communication networks, particularly in Passive Optical Networks (PON) like GPON (Gigabit Passive Optical Network). OLTs



## Optical Converter Module 100Gbps 100G-10KM-OLT

The 100G-10KM-OLT-QSFP28 Converter Module is designed to operate in high-performance networks, supporting transfer rates of 100 Gbps using a single-mode

## OLT Devices, High-Quality Optical Line Terminals

Explore our range of high-quality GPON, EPON, and XG(S)PON OLT products. Find the perfect Optical Line Terminal solutions for your network needs.



## Guide to Optical Line Terminal (OLT) Classifications: Detailed Types

In modern communication networks, optical line terminal (OLT) is the core device to realize point-to-multipoint (P2MP) in passive optical network (PON) architecture. The OLT is



## What is OLT? The Ultimate Guide to Optical Line Terminals

Explore what an OLT (Optical Line Terminal) is, its role in FTTH networks, and a detailed comparison between market leaders Huawei and ZTE



## Contact Us

---

For datasheets, pricing, or custom telecom energy solutions, please visit:  
<https://www.koskolong.co.za>