



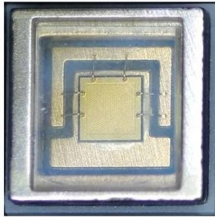
Adam Tas Corridor Energy

Large power distribution box floor installation





Large power distribution box floor installation



Your expert guide to floor box installation

Learn how to install floor boxes with our expert guide. Discover the tools, safety tips, and step-by-step instructions to complete a seamless installation.

Distribution Inside Large Buildings

Disadvantages :- A fault in any rising mains effect several floors (relatively low security). Loads are balanced only within each group. Larger power distribution board.



Distribution boards components

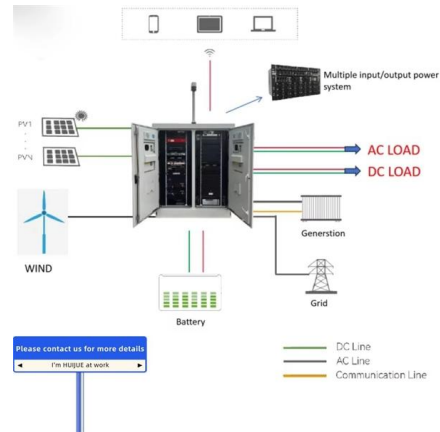
Distribution boards (generally only one in residential premises) usually include the meter (s) and in some cases (notably where the supply utilities impose a TT earthing system and/or tariff

Legrand AV , Understanding Floor Boxes: Applications and Installation

Explore the types, benefits, and installation



processes of floor boxes to enhance power and AV connectivity in modern workspaces.



Wall-Mounted vs. Floor-Mounted Distribution Boxes:

Compare wall-mounted vs. floor-mounted distribution boxes. Learn their key differences, uses, pros & cons to choose the right one for your space



Floor Box Power Supply for Office Spaces , Wieland

Structured power supply for office floor boxes and underfloor systems. Plug-and-play distribution simplifies planning and installation.



Power Distribution

This page provides guidance on floor power products and accessories, including tips on installing floor boxes and comparing different cable systems.





Underfloor cable systems explained in details

Underfloor installation of a screed-covered duct system This video illustrates the underfloor installation of a screed-covered EÜK duct system with a GES service outlet. The EÜK



Power Distribution Equipment

Introduction Power Distribution Equipment is a term generally used to describe any apparatus used for the generation, transmission, distribution, or control of electrical energy. This section concentrates

Discover Europe's digital cultural heritage , Europeana

Hier sollte eine Beschreibung angezeigt werden, diese Seite lässt dies jedoch nicht zu.



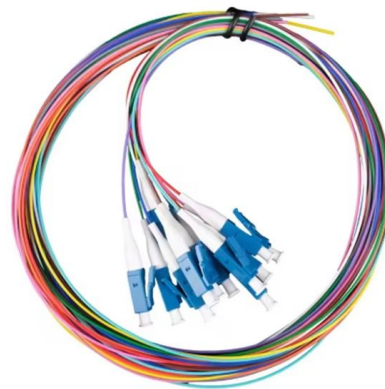
How to install and remove floor boxes

Floor box installation--how to fit and remove floor boxes If your business needs easy access to electrical sockets and other data ports throughout its premises, floor



Cable Floor Trunking Systems , Cableduct Limited

Designed to handle power and data cabling beneath floor finishes, Cableduct's floor cable trunking systems offer a robust and discreet solution for managing wiring

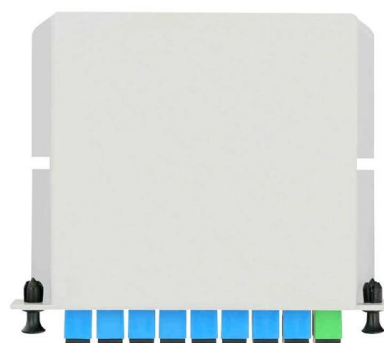


Main Distribution Box

The Main Distribution Box-Cable floor (MDB-CF) is the heart of the Global IFS Cable Floor Modular Wiring System. It provides power to the Access Floor Modules via

Key Points Of Installation And Collocation Of Distribution Box In

If they are combined in the same distribution box, power and lighting lines should be set separately. 7. The wire inlets and outlets in the distribution box and switch box shall be set at the lower bottom of





CABLE PULLING, INSTALLATION

Utilising our in-house 3.5-ton winch, we can efficiently install long lengths of cable. This advanced equipment allows us to handle extensive cable runs with minimal

Specifying and installing floor boxes

A floor box that is perfectly suited to a carpeted office space may not perform adequately in a workshop or retail environment, so understanding the



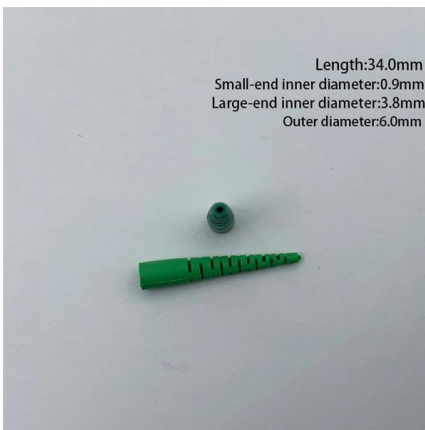
A Comprehensive Guide to Installing an Electric Floor Box

Electric floor boxes bring power, data, and communication connections to various locations within a room. Add convenience to your office with a floor box outlet.



Requirements And Specifications For Installation Of

In flammable and explosive environments, explosion-proof distribution boxes should be selected and explosion-proof treatment should be carried out.



The Complete Guide to Distribution Box: Installation, Types & More

Blog The Complete Guide to Distribution Box: Installation, Types & More By Admin Aug 2, 2025 No Comments # distribution box Introduction Electrical systems power our homes, offices, and

How to Install a Floor Outlet (DIY) , Family Handyman

Say goodbye to hazardous extension cords by installing a floor outlet by yourself. Follow this expert-approved step-by-step guide.



Electrical Containment Systems

Our containment systems provide neat and scalable cable management for large-scale residential projects, supporting seamless installations and future-proofing



Walkerflex Modular Access Floor Wiring System , Legrand

Walkerflex is a modular in-floor power distribution system featuring standardized cable, connectors and prewired junction boxes that allow for faster on-site deployment of power. The system is designed to



Busbars: why you should install underfloor power , CMD

Traditionally, busbars are the power distribution systems that carry and distribute electricity throughout industrial premises. In offices, the term "busbar" usually

Technical catalogue Floor distribution systems and systems for

The box has been designed so that it can be easily combined with the Scattoplast and Underfloor distribution systems both for traditional and for raised floors; it can also be used with trunkings for



MNS® Low Voltage Distribution Board and Power Cabinet

Product includes distribution board, lighting control panel, metering panel, and power cabinet., They are suitable for wall mounting and floor mounting with front access.



Contact Us

For datasheets, pricing, or custom telecom energy solutions, please visit:
<https://www.koskolong.co.za>