



Adam Tas Corridor Energy

Line Relay Protection Commissioning Report





Line Relay Protection Commissioning Report



Testing Line Distance Relays During Their Life Cycle

USA Summary--Different periods in the life cycle of protective relays merit different testing considerations. When a new type of distance relay is under consideration, acceptance

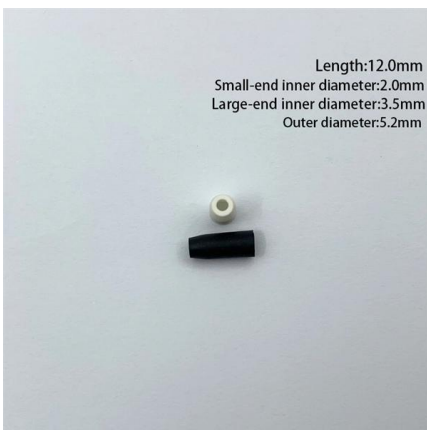
Pre-Commissioning Checklist for Transformers , PDF

Pre Commissioning Tests Checklist - Free download as Word Doc (.doc / .docx), PDF File (.pdf), Text File (.txt) or read online for free. 1. The document provides a



Lessons Learned Through Commissioning, Liveness, and Operating

The commissioning team was tasked with updating relay communications settings for an in-service primary line protective relay. The protection scheme consisted of redundant line relays protecting a



Relay Protection Engineer: Relay Testing and Commissioning

Deploying a holistic, data-driven approach in relay testing will ensure that your protective

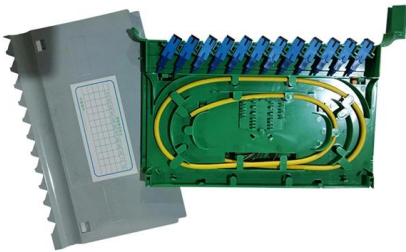


relays serve as a robust line of defense against operational failures, thus securing the reliability of the electric power



(PDF) Standardization of Protection Commissioning

Given the diverse applications of which standardization can be applied to, this paper will focus specifically on the standardization of commissioning tests for protection



SCHEMATIC REPRESENTATION OF POWER SYSTEM RELAYING

Working Group Assignment Report on common practices in the representation of protection and control relaying. The report will identify methodology behind these practices, present



IEEE PSRC, WG I-25 May 10, 2017 Commissioning Testing of

The commissioning of line relay schemes should start from simple, discrete checks validating the functionality and completeness of each component that makes up a line relay scheme at each





Power System Protective Relays: Principles & Practices

Protective relays and devices have been developed over 100 years ago to provide "lastline" of defense for the electrical systems. They are intended to quickly identify a fault and isolate it so the balance of



Pre-Commissioning Testing for Line Protection

The document discusses the importance of pre-commissioning testing procedures for line protection schemes. It describes how these tests are meant to ensure

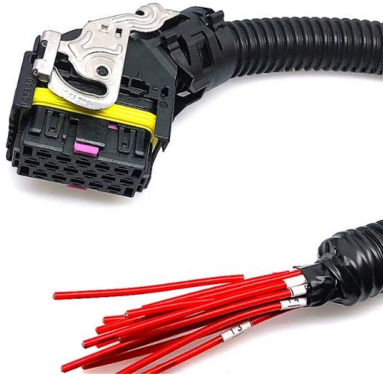
Commissioning tests of protection relays at site

Installation of protection relays Installation of protection relays at site creates a number of possibilities for errors in the implementation of the scheme to



Testing & Commissioning of Protective Relays Training

Practical sections with testing of the relays (ABB REG670, MiCOM P441, MiCOM P123,)



PROTECTIVE RELAY TESTING

A comprehensive testing program should simulate fault and normal operating conditions of the relay. Acceptance testing, commissioning, and startup will include control power tests, current transformer



Commissioning of Protective Relay Systems

Performing tests on individual relays is a common practice for relay engineers and technicians. Most utilities have a wide variety of test plans and practices. However, properly

Commissioning of Protective Relay Systems Commissioning of Protective

--Performing tests on individual relays is a common practice for relay engineers and technicians. Most utilities have a wide variety of test plans and practices. However, properly commissioning an entire





PROTECTIVE RELAY TESTING

Acceptance testing, commissioning, and startup will include control power tests, current transformer and potential transformer tests, and any other device testing associated with the protective relay.

Protection Relay Testing and Commissioning

PROTECTION RELAY TESTING AND COMMISSIONING The testing and verification of protection devices and arrangements introduces a number of issues. This happens because the main function



Protection Relay Testing for Commissioning

The purpose of this Standard Work Practice (SWP) is to standardise and describe the method for testing of Ergon Energy protection relays for commissioning purposes.

Commissioning of Protective Relay Systems

Download Citation , Commissioning of Protective Relay Systems , Performing tests on individual relays is a common practice for relay engineers and technicians. Most utilities have a wide



Commissioning of Protective Relay Systems

Protective relays now perform many functions besides protection. The advantages that modern microprocessor-based relays provide over traditional relays are well documented. These

Relay Protection Engineer: Relay Testing and Commissioning

Enhance relay testing and commissioning with expert insights in electric power transmission and control.



Commissioning of Protective Relay Systems

Abstract: Performing tests on individual relays is a common practice for relay engineers and technicians. Most utilities have a wide variety of test plans and practices. However, properly





INSTALLATION AND MAINTENANCE GUIDELINE FOR PROTECTIVE RELAY

Thorough installation testing and a preventive maintenance program verify the integrity of these protective relay systems. Comprehensive commissioning tests of new protection systems is a crucial

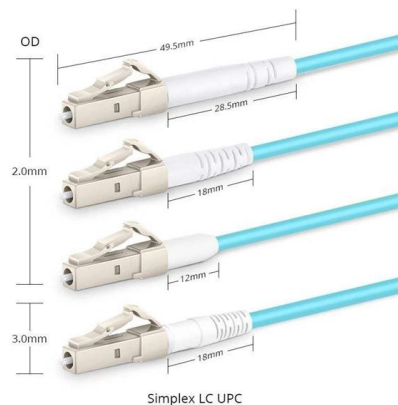


132kV Line Protection Test Report , PDF , Relay

Line Backup Overcurrent Relay (F51L, MiCOM P3U3) CT/VT ratios Line CT Details I_{pn}/I_{sn} Class Core Comments 800-400-200/1 5P20 Core 2 132kV Line Bay CT A

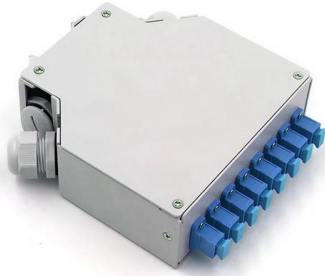
Protection Relay Testing for Commissioning

Manufacturer Equipment Manuals Note that all relay configurations files for a project will have an associated Protection Setting Report that details how the settings have been derived and the



Microsoft Word

The paper "Lessons Learned From Commissioning Protective Relaying Systems" describes best practices for commissioning protective relay systems . Observed field return data show that SEL



Commissioning of Protective Relay Systems

Protective relays now perform many functions besides protection. The advantages that modern microprocessor-based relays provide over traditional relays are well documented. These advantages



Protection Relay Testing and Commissioning

Commissioning tests are done to show that a particular protection configuration has been correctly used prior to setting to work.

Substation Commissioning Checklist: Step-by-Step Guide

Checklist for Transformer Primary Protection
Transformer Relay Protection Checklist Additional
Checklist for Relay, Relay Panel, and Control





Contact Us

For datasheets, pricing, or custom telecom energy solutions, please visit:
<https://www.koskolong.co.za>