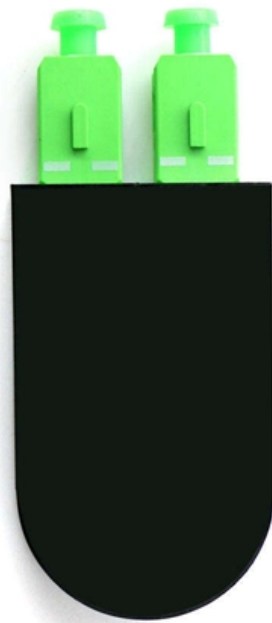




**Adam Tas Corridor Energy**

# **Lithuanian Transparent Optical Cable OS2**





## Overview

---

This OS2 fibre patch cable is ideal for connecting 1G/10G/25G/40G/100G/400G Ethernet connections. It is best suited for long distance application and can transport data for up to 10km at 1310nm, or up to 40km at 1550nm. The ultra-thin optical fiber developed by ELFCAM in 2025 combines discretion and robustness. Almost invisible to the naked eye, it offers great durability and facilitates the movement of boxes, while ensuring perfect integration into any environment. This item: Elfcam® - 8m LC/APC to SC/UPC Invisible/Clear Fiber Optic Cable - Single Mode - 125µm OS2 - Nylon Sheath - Transparent, Invisible and Easy to Install - 8 Meters Sold by Elfcam® Fulfillment Service and sent from Amazon Fulfillment. LEMONA GOOBAY electronics via internet: GOOBAY Fibre-optic Cable (FTTH), Singlemode (OS2) White, (Simplex), 30 m - optical fibre (FOC), LC-APC (8°) male > LC-APC (8°) male, halogen-free cable sheath (LSZH). Utilizes 9/125 micron singlemode fiber for optimal signal clarity and minimal loss.



## Lithuanian Transparent Optical Cable OS2

---



### OS1 vs OS2: Which Single Mode Fiber Optic Cable Is

Picture OS1 vs OS2 as two skilled architects--one designing a cozy office retreat, the other a sprawling urban expanse. These labels categorize

### OS1 vs OS2: The Ultimate Guide to Single-Mode Fiber Optic Cables

In the world of telecommunications and high-speed networking, single-mode fiber optic cables are the gold standard for long-distance, high-bandwidth data transmission. As of 2025, with

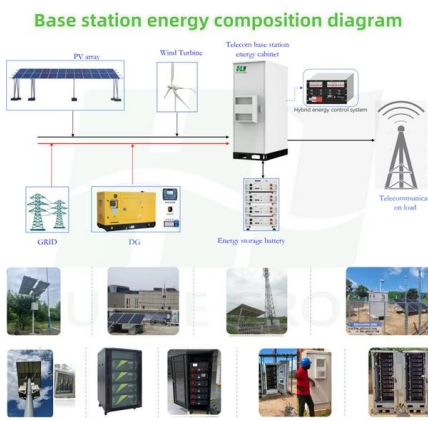


### Equip LC/LC Fiber Optic Patch Cable, OS2, 15m - Transparent

Description The equip® Optical Fiber Patch Cord is made of superior materials to ensure an end-face geometry connection with lower return loss and insertion loss. The Fiber Optic Patch Cord series

### Optic fibre cable OS2 loose tube 48 fibres indoor/outdoor LSZH

Optic fibre cable OS2 loose tube 48 fibres indoor/outdoor LSZH corrugated steel tape,



## Single Mode Fiber: OS1 vs OS2 Fiber

While both are single-mode fibers designed for long-distance, high-bandwidth transmission, understanding the key differences between OS1 and OS2

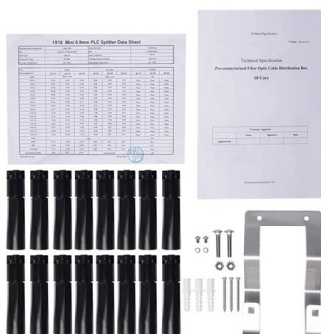
## Fiber Optics

Main Services Fiber Optics Network access using fiber-optic cables provides a highly reliable and high-speed access. This service is mostly used by operators of communication services, cable television,



## 4-24 Core External LT Cable

The OS2 9/125mm loose tube optical ber cables have been designed speci cally for internal and external applications. The singlemode ber is G.652.D compliant low water peak grade and offers OS2





## Elfcam

SC/APC to LC/APC Single Mode OS2 Fiber Optic Cable 125µm, Transparent Nylon Sheath, the fiber is transparent, invisible and easy to lay  
Outer diameter: 0.9 mm, They are also ITU G.657B3 certified.

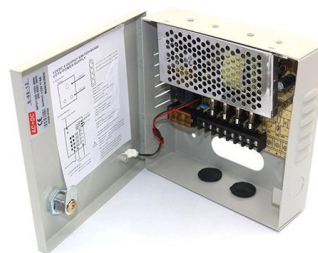


## Fibre Optic Cable

View Eland Cables' range of singlemode and multimode fibre optic cables - loose tube and tight buffered. Technical support, fast quote, international logistics and

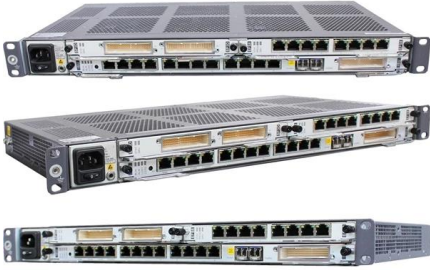
## Optic fibre cable OS2

Optic fibre cable OS2 - Stranded loose tube  
48-96 fibres indoor/outdoor LSZH 48 fibres Cat.  
No(s): 0 322 95



## The Truth About OS1 and OS2 Optical Fiber

Furthermore, OS1 and OS2 cable types can also include cables manufactured from B6\_A fiber, which is commonly known as bend insensitive single-mode optical fiber, or ITU



### Elfcam®

Elfcam - Fibre Optic Cable Transparent LC/APC to SC/UPC 125µm OS2 Fibreglass LC/APC of the highest quality for Deutsche Telekom Patch cable single-mode (OS2) Simplex for



### Optical cable , SM , OS2 , 48 fibers (8x6) , 9/125 , 2000N , LSZH , UV

Analogous prices Optical cable , SM , OS2 , 48 fibers , 9/125 , LSZH , UV , PRYSMIAN EUR 2.18 /m

### 0.5m (1.6ft) Fiber Patch Cable, 2 Fibers, LC UPC Duplex to LC UPC

This OS2 fibre patch cable is ideal for connecting 1G/10G/25G/40G/100G/400G Ethernet connections. It is best suited for long distance application and can transport data for up to 10km at 1310nm, or up to





## OS2 Fiber Optic Cables - Mouser

Mouser offers inventory, pricing, & datasheets for OS2 Fiber Optic Cables.

## FCD

Ideal for personal computers and servers, ensuring seamless integration in any setup. 10Gbps Speed Duplex LC Connectors Lifetime Warranty The FCD 0.5M OS2 LC LC Fiber Optic Cable is a high



## Differences\_between\_OM1\_\_OM2\_\_OM3\_\_OM4\_copy

ISO/IEC 11801 and 24702 make it clear that the nomenclatures OM1, OM2, OM3, OS1 and OS2 relate to cable transmission performance whereas the BS EN 50173 series makes it even clearer by

## Fibre-optic Cable (FTTH), Singlemode (OS2) White, (Simplex), 30 m

optical fibre cable for up to 100 Gbit/s that is bend-optimised and space-saving with a minimum bending radius of 30 mm (static) LSZH-compliant: cable sheath is halogen-free and flame-retardant according





## OS2 Fibre Optic Cables - Mouser Europe

OS2 Fibre Optic Cables are available at Mouser Electronics. Mouser offers inventory, pricing, & datasheets for OS2 Fibre Optic Cables.

### Elfcam®

LC/APC to SC/UPC fibre optic cable OS2 single-mode fibres 125µm, transparent nylon sheath, the fibre is transparent, invisible and easy to install Outer diameter: 0.9mm, they are also



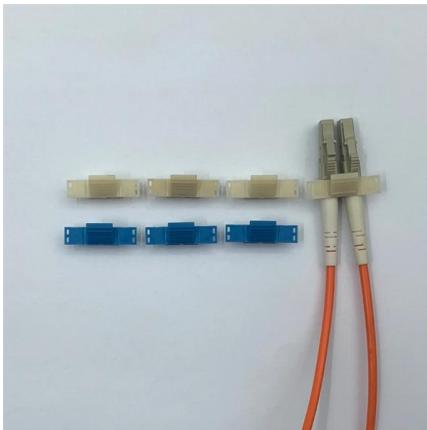
## OS2 Patch Cable: Navigating the Fast Lane of Fiber Optic

The OS2 patch cable boasts a slim, yellow-colored jacket, distinguishing it in the intricate web of fiber optic cables. Its core, made of a single strand of glass fiber, enables the transmission of



### Microsoft Word

OS2 Singlemode Optical Fiber (Global)  
TECHNICAL INFORMATION Panduit OS2 fibers meet or exceed numerous standards for optical fiber, including ITU-TG.652 (Categories A, B, C and D), IEC



### **Elfcam®**

The ultra-thin optical fiber developed by ELFCAM in 2025 combines discretion and robustness. Almost invisible to the naked eye, it offers great durability and

### **Amazon : Elfcam®**

Elfcam - 7 m invisible/transparent fibre optic cable, single-mode fibre optic 125µm



### **LWL-FTTH-Kabel 1G, transparent, OS2, G657.A2, 0,9mm, 250m**

Invisible and transparent optical cable OS2(G657.A2) LSZH 0.9mm Tight Buffer Transparent, 250M auf einer Spule in Praktischer abroll Box, OS2 9/125um G657.A2 PVC outer Jacket Cable color:





## Contact Us

---

For datasheets, pricing, or custom telecom energy solutions, please visit:  
<https://www.koskolong.co.za>