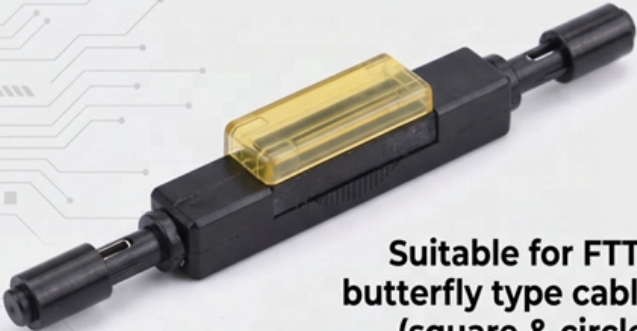




Load Distribution Diagram of Secondary Distribution Box


HIGH-PERFORMANCE FIBER OPTIC MECHANICAL SPLICE



Suitable for FTTx butterfly type cable (square & circle)

APPLICATIONS:

- Patch panels
- Distribution frames
- FTTH Outlets
- LAN environments





Load Distribution Diagram of Secondary Distribution Box

Understanding Distribution Boxes: Your Guide to Power



Weatherproof Distribution Boxes These serve specific outdoor purposes, with rain, dust, and extreme temperatures sealed shut, protecting any

ELECTRICAL DISTRIBUTION SYSTEMS (15A02701)

Fig. (i) shows a single line diagram of a radial system for d.c. distribution where a feeder OC supplies a distributor AB at point A. distributor is fed at one end only i.e., point A is this case.



The essentials of AC and DC power distribution systems

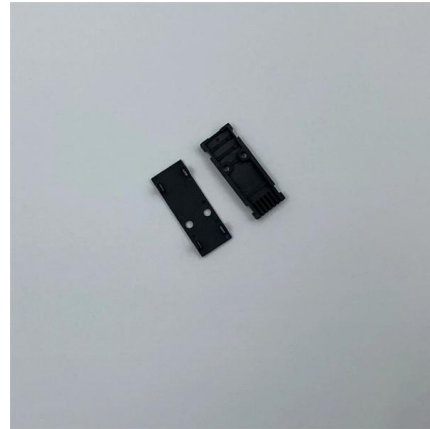
In general, the distribution system is the electrical system between the power substation fed by the transmission system and the consumers meters. It

ELECTRICAL DISTRIBUTION SYSTEMS (15A02701)

UNIT - II CLASSIFICATION OF DISTRIBUTION
SYSTEMS Classification of Distribution Systems -



Comparison of DC vs AC and Under-Ground vs Over - Head Distribution Systems- Requirements

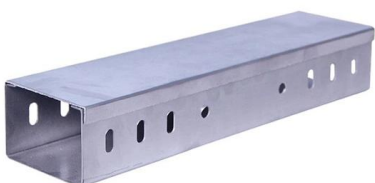


DISTRIBUTION SYSTEMS

Three main secondary voltages used for most residential/ commercial/industrial applications. Substation normally use 4 wire, multi-ground Y configurations to distribute power (feeders) to the secondary

Power Distribution Systems

The One-Line diagram on the following pages is an example developed for illustrative purposes only and was developed to show a wide range of product applications.



How to Wire a Home Distribution Box

How to Wire a Home Distribution Box - Step-by-Step , Distribution DB box wiring diagram
Welcome to our channel! In this video, we'll walk you through



Electrical Distribution Fundamentals Design Guide Data Bulletin

The load calculation for several motors, or a motor(s) and other loads, is 125% of the full load current rating of the highest rated motor per the second bullet of Motor Loads (Article 220.14(C))



Distribution Boxes: Types and Functions

A distribution boxes acts as the load center and main distributor of electrical power within a building. Also called a distribution board, panel board,

AC Distribution System , Primary distribution

Fig. 12.3 shows a typical secondary distribution system. The primary distribution circuit delivers power to various substations, called distribution substations.



Electric Power Distribution Systems

Summary This chapter provides an overview of electrical distribution network and systems. The primary substation is the load center taking power from the transmission or subtransmission network and



Single-line diagram of AC transmission and distribution

The secondary transmission is also 3-phase whereas the distribution to the ultimate customer may be 3-phase or single- phase depending upon the



Electrical Distribution Fundamentals Design Guide Data Bulletin

For the new college graduate from a four-year electrical engineering curriculum working in the field of commercial and industrial power systems, this guide can serve as a starting point for



Introduction to Power Distribution Systems

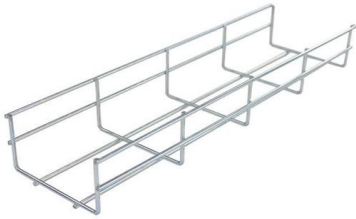
Generally, the secondary distribution systems are designed in single phase for areas of residential customers and in three phase for areas of industrial or commercial customers with high-load densities.





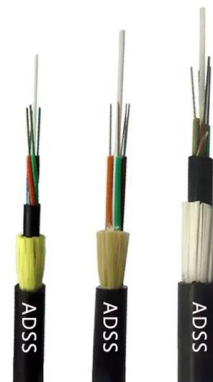
Lecture 1: Power Distribution Systems Overview

a typical 84 MVA transformer may be serving 3 feeders Primary (or medium-voltage) distribution network circuit between substation and dist. transformers Secondary (low-voltage) distribution network circuit



The loop electrical distribution system used to supply

The loop type of distribution system is used to supply bulk loads, such as small industrial plants and medium or large commercial buildings.

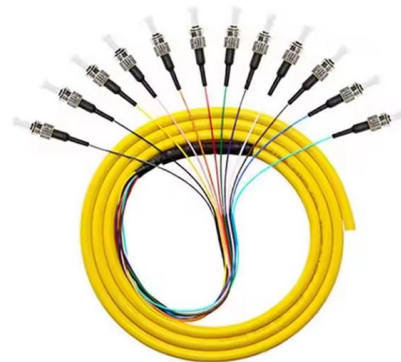


Interpretation of the Secondary Diagrams of the Box-Type Substation

Combining with the Electrical Drafting Standard (GB/T 6988) and engineering practical experience, the methods of diagram interpretation will be described step by step:

Everything You Need to Know About Load Center

Understanding load center wiring diagrams is essential for anyone who is involved in electrical installations or repairs. Load centers, also known as breaker boxes or





The Meaning and Function of Primary, Secondary, and Tertiary

Follows the principle of "one machine, one switch, one RCD, one box, one lock," ensuring no single switch controls multiple devices. This explanation aims to clarify the roles and functions of



Secondary unit substations design guide

Secondary unit substations requiring a primary disconnect are furnished with Eaton's Type MVS metal-enclosed load interrupter switchgear assemblies. Each assembly consists of one



How To Read The Distribution Box System Diagram

?Trace the outgoing line circuit?: Analyze the outgoing line circuits of the distribution box one by one, understand the load equipment and protection

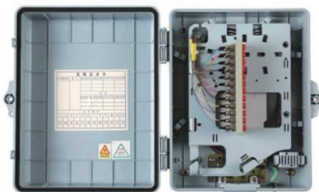
DISTRIBUTION SYSTEMS

Electricity powers almost every system in all three primary applications, therefore secondary distribution is very, very important (duh) Secondary voltages occur after the distribution transformer.



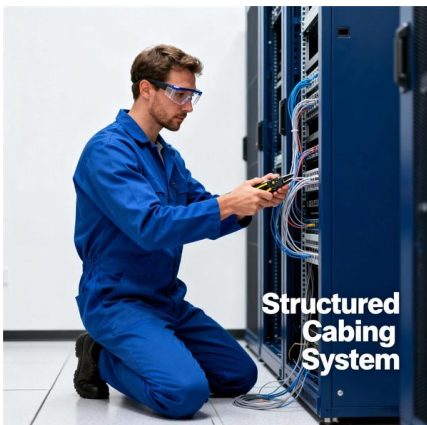
The Meaning and Function of Primary, Secondary, and Tertiary

Secondary Distribution Box: Supplies power to specific buildings or floors. Handles three-phase power and typically connects to secondary loads such as motors or machinery. Equipped with larger three



System Arrangements

Several commonly used system topologies are presented here, along with the pros and cons of each. The figures for each of these assume that the distribution and utilization voltage are the same, and



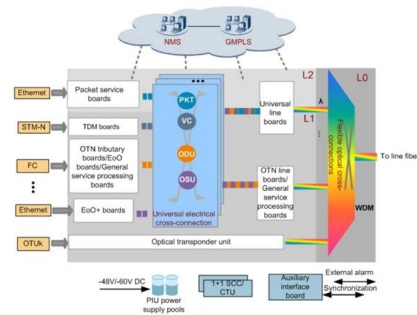
SECTION 9: ELECTRICAL POWER DISTRIBUTION

Utilities may have some control over and access to the energy stored in electric vehicles attached to the grid.



COMPONENTS OF DISTRIBUTION SYSTEM

In general, the distribution system is the electrical system between the sub-station fed by the transmission system and the consumers meters. It generally consists of feeders, distributors and the



Contact Us

For datasheets, pricing, or custom telecom energy solutions, please visit:
<https://www.koskolong.co.za>