



**Adam Tas Corridor Energy**

# **Long Island Long Span Bridge**





## Overview

---

Verrazzano-Narrows Bridge, long-span suspension bridge spanning New York Harbor from Brooklyn to Staten Island, built by Othmar H. An exceptionally expensive engineering project largely because of the problem of land acquisition, its total cost was \$325. The ends of the bridge are at historic Fort Hamilton in Brooklyn and Fort Wadsworth in Staten Island, both of which guarded New York Harbor at the Narrows for over a century. As long ago as 1910, when a steady parade of steamships bearing immigrants passed through the Narrows—the mile-wide channel at the entrance to New York Harbor—engineers envisioned a great bridge as a gateway to the New World.



## Long Island Long Span Bridge

---



### Long Island Sound link

Long Island Sound at night, with nearby settlements marked The Long Island Sound link is a proposed bridge or tunnel that would link Long Island, New York, to either

### Verrazzano-Narrows Bridge

The bridge was designed by famous engineer Othmar Ammann. Like the other suspension bridges he designed in the New York City area, this bridge



### Verrazzano-Narrows Bridge

Located at the mouth of upper New York Bay, the bridge not only connects Brooklyn with Staten Island but is also a major link in the interstate



## The Science Behind Long-Span Bridges and Their

Long-span bridges are engineering marvels that connect distant locations, reduce travel time,



and enhance economic activity. Their construction,



### Bridges & Tunnels

There are about nine entries and exit points how to get in and out on Long Island. Below are detailed information and reference that we've specially made on these



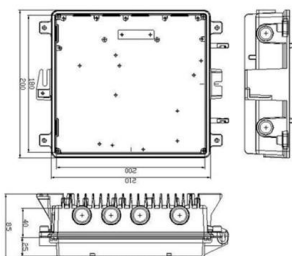
### Long-span bridges

Some design aspects common to long-span CSBs and suspension bridges, will be presented along with modern solutions, current research, and future development on the aerodynamic stability of decks



### Long Span Bridges

A long-span bridge is a structure that spans more than 120 meters. These bridges are used to cross a relatively large river, valley, or other such natural formations.





## San Francisco-Oakland Bay Bridge

The San Francisco-Oakland Bay Bridge is made up of two bridge segments: a skyway structure/single anchored suspension bridge between Oakland and Yerba



## Mackinac Bridge

The Mackinac Bridge (/ 'mæk?n?: / MAK-?-naw; also referred to as the Mighty Mac or Big Mac) is a suspension bridge that connects the Upper and Lower

## Top 10 Longest Bridges in the World 2025

The earliest bridges often mimicked natural formations, made from materials like logs, vines, and stone. The Romans pioneered bridge design and



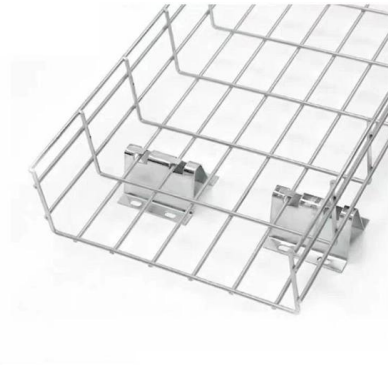
## The History of the Verrazano-Narrows Bridge, 50 Years

Connecting Brooklyn with Staten Island, it is still the longest suspension bridge in



### Brooklyn Bridge

The span was originally called the New York and Brooklyn Bridge or the East River Bridge but was officially renamed the Brooklyn Bridge in 1915. Proposals for a

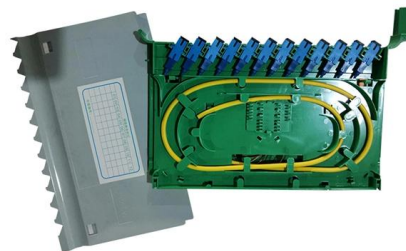


### List of longest bridges

This is a list of the world's longest bridges that are more than 3 kilometers (1.9 mi) in length sorted by their full length above land and water. The main span is the

### Verrazzano-Narrows Bridge , Description, Length,

Verrazzano-Narrows Bridge, suspension bridge spanning New York Harbor from





### Governor Hochul Provides Update to Several Long

Bridge Deck Renewals and Repairs A significant endeavor to replace concrete bridge decks began last spring, in an effort to renew the riding surfaces

### Bridges & Tunnels

There are about nine entries and exit points how to get in and out on Long Island. Below are detailed information and reference that we've specially



### CT developer pushing for \$50B Long Island Sound bridge prepares

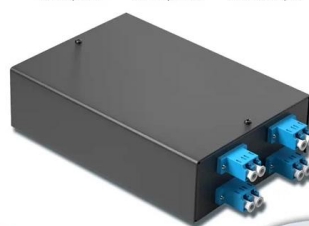
CT developer pushing for \$50B Long Island Sound bridge prepares pitch for President Trump For more than 70 years, Connecticut and New York leaders have debated the idea of building

### Verrazano Narrows Bridge

The Verrazano-Narrows Bridge is a double-decked suspension bridge that connects both Staten Island and Brooklyn to New York City at the Narrows, the reach

4-port 8-core LC wall-mounted fiber terminal box (empty frame)

Surface painted    Scientific plate fiber    Cold-rolled steel plate



Lifetime quality assurance

Free shipping

Customizable for telecommunications



## Fire Island Inlet Bridge hole repaired; DOT says span remains safe

Despite the public attention and political pressure, the DOT is not changing its planned timeline for the span. "The bridge remains safe for travel and NYSDOT, as always, will continue to

## Bridges & Tunnels

Welcome to our bridges and tunnels page. There are about nine entries and exit points how to get in and out on Long Island. Below are detailed information and



## Verrazano Narrows Bridge

The Verrazano Narrows Bridge has a center span of 4,260 feet (1,298 m) and is known as the largest suspension bridge in the world at the time of its completion.

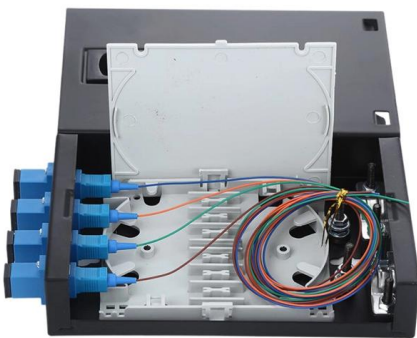
## Long Island Roads

View of Long Island Expressway looking East from Sagtikos Parkway Bridge. Interstate 495/Long Island Expressway I-495, commonly known as the Long



## The History of the Verrazano-Narrows Bridge, 50 Years

The Bridge: The Building of the Verrazano-Narrows Bridge Toward the end of 1964, the Verrazano Narrows Bridge-linking the New York City boroughs of Brooklyn



## Long Beach Bridge (Nassau CR 1)

THE ORIGINAL LONG BEACH BRIDGE: Opened to traffic on June 18, 1922, the original Long Beach Bridge provided access from the city of Long Beach, which is



## Michael Valente Memorial Bridge Map

The Michael Valente Memorial Bridge is a twin-span bascule bridge crossing Reynolds Channel, between the City of Long Beach and the Village of Island Park, in Nassau County, New York, United





## Contact Us

---

For datasheets, pricing, or custom telecom energy solutions, please visit:  
<https://www.koskolong.co.za>