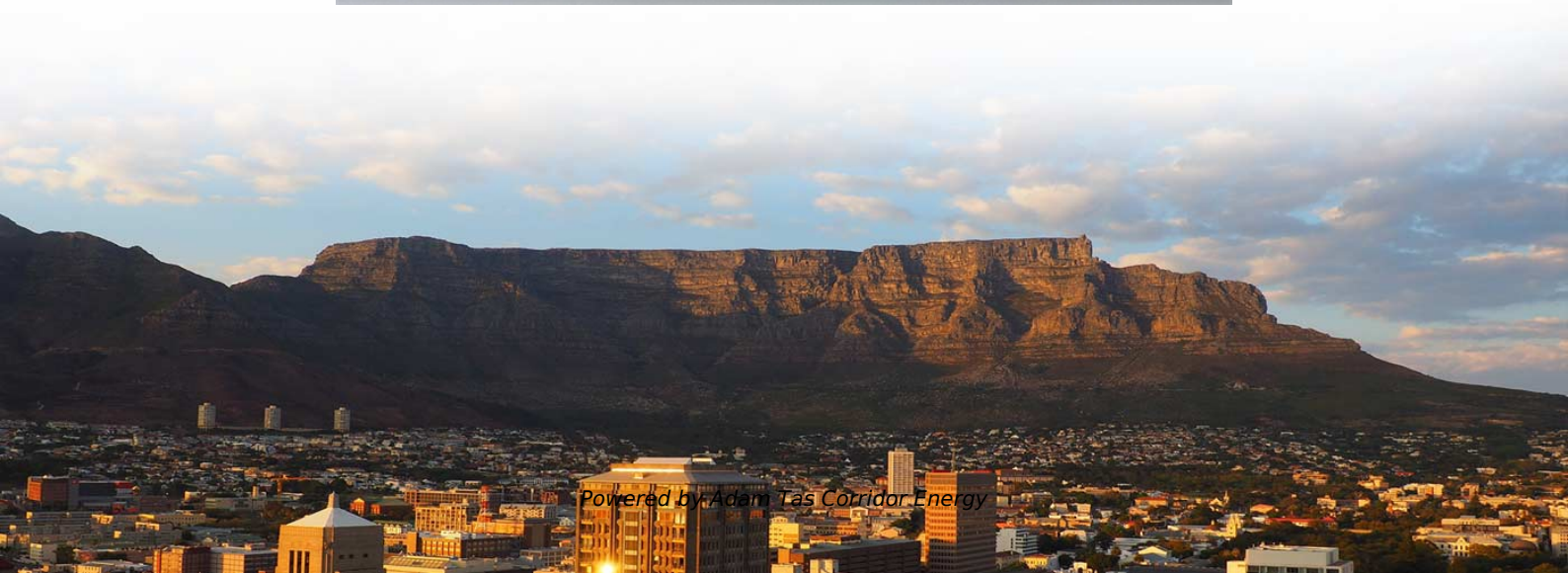
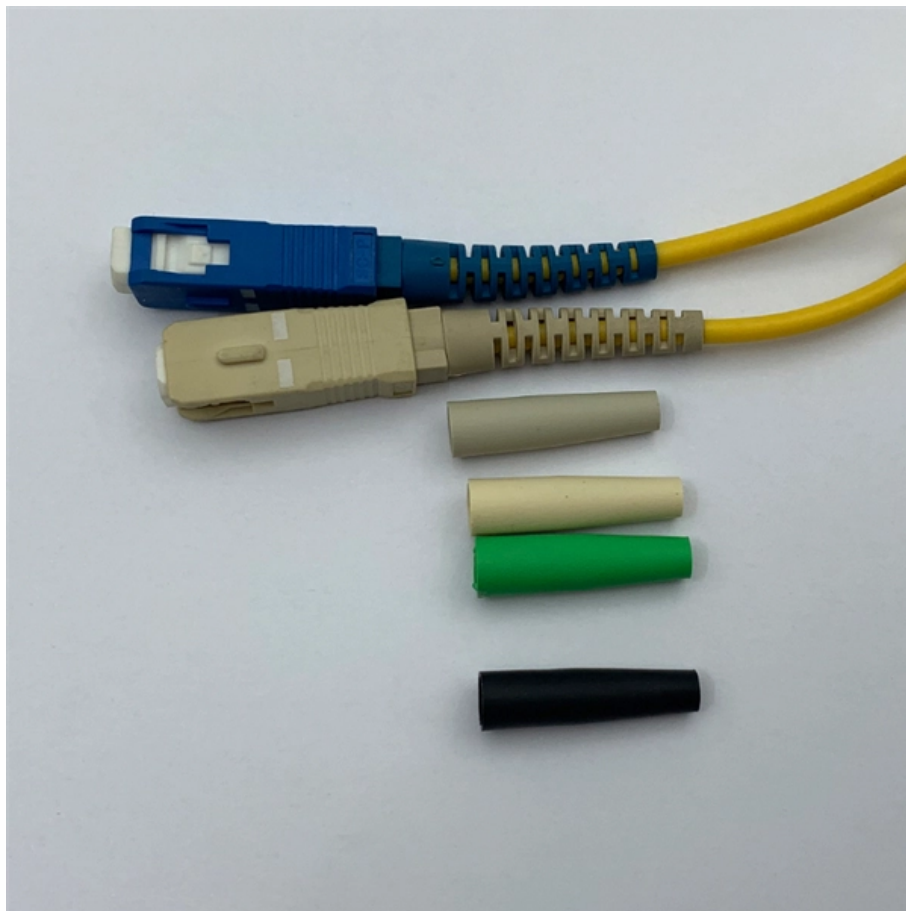




**Adam Tas Corridor Energy**

# **Low Loss of Carrier-Grade Routers**





## Low Loss of Carrier-Grade Routers

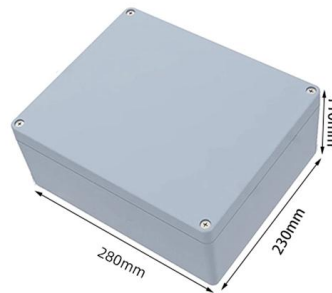


### Carrier Grade NAT Configuration Guide for Cisco CRS Routers, IOS

New and Changed Carrier Grade NAT Feature  
 This table summarizes the new and changed information for the Cisco IOS XR Carrier Grade NAT Configuration Guide for the Cisco CRS Router, and tells

### Can anyone recommend me a router with very low / zero packet loss?

I get high packet loss on my TP Link VR200 router (+ integrated modem), when connected via ethernet / cat5e network cable. People using just a modem say they have no packet loss at all on Geforce



Ordering information

NO.	1	2	3	4	5	6
Model	SP1201	SP1202	SP1203	SP1204	SP1205	SP1206
Product name	Patch Panel	Patch Panel	Patch Panel	Patch Panel	Patch Panel	Patch Panel
Illustration						
HD	1	2	4	1	2	4
Maximum number of cores	144	288	576	144	288	576
Product size (including packaging and shipping)	402.07*371*174 mm	402.07*371*181 mm	402.07*371*177 mm	402.07*371*174 mm	402.07*371*181 mm	402.07*371*177 mm
Standard color code	RA1005	RA1005	RA1005	RA1005	RA1005	RA1005

### What is Carrier Grade? Key Components & Advantages

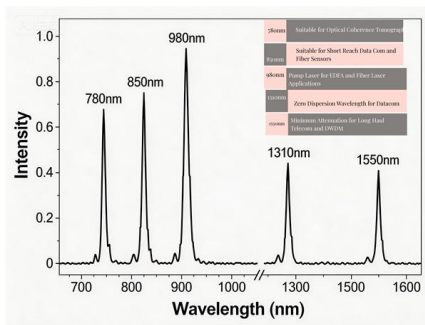
Here, we demonstrate a low-loss, noiseless, polarization-maintaining routing of single and entangled photons at the telecom L-band.

### Enterprise-Grade Cellular Routers: The 2026 Guide to Strategic

Ditch costly copper for 100% uptime. Our 2026 guide to enterprise-grade cellular routers shows



you how to build a resilient, high-performance 5G/LTE network.



### Carrier-grade Flag Products-H3C

This product series is renowned for its stability, reliability, and advanced technology, delivering outstanding network services for telecommunications carriers.

### The 5 Best Wi-Fi Routers of 2026

We recommend the TP-Link Archer BE900 as the best router. It's a Wi-Fi 7 router with truly top-of-the-line specs, including four bands, eight



### How to Choose a 5G/4G LTE CPE Router for Carrier

Discover how to choose a carrier-grade 5G or 4G LTE CPE router for FWA deployments. Learn key features like TR-069, dual SIM, antenna design,



## Carrier Routing System

Carrier Routing System (CRS) is a modular and distributed core router developed by Cisco Systems Inc that enables service providers to deliver data, voice, and video services over a scalable IP Next

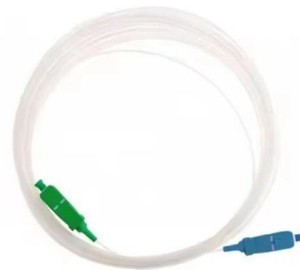


## What Is CGNAT (Carrier-Grade NAT)? Definition

Carrier-Grade NAT (CGNAT) allows ISPs to provide internet access to a large number of their customers using a limited number of public IP addresses.

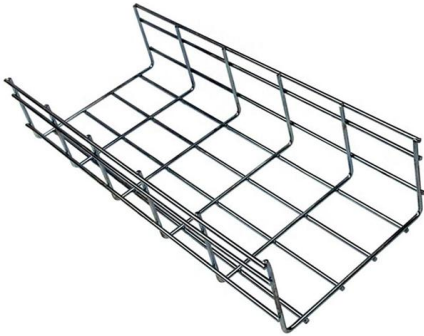
## Carrier Ethernet

Carrier Ethernet provides end-to-end quality of service guarantees with precise Service Level Agreements (SLAs) for critical parameters like latency, jitter, and



## Carrier Grade Service

Carrier Grade Service refers to a high-quality service designed to support critical network functions, such as those required by telecommunication carriers. It involves the use of technologies like PBB-TE to



### **Cisco Carrier Grade Services Engine Module Data Sheet**

The Cisco ® Carrier-Grade Services Engine (CGSE) for the Cisco Carrier Routing System (CRS) is an ideal platform for these services. The Cisco



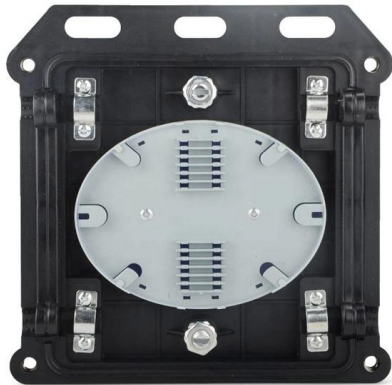
### **Carrier-Grade Wi-Fi / Licensed Assisted Access**

Kappa 438 Laminates have low loss, excellent dielectric constant (Dk) tolerance, tight thickness control and are engineered for outstanding, repeatable wireless performance.

### **TJ1400 Aggregation & Edge Router , Carrier-Grade IP-MPLS**

Designed to support high availability in aggregation and edge network deployments, the TJ1400 series leverages a modular architecture with hot swappable modules and built in redundancy, making it well



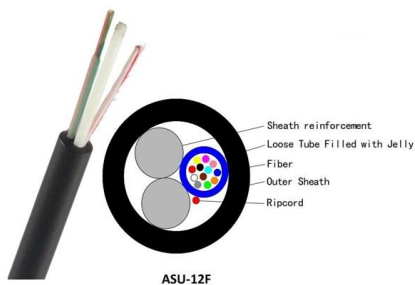


## Wireless and Ethernet Backhaul Solutions featuring LOS & MIMO

From service provider and enterprise networks to government, public safety, and military communications, our PTP portfolio delivers high-capacity, low-latency performance with carrier-grade

## In-Depth Analysis of High Packet Loss Issues in Industrial Routers

In industrial IoT scenarios, industrial routers serve as the core hub for data transmission, with their stability directly impacting production efficiency. However, issues such as instruction delays and



## Carrier Grade Router: High-Reliability Networking Solution

Discover carrier grade routers with dual redundant power, 100GE ports, and SDN compatibility. Find top-rated suppliers offering enterprise-grade reliability. Click to explore verified options for ISPs and

## Introduction to Carrier Grade Cisco ASR routers: Cisco

Today I am going to talk about the carrier grade Metro ethernet routers of Cisco. These routers are very much favorites in many of the service





## Reduce Insertion Loss and Boost Antenna Performance with Next

By using high-frequency PCB materials engineered for ultra-low insertion loss and consistent RF propagation velocity, 5G router PCB platforms maintain low return loss and provide

## CGv6 Configuration Guide for Cisco ASR 9000 Series Routers, IOS

Understand how to configure MAP-E and MAP-T without service modules or cards, and an overview of MAP-T logging.



## The Best Wi-Fi Routers We've Tested for 2026 , PCMag

These days, your wireless router is not just your lifeline to the internet, but also to your job. We've hand-tested the top routers so you can find the right fit

## What is carrier-grade?

Learn what carrier-grade means, why network providers care about carrier-grade experiences, and how to create the best experiences.



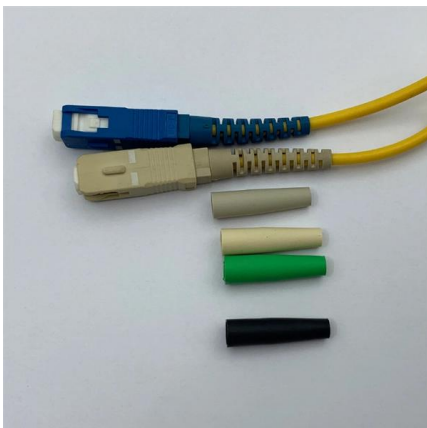
### **Best Wi-Fi Routers for 2026: We Rank the Fastest 5th,**

CNET's recent lab testing measured throughput, jitter, latency and signal strength on more than 30 top routers to find the ones that deliver a fast, consistent internet



### **The 10 best enterprise routers in 2025**

Find the best enterprise router for 2025. This guide covers top enterprise routers, enterprise Wi-Fi, and wireless options to meet your business



### **The intricacies of signal integrity in high-speed communications**

To solve the insertion-loss issue, designers have several choices. The first and most straight forward is to select a low-loss, high-performance dielectric material for their PCB. Examples of high



## Packet Loss Causes and Solutions for Better Network

Learn about packet loss, its main triggers such as network congestion and faulty hardware, and how to minimize disruptions with proven methods for

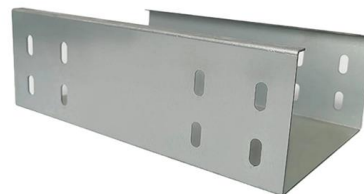


## Decoding Carrier Grade: Key Parameters Explained

Learn the importance of Carrier Grade in telecoms & explore key parameters for networks. Discover Ringflow's carrier-grade solutions in this

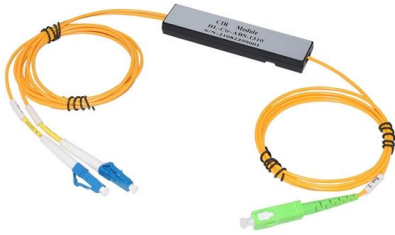
## Router

Router & Carrier Ethernet product line covers the backbone, metro, and mobile backhaul networks. Large-capacity backbone networks that are highly scalable



## Carrier Grade

Carrier-grade equipment must incorporate robust security measures to protect sensitive data and network infrastructure. Performance: Carrier networks must deliver consistent and predictable



## Contact Us

---

For datasheets, pricing, or custom telecom energy solutions, please visit:  
<https://www.koskolong.co.za>