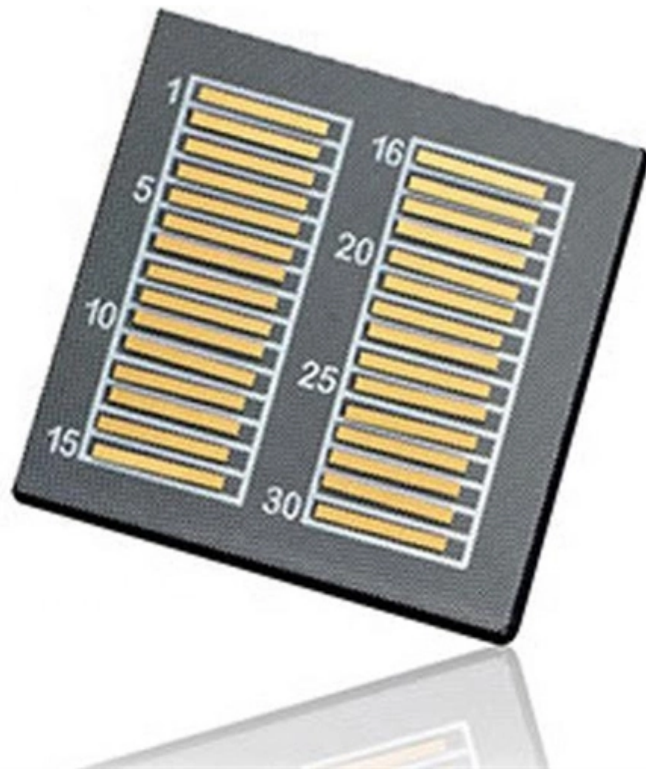




Adam Tas Corridor Energy

Maintenance and Operation of Optical Core Router SFP





Maintenance and Operation of Optical Core Router SFP



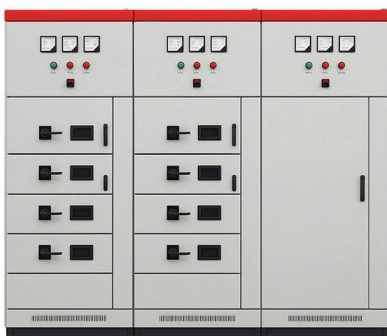
89P 36P 16P

Essential Tips for SFP Modules Maintenance

Maintaining your SFP optical transceivers properly is essential for achieving long-term network reliability and minimizing unplanned outages. By

Cisco Small Form-Factor Pluggable (SFP) Transceiver Modules

The SFP Transceiver Modules are hot-swappable input/output (I/O) devices that plug into 100BASE and 1000BASE ports, which connects the module port with the fiber-optic or copper



10GE SFP+ Optical Modules

Single-fiber bidirectional (BIDI) optical modules must be used in pairs. For example, SFP-10G-BXU1 must be used with SFP-10G-BXD1.

Maintaining SFP Transceivers and Fiber-Optic Cables

Follow these maintenance guidelines: SFP transceivers are static-sensitive. To prevent ESD



damage, wear an ESD-preventive wrist strap that is connected to the chassis. Do not remove and reinsert a



Optical Module Maintenance and Cleaning: Tips for

Keep your SFP optical modules clean and maintained to prevent network failures. Simple, regular cleaning boosts performance, extends module

Maintenance and monitoring: extend your module's lifespan

Learn how to extend fiber module lifespan with smart maintenance, monitoring, and best practices for AV-over-IP networks.



Installation and Maintenance Guide for Gigabit Optical Modules and 10

Maintenance and upkeep of optical modules are essential for the normal operation and troubleshooting of network devices. Here are some common maintenance tips: Regular Cleaning:





Operation, Maintenance & Calibration of SFP Transceivers

Learn how to operate, maintain, and calibrate GAO Tek's SFP Transceivers with detailed instructions for optimal performance and reliability.



Operation, Maintenance & Calibration of SFP Transceivers

Below are general answers on how to operate, maintain, and calibrate an optical fiber ranager from the list of GAO Tek's SFP Transceivers. Operating SFP Transceivers Power Off the Device: Before

What are the Best Practices for SFP Module Maintenance?

Ensuring the normal operation of SFP modules is an important part of maintaining network stability. How to maintain the normal operation of optical modules, today's article will talk to you in



SFP Maintenance Tips

In order to ensure that SFP modules (and all optical transceivers for that matter) continue to perform at their optimal level, it is important to follow



Troubleshooting and Repairing Optical Transceiver Failures in

In summary, the best practices for SFP-related maintenance to help your SFP modules last longer are to clean the optical fibers regularly, control the environment, and manage firmware.



TR-3552: Optical network installation guide

Optical transceivers interface a network device motherboard (for a switch, router or similar device) to a fiber optic or unshielded twisted pair networking cable.

SFP-1G-SX Explained: The Essential Guide to 1G

Discover how this module powers core enterprise networking. The relentless demand for faster, more reliable network infrastructure makes fiber





How to Safely Install and Maintain 10G SFP+ Optical

A complete professional guide covering all key installation, cleaning, ESD, compatibility, environmental, and safety precautions for 10G SFP+ optical

COM_WP_Fiber Optic Infrastructure_US dd

Maintenance Supplies To properly install and/or maintain a fiber optic infrastructure the following items should be purchased and kept on hand.



How to Clean SFP Transceiver Safely and Effectively

Learn how to clean an SFP transceiver properly to prevent signal loss, reduce errors, and extend module lifespan using industry-approved tools and methods.

What are the Best Practices for SFP Module Maintenance?

As the basis of modern network communication, SFP (Small Form-Factor Pluggable) modules are indispensable in network communication. Ensuring the normal operation of SFP



What Is an SFP Module? Complete Guide

SFP modules, or Small Form-factor Pluggable modules, are essentially the workhorses of modern networking. They facilitate data

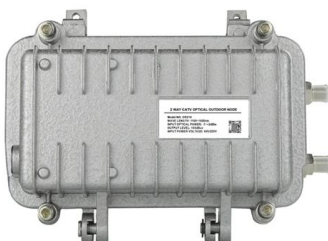
Smart SFP(TM) simplifies operations and maintenance for network operators

Integrates intelligent and innovative system functions into an SFP module. Operations, Administration and Maintenance (OAM) tools are essential for service turn-up and Service Level Assurance in Carrier



Cisco Provider Connectivity Assurance Sensor SFP 10G Hardware

Installation, Maintenance, and Upgrade The documentation set for this product strives to use bias-free language. For the purposes of this documentation set, bias-free is defined as language





Unveil the Secrets of SFP Module Installation and Removal

Master the art of effortless SFP installation and removal with our comprehensive guide. Explore the general rules, essential preparation, and step



SFP Optical Transceivers Operation High-Speed

In the realm of high-speed networking, SFP optical transceivers are indispensable for their ability to ensure swift and secure data transmission. This



Ultimate Guide to 1G SFP Module Selection

A mismatched or poorly selected SFP module can lead to link instability, excessive optical power loss, interoperability failures, or unnecessary budget overruns--issues that can significantly impact

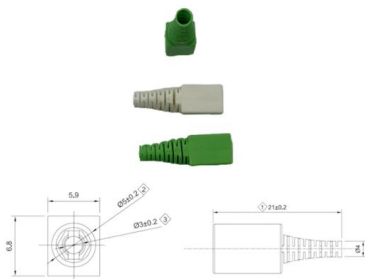
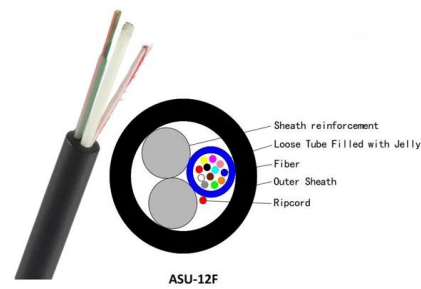
How to Maintain SFP Optical Transceiver

The SFP optical transceiver integrates high-precision optical components and circuit components, and requires great attention to its working. For the optical



ITU-T Rec. L.25 (01/2015) Optical fibre cable network maintenance

Summary Recommendation ITU-T L.25 deals with general features in relation to the maintenance and operation of optical fibre cable networks. This is the latest revision of a Recommendation that was



How to Install and Remove Optical Modules Safely

Small Form-factor Pluggable modules (SFP module) are the workhorses of modern network connectivity, enabling flexible fiber optic or copper

RUGGEDCOM SFP transceivers

It is intended for use by network technical support personnel responsible for the installation, commissioning and maintenance of routers and switches. It is also recommended for use by network





Contact Us

For datasheets, pricing, or custom telecom energy solutions, please visit:
<https://www.koskolong.co.za>