



Adam Tas Corridor Energy

Malaysia Cable Tray Seismic Bracing Shape





Overview

This study aims to develop a simple yet efficient performance-based design optimization methodology for cable tray systems in building structures.



Malaysia Cable Tray Seismic Bracing Shape

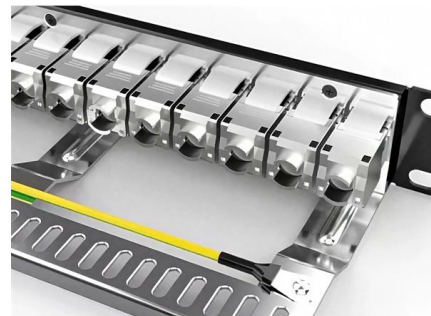
Cable & Pipe Supports

In Australia, seismic compliance is mandated by Section 8 of AS1170.4 (2007). EzyStrut offers a range of seismic solutions that comply with AS1170, and our one-stop range of seismic bracing, cable tray



Performance-based optimum seismic design of cable tray system

The seismic performance levels of cable tray systems are presented according to current seismic design codes. A performance-based optimum seismic design procedure for cable tray



Lightweight Cable Tray System, Strong, Fast

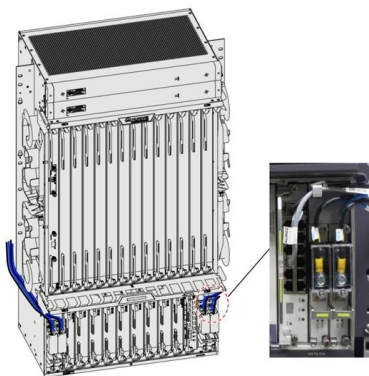
The generally accepted spacing for seismic bracing (depending on local building codes) is: - Transverse bracing shall not exceed 40'-0" (12.2M). - Longitudinal

Seismic cable bracing solution brochure

Tested by an independent lab and stamped by a Professional Engineer, the seismic cable kits are



designed to brace non-structural equipment and distribution systems to help minimize damage from



Understanding the Seismic Resistance of Cable Trays

This article will explore the importance of seismic resistance in cable trays, discuss when seismic braces are necessary, and help you understand how

Cable bracing , Sway bracing , Tolco , Eaton

Utilize our pre-approved seismic engineering guidelines to assist with your next project design, bracing layout, and submittal package for piping, ducts, conduits, cable trays and other systems.



Seismic Supports

Seismic Supports Cable trays are systems used for the safe transportation and protection of electrical cables, designed to fit the pathways within buildings and



The shake on seismic bracing

Seismic bracing against the wrath of earthquakes is an increasing concern for today's data-communications and telecommunications cable installer, and efforts



SEISMIC BRACING OF A DISTRIBUTED CABLE TRAY SYSTEM

The cable trays have diagonal bracing between layers of cable trays in the longitudinal direction using proprietary steel members and connected using bolts and clamps.



Seismic MEP Solutions , Eaton

The assembly connects the structure such as a beam or ceiling, to a brace member which could be cable, channel, or pipe to a non-structural support, such as pipe, trapeze, cable tray, duct, and more.



Seismic and cable tray solution flyer

Eaton's B-Line series cable tray with TOLCO seismic bracing is the recommended total solution for your project. Our cable tray, bolted framing, and seismic bracing are approved as one system through



Seismic Bracing Systems

Seismic bracing systems, are developed to prevent possible damages in the building installation, especially during natural disasters

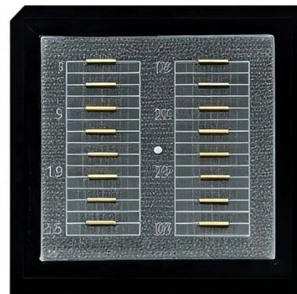


Cable Trays Seismic Design: Protecting Power in Quake

Learn how I approach Cable Trays Seismic Design to protect power and data in earthquake-prone areas. Understand key principles, methods, and

Lightweight Cable Tray System, Strong, Fast

No need for any drilling which makes for an extremely fast and simple installation. Compare B-Line or Thomas & Betts cable trays to ZipTray for an informed decision.



Vogtle Electric Generating Plant (VEGP) Units 3 and 4 Updated

Cable Trays and Cable Tray Supports This appendix provides the design criteria for seismic Category I cable trays and their supports. Seismic Category II cable trays and their supports are also designed



SECTION 7 DETAILS OF BRACED COMPONENTS

4-WAY SWAY BRACE DETAIL FOR CABLE TRAY
(for locations where Transverse & Longitudinal
bracing coincide)



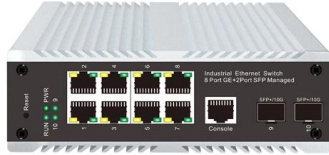
UNISTRUT Seismic Bracing Solutions

UNISTRUT Seismic Bracing Solutions Unistrut is a global leader in seismic bracing solutions and is a go-to resource for Engineers, Contractors, Specifiers, and others. We have decades of experience

Cable Tray and Conduit System Seismic Evaluation Guidelines

Rigid-mounted conduit and cable trays are inherently very stable and subject to minimal seismic amplification. A detailed dead load design review of these systems provides ample margin for





Seismic Bracing Kit , Seismic Bracing , Wire and Cable Hangers , Wire

Kit contains items needed for seismic bracing long cable tray runs. Each kit contains: (4) 11' cables with mounting eyelets (2) Metal brackets for attachment to support members (4) Cable clamp collars (4)

Appendix 3F Cable Trays and Cable Tray Supports

This appendix provides the design criteria for seismic Category I cable trays and their supports. Seismic Category II cable trays and their supports are also designed utilizing the design criteria of this appendix.

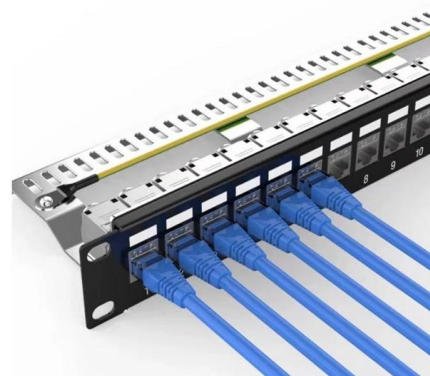


Installing Seismic Restraints for Electrical Equipment

Seismic restraint devices include vibration isolation systems, cable or strut suspension systems, roof attachment systems, and steel shapes. An electrical danger instruction chart is provided (page 160)

Seismic Bracing Products and Solutions , nVent CADDY

nVent CADDY cable bracing is for all MEP components including fire sprinkler. Our cable bracing has no brace length limitation and is ideal when confined or crowded spaces make rigid bracing systems





Reduction of seismic loads in cable tray hangers

Nuclear Engineering and Design 81 (1984)
403-410 403 North-Holland, Amsterdam
REDUCTION OF SEISMIC LOADS IN CABLE TRAY
HANGERS Britt K. PEARCE *, John E.

Seismic Bracing Systems for Cable Trays Catalog

Explore seismic bracing solutions for cable trays. Catalog details wire rope/cable systems, specs, design for earthquake protection.

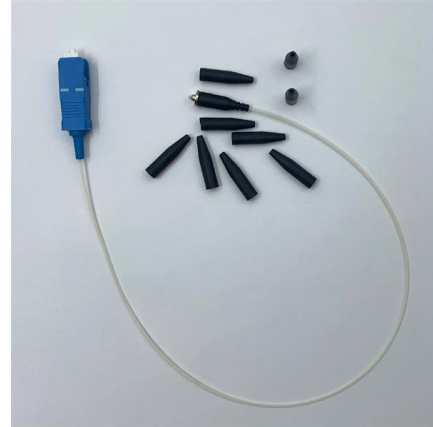


SOLUTIONS

Engineer certified designs and site inspections
Ezystrut offers a range of seismic solutions that
comply with Australian Standard AS1170.4. Our
one-stop solution for seismic bracing, cable tray,
pipe

Cable Tray Checklist for High-Seismicity Projects

When those elements are coordinated early,
cable tray systems can perform far more reliably
under earthquake demands. Planning a project in
a high-seismicity region? Contact our team



Contact Us

For datasheets, pricing, or custom telecom energy solutions, please visit:
<https://www.koskolong.co.za>