



Adam Tas Corridor Energy

Maldives ONT Optical Network Terminal NRZ





Maldives ONT Optical Network Terminal NRZ

FS Community

Hier sollte eine Beschreibung angezeigt werden, diese Seite lässt dies jedoch nicht zu.



Optical Network Terminals Selection Guide: Types,

Optical network terminals (ONTs) are essential endpoint devices in fiber-optic communication systems, responsible for converting optical signals from fiber



PON Network Components Overview: OLT, ONU, ONT,

This article will introduce passive optical networks (PON), in which we will introduce everything about OLTs, ONTs, ONUs, and ODNs, including their

Exploring the Essential Functions of an Optical Network

Discover the crucial role of an ONT in fiber optic networks, its functions, evolution, and diverse types. Learn about ONT integration with smart



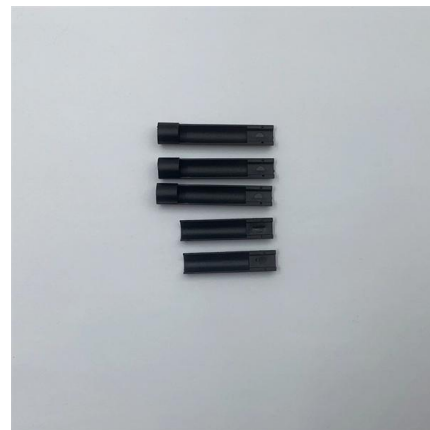
What is Optical Network Terminals (ONT)?

Explore Optical Network Terminals (ONT), their functions, and how they support efficient, high-speed connectivity in modern fiber networks.



What Is ONT? Understand Optical Network Terminal in

An Optical Network Terminal (ONT) is a critical device in fiber-optic networks, enabling high-speed, stable connectivity for homes, businesses, hotels,



What is an Optical Network Terminal (ONT)?

Discover how an Optical Network Terminal (ONT) enables fiber-optic broadband, gigabit internet, and VoIP services by converting optical signals into Ethernet



What is the Difference Between OLT and ONT?

Optical Network Terminal (ONT) is an acronym for Optical Network Terminal. On your end, an ONT is a device that acts as the telecommunication



What is an ONT and where should I install it?

An ONT is an Optical Network Terminal. It is typically a small white plastic box (around 180mm by 50mm by 120mm in size) that is mounted on your internal



ONT What is it and how is it used in a fiber network?

What Is an ONT? ONT stands for Optical Network Terminal. It's the device that: Connects directly to a fiber optic line run by your Internet provider Converts that





What is an Optical Terminal Network and Why Do I

Learn how an Optical Network Terminal -- also known as an ONT -- plays a vital role in providing fiber optic service to your home.

The Comprehensive Guide to PON Architecture: Mastering OLT, ONU, ONT

Comprehensive guide to Passive Optical Networks (PON), covering OLT, ODN, ONU/ONT, GPON/XGS-PON/NG-PON2 standards, deployment strategies, and FTTH network

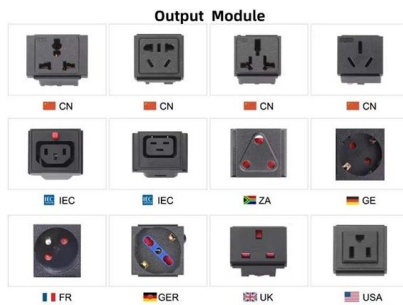


Optical Network Terminal explained , Prysmian

How does ONT work? The optical signal from the service provider's fibre optic network is received by the ONT and it translates the optical signals into data that

#gpon #ftth #olt #ont #onu #fiber #networking #maldives #

Pleased to share a successful real environment validation of the Huawei Optical Line Terminal (OLT) EA5801E, integrated with the Huawei Optical Network Terminal (ONT) EG8145X6 and Huawei



Why Choose Us

- 28 Years of OEM/ODM**
28 years factory manufacturing experience.
- Professional R & D team**
10+years experience/renowned electronic engineer.
- Fully Certified**
Our are certified CE,UL,FULV,ISO9001,ISO14000 etc.
- Timely Delivery**
23 production lines, 1000+ employees, Timely delivery guaranteed.
- Quality Assurance**
Professional QC team with full process inspection.
- After-sales service**
After Sales Service for Customer Satisfaction.

ONT/ONU Devices , Optical Network Terminals and

Discover our selection of GPON, EPON, and XG (S)PON ONT/ONU devices. Choose from reliable Optical Network Terminals for seamless connectivity and

What is an ONT (Optical Network Terminal)?

An Optical Network Terminal (ONT) is a device that converts fiber-optic signals to Ethernet signals that your Wi-Fi router or modem can handle. It is an



ONR VS ONT: What's the Difference, and Which do I

An ONT (Optical Network Terminal) converts fibre-optic signals into usable internet data. An ONR (Optical Network Router) does the same, but also





What Is an ONT & How Is It Used in Fiber Networks?

The optical network terminal might not be the most glamorous part of your home network, but it's undoubtedly one of the most important. For homeowners,



Fiber Optic Terminal Box ODF 24Port

Fiber Optic Terminal Box ODF 24Port Brand: Suntelecom In Stock Model: SUN-ODB-RM2C-24SC, SKU: 01266 MVR 1450



(a) Optical Line Terminal (OLT); (b) Optical Splitter; (c)

Download scientific diagram , (a) Optical Line Terminal (OLT); (b) Optical Splitter; (c) Optical Network Terminal (ONT). from publication: Optical Code Division Multiple



What Is an Optical Network Terminal?

Understanding the Role of the Optical Network Terminal The modern digital landscape relies on fast, reliable internet. Fiber optic technology is at the forefront of delivering this speed and



ONT vs ONR: What's the Difference?

When you sign up for fibre broadband in Singapore, the equipment your ISP installs at home falls into one of two categories: an ONT (Optical

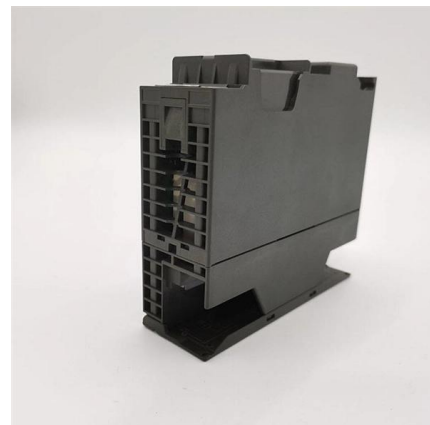


Optical network terminals (ONTs)

An optical network terminal (ONT) is a device used to "convert" the signals from the fiber network into a technology that end-users can use to connect their devices, like laptops, tablets, smartphones,

Connecting to your Fibre Box/Optical Network Terminal (ONT)

Connecting to your Fibre Box/Optical Network Terminal (ONT) This article is a quick guide on what a Fibre Box/Optical Network Terminal (ONT) is at your home.





What is OLT, ODN, ONU, and ONT in an FTTH Network?

The ONU (Optical Network Unit) and ONT (Optical Network Terminal) are located at the user's end of the network. They convert optical signals from the fiber line into electrical signals that

ONR VS ONT: What's the Difference, and Which do I

In simple terms: An ONT (Optical Network Terminal) converts fibre-optic signals into usable internet data. An ONR (Optical Network Router) does the



What is an optical network terminal (ONT)?

An optical network terminal is a device that connects a customer's premises to an optical network. Learn all about ONTs, how they work, and why

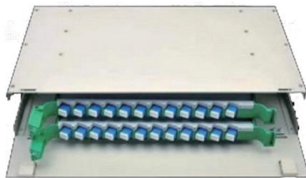
ONT (Optical Network Terminal): A Detailed Guide

It is a device that serves as the endpoint of an optical network and connects users to the network. It provides individual networks and businesses with super-fast



Understanding Optical Network Terminal (ONT)

1. Optical Interface Type The primary function of an ONT is to convert optical signals from the fiber optic network into electrical signals that can be used



Contact Us

For datasheets, pricing, or custom telecom energy solutions, please visit:
<https://www.koskolong.co.za>